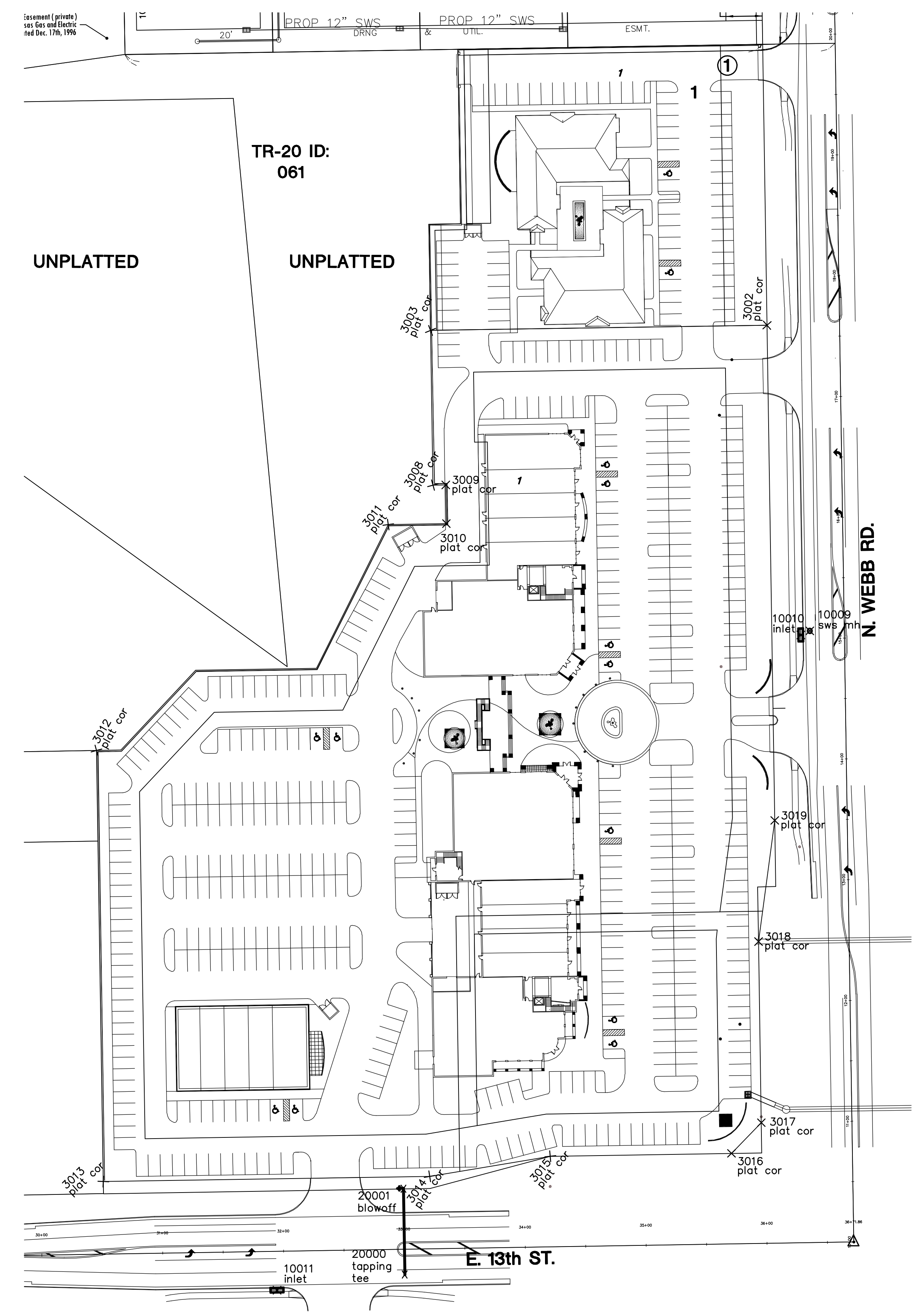


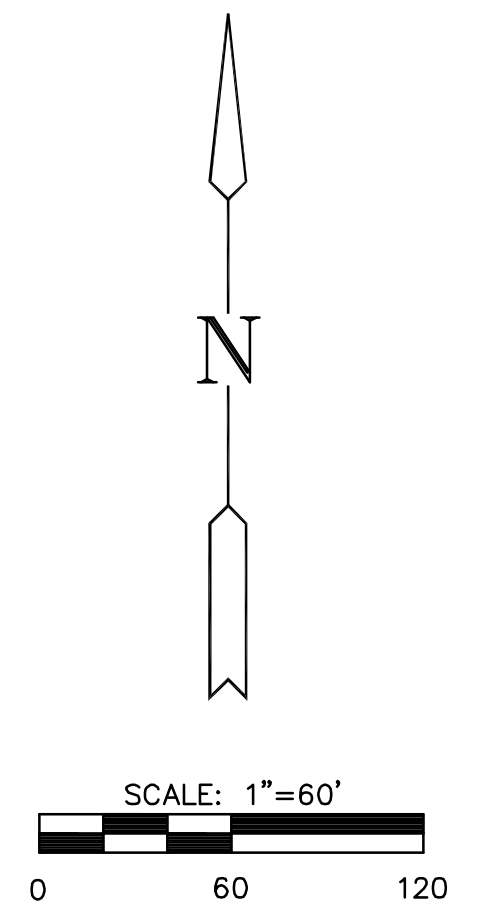
**PAVING AND INCIDENTAL DRAINAGE PLANS FOR
FOLIAGE CENTER ADDITION
13th STREET LEFT TURN LANES**



PROPOSED PL POINTS			
Point #	Northing	Easting	Desc.
3002	1695142.18	1680636.13	plat cor
3003	1695137.85	1680657.74	plat cor
3008	1695009.82	1680659.74	plat cor
3009	1695009.99	1680670.38	plat cor
3010	1694977.90	1680670.88	plat cor
3011	1694977.12	1680622.75	plat cor
3012	1694790.11	1680381.37	plat cor
3013	1694433.28	1680387.10	plat cor
3014	1694437.61	1680657.08	plat cor
3015	1694454.22	1680756.83	plat cor
3016	1694456.63	1680906.81	plat cor
3017	1694482.03	1680931.41	plat cor
3018	1694632.01	1680929.08	plat cor
3019	1694732.23	1680942.52	plat cor

PROPOSED SWS POINTS			
Point #	Northing	Easting	Desc.
10011	1694343.41	1680530.75	inlet

PROPOSED WATER POINTS			
Point #	Northing	Easting	Desc.
20000	1694356.21	1680636.48	Tapping Tee
20001	1694427.69	1680635.34	Blowoff



BUBBLE MAP
SHEET TITLE
04274
PROJECT NUMBER

SRS
DESIGN BY
JWC
DRAWN BY
DFL
CHECKED BY

ISSUED
May 2008
REVISED

SHEET NO.
14 of 23

PLOTTED: Monday, June 02, 2008 @ 04:05PM

J:\CIVIL\04274\DWG\PAV\RESIDENTIAL\TURN LANES\13TH STREET\04274_BM.DWG