

N 22623.85 E 20025.20
STA. 0+00.00 WATER MAIN 1
BL STA. 0+23.80, 26.36' LT
CONNECT TO EXISTING 12"x16" CROSS
1 - 12"x16" REDUCER
1 - 16" BUTTERFLY VALVE ASSEMBLY
VALVE BOX ELEV. 1321.95

CAUTION! EXISTING
UNDERGROUND TELEPHONE

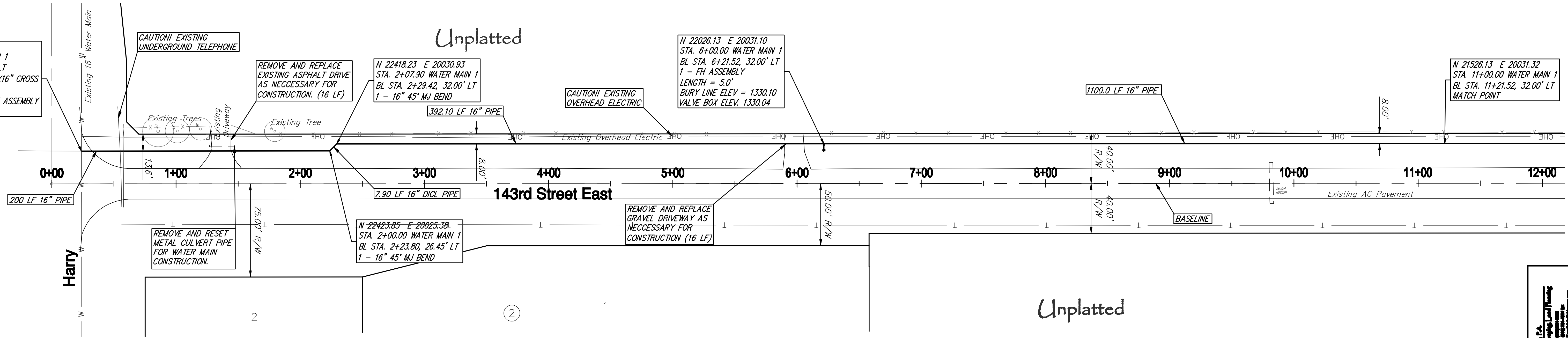
REMOVE AND REPLACE
EXISTING ASPHALT DRIVE
AS NECESSARY FOR
CONSTRUCTION. (16 LF)

N 22418.23 E 20030.93
STA. 2+07.90 WATER MAIN 1
BL STA. 2+29.42, 32.00' LT
1 - 16" 45° MJ BEND

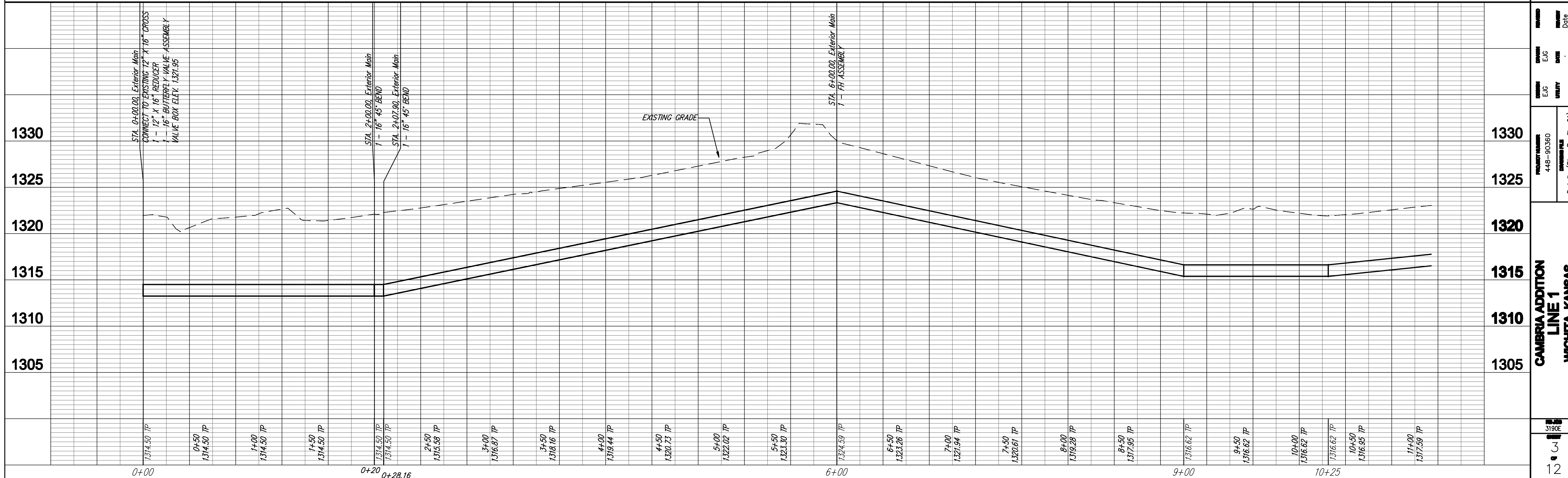
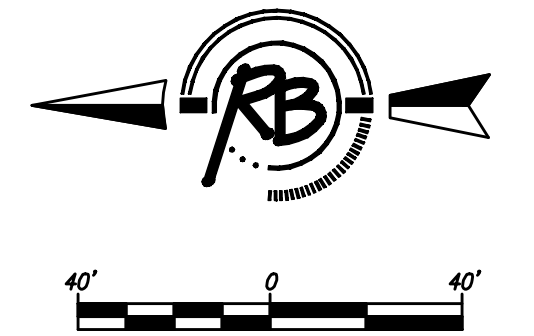
CAUTION! EXISTING
OVERHEAD ELECTRIC

N 22026.13 E 20031.10
STA. 6+00.00 WATER MAIN 1
BL STA. 6+21.52, 32.00' LT
1 - FH ASSEMBLY
LENGTH = 5.0'
BURY LINE ELEV. = 1330.10
VALVE BOX ELEV. 1330.04

N 21526.13 E 20031.32
STA. 11+00.00 WATER MAIN 1
BL STA. 11+21.52, 32.00' LT
MATCH POINT



Timber Valley Estates 2ne Addition



Ruediger & Potholm, P.A.
 Engineering & Surveying
 1100 S. W. 10th St., Suite 100
 Wichita, KS 67202
 Phone: 316.261.1111
 Fax: 316.261.1112
 Email: info@rpa.com

PROJECT NUMBER
 448-90360
 DRAWING TITLE
 Details (Plan Profile 01)

**CAMBRIA ADDITION
 LINE 1
 WICHITA, KANSAS**

3190E
 3
 12