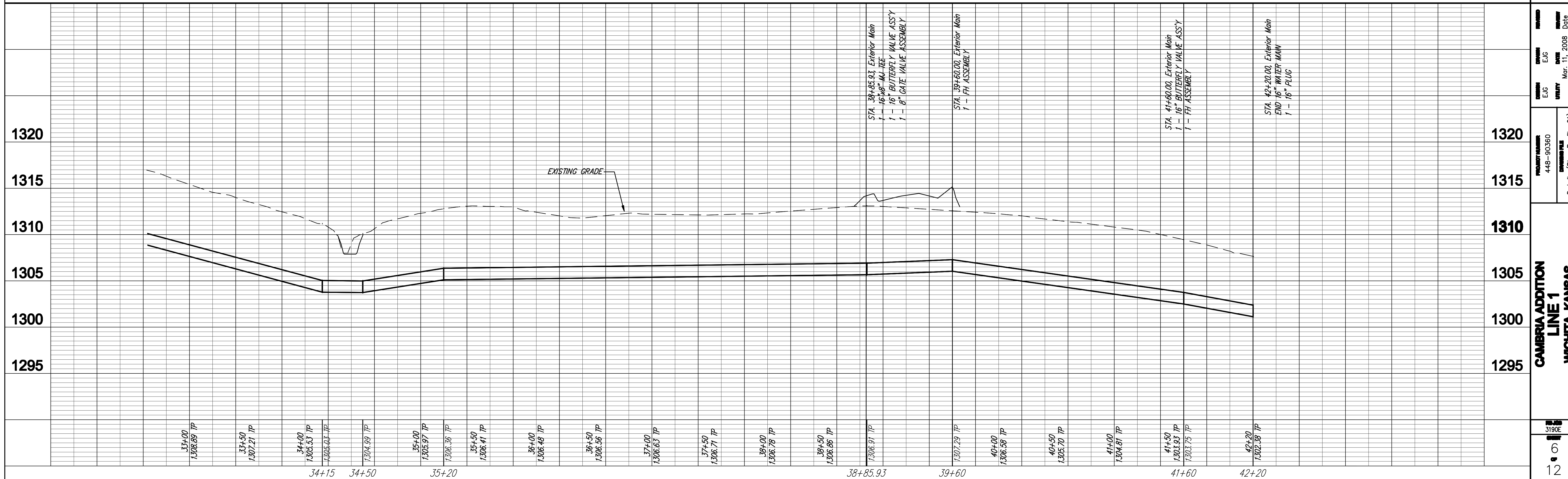
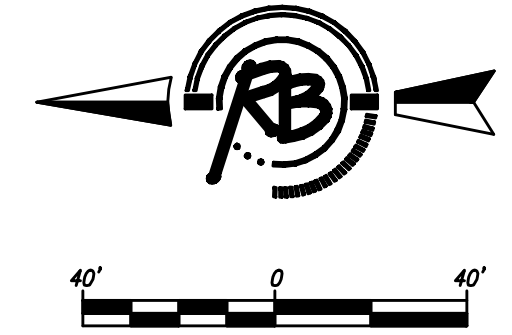
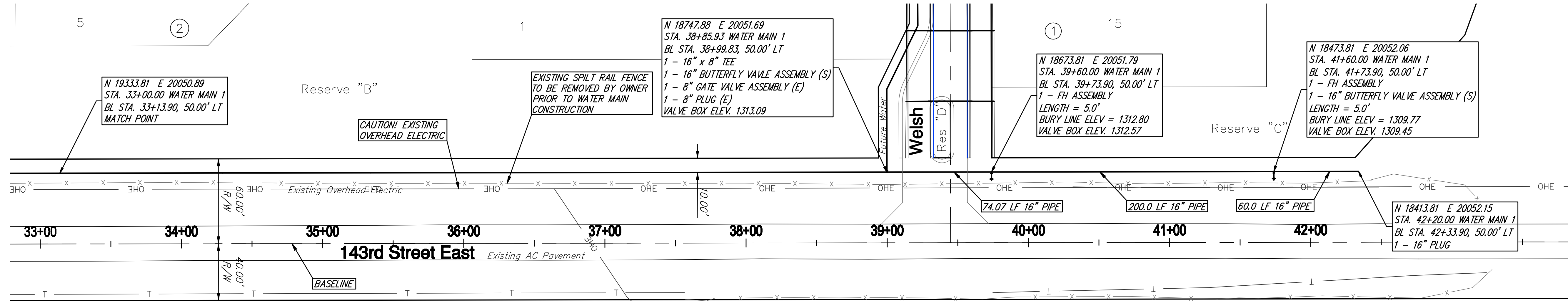


Cambria Addition



Reynolds & Poole, P.A.
 Engineering & Construction
 1000 W. 17th St., Suite 100
 Wichita, Kansas 67202
 Phone: 316.262.1234
 Fax: 316.262.1235
 Email: info@reynoldsandpoole.com

PROJECT NUMBER: 448-90360
DATE: Mar. 11, 2008
DATE:
DATE:
DATE:

PROJECT NAME: CAMBRIA ADDITION
LINE 1
WICHITA, KANSAS

3190E
6
12

Details (Plan Profile 01)