

△ = 42°59'03" R = 526.00' T = 207.11' L = 394.61' LC = 385.42'
CURVE DATA BASED ON WATERLINE Δ/2 = 21°29'32"

STATION	ARC	CHORD LENGTH		DEFLECTION	TOTAL DEFLECTION
		6'LT Offset	6'RT Offset		
19+28.16	-	-	-	00°00'00"	00°00'00"
19+50.00	21.84'	-	22.09'	01°11'22"	01°11'22"
19+75.00	25.00'	-	25.28'	01°21'42"	02°33'04"
20+00.00	25.00'	-	25.28'	01°21'42"	03°54'46"
20+25.00	25.00'	-	25.28'	01°21'42"	05°16'27"
20+50.00	25.00'	-	25.28'	01°21'42"	06°38'09"
20+75.00	25.00'	-	25.28'	01°21'42"	07°59'51"
21+00.00	25.00'	-	25.28'	01°21'42"	09°21'33"
21+25.00	25.00'	-	25.28'	01°21'42"	10°43'14"
21+50.00	25.00'	-	25.28'	01°21'42"	12°04'56"
21+58.80	8.80'	-	8.90'	00°28'45"	12°33'41"
21+75.00	16.20'	-	16.38'	00°52'58"	13°26'38"
22+00.00	25.00'	-	25.28'	01°21'42"	14°48'19"
22+25.00	25.00'	-	25.28'	01°21'42"	16°10'01"
22+50.00	25.00'	-	25.28'	01°21'42"	17°31'43"
22+75.00	25.00'	-	25.28'	01°21'42"	18°53'25"
23+00.00	25.00'	-	25.28'	01°21'42"	20°15'06"
23+22.78	22.78'	-	23.03'	01°14'25"	21°29'32"

Def/Ft = 3.26782 Min.

△ = 27°11'48" R = 474.00' T = 114.66' L = 224.99' LC = 222.89'
CURVE DATA BASED ON WATERLINE Δ/2 = 13°35'54"

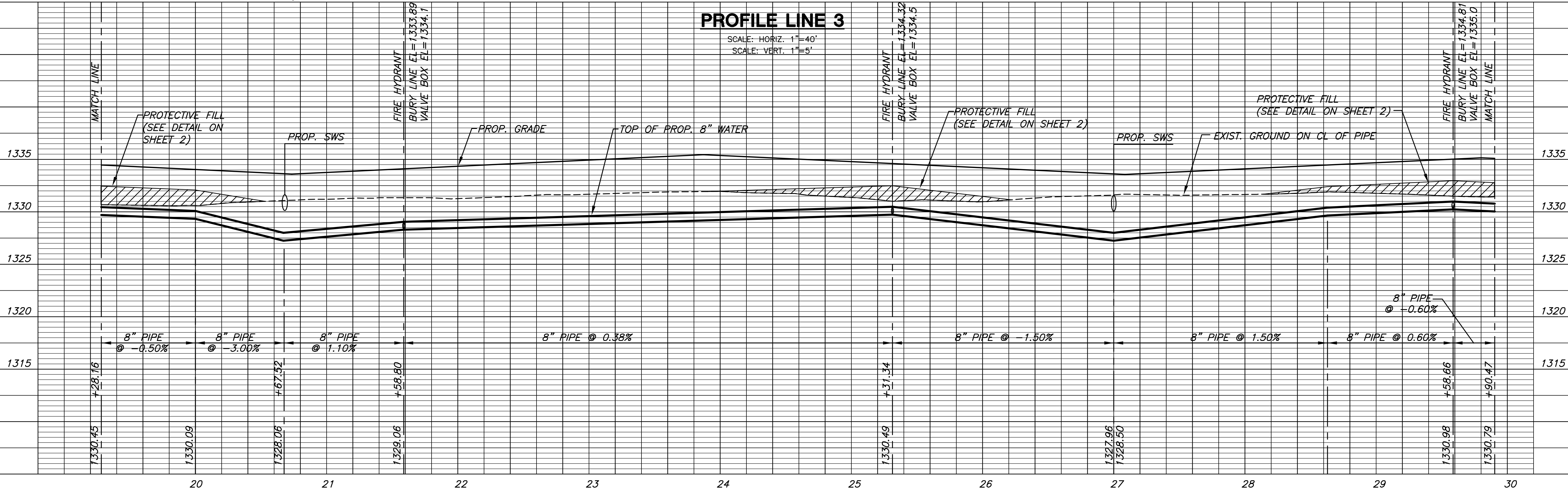
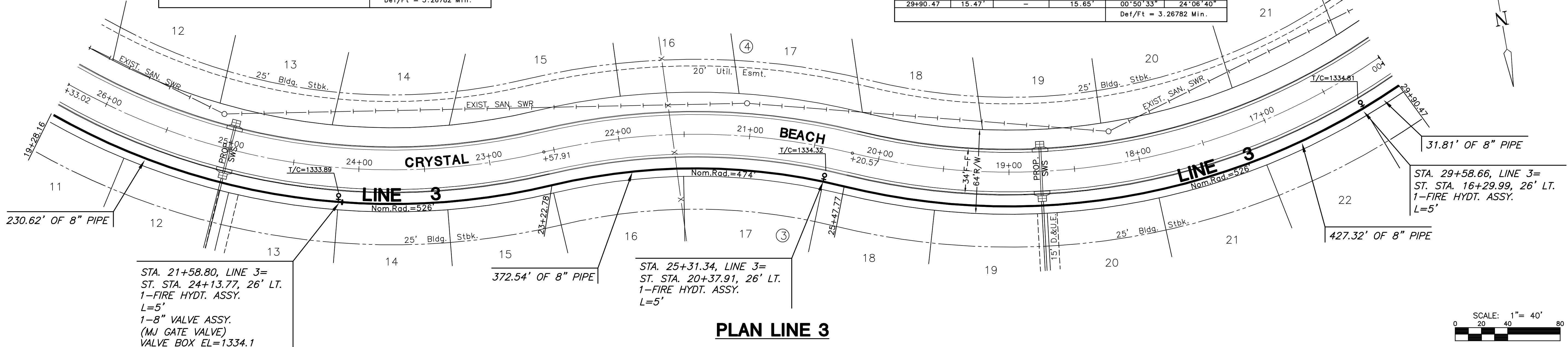
STATION	ARC	CHORD LENGTH		DEFLECTION	TOTAL DEFLECTION
		6'LT Offset	6'RT Offset		
23+22.78	-	-	-	00°00'00"	00°00'00"
23+50.00	27.22'	-	26.87'	01°38'42"	01°38'42"
23+75.00	25.00'	-	24.68'	01°30'39"	03°09'22"
24+00.00	25.00'	-	24.68'	01°30'39"	04°40'01"
24+25.00	25.00'	-	24.68'	01°30'39"	06°10'41"
24+50.00	25.00'	-	24.68'	01°30'39"	07°41'20"
24+75.00	25.00'	-	24.68'	01°30'39"	09°12'00"
25+00.00	25.00'	-	24.68'	01°30'39"	10°42'39"
25+25.00	25.00'	-	24.68'	01°30'39"	12°13'19"
25+31.34	6.34'	-	6.26'	00°22'59"	12°36'18"
25+47.77	16.43'	-	16.23'	00°59'36"	13°35'54"

Def/Ft = 3.62632 Min.

△ = 48°13'20" R = 526.00' T = 235.41' L = 442.70' LC = 429.75'
CURVE DATA BASED ON WATERLINE Δ/2 = 24°06'40"

STATION	ARC	CHORD LENGTH		DEFLECTION	TOTAL DEFLECTION
		6'LT Offset	6'RT Offset		
25+47.77	-	-	-	00°00'00"	00°00'00"
25+75.00	27.23'	-	27.54'	01°28'58"	01°28'58"
26+00.00	25.00'	-	25.28'	01°21'42"	02°50'41"
26+25.00	25.00'	-	25.28'	01°21'42"	04°12'23"
26+50.00	25.00'	-	25.28'	01°21'42"	05°34'04"
26+75.00	25.00'	-	25.28'	01°21'42"	06°55'46"
27+00.00	25.00'	-	25.28'	01°21'42"	08°17'28"
27+25.00	25.00'	-	25.28'	01°21'42"	09°39'09"
27+50.00	25.00'	-	25.28'	01°21'42"	11°00'51"
27+75.00	25.00'	-	25.28'	01°21'42"	12°22'33"
28+00.00	25.00'	-	25.28'	01°21'42"	13°44'15"
28+25.00	25.00'	-	25.28'	01°21'42"	15°05'56"
28+50.00	25.00'	-	25.28'	01°21'42"	16°27'38"
28+75.00	25.00'	-	25.28'	01°21'42"	17°49'20"
29+00.00	25.00'	-	25.28'	01°21'42"	19°11'01"
29+25.00	25.00'	-	25.28'	01°21'42"	20°32'43"
29+50.00	25.00'	-	25.28'	01°21'42"	21°54'25"
29+58.66	8.66'	-	8.76'	00°28'18"	22°22'43"
29+75.00	16.34'	-	16.53'	00°53'24"	23°16'07"
29+90.47	15.47'	-	15.65'	00°50'33"	24°06'40"

Def/Ft = 3.26782 Min.



LINE 3
SHEET TITLE
448-90356
PROJECT NUMBER

DESIGN BY: DFL
DRAWN BY: KKL
CHECKED BY: GJA

ISSUED: May 2008
REVISED:

SHEET NO.
6 of 16

PLOT: Wednesday, June 04, 2008 @ 09:50AM

J:\CIVIL\06608\WDR\10TH_ADD\06608_C3.DWG