

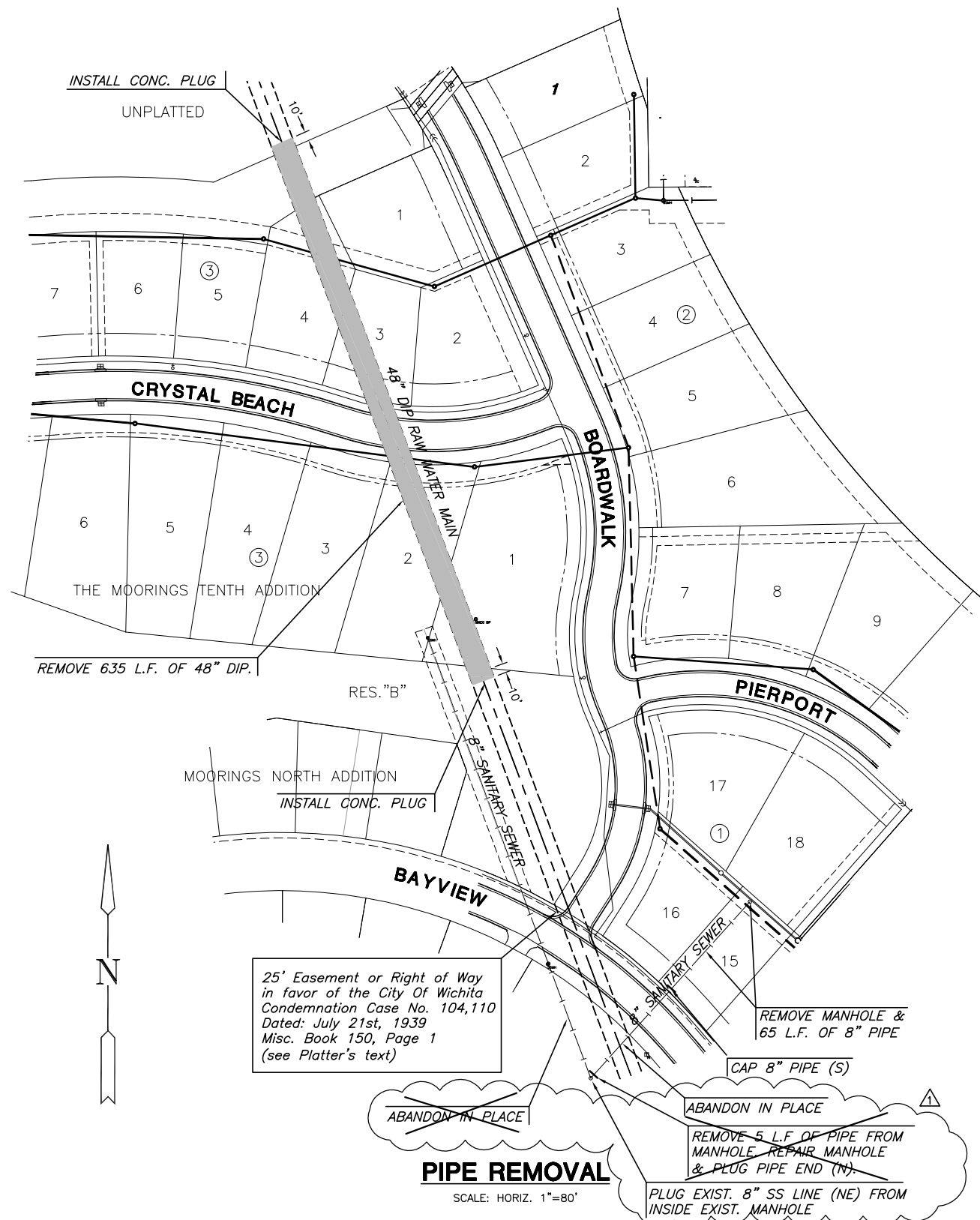
LATERAL 14, MAIN 15, SS #23
THE MOORINGS TENTH ADDITION

LINE 5
SHEET TITLE
468-84467
PROJECT NUMBER

DFL
DESIGN BY
DMU
DRAWN BY
GJA
CHECKED BY

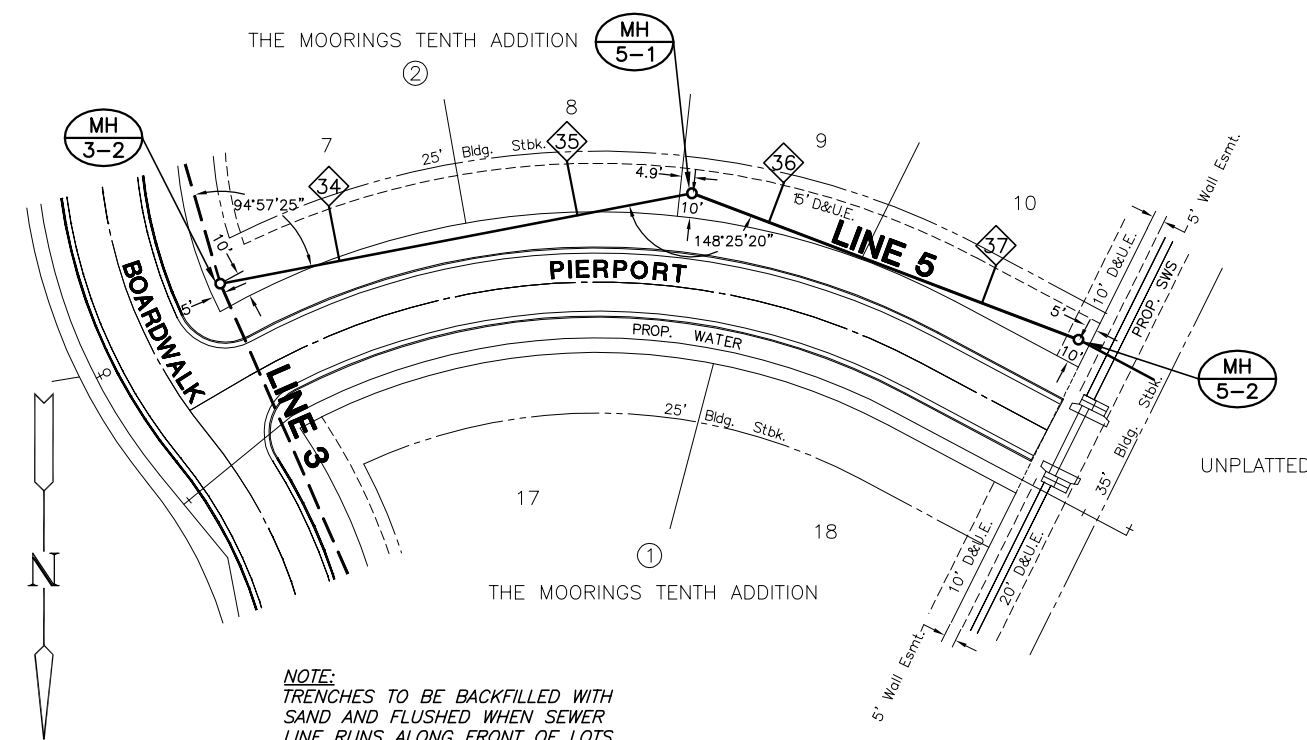
ISSUED
May 2008
REVISED
6-10-08

SHEET NO.
13 of 21

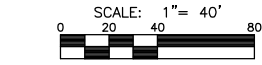


- 48" RAW WATER MAIN REMOVAL NOTES:**
1. REMOVE 635 L.F. OF 48" DIP.
 2. BACKFILL TRENCH IN 6" LIFTS TO EXISTING GROUND LEVEL & COMPACT TO 95% STD. DENSITY.
 3. BORROW AVAILABLE ON SITE STOCKPILE LOCATED NORTH OF MOORINGS TENTH ADDITION.
 4. DISPOSAL OF PIPE TO BE OFFSITE.
 5. ALL COSTS ASSOCIATED WITH THIS WORK SHALL BE SUBSIDIARY TO "REMOVAL OF ABANDONED 48" RAW WATER MAIN".

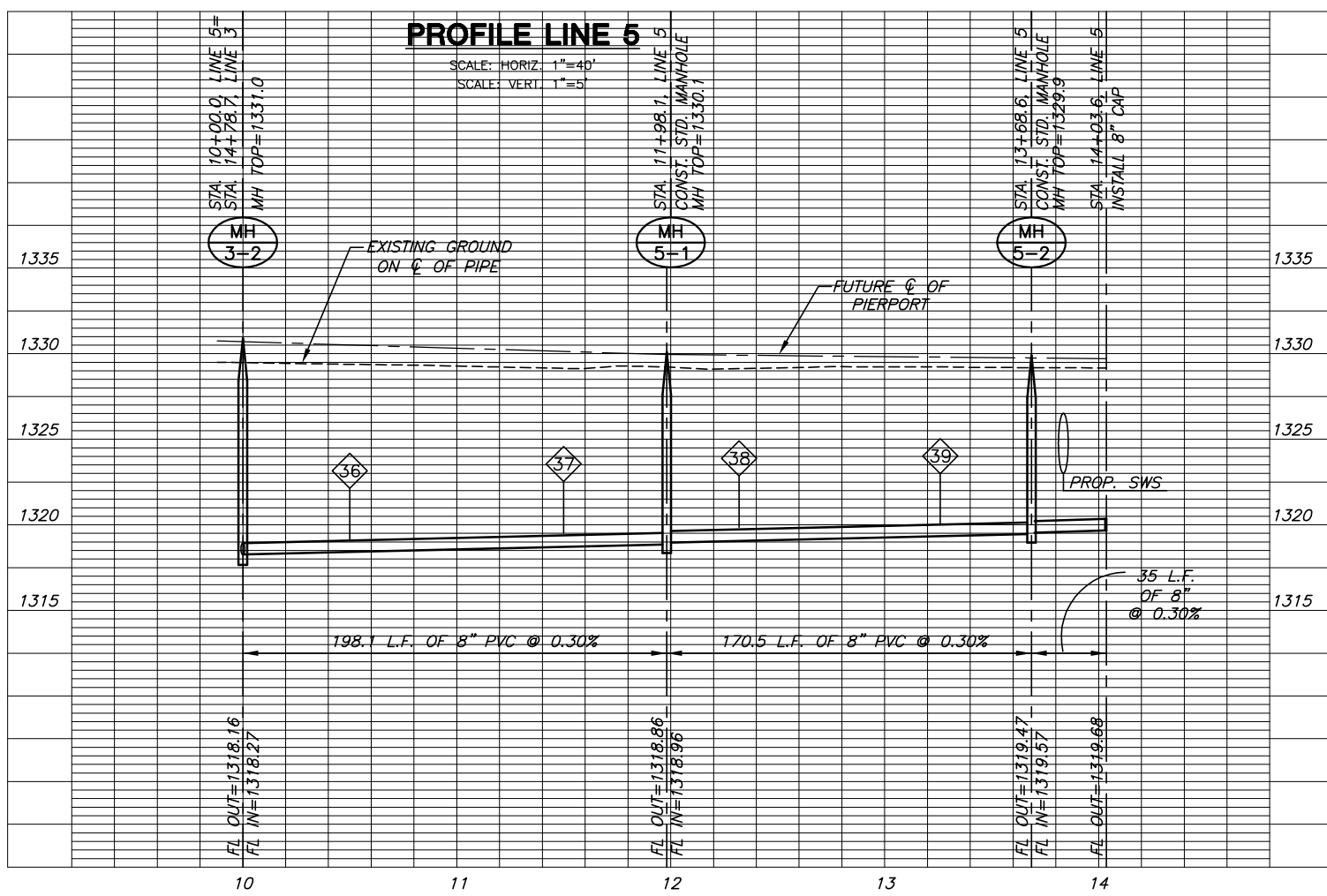
- 8" SANITARY SEWER MANHOLE & PIPE REMOVAL NOTES:**
1. SEED/SOD IN LIKE KIND ANY AREA DISTURBED SOUTH OF BAYVIEW.
 2. DISPOSAL OF PIPE TO BE OFFSITE.
 3. ALL COSTS ASSOCIATED WITH THIS WORK SHALL BE SUBSIDIARY TO THE PROJECT.



PLAN LINE 5



NOTE:
TRENCHES TO BE BACKFILLED WITH SAND AND FLUSHED WHEN SEWER LINE RUNS ALONG FRONT OF LOTS.



PROFILE LINE 5

SCALE: HORIZ. 1"=40'
SCALE: VERT. 1"=5'