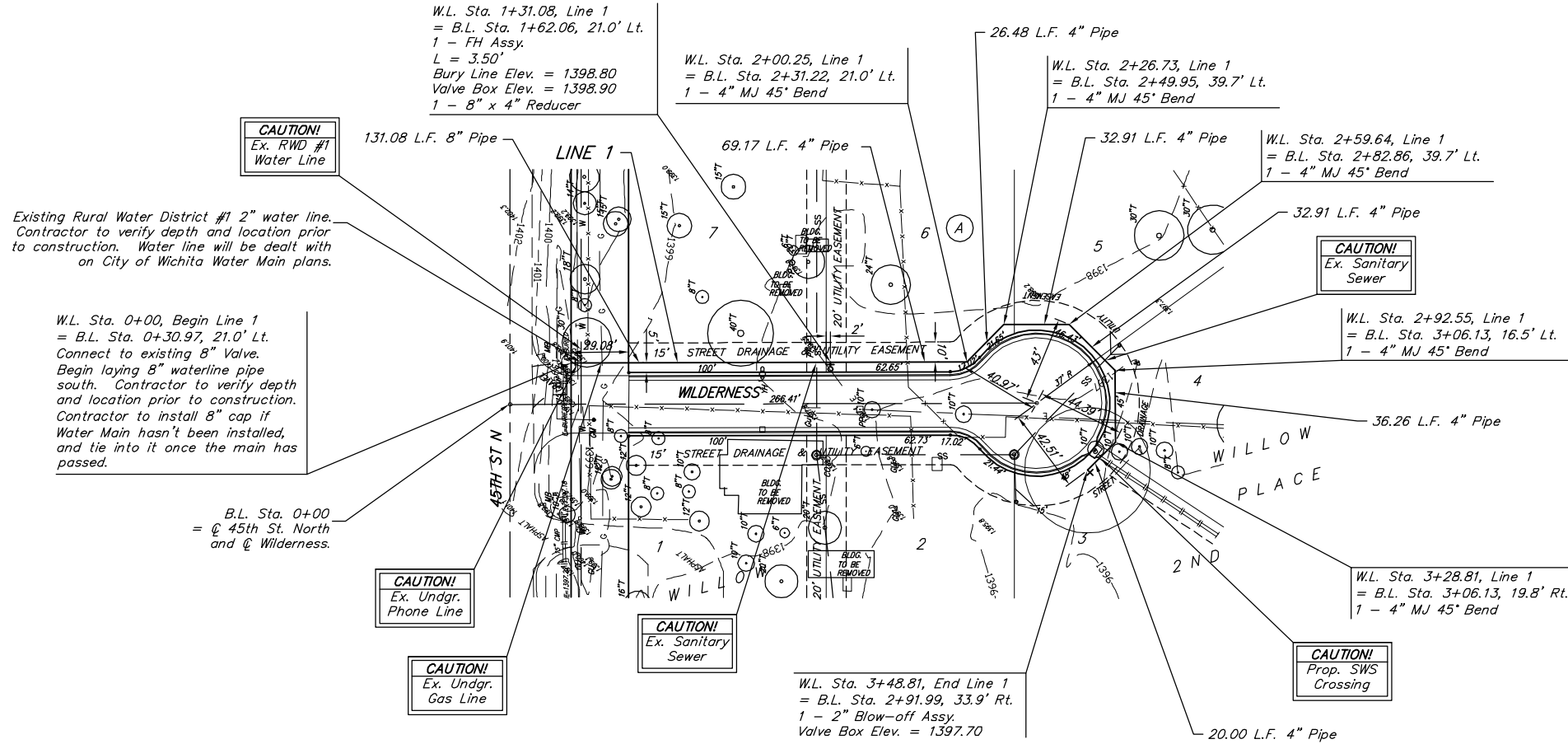


BENCHMARK:
 3/4" IRON IN CONCRETE NORTH
 1/4 CORNER
 SEC. 29, TWP. 26 S. R-2-E
 ELEVATION: 1400.30 (NGVD 29)

Scale: 1" = 40' Horizontal
 1" = 5' Vertical
 • = Iron



Existing Rural Water District #1 2" water line. Contractor to verify depth and location prior to construction. Water line will be dealt with on City of Wichita Water Main plans.

W.L. Sta. 0+00, Begin Line 1 = B.L. Sta. 0+30.97, 21.0' Lt. Connect to existing 8" Valve. Begin laying 8" waterline pipe south. Contractor to verify depth and location prior to construction. Contractor to install 8" cap if Water Main hasn't been installed, and tie into it once the main has passed.

B.L. Sta. 0+00 = C 45th St. North and C Wilderness.

CAUTION!
Ex. RWD #1 Water Line

CAUTION!
Ex. Undgr. Phone Line

CAUTION!
Ex. Undgr. Gas Line

CAUTION!
Ex. Sanitary Sewer

CAUTION!
Ex. Sanitary Sewer

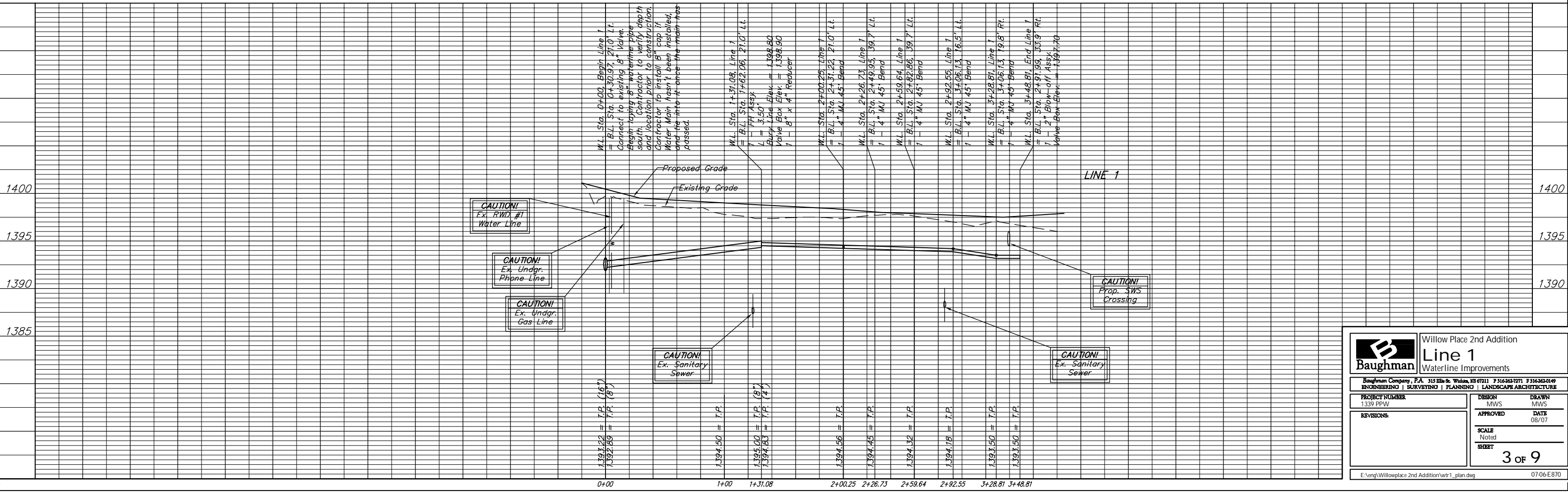
CAUTION!
Prop. SWS Crossing

Rural Water District #1
 134 N. Oliver
 P.O. Box 580
 Kechi, KS 67067
 744-3173
 Attn: Donna

B.L. 1 Sta. = Centerline of Wilderness

W.L. Sta. 3+48.81, End Line 1 = B.L. Sta. 2+91.99, 33.9' Rt. 1 - 2" Blow-off Assy. Valve Box Elev. = 1397.70

*** All Grades are to Top of Pipe unless noted otherwise ***



Baughman Willow Place 2nd Addition
Line 1
 Waterline Improvements

PROJECT NUMBER: 1339 PPW
 DESIGN: MWS
 DRAWN: MWS
 APPROVED: [Signature]
 DATE: 08/07
 SCALE: Noted
 SHEET: 3 of 9

E:\eng\Willowplace 2nd Addition\wlr1_plan.dwg 07-06-E870