

**GENERAL NOTES:**

1. Contractor will be required to provide notice to utility companies a minimum of twenty-four (24) hours prior to any excavation, as follows:

Kansas One-Call 687-2470

The Contractor must notify the following in case of an emergency:

Cox Communications 262-4270  
 Kansas Gas Service 1-888-482-4950  
 Westar Energy 383-8850  
 Aquila Energy 1-800-303-0357  
 SBC 268-2245  
 City of Wichita Water Dept. 268-4563  
 City of Wichita Sewer Maint. 268-4024  
 City of Wichita Storm Sewer Maint. 268-4090  
 City of Wichita Traffic Maint. 268-4034  
 Conoco Pipeline Co. 1-800-231-2551  
 Southern Star Pipeline Co. 529-6600  
 Phillips Pipeline Co. 1-800-788-8230  
 Jayhawk Pipeline Co. 1-888-542-9373

2. Utility service lines, poles, valve boxes, meters, and etcetera are to be adjusted as necessary by others prior to construction unless the plans specifically call for their adjustment by the Contractor or unless the plans specifically identify a utility to be adjusted by its owner during construction. Existing utilities and their location, as shown on the plans, represent the best information obtainable for design. The Contractor will be required to work around existing utilities within the right-of-way which do not conflict with proposed construction.

3. Rubble from the removal of miscellaneous structures and excess excavation which is to be wasted shall be disposed of on sites to be provided by the Contractor. These sites shall be approved by the Engineer as to suitability, appearance and site location. Locations, in the opinion of the Engineer, that will leave an unsightly appearance will not be approved. All disposal sites must be approved by the Kansas Department of Health and Environment. Material either stockpiled or disposed of in a flood plain would require a Kansas State Board of Agriculture permit. Any material dumped in waters of the United States or wetlands is subject to U.S. Corps. of Engineers permitting regulations. Any material buried or stockpiled beyond approved construction limits would require additional archaeological investigations unless buried in a previously approved borrow location.

4. Trees and shrubs in public right-of-way which are in direct conflict with proposed new construction shall be removed by the Contractor with the Engineer's approval. Trees and shrubs which are not in direct conflict with proposed new construction shall be saved and protected from damage.

5. The Contractor shall give all property owners and/or tenants of developed property abutting the construction of this project a minimum of ten (10) days advance notice prior to start of construction.

6. The Contractor shall be responsible for preserving property irons. The Contractor will be required to re-establish any property irons which are damaged or destroyed by his construction operations. Such irons shall be re-established by a licensed land surveyor in accordance with state laws.

7. All existing and proposed erosion control measures including silt fencing, erosion control mat, straw bales, inlet barriers, and const. entrance shall be maintained throughout construction by the contractor and until project is accepted by the City of Wichita. The on-site engineer shall complete weekly reports on the status of erosion control measures. The contractor shall be required to comply with maintenance and/or replacement of erosion control measures as determined by the on-site engineer until project is accepted by City of Wichita. Maintenance and/or replacement of erosion control measures to be paid by L.S. bid item "Site Clearing & Restoration"

8. All excess excavation shall remain on-site and shall be stockpiled or spread at a location determined by the engineer.

9. The Contractor shall adjust water valve boxes and fire hydrants as directed by the Engineer at the price bid for said adjustments. The Water Department shall field locate water valves one time during construction when requested by Contractor. It shall be the Contractor's responsibility to preserve such field locations during the construction process. Water valves, water valve boxes or fire hydrants damaged during construction shall be repaired by the Contractor at his own expense.

10. All water mains and appurtenances shall be installed in accordance with City of Wichita, Kansas Standard Specifications for Water Main Installations.

11. Opening and closing of water valves shall be done slowly to prevent damage to the water distribution system from water hammer. All valves closed by the contractor must be reopened as new construction permits. Project inspector must ascertain that any valve closed by the Contractor is reopened. Contractor will be permitted to operate water valves only when the project inspector assigned to the project is present.

12. All areas disturbed within 45th St. North R/W during construction shall be seeded, mulched, and fertilized as follows (Permanent Seeding):

Seed: Kansas Premium Fescue Blend: 8 lbs./1000 sq. ft.  
 Mulch: Prairie Hay: 2 tons/acre  
 Fertilizer: 12-24-12: 850 lbs./acre

All other areas disturbed during construction shall be seeded at 300 lbs./acre with Rye Grass immediately following construction in that area. Contractor shall prepare ground per City Specifications. All seeding operations shall conform to City of Wichita Standard Specifications. All costs associated with seeding, mulching, and fertilizing shall be included in bid item "Project Seeding."

13. The developer for this project is Mike Brand, and may be contacted at (316) 516-4298.

Private Project Waterline  
 WATER DISTRIBUTION SYSTEM  
 to serve  
**WILLOW PLACE 2ND ADDITION**  
 CITY OF WICHITA, KANSAS

James L. Armour, P.E. City Engineer

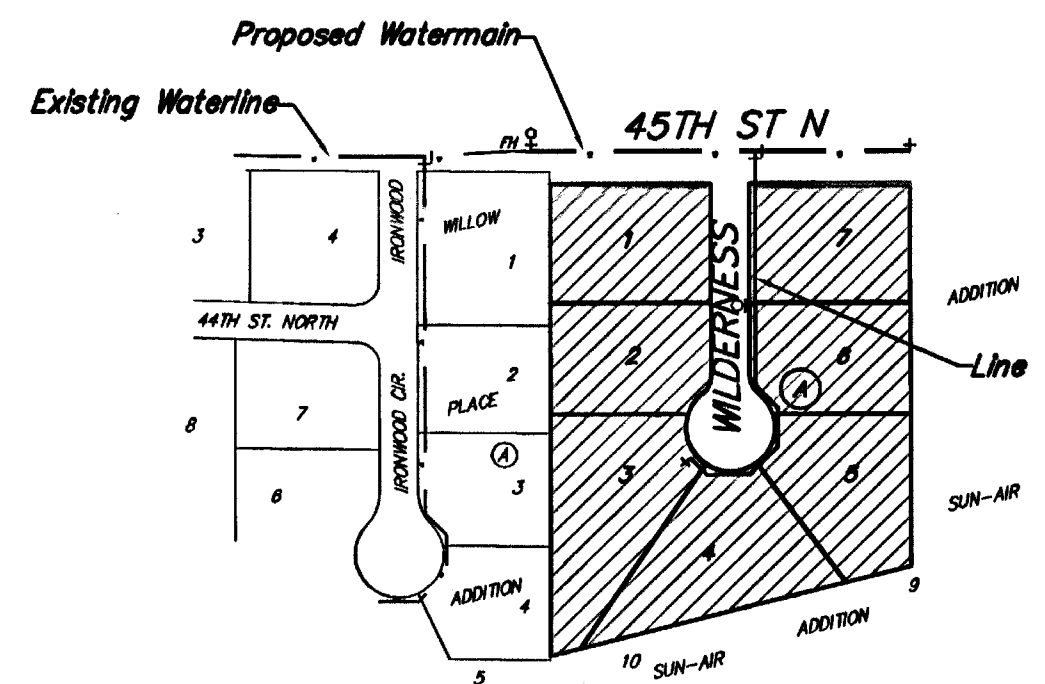
Project Number  
 1339 PPW

O.C.A. Number  
 607853

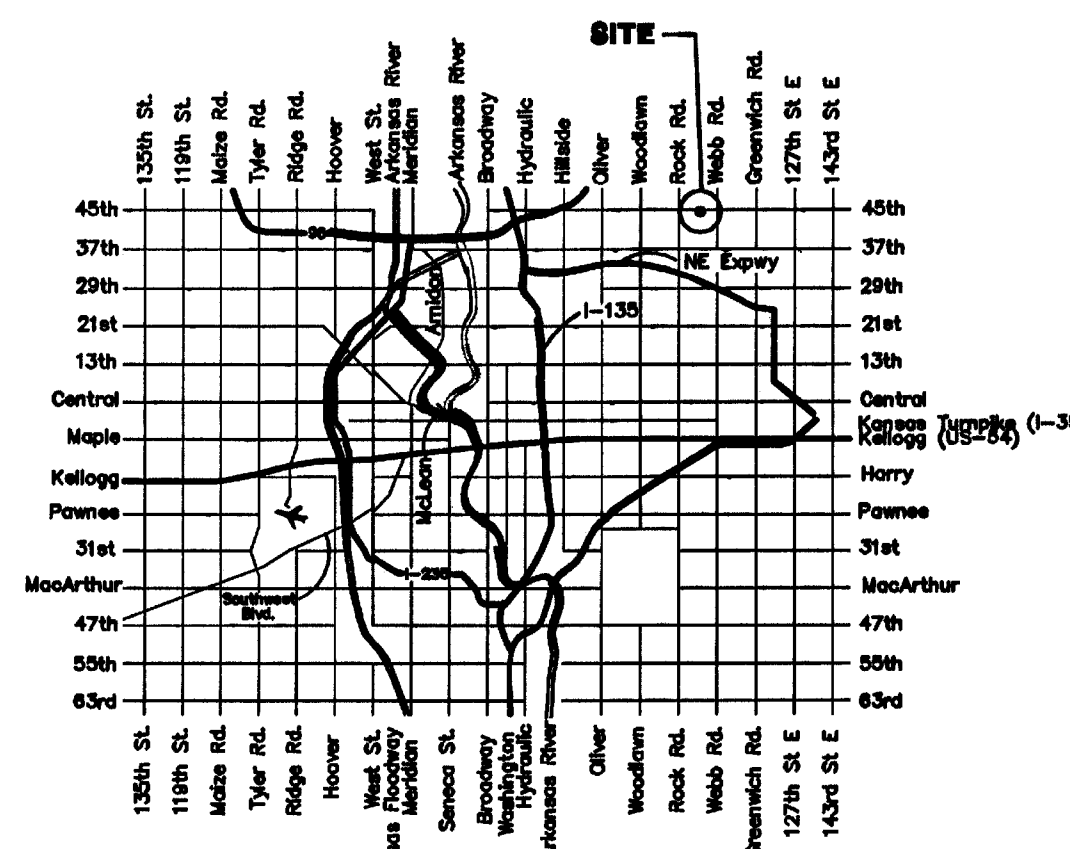
As Built Plans  
 Contractor: Wildcat Const Co.  
 Inspector: Don Eddingfield, Baughman Co.  
 pdf's by: KEK, 6/24/08

**Benchmarks**

3/4" IRON IN CONCRETE NORTH 1/4 CORNER  
 SEC. 29, TWP. 26 S. R-2-E  
 ELEVATION: 1400.30 (NGVD 29)



Benefit District



Vicinity Map

APPROVED AS NOTED  
 BY CITY ENGINEER OF WICHITA,  
 BY WICHITA WATER & SEWER DEPARTMENT,  
 & BY WICHITA FIRE DEPARTMENT

Public Works 8/21/07  
 Water & Sewer 8/21/07  
 Fire 8-21-07

NOTE TO CONTRACTORS

Public Property:  
 Inspection and testing for the waterline is to be provided by a Licensed Consulting Engineering Firm under contract with the Owner/Developer. Said inspection to be in accordance with the City of Wichita standard construction engineering practices and certified by a Professional Engineer Licensed in the state of Kansas. No work shall be performed in dedicated easements or public right-of-way by the Contractor without such inspection nor shall any work be commenced without written authorization by the City Engineer. All Construction and Materials shall comply with the City or Wichita Specifications and Standards (on file and available in the City Engineer's Office).

**Sheet Index**

Title Sheet	1
Water Detail Sheet	2
Line 1	3
Erosion Control Plan	4
Erosion Control Details	5-B
Copy of Plat	9

