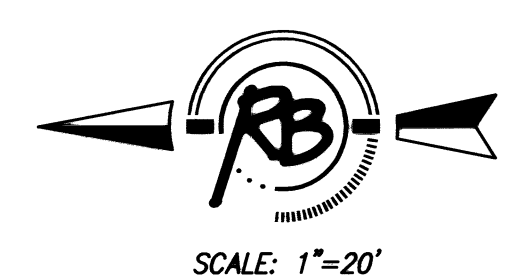
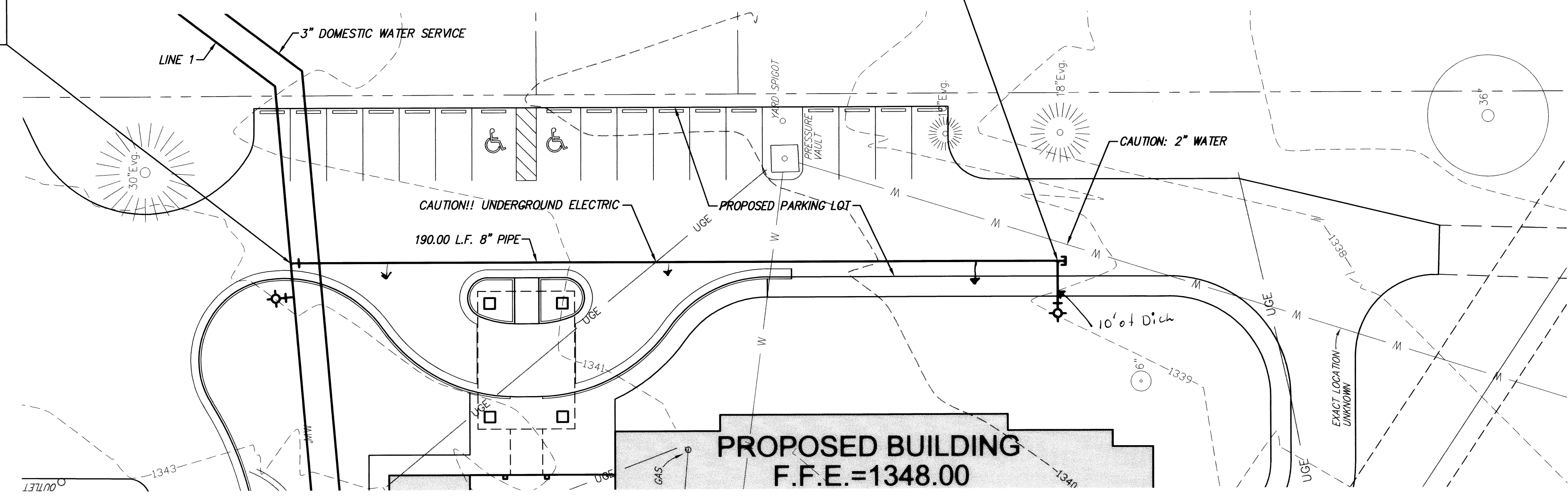
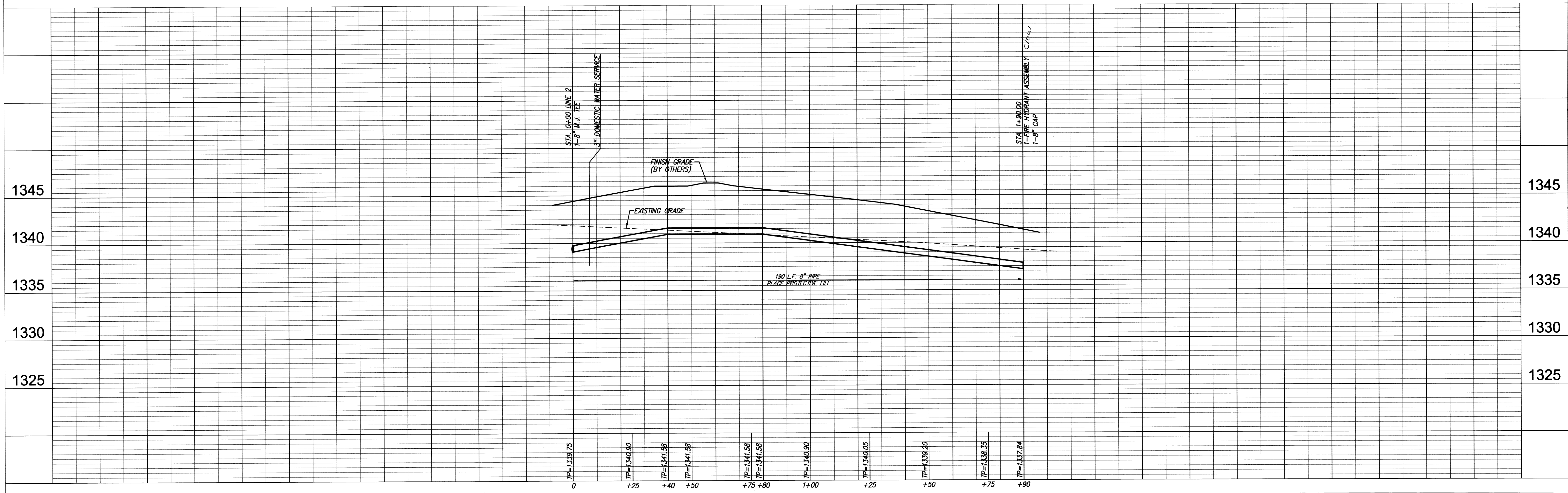


STA. 0+00 LINE 2 =
 STA. 1+65.98 LINE 1
 BL. STA. 0+20.22 541.04' RT.
 1-8" M.J. TEE
 1-8" VALVE ASSEMBLY (S)
 1-6" VALVE BOX
 VALVE BOX ELEV.=1345.32

STA. 1+90.00
 BL. STA. 0+20.78 351.04' RT.
 1-FIRE HYDRANT ASSEMBLY
 L=1300' CLOW
 VALVE BOX ELEV.=1342.08
 BURY LINE ELEV.=1342.18
 1-8" PLUG (S)



LINE 2 moved 3' west



PROJECT NUMBER: 1337
 DRAWING FILE: ENGINEERING BASE (water)
 DESIGN: TOR
 DRAWN: EJB
 REVISION: REVISED
 DATE: July 27, 2007
 REVIEW: REVIEW
 RUGGLES & BOHM, P.A.
 Engineering, Surveying, Land Planning
 600 North Main Street, Suite 1700
 Wichita, Kansas 67202
 www.rugblesandbohm.com
 E-mail: info@rugbles.com

SISTERS OF ST. JOSEPH APARTMENT
 WATER PLAN AND PROFILE
 WICHITA, KANSAS

SHEET
 35 OF 36