

**GENERAL NOTES**

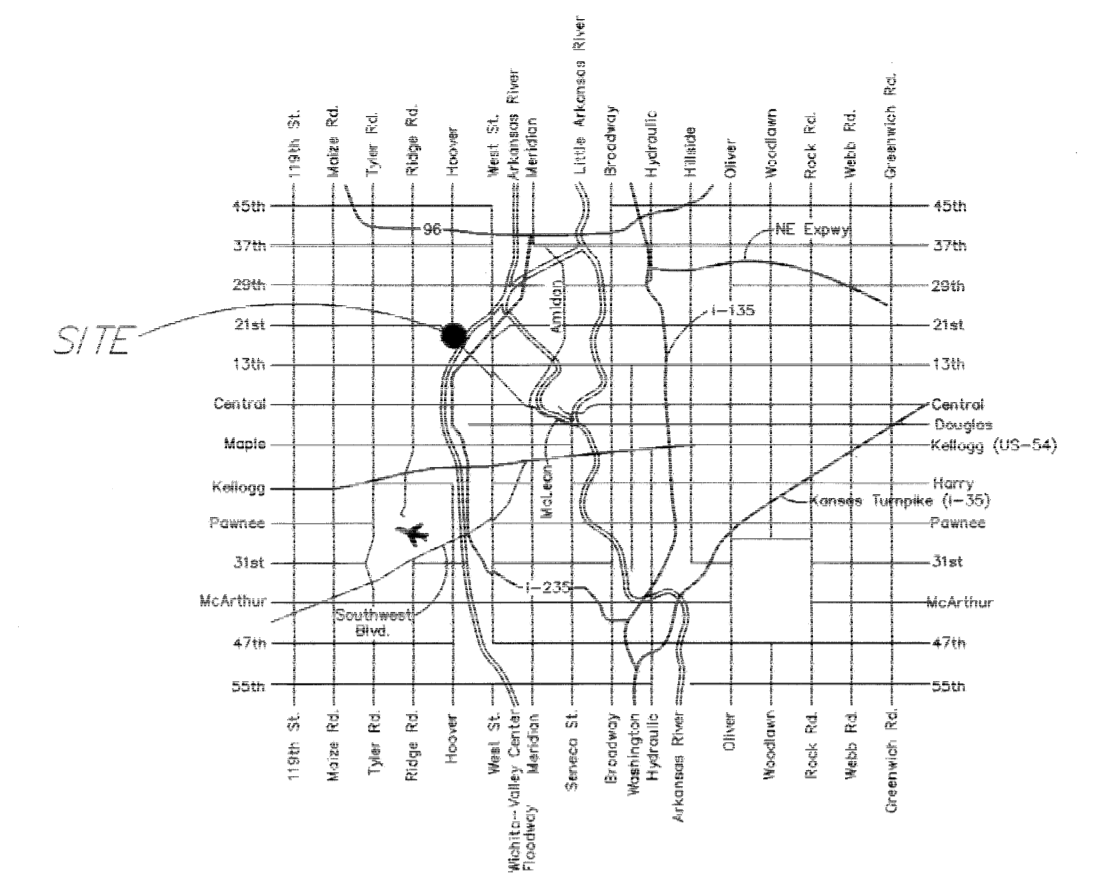
- Contractor will be required to provide notice to utility companies a minimum of twenty-four (24) hours prior to any excavation, as follows:  
 Kansas One-Call 687-2470  
 The Contractor must notify the following in case of an emergency:  
 Westar Energy 383-8650  
 383-8600  
 Aquila Natural Gas  
 Southwestern Bell Telephone Company 1-571-2611  
 City of Wichita Water Department 268-4908  
 City of Wichita Sewer Department 268-4024  
 Kansas Gas Service 832-3168  
 or 832-3167  
 Aquila Networks 942-8811  
 or 1-800-303-0357
- Exist, utilities and their locations, as shown on the plans, represent the best information obtainable for design. Location information has been obtained from the various utility companies and is either from company record drawings or company-provided field locations. The Contractor will be required to work around existing utilities which do not conflict with proposed construction.
- The Contractor to verify utility locations prior to construction of this project.
- Utility service and installation shall be coordinated with the respective utility owners. Contacts are:  
 Kansas Gas Service Charlene Lawless 832-3121  
 Westar Energy Shane Price 261-6251  
 Aquila Networks John Stark 942-8811  
 Wichita Water Paul Bryant 268-4555  
 Southwestern Bell Jim Toben 268-2759  
 Cox Communications Mark Anaya 262-4270
- All lawn/turf areas disturbed by construction of proposed improvements shall be restored with sod. All sodding work shall be in accordance with the City of Wichita standard specifications and the City of Wichita administrative regulation No. AR78 which governs cleanup and replacement following construction. All costs for this work shall be subsidiary to the lump sum price bid for "Site Restoration."
- Traffic affected by the construction of this project shall be handled in accordance with the latest edition of the Manual on Uniform Traffic Control Devices.
- All commercial signs to be moved by others prior to construction.
- Properties within the project may have underground irrigation systems (lawn sprinklers) which conflict with the new construction. Contractor shall remove such components as needed during construction of the project. The irrigation system shall be reinstalled in like kind before project completion. Any irrigation system modifications required because of project improvements shall be coordinated with the property owner. Portions of underground irrigation systems not in conflict with construction shall be protected from damage and shall remain in place. All work related to underground irrigation/sprinklers shall be subsidiary to Site Restoration.
- Cuts made to paved surfaces on public property will be repaired by the City's contractor and charged against the owner / applicant. Unit repair Prices are available from the City at 268-4418. A surcharge may be applicable. Call 268-4418 for details. Repair costs to be paid prior to release of water Service if water service is affected.
- The contractor shall be responsible for preserving property irons. The contractor will be required to re-establish any property irons which are damaged or destroyed by his construction operations. Such irons shall be re-established by a licensed land surveyor in accordance with state laws.
- The maintenance and repair of the water facilities on site are the responsibility of the property owner after the two year maintenance period by the contractor.
- Construction shall be in accordance with the City of Wichita standard construction practices.

# FIRE LINE IMPROVEMENT TO SERVE

## Burlson Addition Lot 3, Block A, 2250 N. Hoover 1154 PPW (607853)

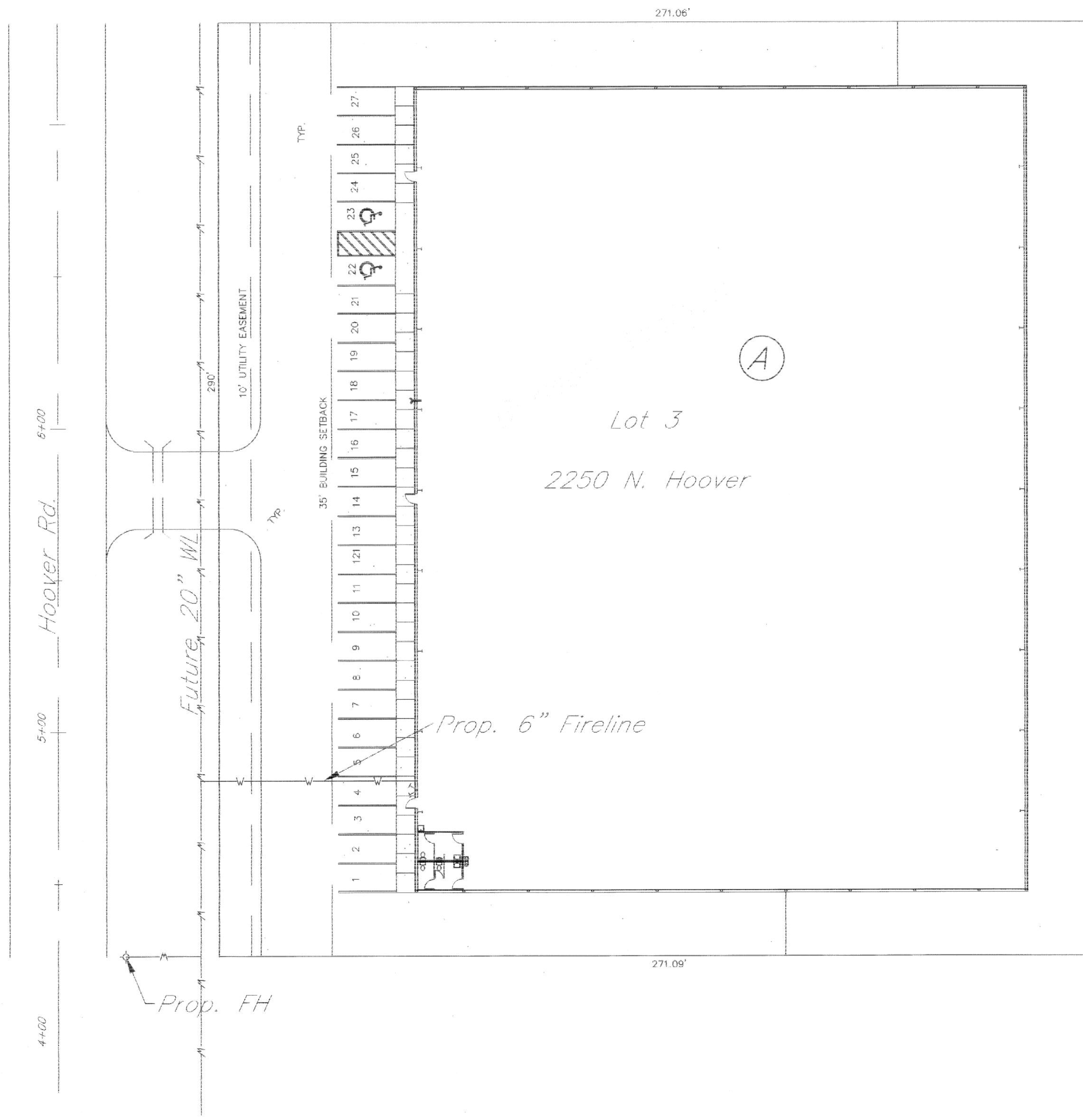
### CITY OF WICHITA, KANSAS JIM ARMOUR, CITY ENGINEER

INDEX OF SHEETS  
 1 Cover Sheet  
 2 Plan and Profile



LOCATION MAP

**As Built Plans:**  
**CONTRACTOR:** Midwest Fire Protection  
**INSPECTOR:** Tom Jones & Larry Gann,  
 K E Miller Engineering  
**.PDF by:** NWS, 06-25-08



APPROVED AS NOTED  
 BY CITY ENGINEER OF WICHITA,  
 BY WICHITA WATER & SEWER DEPARTMENT,  
 & BY WICHITA FIRE DEPARTMENT.

Public Works: *[Signature]* 9/11/05  
 Water & Sewer: *[Signature]* 9/13/05  
 Fire: *[Signature]* 9/14/05

NOTE TO CONTRACTORS  
**Public Property:**  
 Inspection and testing for the waterline is to be provided by a Licensed Consulting Engineering Firm under contract with the Owner/Developer. Said inspection to be in accordance with the City of Wichita standard construction engineering practices and certified by a Professional Engineer Licensed in the state of Kansas. No work shall be performed in dedicated easements or public right-of-way by the Contractor without such inspection nor shall any work be commenced without written authorization by the City Engineer. All Construction and Materials shall comply with the City or Wichita Specifications and Standards (on file and available in the City Engineer's Office).

**Private Property:**  
 Installation and testing for the fire protection line is to be performed by a City of Wichita licensed fire protection contractor in accordance with the fire codes as adopted by the City of Wichita. All material and construction practices for the fire protection line shall comply with the fire codes as adopted by the City of Wichita (available from the City of Wichita Fire Department). The Contractor shall not commence work without notification and approval of the Wichita Fire Department. Inspection of the fire protection line is to be provided by a licensed Engineering Firm under contract with the Owner/Developer and the Fire Department. The contractor shall not start work until the project inspector is assigned to the project and present on the site. Any work done without inspection will be required to be uncovered for inspection.

**AS BUILTS:**  
**CONTRACTOR:** Midwest Fire Protection  
**INSPECTOR:** Tom Jones & Larry Gann  
**COMPANY:** K.E. Miller Eng.  
**DATE:** 6/6/08



516 S. Market,  
 Wichita, KS 67202  
 316/264-0242

August 2005

Scale: 1 inch = 30 ft.  
 Benchmark:  
 COW Bench Mark, NW corner of intersection, 45.5' W of centerline, 28' N of centerline, 16' W of PP, 53.2' NW of section corner iron.  
 Elev. = 139.07 City Datum