

PLAN	CHECKED	DATE
	CHECKED	

PROFILE	CHECKED	DATE
	CHECKED	

COORDINATE LIST		
POINT	NORTH	EAST
7205	1,699,476.3710	1,687,895.0224
7206	1,699,479.6281	1,688,154.0019
7207	1,699,480.9486	1,688,258.9936
7208	1,699,479.4488	1,688,259.0125
7209	1,699,445.1114	1,688,259.4443
7210	1,699,443.6116	1,688,259.4632

⑦②①⑤ = COORDINATE POINT NO.

Sta. 7+41.0 SWS Line No. 2  
Begin 18" RCP Construction  
Install 259.0 L.F. 18" RCP (E)  
(Including End Section)

Install 77 L.F.  
Excavatable Flowable  
Fill to Elev. 177.8

CAUTION !!!  
Proposed 8" Water  
City of Wichita

Sta. 10+00.0 SWS Line No. 2=  
Private Dr. Sta. 41+92.49, 18.67' Lt.  
Const. Std. Precast Manhole  
Dia.=4'-0"  
Top Elev.=180.20  
Install 105.0 L.F. 15" RCP (E)  
Install 4 L.F. 15" RCP (N)(Stub) ≠  
See Sheet No. 7.

Sta. 11+05.0 SWS Line No. 2=  
Private Dr. Sta. 42+97.49, 18.67' Lt.  
Const. Std. Type 1A Curb Inlet  
L=5'-0", W=3'-0"  
Top Elev.=179.64  
Install 37.3 L.F. RCP (S)  
Install 4 L.F. 15" RCP (N)(Stub) ≠  
See Sheet No. 8.

Install 17 S.Y.  
Light Stone Riprap  
See Sheet No. 9.

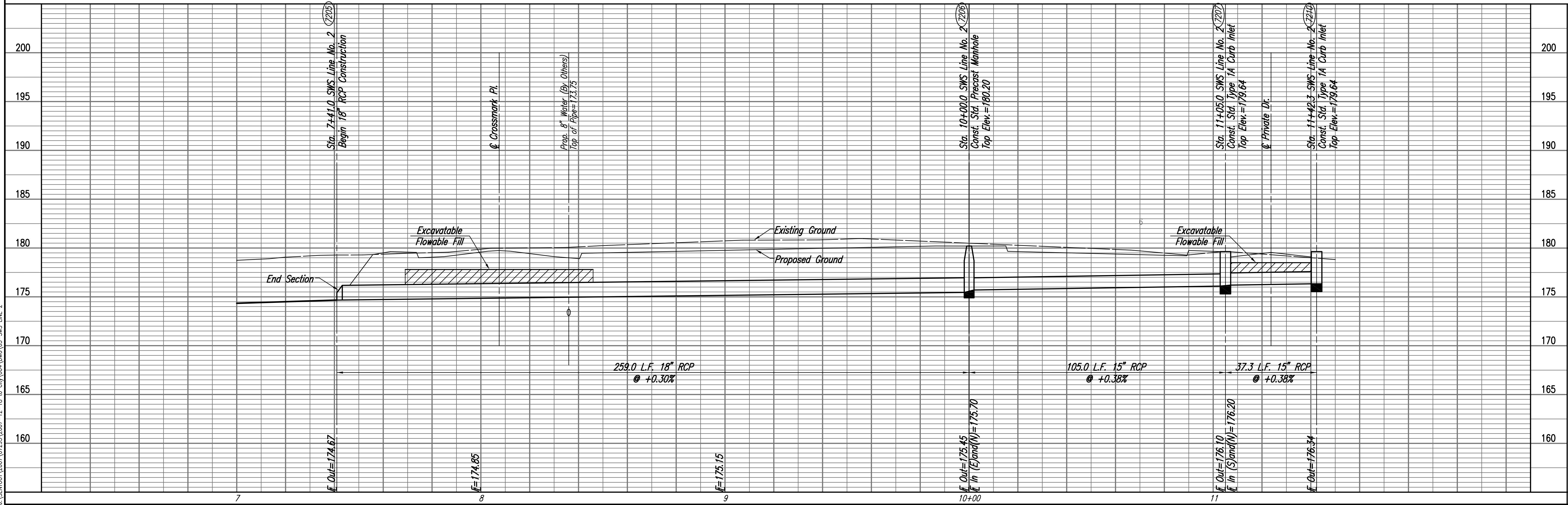
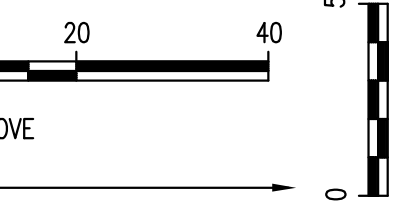
Sta. 40+00.0 @ Private Drive=  
Sta. 13+36.15 @ Crossmark Pl.

Install 33 L.F.  
Excavatable Flowable  
Fill to Elev. 178.5

≠ Install Pipe Plug.  
See Detail Sheet No. 9.

PLAN: LAT. & LONG.  
PROFILE: HORIZ. SAME AS ABOVE  
VERT.

SCALE:



Printed 12-13-2007 12:51:26 PM by BUS  
Plot Scale: 1/20 12-18-2007 2:11:43 PM  
J:\SENTOUT\2007\07293\2007-12-18 to CITY\004\DWG\05-SWS LINE 2

Professional Engineering Consultants, P.A.  
303 S. TORRENS, WICHITA, KANSAS 67202  
316-262-2291 • FAX 316-262-3003

Designed By: BMM  
Drawn By: BUS, FAT

Job No.: 35-07293-000  
Date: October 2007

CITY OF WICHITA PRIVATE PROJECT NO. 1835 PPS (607861)

JAMES L. ARMOUR, P.E.-CITY ENGINEER

CROSS POINT 2ND ADDITION  
PRIVATE STORM WATER SEWER IMPROVEMENTS

**SWS LINE NO. 2**