

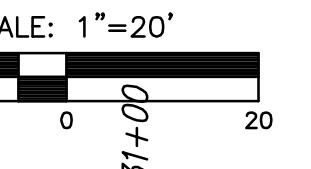
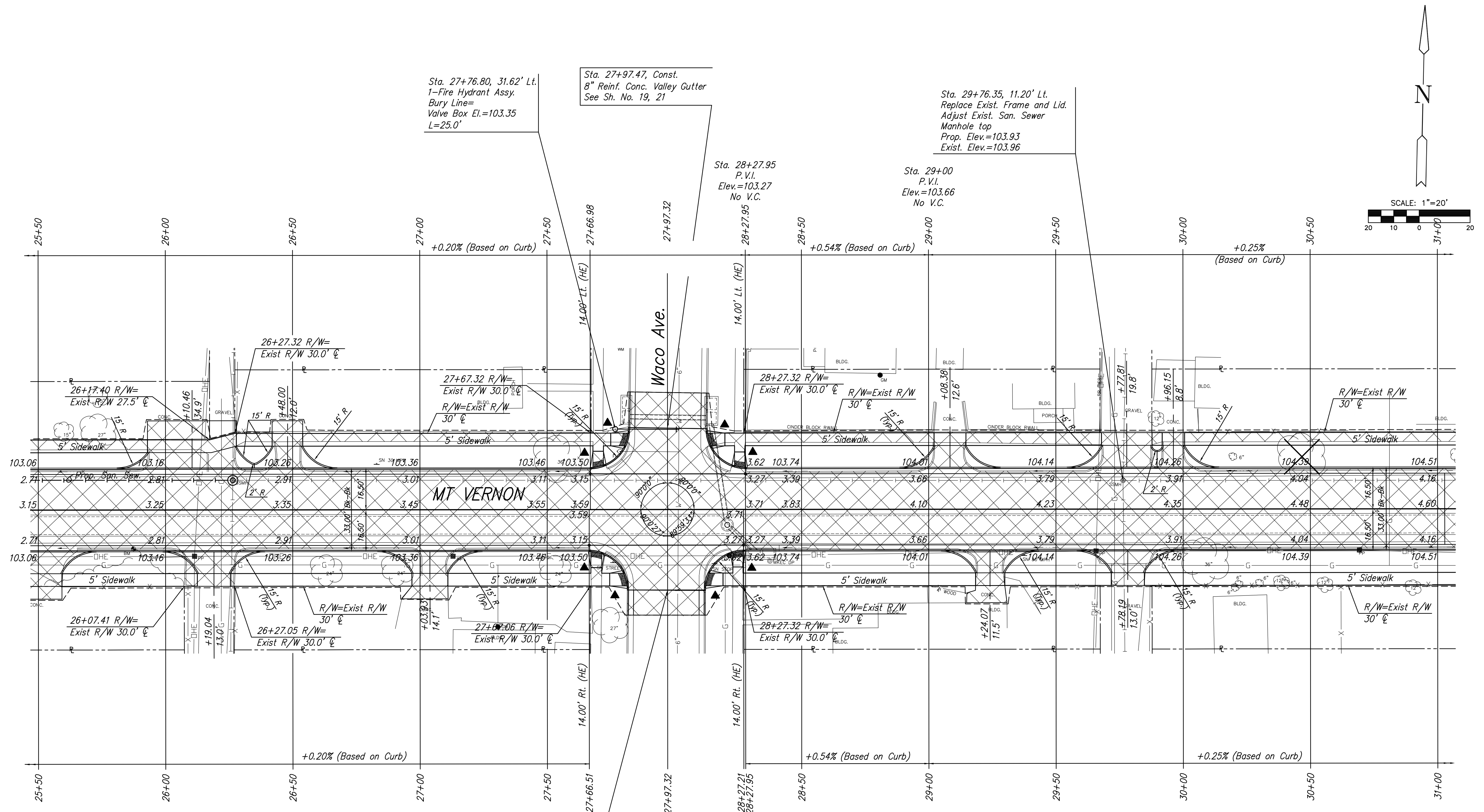
**MT VERNON STREET AND
DRAINAGE IMPROVEMENTS
FROM GREENWAY TO BROADWAY**

**PLAN SHEET
STA. 25+50
TO
STA. 31+00**
SHEET TITLE 472-84289
448-90385
468-84514
PROJECT NUMBER

JRA
DESIGN BY
JSB
DRAWN BY
JRA
CHECKED BY

ISSUED
May 27, 2008
REVISED

SHEET NO.
7 of 120



Sta. 27+76.80, 31.62' Lt.
1-Fire Hydrant Assy.
Bury Line=
Valve Box El.=103.35
L=25.0'

Sta. 27+97.47, Const.
8" Reinf. Conc. Valley Gutter
See Sh. No. 19, 21

Sta. 29+76.35, 11.20' Lt.
Replace Exist. Frame and Lid.
Adjust Exist. San. Sewer
Manhole top
Prop. Elev.=103.93
Exist. Elev.=103.96

Sta. 28+27.95
P.V.I.
Elev.=103.27
No V.C.

Sta. 29+00
P.V.I.
Elev.=103.66
No V.C.

Sta. 27+96.86, Const.
8" Reinf. Conc. Valley Gutter
See Sh. No. 19, 21

Sta. 28+27.95
P.V.I.
Elev.=103.27
No V.C.

Sta. 29+00
P.V.I.
Elev.=103.66
No V.C.

UTILITY ADJUSTMENTS				
STATION	OFFSET	EXISTING ELEVATION	PROPOSED ELEVATION	REMARKS
28+01.65	11.71' Lt.	103.20	103.30	Adj. Water Valve Box

- LEGEND**
- Pavement/Walk Removal
 - Construct Wheelchair Ramp
See Sht. No. 24