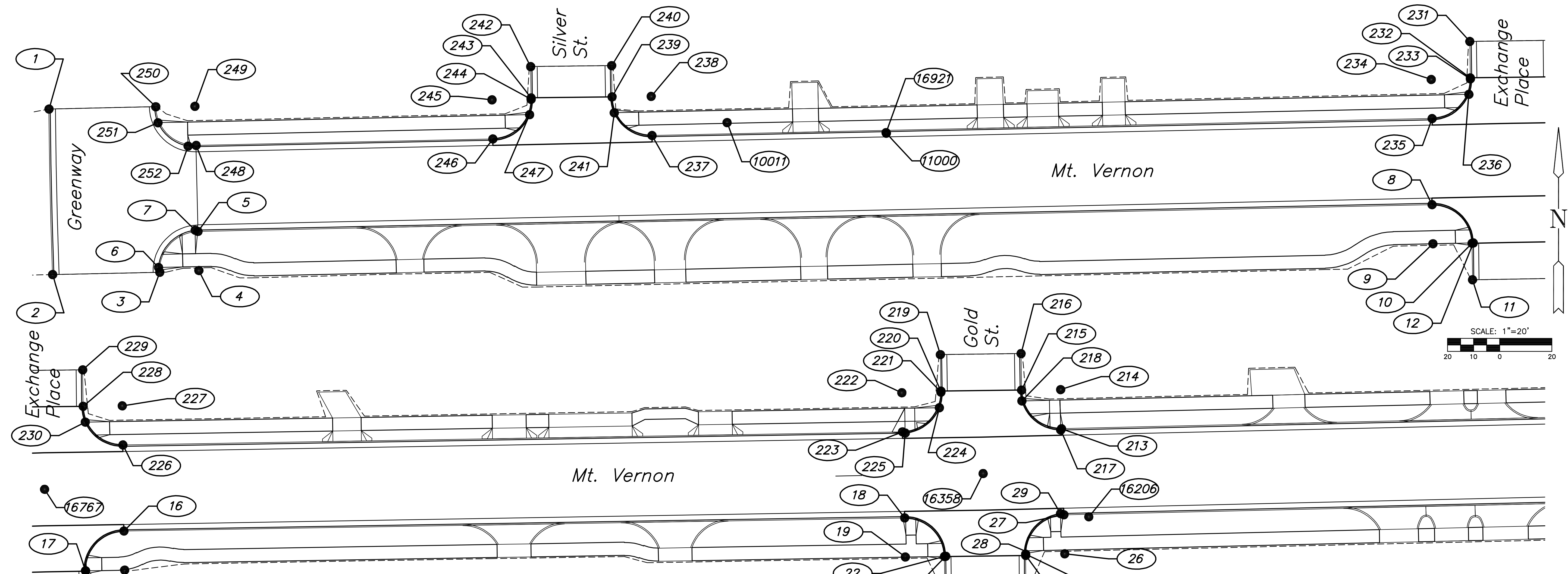


**MT VERNON STREET AND  
DRAINAGE IMPROVEMENTS  
FROM GREENWAY TO BROADWAY**



POINT NUMBER	STATION	OFFSET	NORTHING	EASTING	DESC
1			1675202.0479	1646104.7372	BC
2			1675138.5753	1646106.1254	BC
3			1675139.4662	1646147.2019	BC
4			1675140.1284	1646162.1873	RADI
5			1675155.1248	1646161.8620	PT
6			1675141.2935	1646146.7311	RAMP
7			1675155.5644	1646160.7810	RAMP
8			1675165.3882	1646635.1198	PC
9			1675150.3918	1646635.4450	RADI
10			1675150.5770	1646650.4438	PT
11			1675136.5889	1646650.6173	BC
12			1675150.7278	1646650.9413	RAMP
13			1675134.2149	1646681.5980	BC
14			1675151.2788	1646681.2738	PC
15			1675151.5637	1646696.2711	RADI
16			1675166.5616	1646696.0192	PT
17			1675151.3033	1646680.7733	RAMP
18			1675171.5902	1646995.4046	PC
19			1675156.5923	1646995.6565	RADI
20			1675156.7888	1647010.6553	PT
21			1675142.8000	1647010.8385	BC
22			1675156.8526	1647011.1544	RAMP
23			1675143.2072	1647041.9154	BC
24			1675157.1970	1647041.8068	BC
25			1675157.6957	1647041.8029	PC
26			1675157.8121	1647056.8025	RADI
27			1675172.8082	1647056.4564	PT
28			1675158.9558	1647041.3447	RAMP
29			1675173.2256	1647055.1666	RAMP
213			1675205.7965	1647055.5707	PC
214			1675220.7925	1647055.2246	RADI
215			1675220.6028	1647040.2258	PT
216			1675234.5917	1647040.0488	BC

POINT NUMBER	STATION	OFFSET	NORTHING	EASTING	DESC
217			1675205.2925	1647055.2558	RAMP
218			1675216.4291	1647040.3514	RAMP
219			1675234.2002	1647009.0981	BC
220			1675220.2117	1647009.3054	BC
221			1675219.8010	1647009.3115	PC
222			1675219.5787	1646994.3132	RADI
223			1675204.5808	1646994.5651	PT
224			1675213.8195	1647008.7035	RAMP
225			1675204.1328	1646995.6079	RAMP
226			1675199.5595	1646695.6138	PC
227			1675214.5573	1646695.3619	RADI
228			1675214.3715	1646680.3631	PT
229			1675228.3604	1646680.1897	BC
230			1675208.3181	1646681.1731	RAMP
231			1675227.9733	1646649.5766	BC
232			1675213.9850	1646649.7927	BC
233			1675213.6243	1646649.7983	PC
234			1675213.3926	1646634.8001	RADI
235			1675198.3961	1646635.1253	PT
236			1675207.7039	1646649.2184	RAMP
237			1675191.9086	1646335.9796	PC
238			1675206.9051	1646335.6544	RADI
239			1675206.7168	1646320.6555	PT
240			1675218.7058	1646320.5050	BC
241			1675200.5966	1646321.4962	RAMP
242			1675218.3157	1646289.4396	BC
243			1675206.3269	1646289.6105	BC
244			1675205.7953	1646289.6181	PC
245			1675205.5815	1646274.6196	RADI

POINT NUMBER	STATION	OFFSET	NORTHING	EASTING	DESC
246			1675190.5850	1646274.9448	PT
247			1675199.8927	1646289.0379	RAMP
248			1675188.1171	1646161.1465	PC
249			1675203.1104	1646160.6757	RADI
250			1675202.9358	1646145.6768	PT
251			1675196.8019	1646146.5176	RAMP
252			1675187.8282	1646158.0863	RAMP
10010			1675202.5100	1646756.8200	SDMD
10011			1675196.8600	1646364.7500	SDMD
10012			1675106.9500	1646084.1000	SDMD
11000			1675192.7800	1646425.8490	BM 2
16206			1675171.9960	1647066.0120	BM 3
16358			1675188.5980	1647025.4880	SD 3/4"PIPE
16767			1675182.5530	1646665.5810	SPIKE
16921			1675193.0110	1646425.7320	BM 2
17229			1675320.5930	1646103.4710	BM 1

PLOTTED: Tuesday, May 27, 2008 @ 04:28PM

J:\CIVIL\05620\DWG\PAV\05620-BUBBLEPAV1.DWG

JRA  
DESIGN BY  
JSB  
DRAWN BY  
JRA  
CHECKED BY

ISSUED  
May 27, 2008  
REVISED

SHEET NO.  
12 of 120