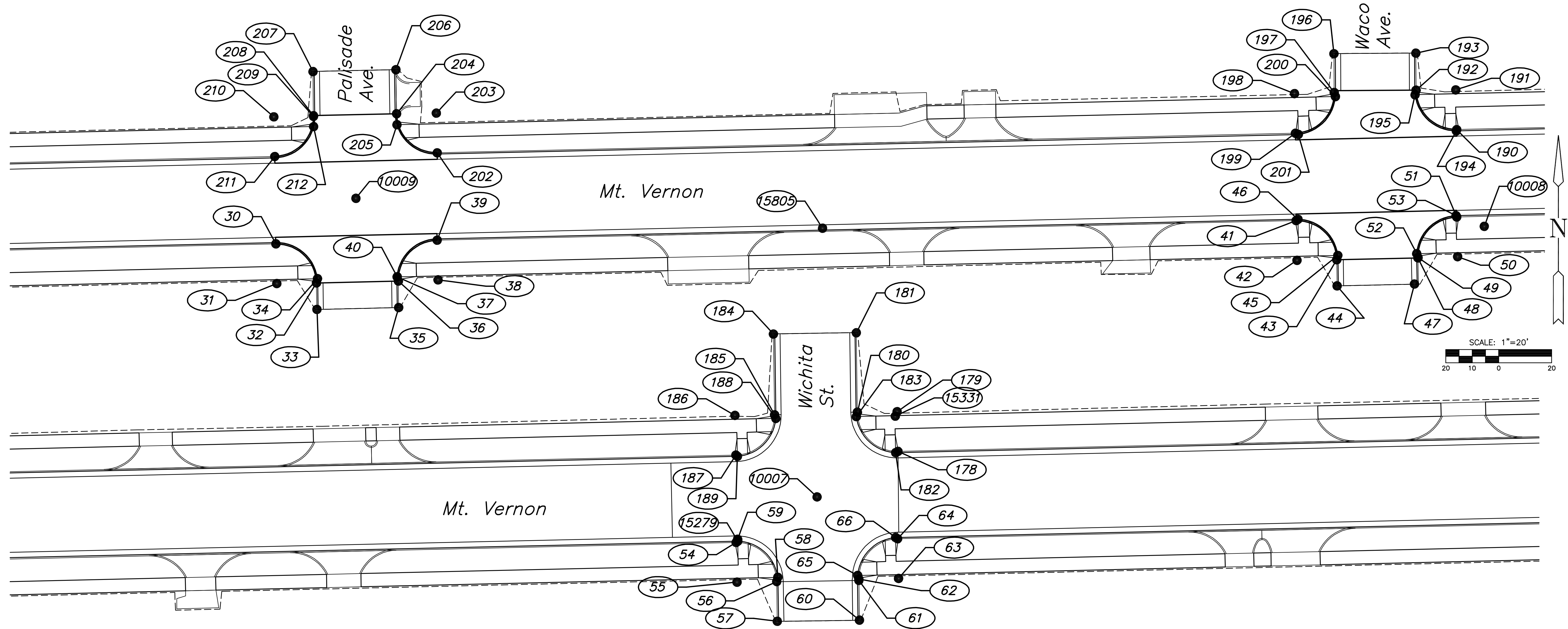


**MT VERNON STREET AND
DRAINAGE IMPROVEMENTS
FROM GREENWAY TO BROADWAY**



POINT TABLE					
POINT NUMBER	STATION	OFFSET	NORTHING	EASTING	DESC
30			1675179.6977	1647354.9782	PC
31			1675164.7017	1647355.3243	RADI
32			1675164.9465	1647370.3223	PT
33			1675154.9478	1647370.4855	BC
34			1675166.5572	1647370.7128	RAMP
35			1675155.6563	1647401.3892	BC
36			1675165.6561	1647401.2762	BC
37			1675165.9295	1647401.2731	PC
38			1675166.0989	1647416.2722	RADI
39			1675181.0951	1647415.9307	PT
40			1675167.2473	1647400.8148	RAMP
41			1675188.4883	1647740.6029	PC
42			1675173.4922	1647740.9444	RADI
43			1675173.7023	1647755.9429	PT
44			1675163.8343	1647756.0812	BC
45			1675175.3430	1647756.3335	RAMP
46			1675188.9881	1647741.3013	RAMP
47			1675164.5348	1647786.8432	BC
48			1675174.4013	1647786.6390	BC
49			1675174.5637	1647786.6356	PC
50			1675174.8741	1647801.6324	RADI
51			1675189.8703	1647801.2909	PT
52			1675176.0225	1647786.1750	RAMP
53			1675190.3626	1647801.0351	RAMP
54			1675196.6892	1648100.7420	PC
55			1675181.6931	1648101.0835	RADI
56			1675181.9019	1648116.0821	PT
57			1675166.9040	1648116.2909	BC
58			1675183.5439	1648116.4726	RAMP
59			1675197.1910	1648101.3394	RAMP

POINT TABLE					
POINT NUMBER	STATION	OFFSET	NORTHING	EASTING	DESC
60			1675167.3289	1648147.3310	BC
61			1675182.3342	1648147.1256	BC
62			1675182.8855	1648147.1181	PC
63			1675183.0908	1648162.1167	RADI
64			1675198.0868	1648161.7712	PT
65			1675184.2351	1648146.6590	RAMP
66			1675198.5514	1648161.0125	RAMP
178			1675231.0987	1648161.9057	PC
179			1675246.0947	1648161.5603	RADI
180			1675245.8956	1648146.5616	PT
181			1675275.8973	1648146.1634	BC
182			1675230.6039	1648161.0256	RAMP
183			1675244.2398	1648146.1717	RAMP
184			1675275.4267	1648114.8208	BC
185			1675244.9163	1648115.2789	PC
186			1675244.6911	1648100.2806	RADI
187			1675229.6950	1648100.6221	PT
188			1675243.5427	1648115.7380	RAMP
189			1675229.2200	1648101.2266	RAMP
190			1675222.8786	1647801.2823	PC
191			1675237.8747	1647800.9408	RADI
192			1675237.7713	1647785.9412	PT
193			1675251.7609	1647785.8447	BC
194			1675222.3758	1647801.1239	RAMP
195			1675236.0239	1647785.5517	RAMP
196			1675251.5474	1647754.8972	BC
197			1675236.8952	1647754.9832	PC
198			1675236.4866	1647739.9834	RADI
199			1675221.4905	1647740.3249	PT
200			1675235.3382	1647755.4408	RAMP

POINT TABLE					
POINT NUMBER	STATION	OFFSET	NORTHING	EASTING	DESC
201			1675221.0531	1647741.4168	RAMP
202			1675214.1040	1647415.9497	PC
203			1675229.1001	1647415.6082	RADI
204			1675228.8571	1647400.6102	PT
205			1675224.7240	1647400.7388	RAMP
206			1675245.5083	1647400.3404	BC
207			1675244.7899	1647368.9960	BC
208			1675228.1385	1647369.1897	BC
209			1675227.8668	1647369.1928	PC
210			1675227.6923	1647354.1938	RADI
211			1675212.6963	1647354.5399	PT
212			1675223.9992	1647369.2474	RAMP
10007			1675213.8900	1648131.3300	SD 3/4"PIPE
10008			1675186.3200	1647811.7000	SDMD
10009			1675196.9000	1647385.2200	SD 1/2"BAR
15279			1675197.8980	1648101.3140	BM 6
15331			1675244.4130	1648160.9040	+CUT
15658			1675353.4360	1647784.5960	BM 5
15805			1675185.6070	1647561.6010	BM 4

PLOTTED: Tuesday, May 27, 2008 @ 04:28PM

J:\CIVIL\05620\DWG\PAV\05620-BUBBLEPAVZ.DWG

**PAVING
BUBBLE MAP**
SHEET TITLE 472-84289
448-90385
468-84514
PROJECT NUMBER

JRA
DESIGN BY
JSB
DRAWN BY
JRA
CHECKED BY

ISSUED
May 27, 2008
REVISED

SHEET NO.
13 of 120