

**MT VERNON STREET AND  
DRAINAGE IMPROVEMENTS  
FROM GREENWAY TO BROADWAY**

**Storm Line 1  
Sta. 8+23.79  
to  
Sta. 13+00**  
SHEET TITLE 472-84289  
448-90385  
468-84514  
PROJECT NUMBER

DESIGN BY JRA  
DRAWN BY JSB  
CHECKED BY JRA

ISSUED May 27, 2008  
REVISED

SHEET NO.  
**26 of 120**

Sta. 8+23.79, Line 1=  
Const. Cast-In-Place End Section  
with 80 S.Y. Light Stone Riprap.  
See Sh. No. 45

Sta. 9+96.79, Line 1  
@ Sta. 11+91.78, 5.50' Rt.  
Transition from 9'x4' RCB  
to 6'x6' RCB

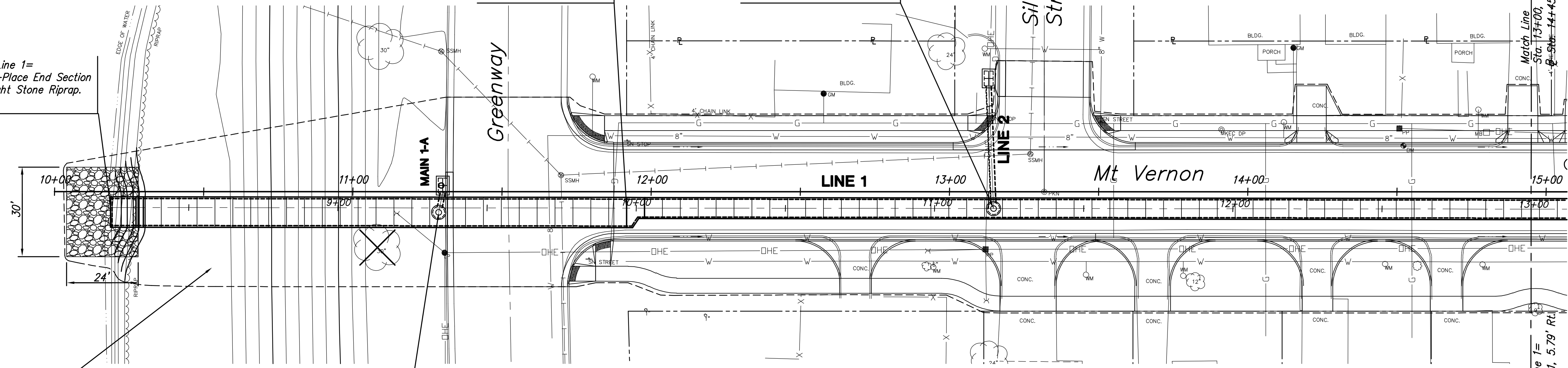
Sta. 11+19.79, Line 1=  
Sta. 10+00.00, Line 2  
@ Sta. 13+14.79, 5.62' Rt.  
Const. Std. Manhole (Type P)  
Stack Manhole on 6'x6' RCB  
MH Top=100.92  
Dia.=4'-0"

Match Line  
Sta. 13+00, Line 1=  
@ Sta. 14+45.01, 5.79' Rt.

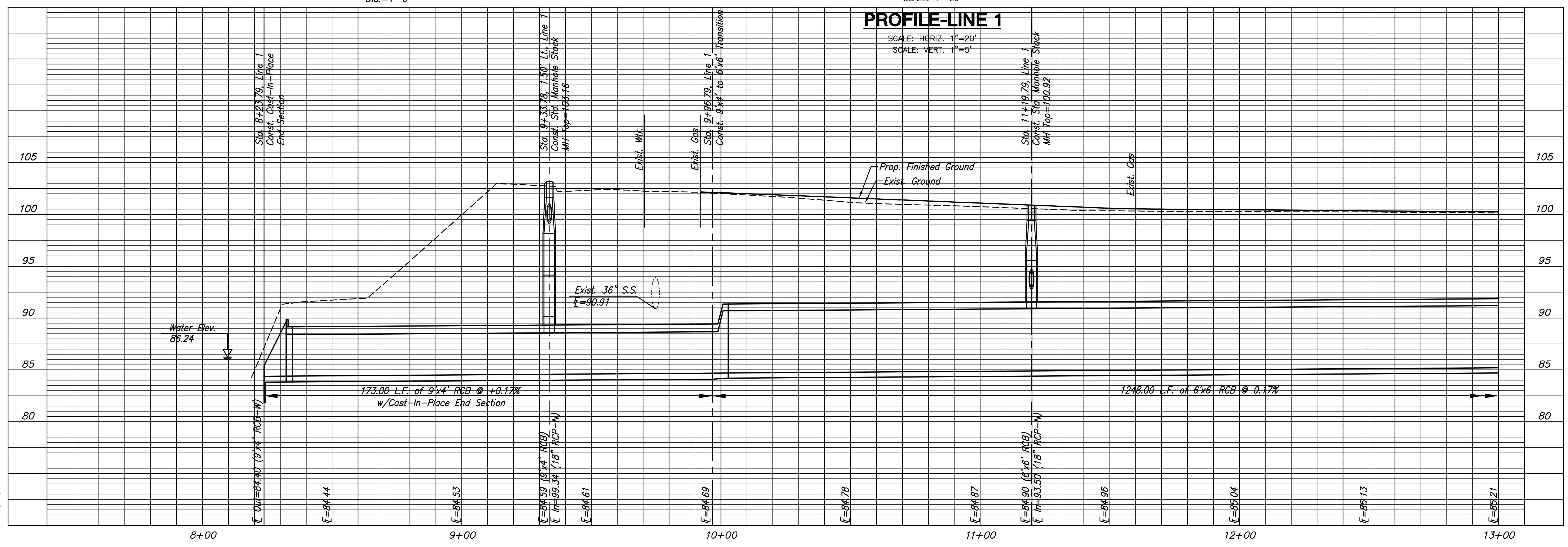
Match Line  
Sta. 13+00, Line 1=  
@ Sta. 14+45.01, 5.79' Rt.

Restore disturbed areas within the  
River Bank as outlined on sheet 2.

Sta. 9+33.78, 1.50' Lt., Line 1=  
Sta. 10+00.00, Line 1-A  
@ Sta. 11+28.79, 6.93' Rt.  
Const. Std. Manhole (Type P)  
Stack Manhole on 9'x4' RCB  
MH Top=103.16  
Dia.=4'-0"



**PLAN-LINE 1**  
SCALE: 1"=20'



**PROFILE-LINE 1**  
SCALE: HORIZ. 1"=20'  
SCALE: VERT. 1"=5'

PLOTTED: Tuesday, May 27, 2008 @ 04:31PM  
J:\CIVIL\05620\DWG\SW\05620-01.DWG