

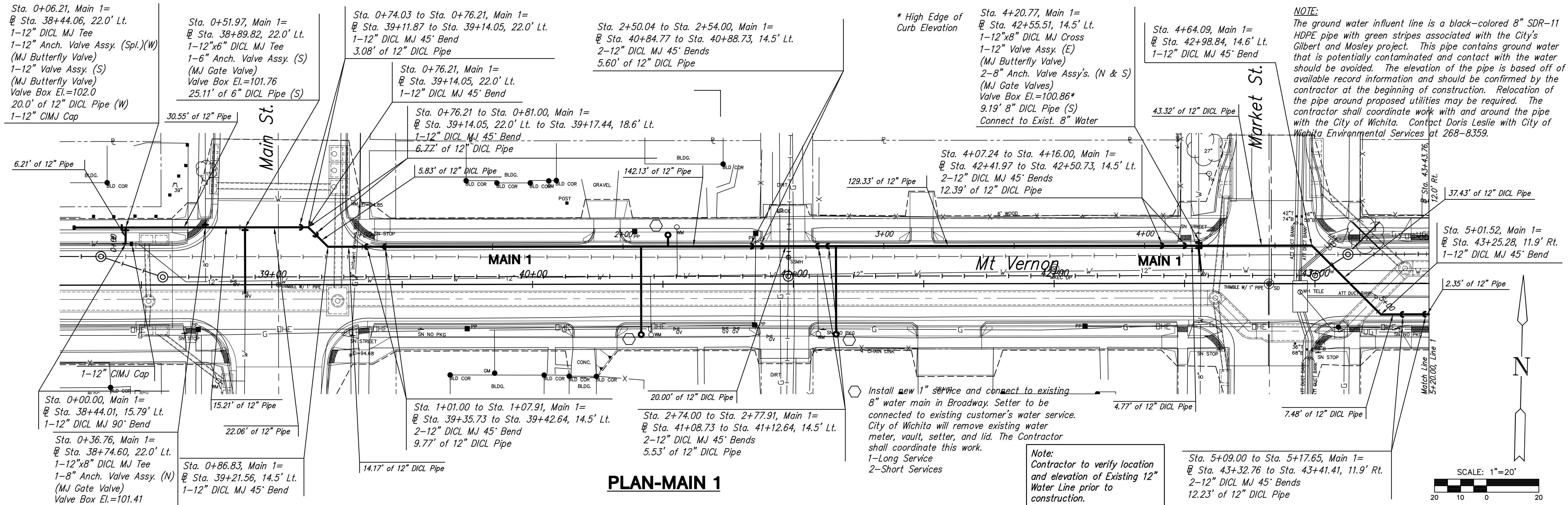
**MT VERNON STREET AND
DRAINAGE IMPROVEMENTS
FROM GREENWAY TO BROADWAY**

**Water Main 1
Sta. 0+00
to
Sta. 5+20**
SHEET TITLE 472-84289
448-90385
468-84514
PROJECT NUMBER

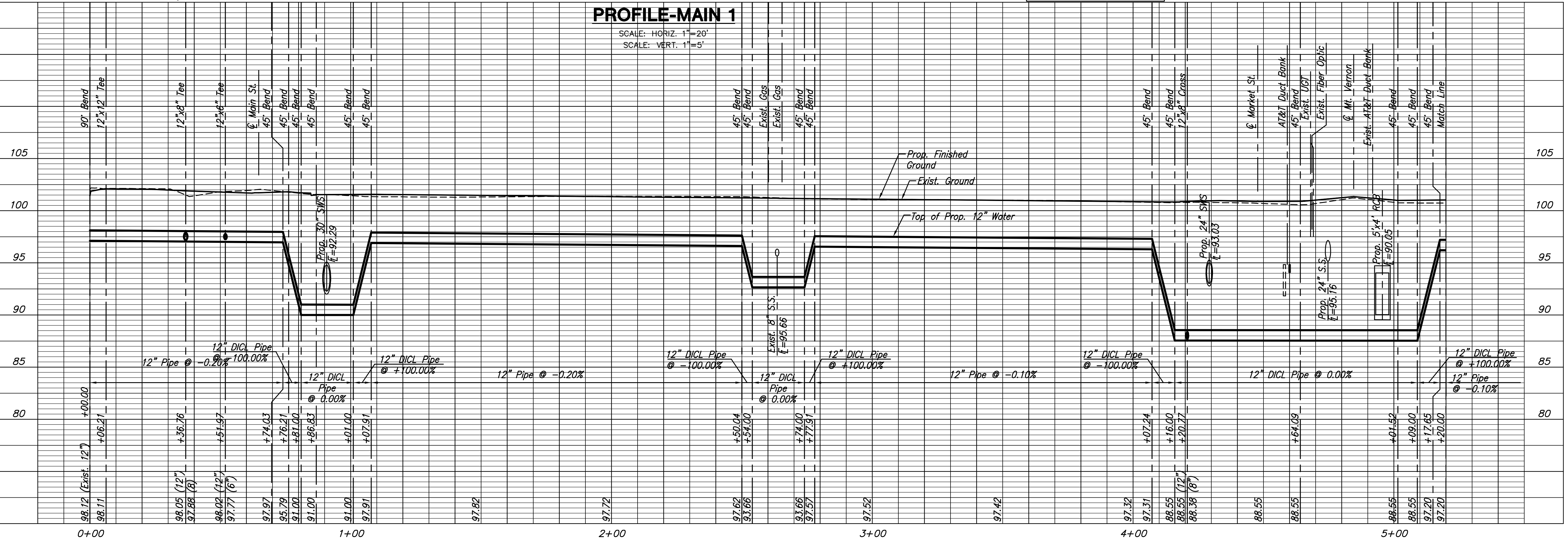
DESIGN BY JRA
DRAWN BY JSB
CHECKED BY JRA

ISSUED May 27, 2008
REVISED

SHEET NO.
62 of 120



PLAN-MAIN 1



PROFILE-MAIN 1

PLOT DATE: Thursday, May 27, 2008 @ 04:35PM

J:\CIVIL\05620\DWG\WTR\05620-C1.DWG

Sta. 0+06.21, Main 1=
@ Sta. 38+44.06, 22.0' Lt.
1-12" DI CL MJ Tee
1-12" Anch. Valve Assy. (Spl.) (W)
(MJ Butterfly Valve)
1-12" Valve Assy. (S)
(MJ Butterfly Valve)
Valve Box El.=102.0
20.0' of 12" DI CL Pipe (W)
1-12" CMJ Cap

Sta. 0+51.97, Main 1=
@ Sta. 38+89.82, 22.0' Lt.
1-12"x6" DI CL MJ Tee
1-6" Anch. Valve Assy. (S)
(MJ Gate Valve)
Valve Box El.=101.76
25.11' of 6" DI CL Pipe (S)

Sta. 0+74.03 to Sta. 0+76.21, Main 1=
@ Sta. 39+11.87 to Sta. 39+14.05, 22.0' Lt.
1-12" DI CL MJ 45° Bend
3.08' of 12" DI CL Pipe

Sta. 2+50.04 to Sta. 2+54.00, Main 1=
@ Sta. 40+84.77 to Sta. 40+88.73, 14.5' Lt.
2-12" DI CL MJ 45° Bends
5.60' of 12" DI CL Pipe

* High Edge of
Curb Elevation
Sta. 4+20.77, Main 1=
@ Sta. 42+55.51, 14.5' Lt.
1-12"x8" DI CL MJ Cross
1-12" Valve Assy. (E)
(MJ Butterfly Valve)
2-8" Anch. Valve Assy's. (N & S)
(MJ Gate Valves)
Valve Box El.=100.86*
9.19' 8" DI CL Pipe (S)
Connect to Exist. 8" Water

Sta. 4+64.09, Main 1=
@ Sta. 42+98.84, 14.6' Lt.
1-12" DI CL MJ 45° Bend

NOTE:
The ground water influent line is a black-colored 8" SDR-11 HDPE pipe with green stripes associated with the City's Gilbert and Mosley project. This pipe contains ground water that is potentially contaminated and contact with the water should be avoided. The elevation of the pipe is based off of available record information and should be confirmed by the contractor at the beginning of construction. Relocation of the pipe around proposed utilities may be required. The contractor shall coordinate work with and around the pipe with the City of Wichita. Contact Doris Leslie with City of Wichita Environmental Services at 268-8359.

Install new 1" service and connect to existing 8" water main in Broadway. Setter to be connected to existing customer's water service. City of Wichita will remove existing water meter, vault, setter, and lid. The Contractor shall coordinate this work.
1-Long Service
2-Short Services

Note:
Contractor to verify location and elevation of Existing 12" Water Line prior to construction.

Sta. 5+09.00 to Sta. 5+17.65, Main 1=
@ Sta. 43+32.76 to Sta. 43+41.41, 11.9' Rt.
2-12" DI CL MJ 45° Bends
12.23' of 12" DI CL Pipe

