

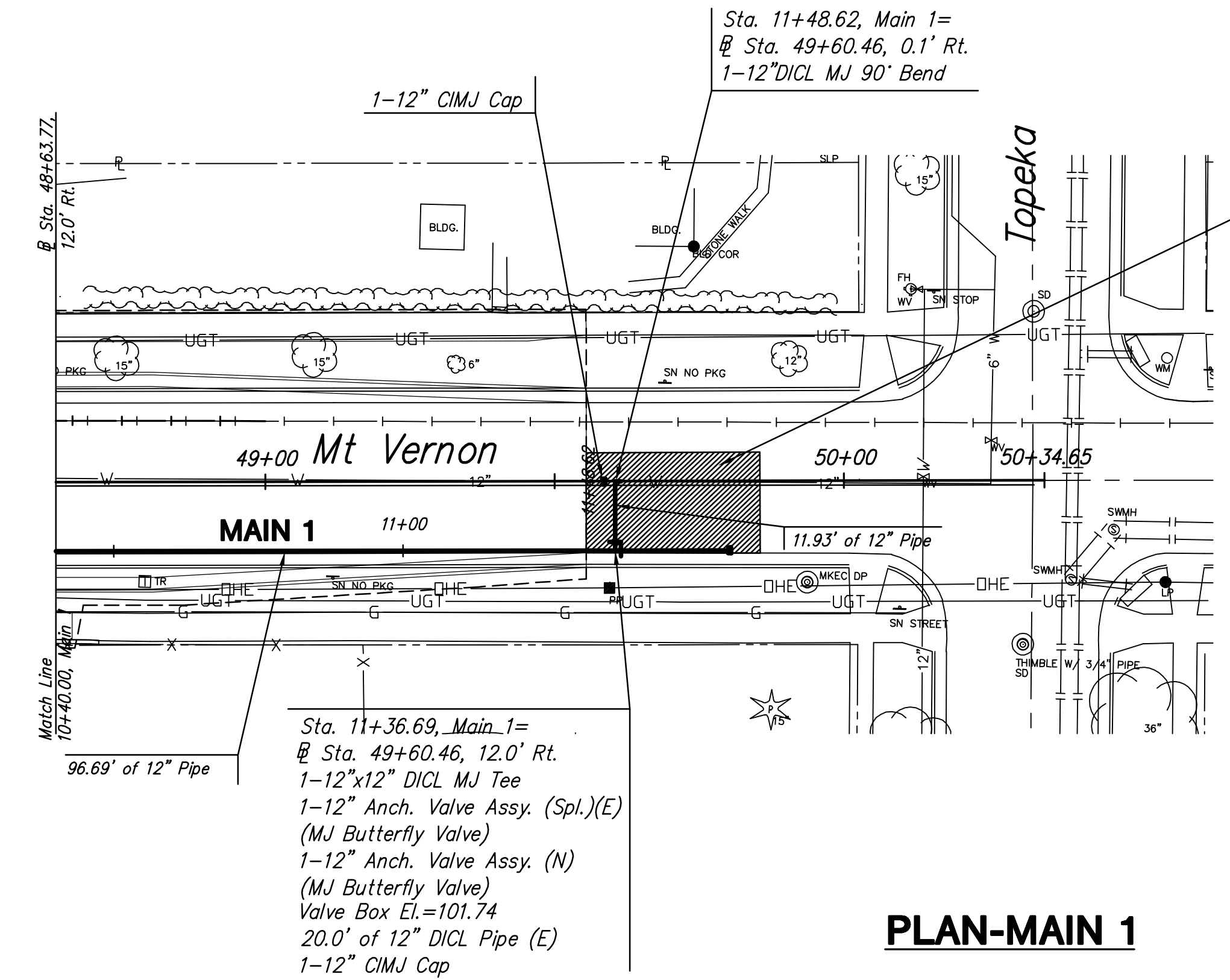
**MT VERNON STREET AND
DRAINAGE IMPROVEMENTS
FROM GREENWAY TO BROADWAY**

**Water Main 1
Sta. 10+40
to
Sta. 11+48.62**
SHEET TITLE 472-84289
448-90385
468-84514
PROJECT NUMBER

DESIGN BY JRA
DRAWN BY JSB
CHECKED BY JRA

ISSUED May 27, 2008
REVISED

SHEET NO.
64 of 120

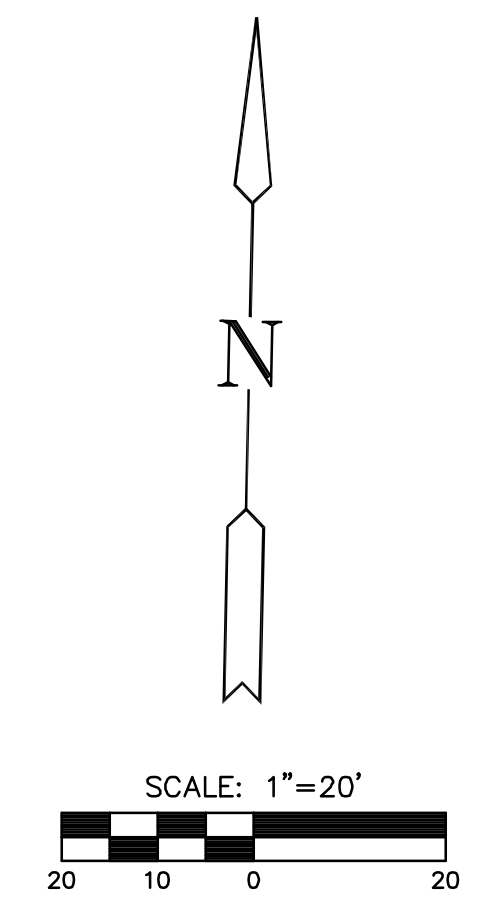


Remove and Replace 58.0 S.Y. of Pavement and 30.0 L.F. of Curb and Gutter to Match Existing. See Perm. Patch Detail on Sht. 61

Sta. 11+36.69, Main_1=
@ Sta. 49+60.46, 12.0' Rt.
1-12"x12" DICL MJ Tee
1-12" Anch. Valve Assy. (Spl.)(E)
(MJ Butterfly Valve)
1-12" Anch. Valve Assy. (N)
(MJ Butterfly Valve)
Valve Box El.=101.74
20.0' of 12" DICL Pipe (E)
1-12" CIMJ Cap

PLAN-MAIN 1

Note:
Contractor to verify location and elevation of Existing 12" Water Line prior to construction.



PROFILE-MAIN 1

SCALE: HORIZ. 1"=20'
SCALE: VERT. 1"=5'

