

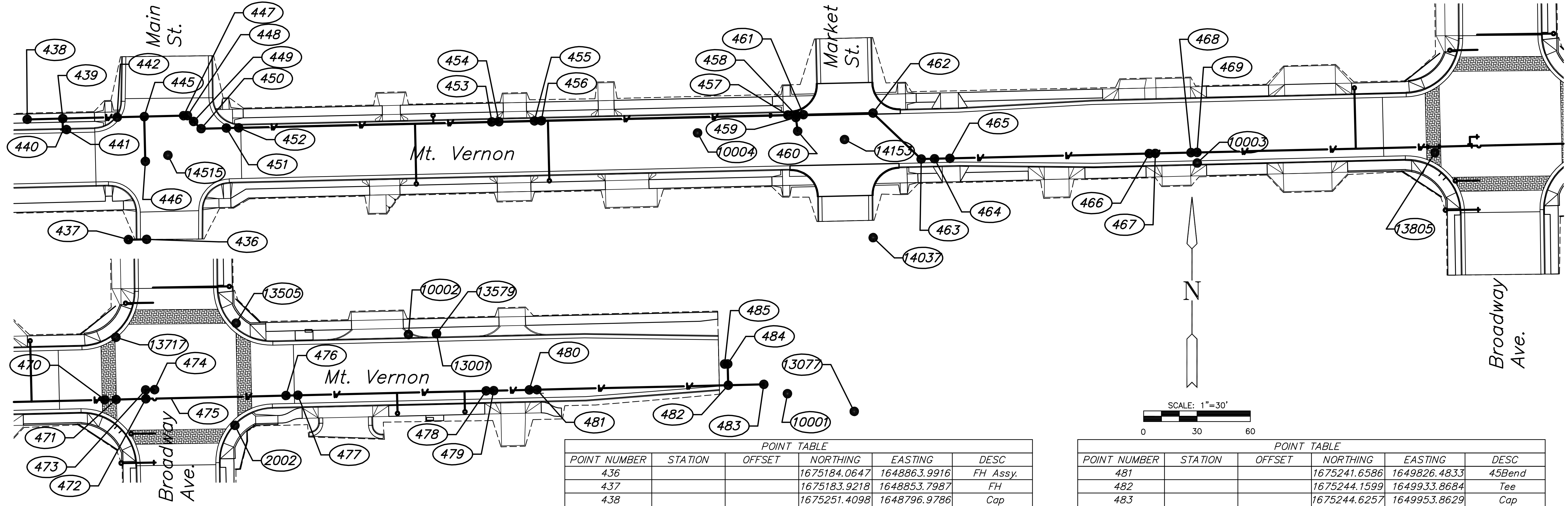
**MT VERNON STREET AND
DRAINAGE IMPROVEMENTS
FROM GREENWAY TO BROADWAY**

**WATER
BUBBLE MAP**
SHEET TITLE 472-84289
448-90385
468-84514
PROJECT NUMBER

DESIGN BY JRA
DRAWN BY JSB
CHECKED BY JRA

ISSUED May 27, 2008
REVISED

SHEET NO.
69 of 120



POINT NUMBER	STATION	OFFSET	NORTHING	EASTING	DESC
2000			1674561.8411	1649665.5065	SD
2001			1674611.9171	1649664.6144	SD
2002			1675221.6323	1649656.9505	SD
2004			1675918.7969	1649648.9996	SD
3004			1675295.7597	1650385.2486	SD
10001			1675239.4100	1649967.1500	SDMD
10002			1675272.6400	1649754.3800	SDMD
10003			1675226.9200	1649453.8000	SDMD
10004			1675243.8000	1649173.3300	+CUT
10005			1675246.7600	1648772.5600	SDMD
10006			1675243.6700	1648456.3500	SDMD
10007			1675213.8900	1648131.3300	SD 3/4"PIPE
10008			1675186.3200	1647811.7000	SDMD
10009			1675196.9000	1647385.2200	SD 1/2"BAR
10010			1675202.5100	1646756.8200	SDMD
10011			1675196.8600	1646364.7500	SDMD
10012			1675106.9500	1646084.1000	SDMD
10021			1675247.1090	1648772.6290	SDMD
11000			1675192.7800	1646425.8490	BM 2
13001			1675273.0940	1649770.0810	BM 11
13077			1675229.4540	1650004.6210	THIMBLE 3/4"PIPE
13505			1675278.9990	1649657.6180	SD 1"PIPE
13579			1675273.0830	1649770.1340	BM 11
13717			1675271.0640	1649590.1160	+CUT
13805			1675232.6910	1649587.2410	BM 10
14037			1675185.0100	1649271.8990	BM 9
14153			1675240.0920	1649255.8160	THIMBLE 1"PIPE
14515			1675231.2720	1648876.0180	THIMBLE 1"PIPE
14657			1675211.6230	1648693.3180	BM 8
14849			1675222.2990	1648496.3970	THIMBLE 1/2"PIPE
14850			1675132.7490	1648517.6190	BM 7
15279			1675197.8980	1648101.3140	BM 6
15331			1675244.4130	1648160.9040	+CUT
15658			1675353.4360	1647784.5960	BM 5
15805			1675185.6070	1647561.6010	BM 4
16206			1675171.9960	1647066.0120	BM 3
16358			1675188.5980	1647025.4880	SD 3/4"PIPE
16767			1675182.5530	1646665.5810	SPIKE
16921			1675193.0110	1646425.7320	BM 2
17229			1675320.5930	1646103.4710	BM 1

POINT NUMBER	STATION	OFFSET	NORTHING	EASTING	DESC
436			1675184.0647	1648863.9916	FH Assy.
437			1675183.9218	1648853.7987	FH
438			1675251.4098	1648796.9786	Cap
439			1675251.8823	1648816.9730	Tee
440			1675245.6727	1648817.0689	90Bend
441			1675245.7036	1648819.0687	Cap
442			1675252.6041	1648847.5103	Tee
443			1675263.5998	1648847.2527	FH Assy.
444			1675264.9253	1648903.8237	FH
445			1675252.9637	1648862.7216	Tee
446			1675227.8570	1648863.3150	Wtr Valve
447			1675253.4849	1648884.7741	45Bend
448			1675253.5364	1648886.9534	45Bend
449			1675250.2304	1648890.4196	45Bend
450			1675246.2081	1648894.6366	45Bend
451			1675246.5371	1648908.8027	45Bend
452			1675246.6976	1648915.7109	45Bend
453			1675249.9976	1649057.8045	45Bend
454			1675250.0896	1649061.7635	45Bend
455			1675250.5540	1649081.7581	45Bend
456			1675250.6447	1649085.6670	45Bend
457			1675253.8570	1649223.9797	45Bend
458			1675253.9618	1649228.4913	Cross
459			1675252.4622	1649228.5256	Bend
460			1675244.7890	1649229.5138	Wtr Valve
461			1675254.0599	1649232.7174	45Bend
462			1675254.9676	1649271.8007	45Bend
463			1675229.1246	1649298.8727	45Bend
464			1675229.3044	1649306.3500	45Bend
465			1675229.5124	1649314.9975	45Bend
466			1675232.2034	1649426.8851	45Bend
467			1675232.2859	1649430.3141	45Bend
468			1675232.7668	1649450.3084	45Bend
469			1675232.8485	1649453.7074	45Bend
470			1675235.9794	1649583.8797	45Bend
471			1675236.1330	1649590.2679	45Bend
472			1675236.5339	1649606.9374	Tee
473			1675241.5325	1649606.8171	90Bend
474			1675241.6537	1649611.8587	Tee
475			1675236.8747	1649621.1048	Bend
476			1675238.3770	1649685.6015	45Bend
477			1675238.5333	1649692.3097	45Bend
478			1675240.9952	1649798.0010	45Bend
479			1675241.0932	1649802.2098	45Bend
480			1675241.5589	1649822.2044	45Bend

POINT NUMBER	STATION	OFFSET	NORTHING	EASTING	DESC
481			1675241.6586	1649826.4833	45Bend
482			1675244.1599	1649933.8684	Tee
483			1675244.6257	1649953.8629	Cap
484			1675256.0805	1649933.5907	90Bend
485			1675256.0524	1649931.8377	Cap

PLOTTED: Tuesday, May 27, 2008 @ 04:58PM

J:\CIVIL\05620\DWG\WTR\05620-WTR\BUBBLEMAP1.DWG