

**MT VERNON STREET AND
DRAINAGE IMPROVEMENTS
FROM GREENWAY TO BROADWAY**

**SANITARY
SEWER
BUBBLE MAP**

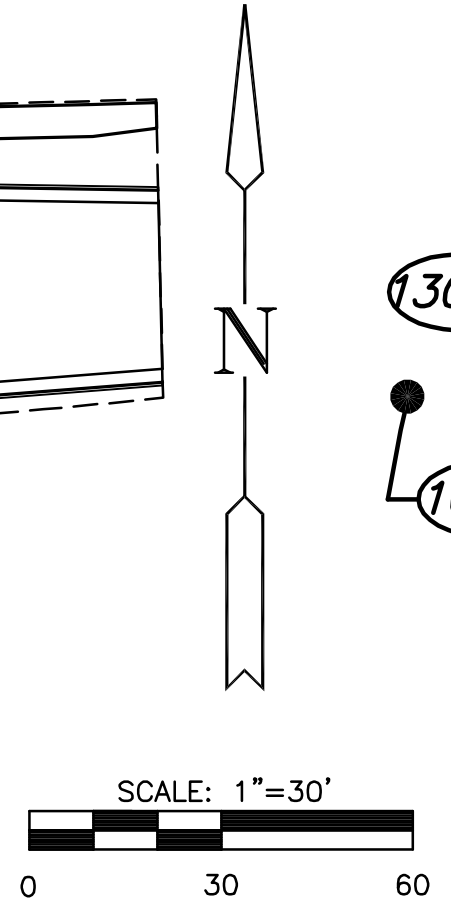
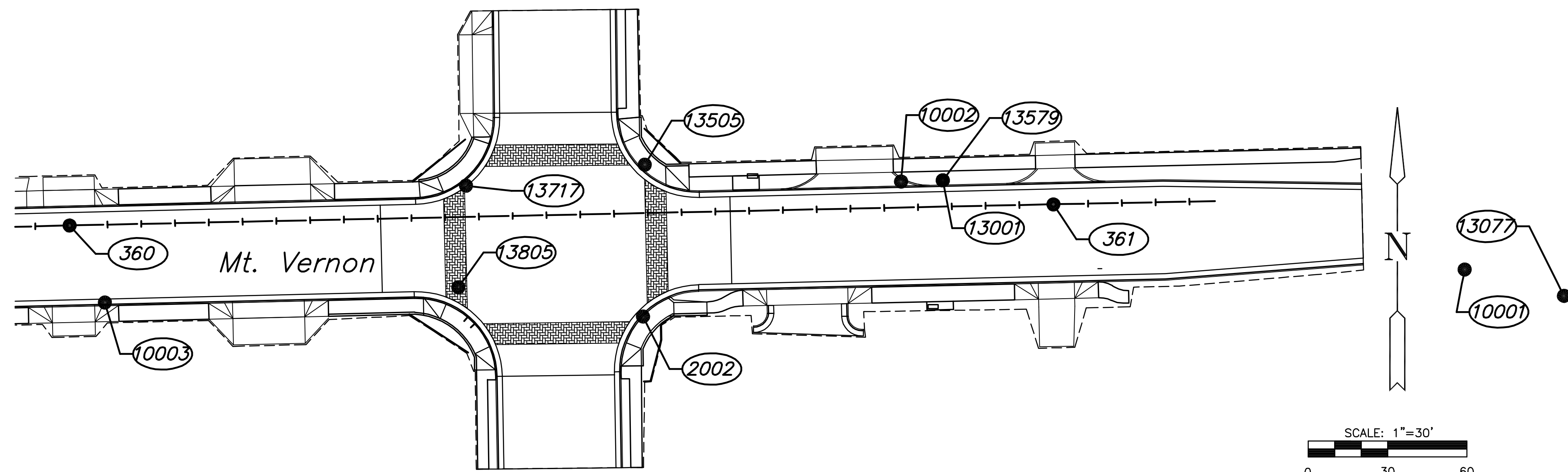
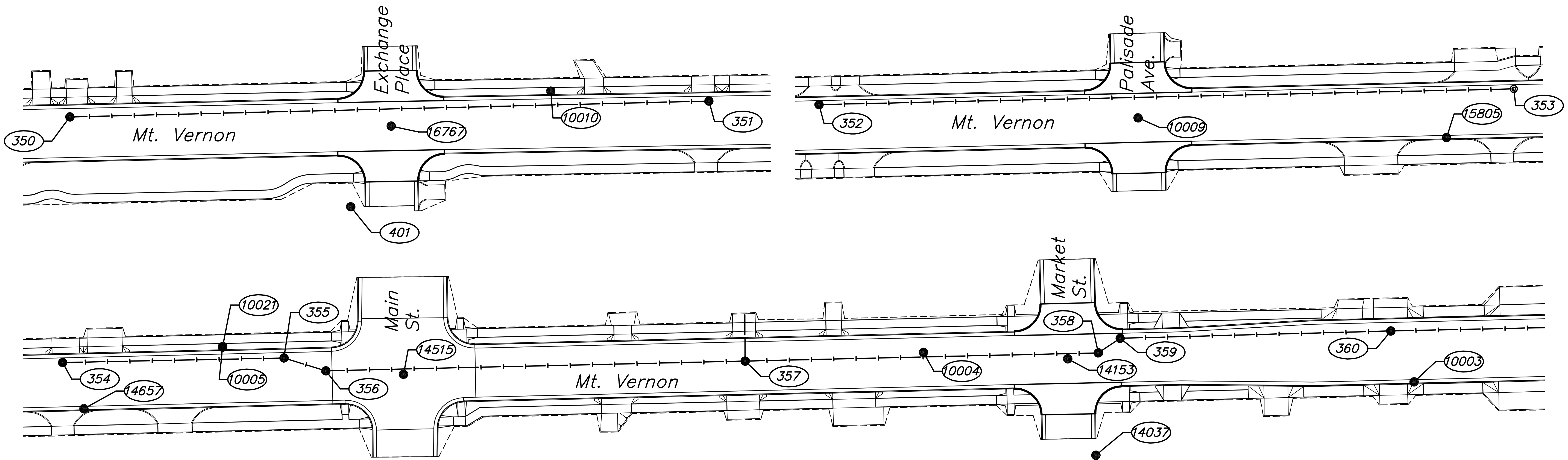
SHEET TITLE 472-84289
448-90385
468-84514
PROJECT NUMBER

DESIGN BY JRA
DRAWN BY JSB
CHECKED BY JRA

ISSUED
May 27, 2008

REVISED

SHEET NO.
76 of 120



| POINT TABLE | | | | | |
|--------------|---------|--------|--------------|--------------|---------|
| POINT NUMBER | STATION | OFFSET | NORTHING | EASTING | DESC |
| 350 | | | 1675187.7732 | 1646481.8864 | San. MH |
| 351 | | | 1675196.8584 | 1646847.2139 | San. MH |
| 352 | | | 1675204.4621 | 1647202.8217 | San. MH |
| 353 | | | 1675213.4543 | 1647600.0108 | San. MH |
| 354 | | | 1675237.9685 | 1648681.1171 | San. MH |
| 355 | | | 1675240.5921 | 1648807.7056 | San. MH |
| 356 | | | 1675233.2410 | 1648831.6004 | San. MH |
| 357 | | | 1675238.8095 | 1649071.3639 | San. MH |
| 358 | | | 1675243.4996 | 1649273.3095 | San. MH |
| 359 | | | 1675251.8428 | 1649285.7751 | San. MH |
| 360 | | | 1675256.0187 | 1649440.5095 | San. MH |
| 361 | | | 1675264.0045 | 1649811.8756 | San. MH |

| POINT TABLE | | | | | |
|--------------|---------|--------|--------------|--------------|------------------|
| POINT NUMBER | STATION | OFFSET | NORTHING | EASTING | DESC |
| 2000 | | | 1674561.8411 | 1649665.5065 | SD |
| 2001 | | | 1674611.9171 | 1649664.6144 | SD |
| 2002 | | | 1675221.6323 | 1649656.9505 | SD |
| 2004 | | | 1675918.7969 | 1649648.9996 | SD |
| 3004 | | | 1675295.7597 | 1650385.2486 | SD |
| 10001 | | | 1675239.4100 | 1649967.1500 | SDMD |
| 10002 | | | 1675272.6400 | 1649754.3800 | SDMD |
| 10003 | | | 1675226.9200 | 1649453.8000 | SDMD |
| 10004 | | | 1675243.8000 | 1649173.3300 | +CUT |
| 10005 | | | 1675246.7600 | 1648772.5600 | SDMD |
| 10006 | | | 1675243.6700 | 1648456.3500 | SDMD |
| 10007 | | | 1675213.8900 | 1648131.3300 | SD 3/4"PIPE |
| 10008 | | | 1675186.3200 | 1647811.7000 | SDMD |
| 10009 | | | 1675196.9000 | 1647385.2200 | SD 1/2"BAR |
| 10010 | | | 1675202.5100 | 1646756.8200 | SDMD |
| 10011 | | | 1675196.8600 | 1646364.7500 | SDMD |
| 10012 | | | 1675106.9500 | 1646084.1000 | SDMD |
| 10021 | | | 1675247.1090 | 1648772.6290 | SDMD |
| 11000 | | | 1675192.7800 | 1646425.8490 | BM 2 |
| 13001 | | | 1675273.0940 | 1649770.0810 | BM 11 |
| 13077 | | | 1675229.4540 | 1650004.6210 | THIMBLE 3/4"PIPE |
| 13505 | | | 1675278.9990 | 1649657.6180 | SD 1"PIPE |
| 13579 | | | 1675273.0830 | 1649770.1340 | BM 11 |
| 13717 | | | 1675271.0640 | 1649590.1160 | +CUT |
| 13805 | | | 1675232.6910 | 1649587.2410 | BM 10 |
| 14037 | | | 1675185.0100 | 1649271.8990 | BM 9 |
| 14153 | | | 1675240.0920 | 1649255.8160 | THIMBLE 1"PIPE |
| 14515 | | | 1675231.2720 | 1648876.0180 | THIMBLE 1"PIPE |
| 14657 | | | 1675211.6230 | 1648693.3180 | BM 8 |
| 14849 | | | 1675222.2990 | 1648496.3970 | THIMBLE 1/2"PIPE |
| 14850 | | | 1675132.7490 | 1648517.6190 | BM 7 |
| 15279 | | | 1675197.8980 | 1648101.3140 | BM 6 |
| 15331 | | | 1675244.4130 | 1648160.9040 | +CUT |
| 15658 | | | 1675353.4360 | 1647784.5960 | BM 5 |
| 15805 | | | 1675185.6070 | 1647561.6010 | BM 4 |
| 16206 | | | 1675171.9960 | 1647066.0120 | BM 3 |
| 16358 | | | 1675188.5980 | 1647025.4880 | SD 3/4"PIPE |
| 16767 | | | 1675182.5530 | 1646665.5810 | SPIKE |
| 16921 | | | 1675193.0110 | 1646425.7320 | BM 2 |
| 17229 | | | 1675320.5930 | 1646103.4710 | BM 1 |

PLOTTED: Tuesday, May 27, 2008 @ 04:37PM

J:\CIVIL\05620\DWG\SAN\BUBBLESAN1.DWG