

PHASING	HANDLING OF TRAFFIC	MAJOR CONSTRUCTION ITEMS	REMARKS
1	Maintain two-way, two-lane traffic on Mt. Vernon at all time. Flagger operations will be permitted for day-time street closures where two-lane, two-way traffic can not be maintained. The contractor shall coordinate necessary lane closures and traffic han	Construct all water line improvements.	Refer to sheet 94 for the appropriate traffic control strategy to implement for the various construction operations being executed. Phase 1 may be eliminated if water line improvements are to be completed during other phases of the work.
2	Mt. Vernon closed between Greenway and Exchange Place. Maintain two-way, two-lane traffic on Greenway. Silver Street intersection closed to thru traffic.	Construct utility improvements between the Arkansas River and Greenway. Construct west half of Greenway intersection.	See sheets 94and 95 for typical traffic control plan and details.
3	Mt. Vernon closed between Greenway and Gold. Maintain two-way, two-lane traffic on Greenway. Silver and Exchange Place intersections closed to thru traffic.	Construct utility improvements between Greenway and Exchange Place. Construct Mt. Vernon between Greenway and Exchange Place. Construct east half of Greenway intersection.	See sheets 94and 95 for typical traffic control plan and details.
4	Mt. Vernon closed between Greenway and Palisade. Maintain two-way, two-lane traffic on Greenway. Silver, Exchange Place and Gold intersections closed to thru traffic.	Construct utility improvements between Exchange Place and Gold. Construct Exchange Place intersection.	See sheets 94and 95 for typical traffic control plan and details.
5	Mt. Vernon closed between Exchange Place and Waco. Gold and Palisade intersections closed to thru traffic. Exchange Place and Waco Streets to remain open to two-way, two-lane traffic.	Construct utility improvements between Gold and Palisade. Construct Mt. Vernon between Exchange Place and Gold. Construct Gold intersection.	See sheets 94and 95 for typical traffic control plan and details.
6	Mt. Vernon closed between Gold and Wichita. Palisade and Waco intersections closed to thru traffic. Gold and Wichita Streets to remain open to two-way, two-lane traffic.	Construct utility improvements between Palisade and Waco. Construct Mt. Vernon between Gold and Palisade. Construct Palisade intersection.	See sheets 94and 95 for typical traffic control plan and details.
7	Mt. Vernon closed between Palisade and Water. Waco and Wichita intersections closed to thru traffic. Palisade and Water Streets to remain open to two-way, two-lane traffic.	Construct utility improvements between Waco and Wichita. Construct Mt. Vernon between Palisade and Waco. Construct Waco Intersection.	See sheets 94and 95 for typical traffic control plan and details.
8	Mt. Vernon closed between Waco and Main. Wichita and Water intersections closed to thru traffic. Waco to remain open to two-way, two-lane traffic. Main Street to remain open to three/two-lane SB traffic.	Construct utility improvements between Wichita and Water. Construct Mt. Vernon between Waco and Wichita. Construct Wichita Street Intersection.	See sheets 94and 95 for typical traffic control plan and details.
9	Mt. Vernon closed between Wichita and Market. Water Street intersection closed to thru traffic. Maintain one-lane SB traffic on Main. Wichita Street to remain open to two-way, two-lane traffic. Market Street to remain open to two-lane NB traffic.	Construct utility improvements between Water and Main. Construct Mt. Vernon between Wichita and Water. Construct Water Street Intersection.	See sheets 94- 96 for typical traffic control plan and details.
10	Mt. Vernon closed between Water and Broadway. Maintain one-lane SB traffic on Main. Maintain one-lane NB traffic on Market. Water Street to remain open to two-way, two-lane traffic. Broadway to remain open to two-way, four lane traffic.	Construct utility improvements between Main and Market. Construct Mt. Vernon between Water and Main. Construct west half of Main Street Intersection.	See sheets 94 and 96 for typical traffic control plan and details. Allow access to Bike Shop off of Mt. Vernon during this phase. At a minimum, one lane of Market shall remain open to traffic at all times. Alternating traffic from side-to-side and temporary pavement may be required.
11	Mt. Vernon closed between Main and Topeka. Maintain one-lane SB traffic on Main. Maintain one-lane NB traffic on Market. Maintain two-way, two-lane traffic on Broadway. Topeka Street to remain open throughout construction.	Construct utility improvements between Market and Broadway. Construct Mt. Vernon between Main and Market. Construct east half of Main Street intersection. Construct west half of Market Street intersection.	See sheets 94 and 96 for typical traffic control plan and details. Maintain access to the Smoke Shop via existing Broadway entrance during times when Mt. Vernon access is unavailable. Maintain access to the Bike Shop via temporary Broadway entrance during times when Mt. Vernon access is unavailable. At a minimum, one lane of Market shall remain open to traffic at all times. Alternating traffic from side-to-side and temporary pavement may be required.
12	Mt. Vernon closed between Market and Topeka. Maintain two-way, two-lane traffic on Broadway. Topeka Street to remain open throughout construction. Maintain one-lane NB traffic on Market.	Construct utility improvements between Broadway and Topeka. Construct Mt. Vernon between Market and Broadway. Construct west half of Broadway intersection.	See sheets 94 and 97 for typical traffic control plan and details. Mt. Vernon east of Topeka to remain open. Staging on Mt. Vernon ahead of utility construction area will not be allowed. Maintain access to the Smoke Shop via existing Broadway entrance during times when Mt. Vernon access is unavailable. Maintain access to the Bike Shop via temporary Broadway entrance during times when Mt. Vernon access is unavailable.
13	Mt. Vernon closed between Broadway and Topeka. Maintain two-way, two-lane traffic on Broadway. Topeka Street to remain open throughout construction.	Construct Mt. Vernon between Broadway and Topeka. Construct east half of Broadway intersection.	See sheets 94 and 97 for typical traffic control plan and details. Mt. Vernon east of Topeka to remain open. Staging on Mt. Vernon ahead of utility construction area will not be allowed. Maintain access to the Bike Shop via temporary Broadway entrance during times when Mt. Vernon access is unavailable.
15	Maintain two-way, two-lane traffic on Mt. Vernon at all time. Flagger operations will be permitted for day-time street closures where two-lane, two-way traffic can not be maintained. The contractor shall coordinate necessary lane closures and traffic han	Construct asphalt surface course over all bituminous pavements and install permanent pavement marking throughout the project.	Surface courses and pavement markings may be installed during phased paving operations provided that surface courses do not receive temporary pavement marking or damage from construction operations.

General Notes

In General, construction shall begin at the west end of the project and proceed eastwardly in conformance with the above construction sequence summary. Major work not constructed as indicated above shall be subject to written approval by the Engineer.

All signs and pavement markings conflicting with construction traffic control shall be covered or removed as directed by the Engineer.

As the various construction activities progress, certain situations may arise that will preclude adhering to the original construction sequence or which, in the opinion of the Contractor, would readily adapt themselves to a more efficient phasing operation. Should this occur, the Contractor may submit to the Engineer an alternative plan for approval.

Contractor shall maintain existing drainage system during construction and address local drainage issues as necessary during construction. Temporary drainage measures will be subsidiary to other items in the contract. Contractor shall provide for drainage in sump areas opened to traffic. Ponded stormwater in sump areas will not be allowed.

Maintain access to all driveways and entrances within the project limits at all times. Driveways 16' wide and wider shall be constructed half at a time with the other half remaining open. Driveways less than 16' may be closed completely during construction.

Contractor shall provide temporary asphalt pavement where necessary to bridge grade differentials between new and existing pavement.

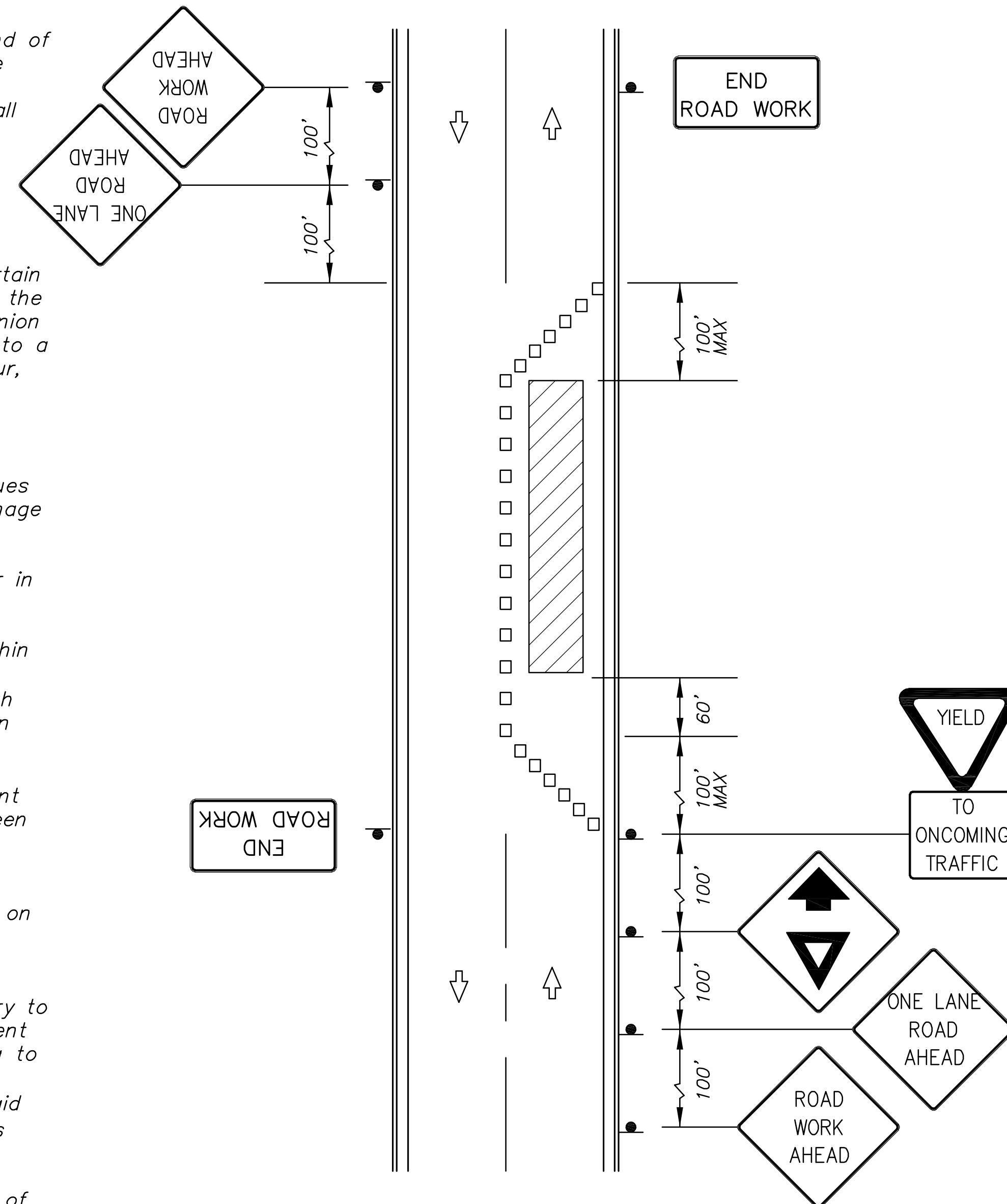
All traffic control signs and devices shall be in conformance with the latest edition of the Manual on Uniform Traffic Control Devices.

Temporary street surfacing on the Greenway, Main, Market and Broadway intersections will be necessary to maintain traffic in instances where existing pavement has been previously removed. Temporary surfacing to be 5" of Commercial Grade Asphalt on Compacted Subgrade. Cost of Temporary Surfacing shall be paid for as "Temporary Asphalt Surfacing". 1,067 S.Y. is anticipated.

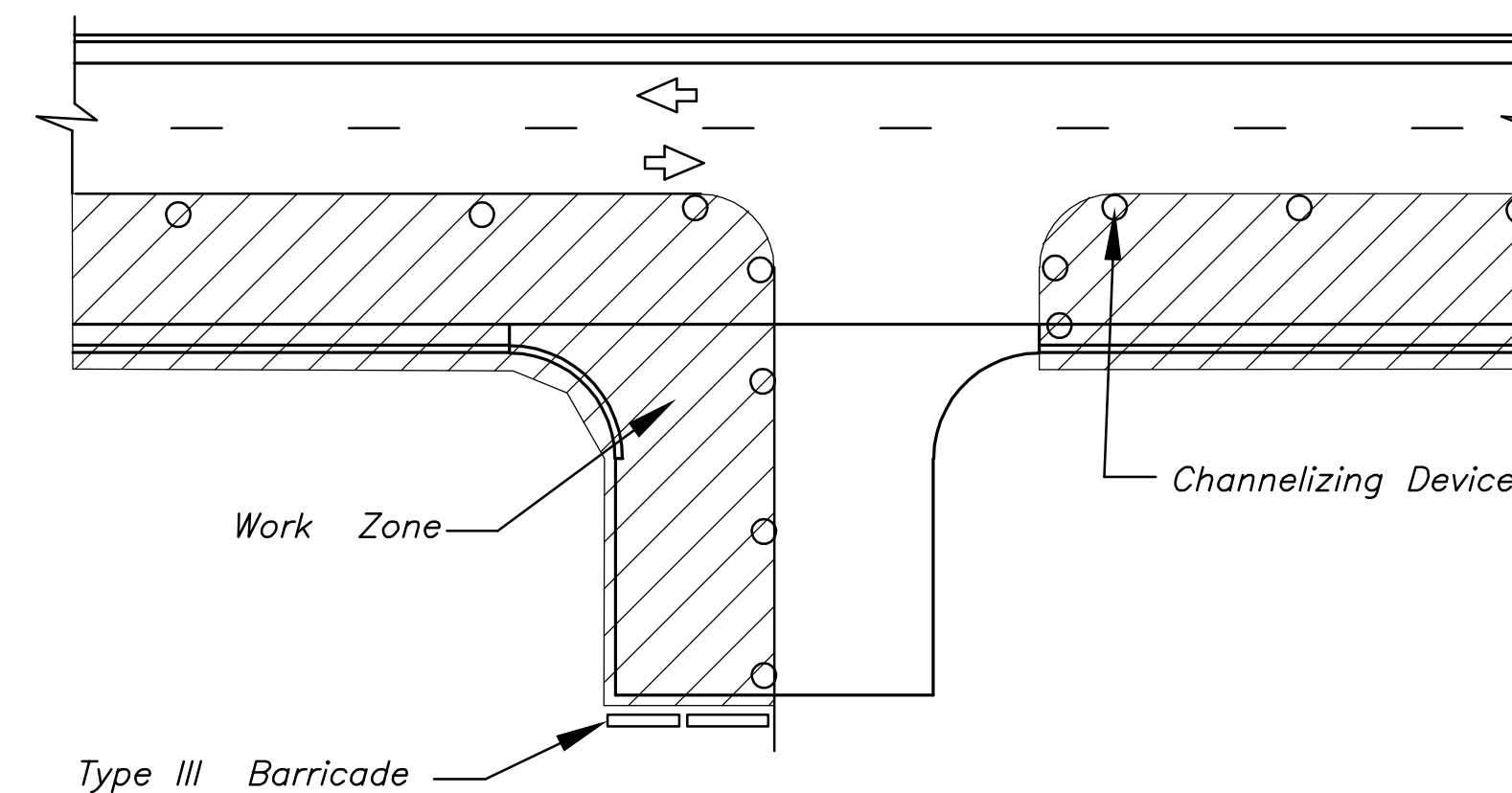
Contractor shall construct a temporary access off of Broadway for the Bike Shop at the appropriate stage in construction. The entrance shall be constructed using AB-3 or other approved material. The entrance shall be 16 feet wide and extend from the existing sidewalk to the edge of pavement on Broadway. The existing curb and gutter shall be removed at the entrance. Work to be Subsidiary to "Temporary Asphalt Surfacing". 22 S.Y. is anticipated.

LEGEND

- ||| Type III Barricades with lights
- Mount On Type III Barricade
- Type B Warning Light
- ↑ One Post Sign
- ↑↑ Two Post Sign
- Traffic Lane
- ▨ Work Area
- Reflectorized Drum
- Tubular Marker
- Vertical Panel
- △ Mount Overhead on Signal Cross-arm



TYPICAL TRAFFIC CONTROL PLAN - PARTIAL ROADWAY ENCROACHMENT ON TWO-LANE ROAD



TYPICAL DRIVEWAY ENTRANCE CONSTRUCTION

Maintain access to businesses at all times. If a single property has multiple entrances, one entrance at a time may be closed for construction.

**MT VERNON STREET AND
DRAINAGE IMPROVEMENTS
FROM GREENWAY TO BROADWAY**

CONSTRUCTION SEQUENCE
SHEET TITLE 472-84289
448-90385
468-84514
PROJECT NUMBER

DESIGN BY JRA
DRAWN BY JSB
CHECKED BY JRA

ISSUED May 27, 2008
REVISED