

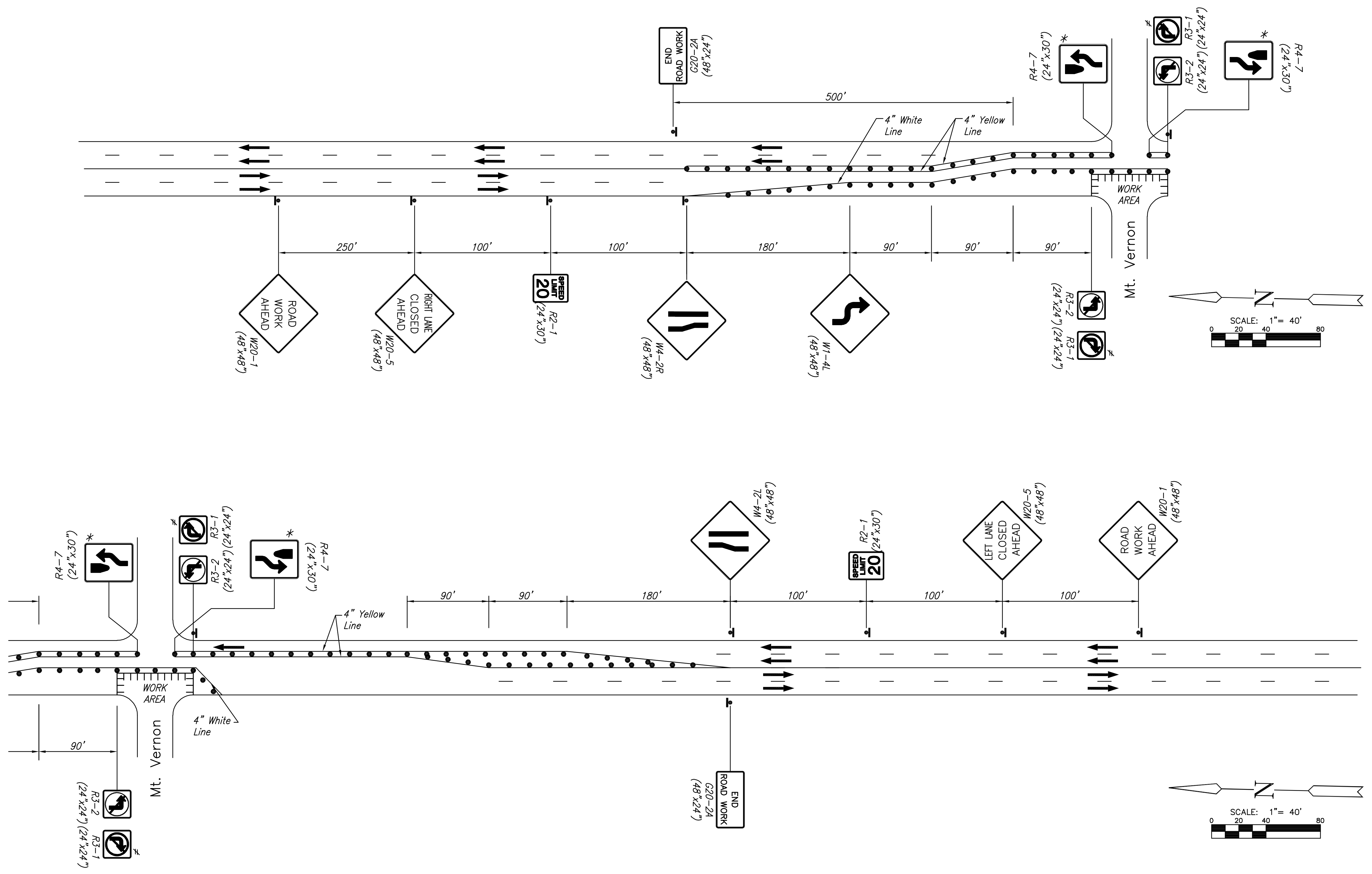
**MT VERNON STREET AND
DRAINAGE IMPROVEMENTS
FROM GREENWAY TO BROADWAY**

TRAFFIC CONTROL DETAILS
SHEET TITLE 472-84289
448-90385
468-84514
PROJECT NUMBER

JRA
DESIGN BY
WNUJ
DRAWN BY
JRA
CHECKED BY

ISSUED
May 27, 2008
REVISED

SHEET NO.
98 of 120



⑥ Traffic Control on Broadway

Note: Traffic control to be reversed when the west half of the Main Street and Mt. Vernon intersection is closed.

Contractor to provide Temporary Signal for Broadway/Mt. Vernon.

* Not necessary if Mt. Vernon is closed in both directions.

≠ Only required when Mt. Vernon is closed to a right turn.

- LEGEND**
- ▬ Type III Barricade (Tight Road Closure)
 - Mount on Type III Barricade
 - Direction of Traffic
 - Channelizing Device
 - ↑ One Post Sign