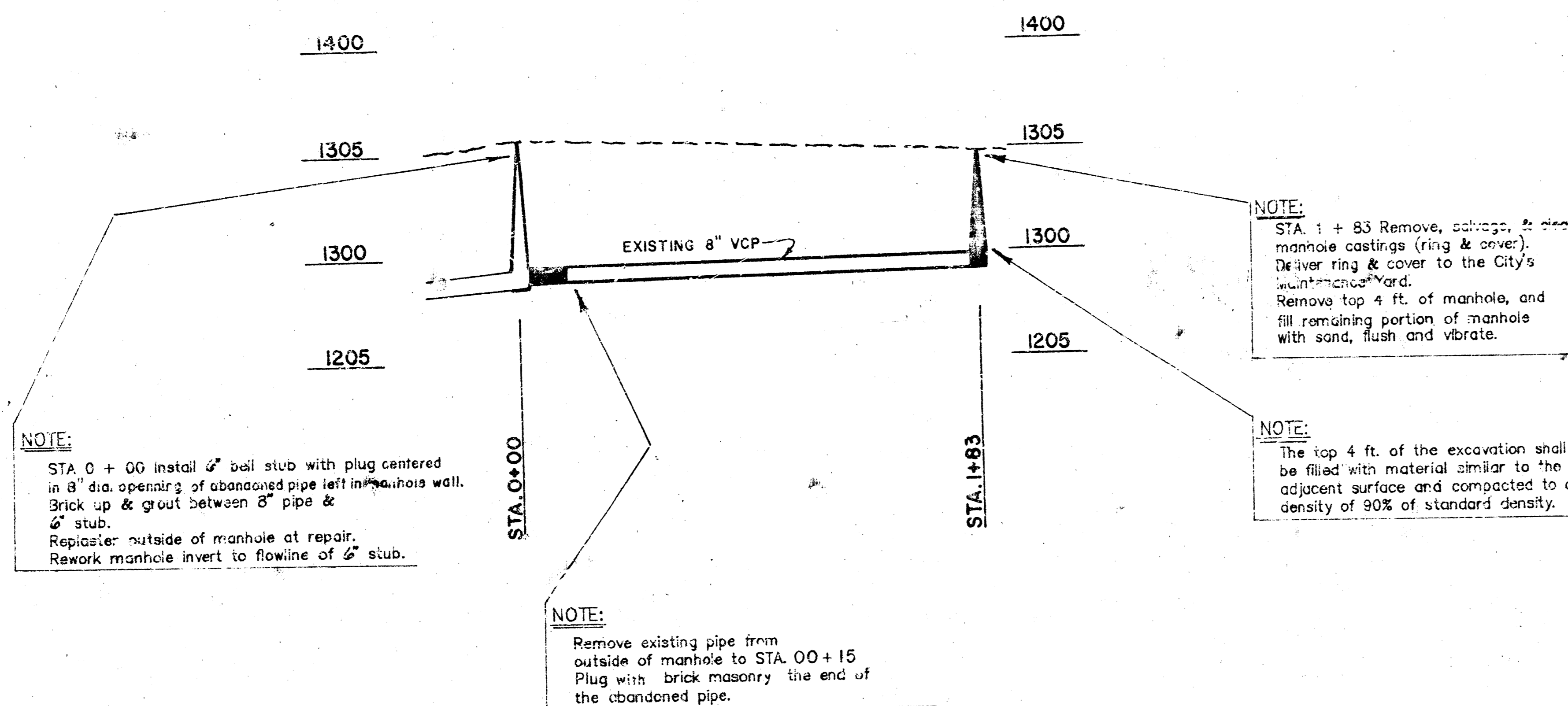
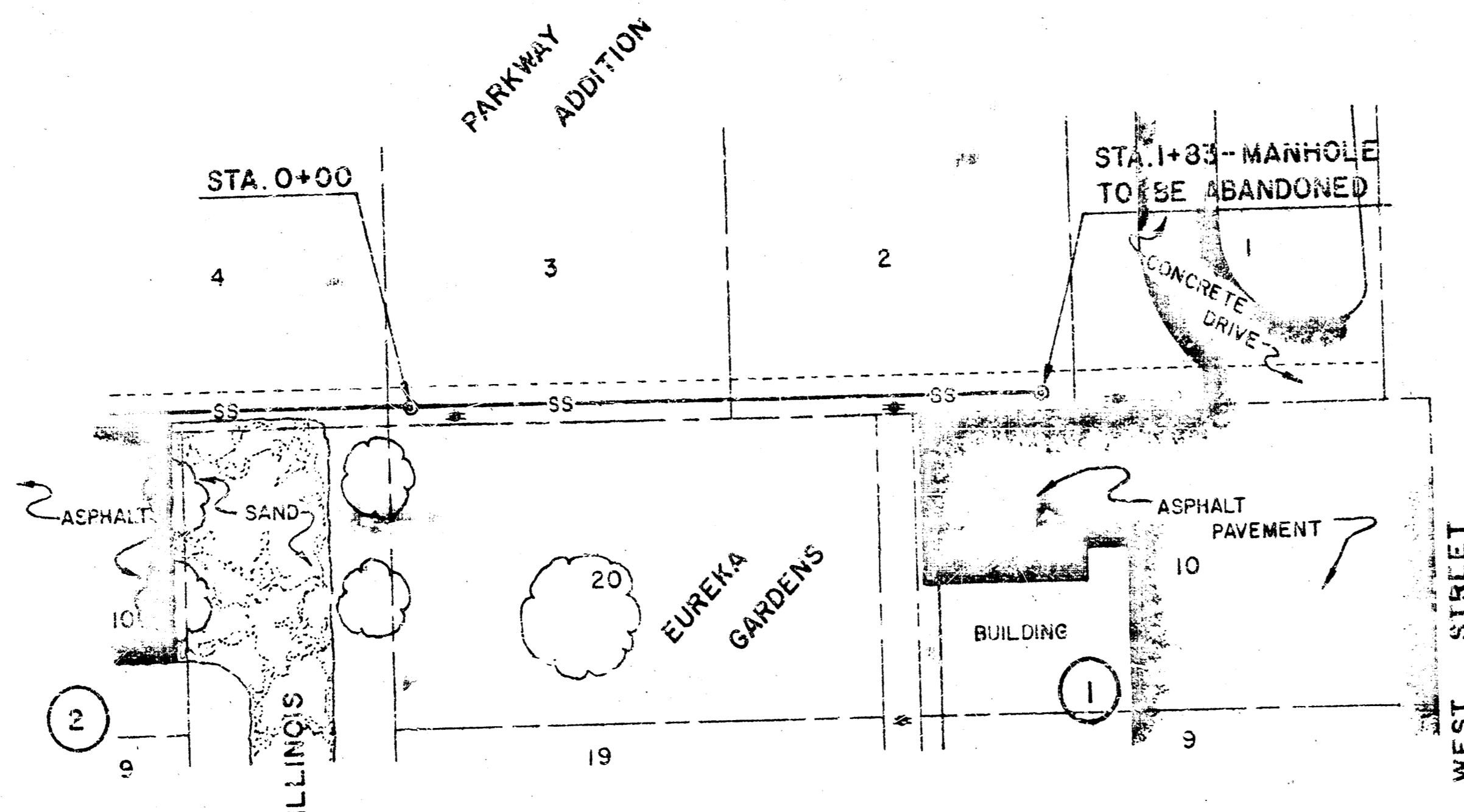


SCALE
 PROFILE (HORIZ) - 1"=40'
 PROFILE (VERT) - 1"=5'



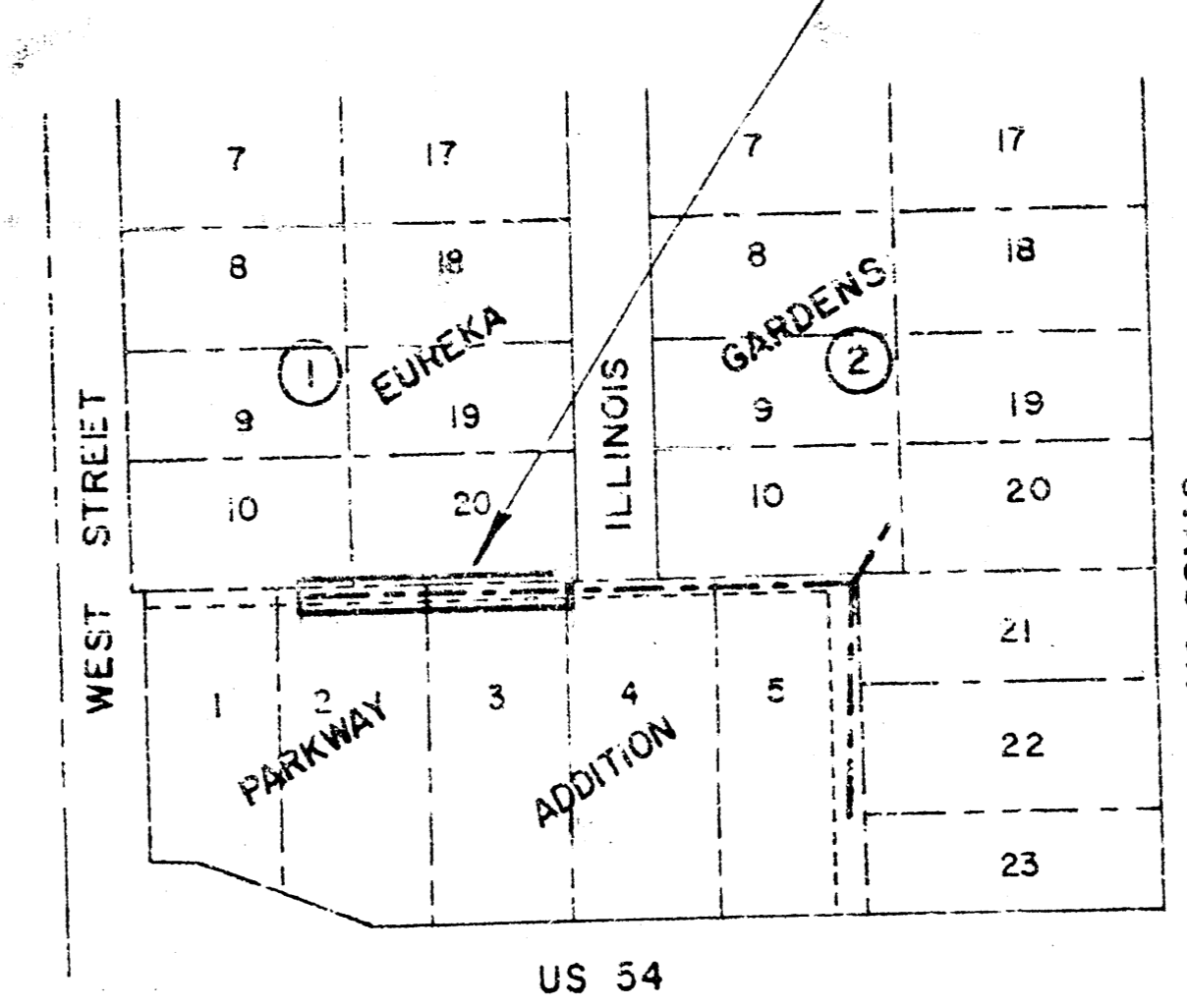
NOTE:
 STA. 0 + 00 install 6" ball stub with plug centered in 8" dia. opening of abandoned pipe left in manhole wall. Brick up & grout between 8" pipe & 6" stub.
 Repointer outside of manhole at repair.
 Rework manhole invert to flowline of 6" stub.

NOTE:
 Remove existing pipe from outside of manhole to STA. 00+15. Plug with brick masonry the end of the abandoned pipe.

NOTE:
 STA. 1 + 83 Remove, salvage, & clean manhole castings (ring & cover). Deliver ring & cover to the City's maintenance yard.
 Remove top 4 ft. of manhole, and fill remaining portion of manhole with sand, flush and vibrate.

NOTE:
 The top 4 ft. of the excavation shall be filled with material similar to the adjacent surface and compacted to a density of 90% of standard density.

SANITARY SEWER TO BE ABANDONED



VICINITY MAP

GENERAL NOTES

- CONTRACTOR WILL BE REQUIRED TO PROVIDE A MINIMUM ADVANCE NOTICE OF TWENTY-FOUR (24) HOURS TO UTILITY COMPANIES PRIOR TO STARTING ANY EXCAVATION AS FOLLOWS:
 KANSAS ONE-CALL: 687-2470
 THE CONTRACTOR MUST NOTIFY THE FOLLOWING IN CASE OF AN EMERGENCY:
 CABLEVISION 262-4270 OR 263-2061
 KPL OR SERVICE COMPANY 263-7511
 KANSAS GAS & ELECTRIC 264-1141
 KANSAS GAS COMPANY 942-8359 OR 263-8161
 KANSAS POWER BELL TELEPHONE CO. 1-571-2611
 CITY OF WICHITA WATER DEPARTMENT 268-4938
 CITY OF WICHITA SEWER MAINTENANCE 268-4071
- THE CONTRACTOR SHALL BE RESPONSIBLE FOR PRESERVING PROPERTY IRONS. THE CONTRACTOR SHALL BE REQUIRED TO RE-ESTABLISH PROPERTY IRONS WHICH ARE DAMAGED OR DESTROYED BY HIS CONSTRUCTION OPERATIONS SUCH IRONS SHALL BE TO BE ESTABLISHED BY A LICENSED LAND SURVEYOR OR A LICENSED PROFESSIONAL ENGINEER IN ACCORDANCE WITH STATE LAWS.
- EXISTING UTILITIES AND THEIR LOCATIONS, AS SHOWN ON THE PLANS, REPRESENT THE BEST INFORMATION OBTAINABLE FOR DESIGN. LOCATION INFORMATION HAS BEEN OBTAINED FROM THE VARIOUS UTILITY COMPANIES AND IS EITHER FROM COMPANY RECORD DRAWINGS OR COMPANY PROVIDED FIELD LOCATIONS. THE PLAN LOCATIONS SHOWN ARE NOT GUARANTEED. ADDITIONAL EXISTING UTILITIES MAY ALSO BE ENCOUNTERED. UNDERGROUND UTILITY SERVICE LINES AND OVERHEAD UTILITY POLE LINES ARE TO BE ADJUSTED AS NECESSARY BY OTHERS PRIOR TO CONSTRUCTION UNLESS THE PLANS SPECIFICALLY CALL FOR THEIR ADJUSTMENT BY THE CONTRACTOR OR UNLESS THE PLANS SPECIFICALLY IDENTIFY A UTILITY TO BE ADJUSTED BY ITS OWNER DURING CONSTRUCTION. THE CONTRACTOR WILL BE REQUIRED TO WORK AROUND EXISTING UTILITIES WITHIN THE RIGHT-OF-WAY WHICH DO NOT CONFLICT WITH PROPOSED CONSTRUCTION.
- ALL STUBS AND PLUGGED PIPES SHALL BE LOCATED WITH GREEN PLASTIC TAPE IN THE SAME MANNER AS RISERS.
- COST OF EXCAVATION, HAULING, AND DUMPING OF EXCESS EXCAVATION SHALL BE SUBSIDIARY TO THE PROJECT.
- RUBBLE FROM THE REMOVAL OF MISCELLANEOUS STRUCTURES AND EXCESS EXCAVATION WHICH IS TO BE WASTED SHALL BE DISPOSED OF ON SITES TO BE PROVIDED BY THE CONTRACTOR. THESE SITES SHALL BE APPROVED BY THE ENGINEER AS TO SUITABILITY, APPEARANCE AND SITE LOCATION. LOCATIONS THAT, IN THE OPINION OF THE ENGINEER, WILL LEAVE AN UNDESIRABLE APPEARANCE WILL NOT BE APPROVED.
- THE CONTRACTOR SHALL GIVE ALL PROPERTY OWNERS AND/OR TENANTS OF DEVELOPED PROPERTY ADJUTING THE CONSTRUCTION OF THIS PROJECT A MINIMUM OF TEN (10) DAYS ADVANCE NOTICE PRIOR TO START OF CONSTRUCTION.

REV. A	DEC 88	DDR	RECORD DRAWING	KPL
PROJECT NO. 468-76-245-80001-000-000-182				
CITY OF WICHITA, KANSAS SANITARY SEWER MODIFICATIONS				
LATERAL MODIFICATION DETAILS LATERAL 18, SUB 5, SS 22 PARKWAY ADDITION				
CASTLE & ASSOCIATES	DSG RMH	DWG FILE NO		
ENGINEERS	DR DDR	8831 - D - 60,058		
WICHITA, KANSAS	CH RMH			
DATE	SEPTEMBER 1988	APP	SHEET NO 1 OF 1	REV. A

FILMED FROM THE BEST AVAILABLE COPY