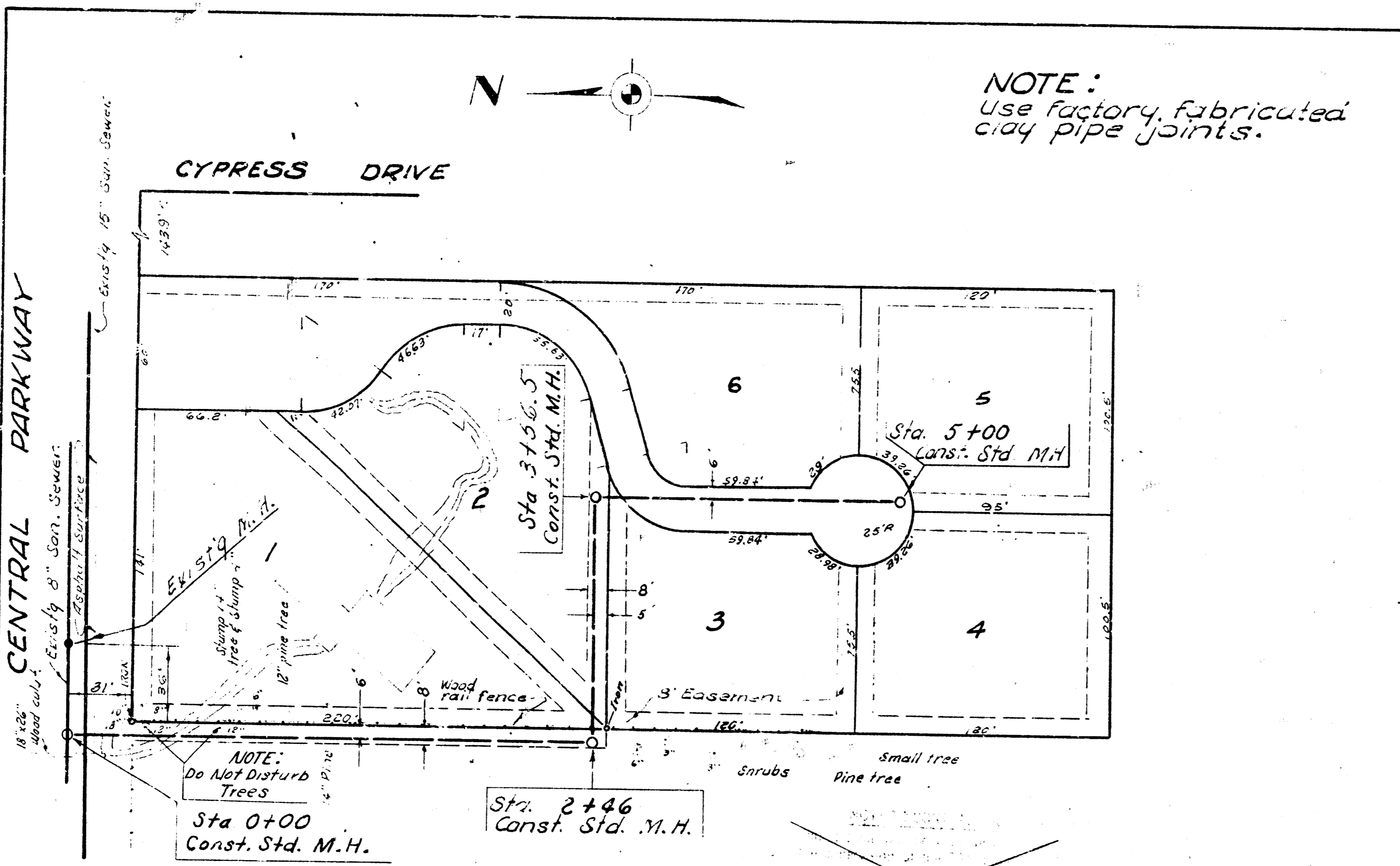
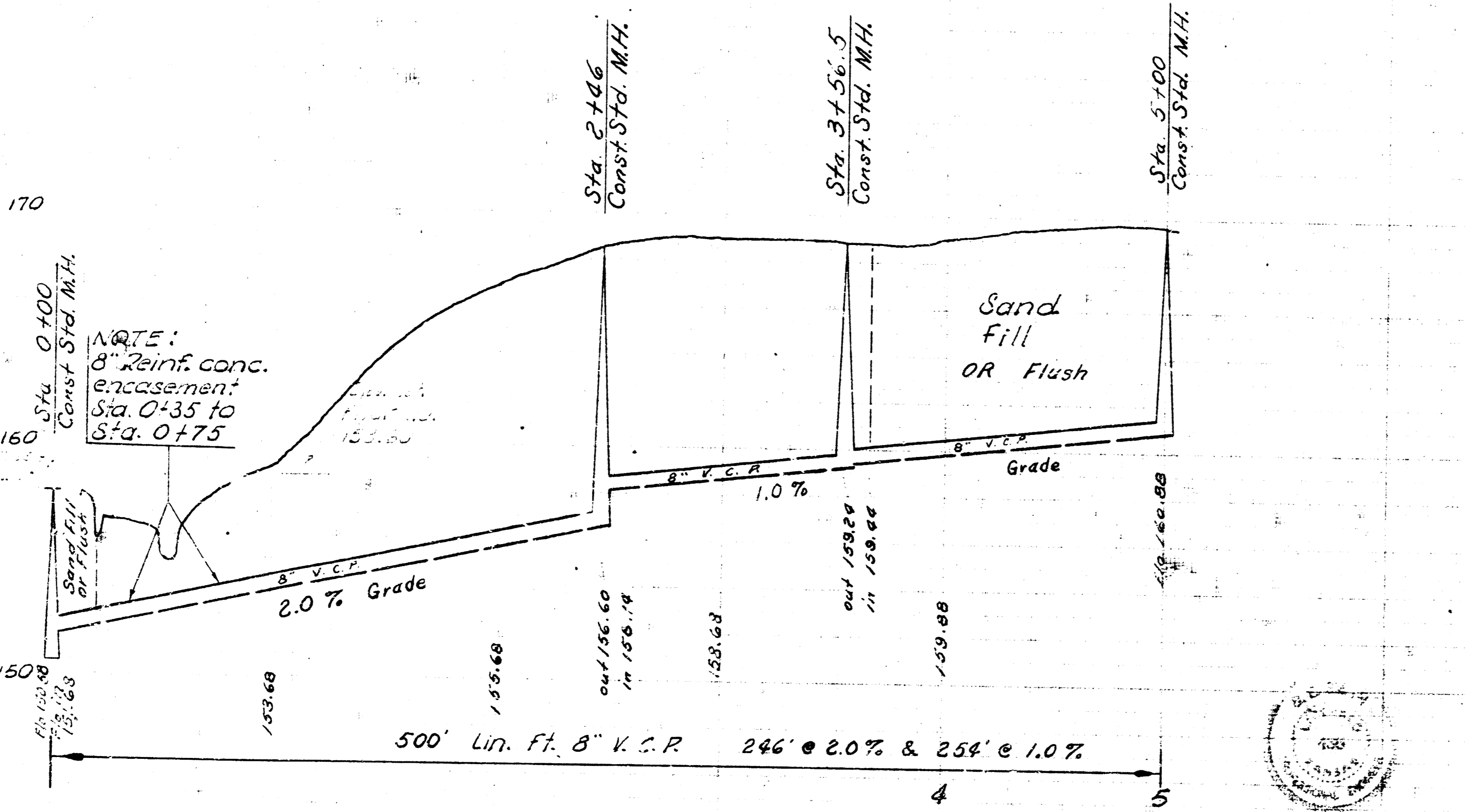


Survey by Livingston, Book No. K-57
 Original Plan No. 100
 Checked by J. O. W.

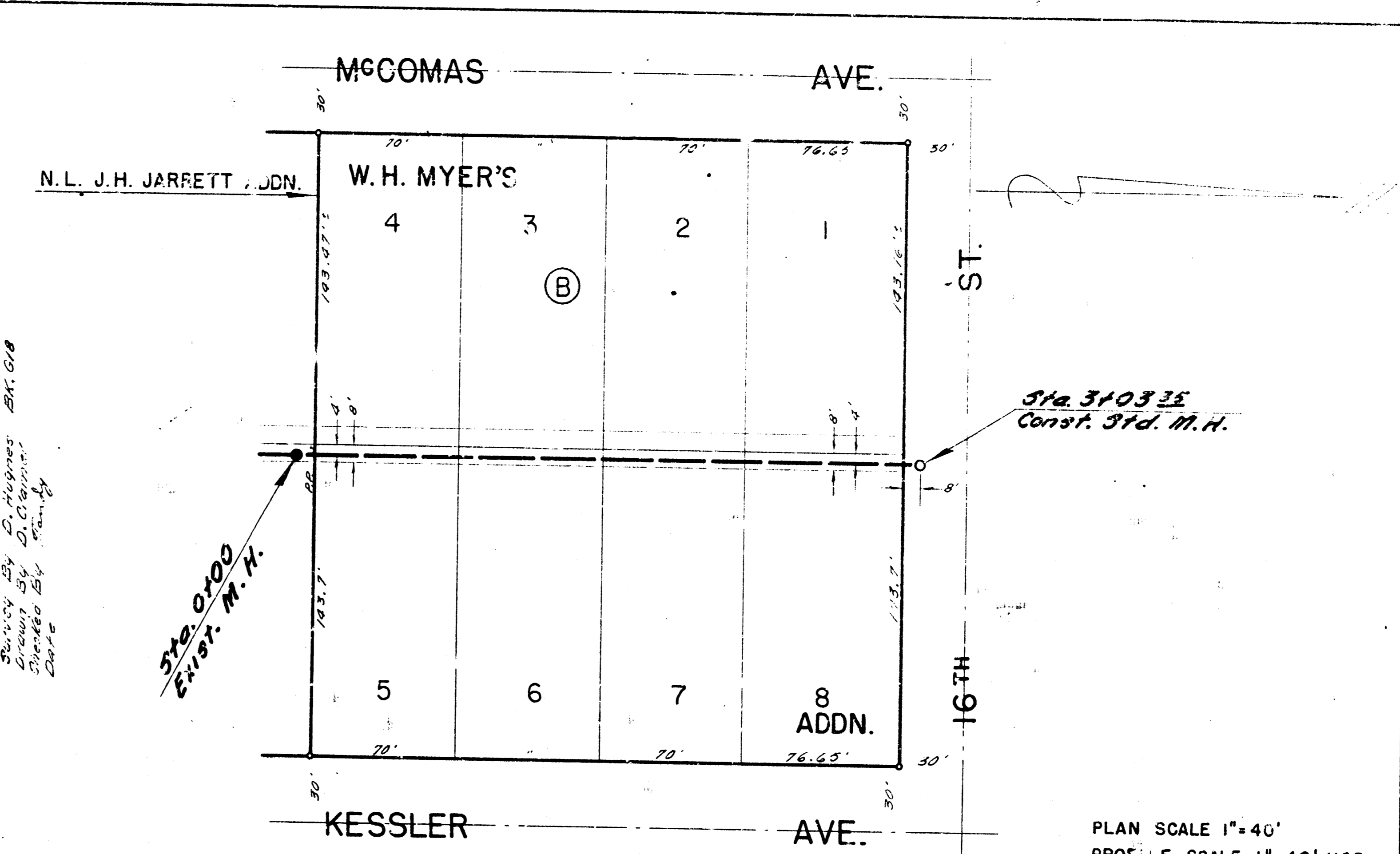


Sta. 0+00 Const. Std. M.H.
 Sta. 2+46 Const. Std. M.H.
 Sta. 3+56.5 Const. Std. M.H.
 Sta. 5+00 Const. Std. M.H.

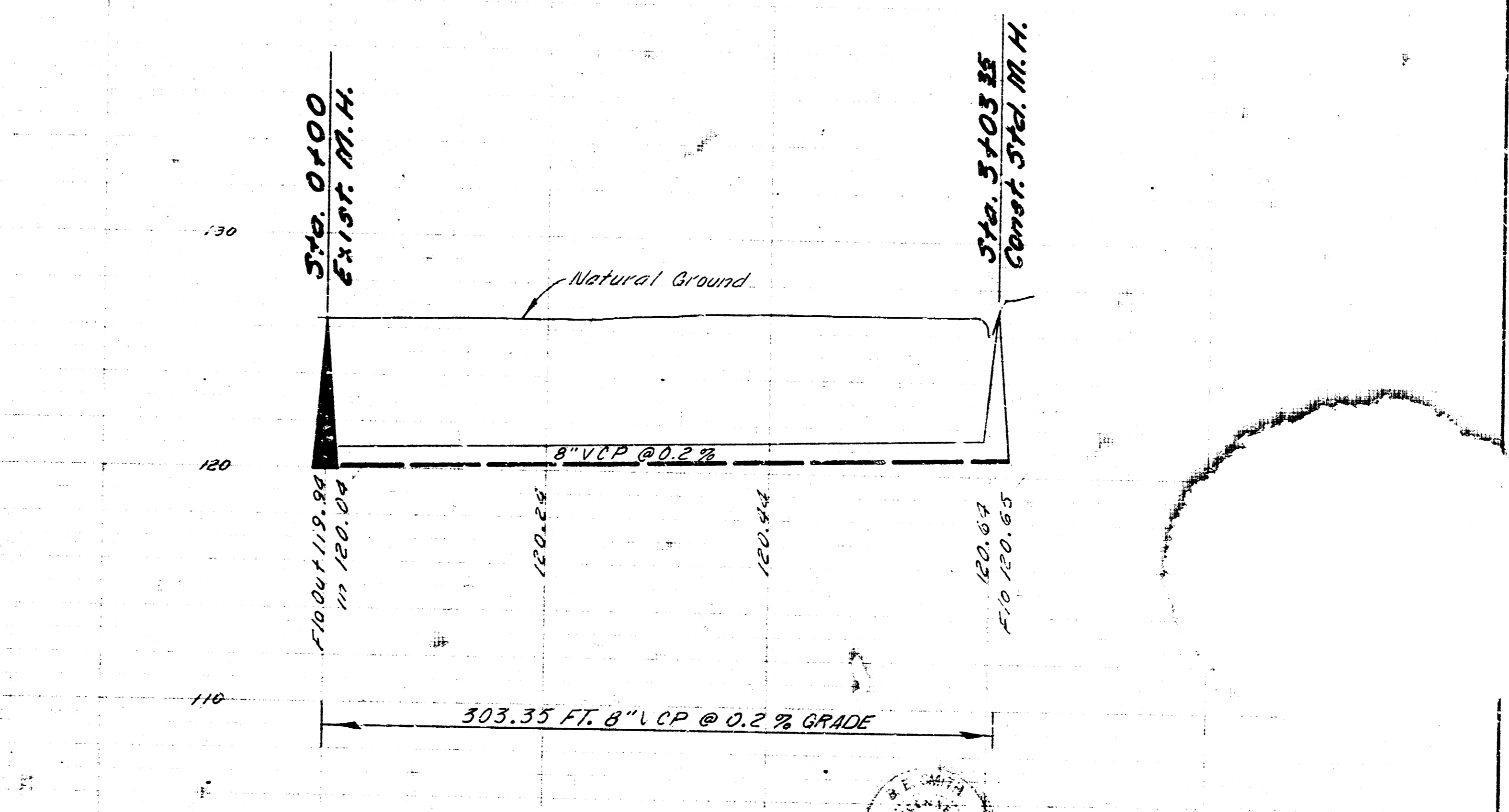
B.M. 159.73 "T" Top S. Hubbard E. end S. S. Central N. of 0+00.



LAT 27-WAR INDUSTRIES-SAN. SEWER
 CITY OF WICHITA, KANSAS
 B. E. SMITH CITY ENGINEER
 PROJ. NO C21-32 DATE FEB. 1942



B.M. 126.25 R.R. SPK. S.S. HI. LINE POLE 145' E. OF MCCOMAS 60' N. OF N.L. 15TH



LAT. 167 SUB. 5 S. S. NO. 22
 CITY OF WICHITA, KANSAS
 B. E. SMITH, CITY ENGINEER
 PROJ. NO. C21-23 DATE MAY 1943