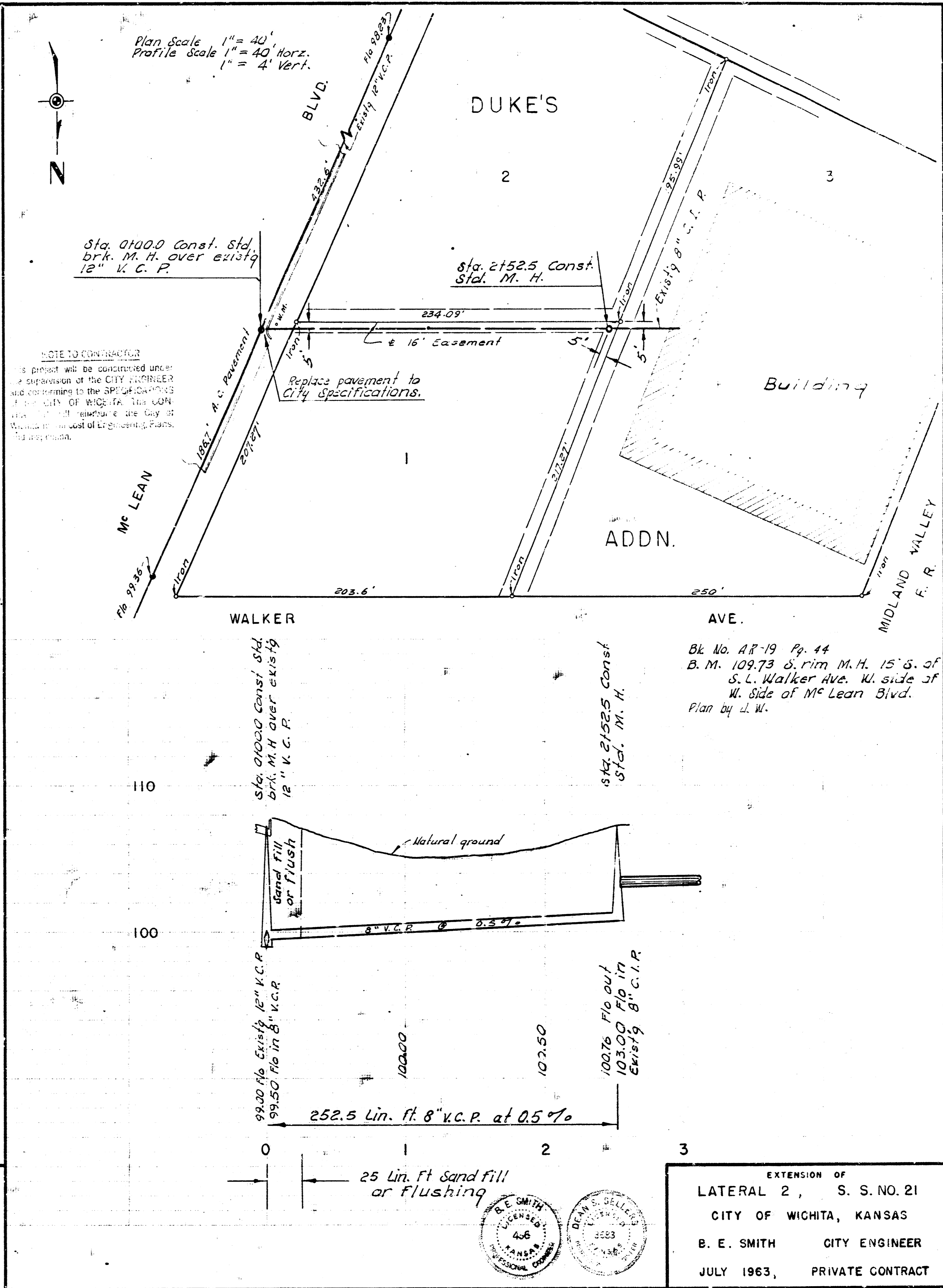


LAT. 174, SUB 5, S.S.#22
 CITY OF WICHITA, KANSAS
 B. E. SMITH, CITY ENGINEER
 PROJ. NO. G23-29 DATE APRIL 1963



EXTENSION OF
 LATERAL 2, S.S. NO. 21
 CITY OF WICHITA, KANSAS
 B. E. SMITH CITY ENGINEER
 JULY 1963, PRIVATE CONTRACT