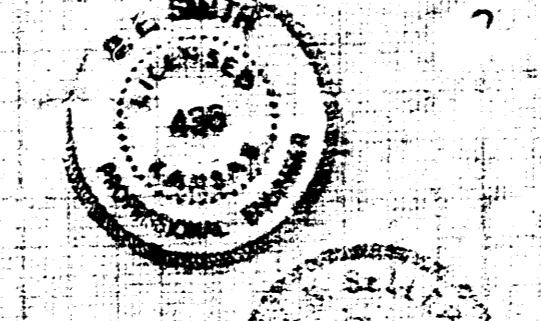
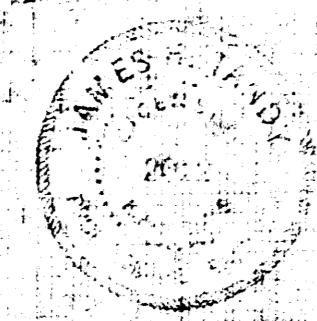
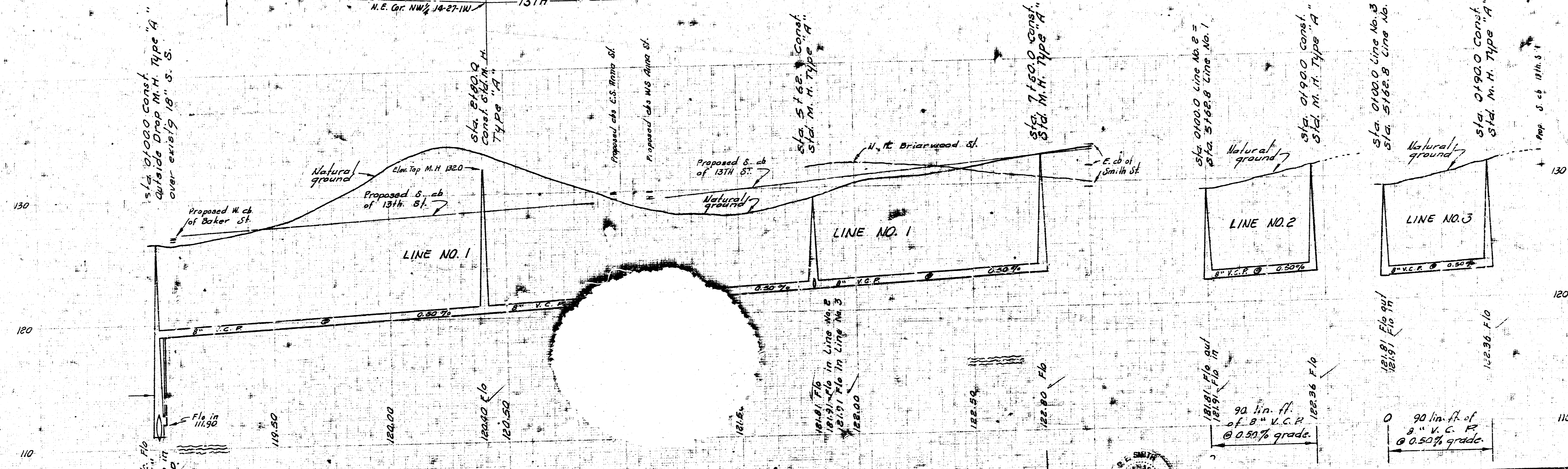
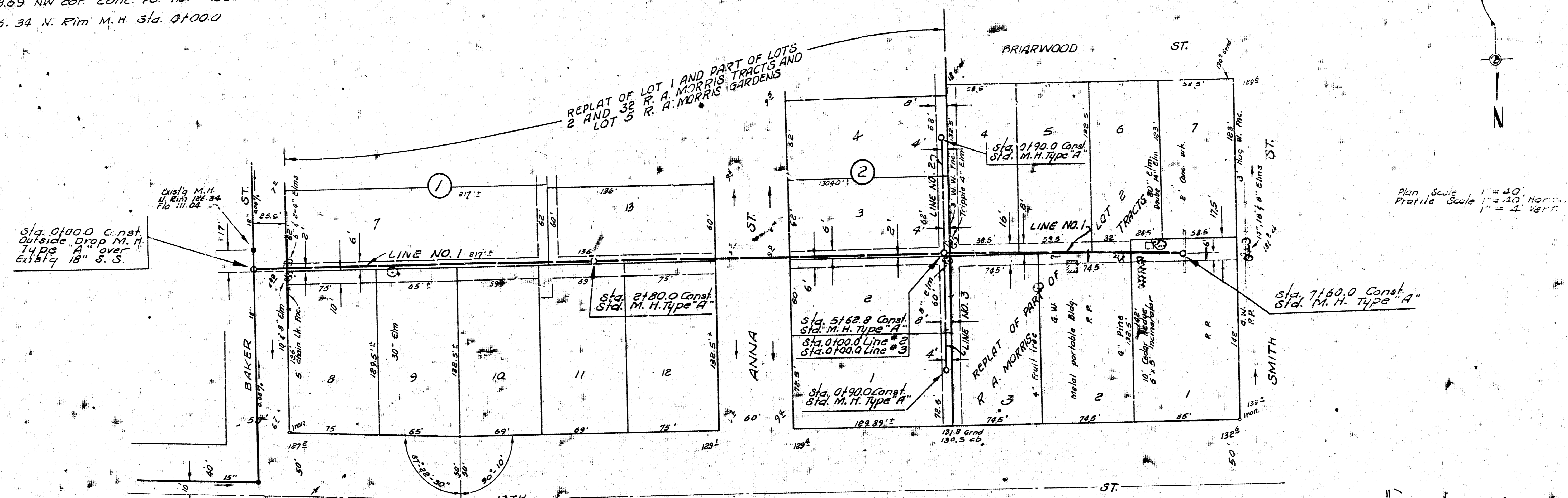


B. M. 128.69 NW cor. conc. P.O. Ho. # 1330 Baker St.  
 T. P. 126.34 N. Rim M.H. Sta. 01000

Surveyed by AR 22  
 Checked by [Signature]  
 3/19/69



LAT. 193, SUBMAIN 5, S. S. NO. 22  
 CITY OF WICHITA, KANSAS  
 B. E. SMITH CITY ENGINEER  
 APRIL 1969 PROJECT NO. C26-59