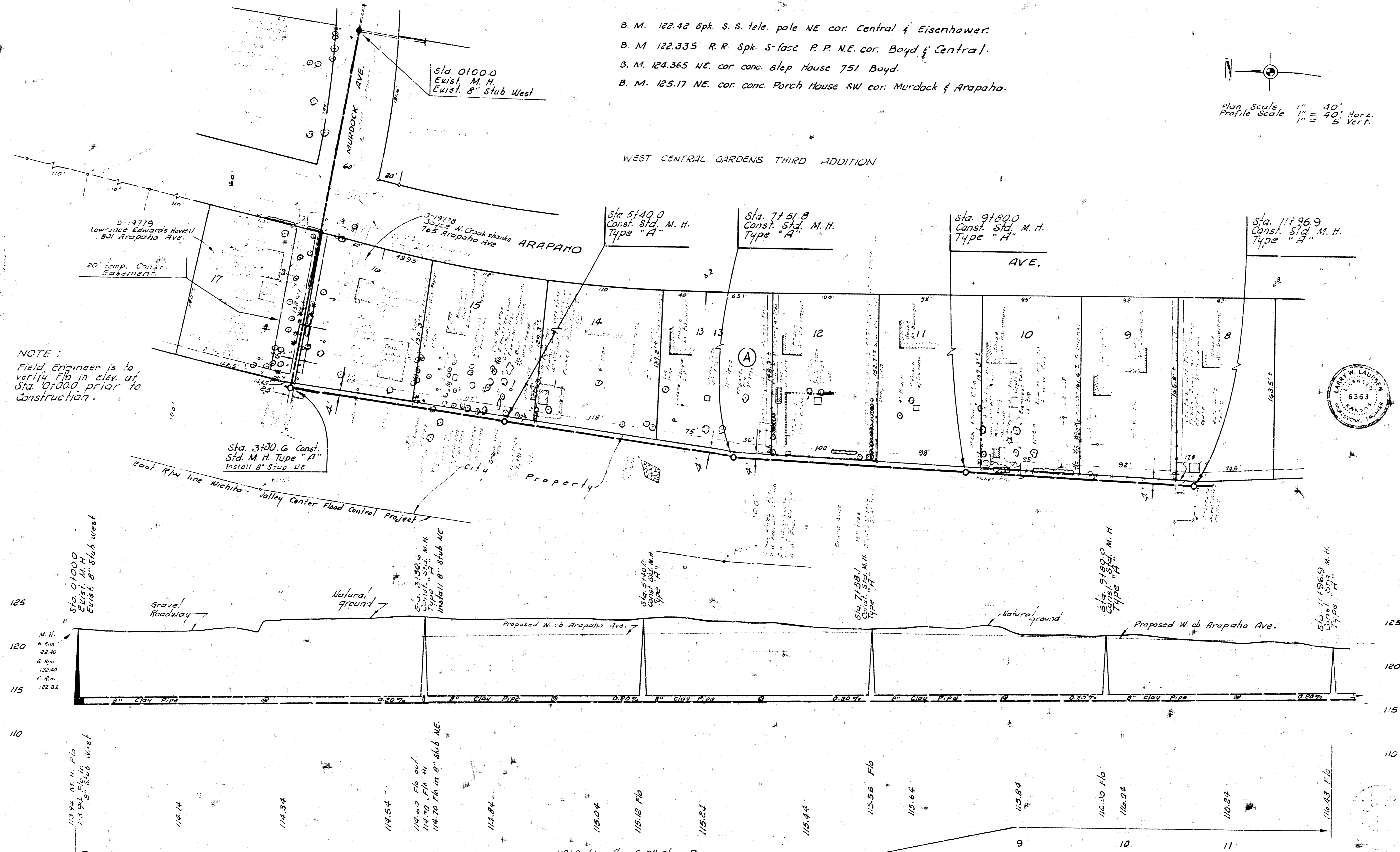


- B. M. 122.42 Spk. S. S. tele. pole NE cor. Central & Eisenhower.
- B. M. 122.335 R.R. Spk. S-face P.P. N.E. cor. Boyd & Central.
- B. M. 124.365 NE. cor. conc. Step House 751 Boyd.
- B. M. 125.17 NE. cor. conc. Porch House SW cor. Murdock & Arapaho.

Plan Scale 1" = 40'
 Profile Scale 1" = 40' Vert.

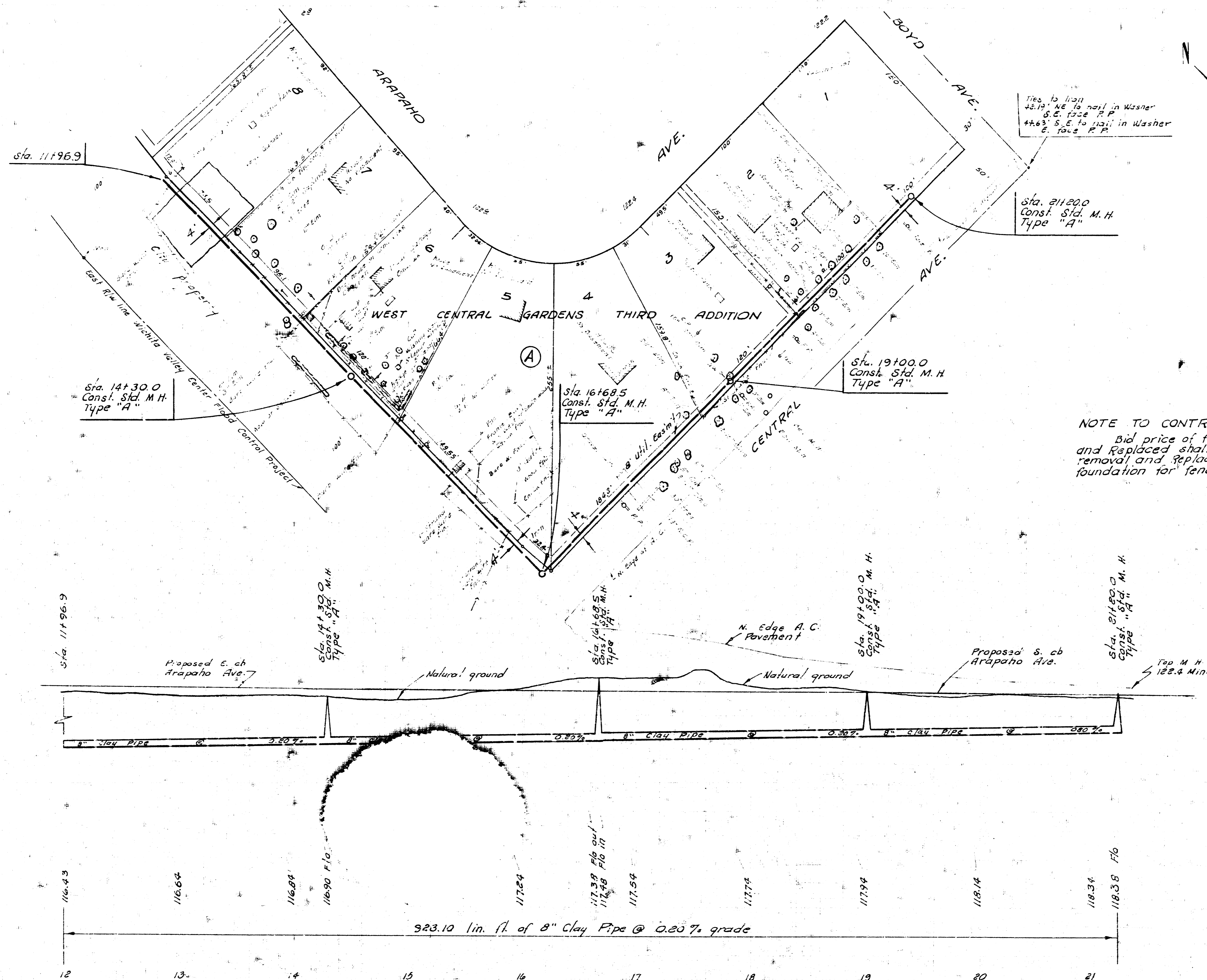
WEST CENTRAL GARDENS THIRD ADDITION



NOTE:
 Field Engineer is to verify flow in elev. at Sta. 0+00 prior to construction.



LAT. 210, SUBMAIN 5, S. S. NO. 22
 CITY OF WICHITA, KANSAS
 R. W. LINN — CITY ENGINEER
 JJNE 1972 PROJECT NO. DBKL 572005



ties to 1121
 28.10' NE to nail in Washer
 6.5' face P.P.
 446.5' S.E. to 1121; in Washer
 6. face P.P.

Sta. 21120.0
 Const. Std. M.H.
 Type "A"

Sta. 19100.0
 Const. Std. M.H.
 Type "A"

Sta. 16169.5
 Const. Std. M.H.
 Type "A"

Sta. 14130.0
 Const. Std. M.H.
 Type "A"

NOTE TO CONTRACTOR:
 Bid price of fences removed
 and replaced shall include cost of
 removal and replacement of concrete
 foundation for fence.

125
 120
 115
 110

125
 120
 115
 110

L.A.T. 210, SUBMAIN 5, S. S. NO. 22
 PROJECT NO. DBKL572005