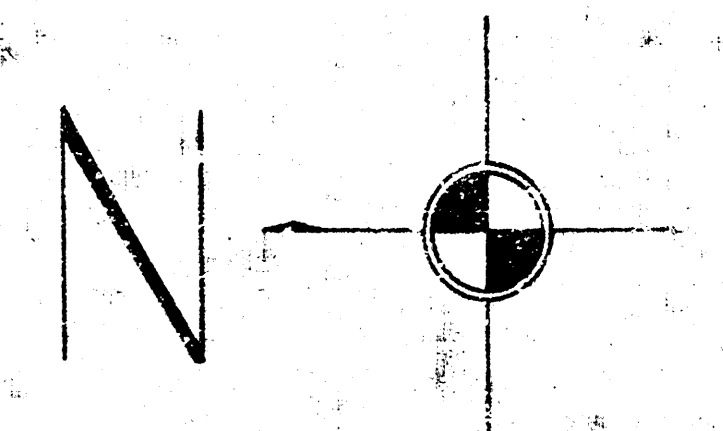
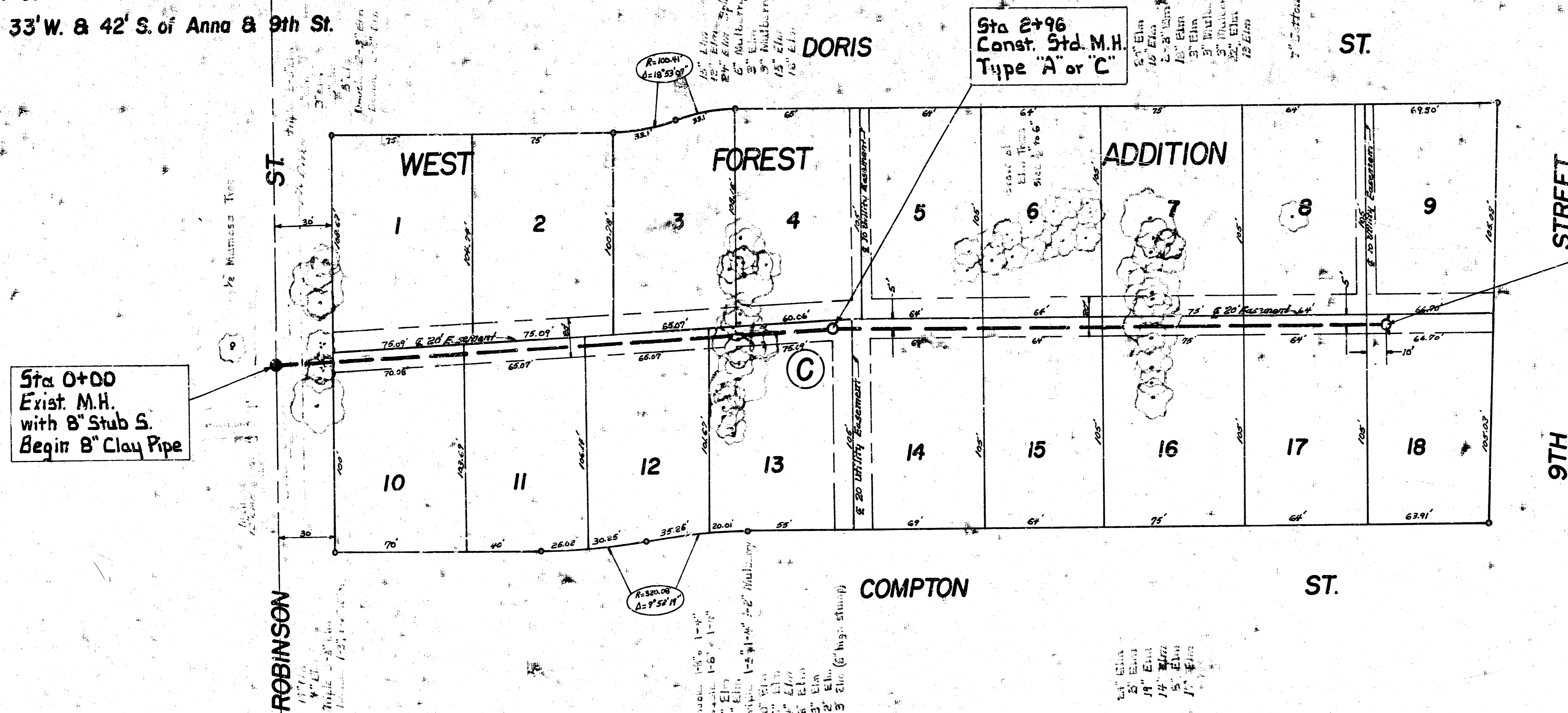


BM 126.15 West Side of P.P. at S.E. corner of Elder St. South & 9th St. North
 BM 126.98 Top of R.R. Spike in E. side of P.P. Approx. 350 ft. East of the
 Intersection of Curtis St. to the North & Robinson St.
 BM 124.64 City Std. Disc. 33' W. & 42' S. of Anna & 9th St.



Plan Scale 1" = 40'
 Profile Scale 1" = 40' Horiz.
 1" = 5' Vert.

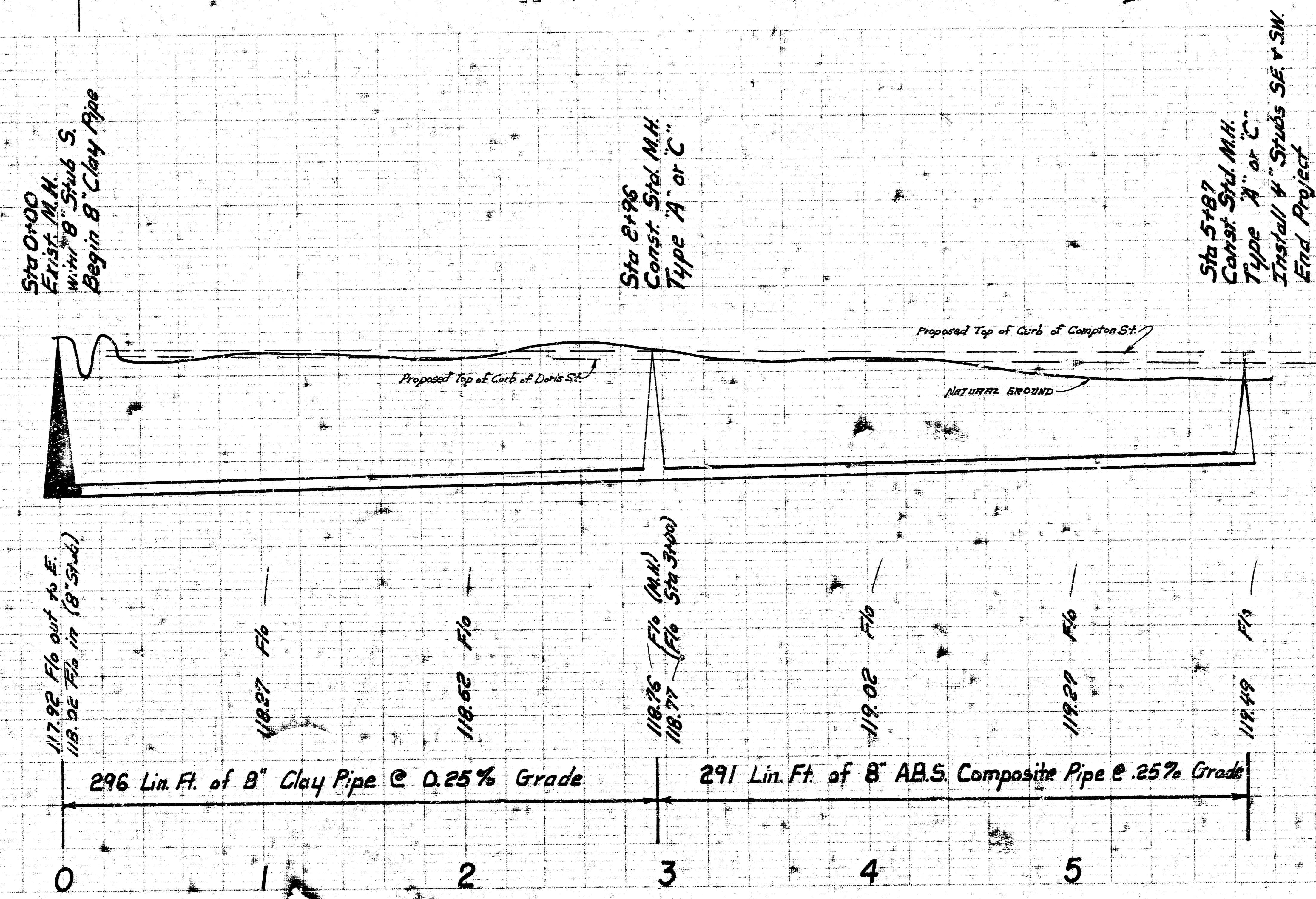


Sta 5+87
 Const. Std. M.H.
 Type "A" or "C"
 Install 4" Stubs SE. + SW.
 End Project

Sta 0+00
 Exist. M.H.
 with 8" Stub S.
 Begin 8" Clay Pipe

Sta 2+96
 Const. Std. M.H.
 Type "A" or "C"

NOTE: FIELD ENGINEER SHALL SET TOP OF MANHOLE AT STATION 5 + 87 TO A ELEVATION WHICH WILL MATCH FINISHED GRADE.



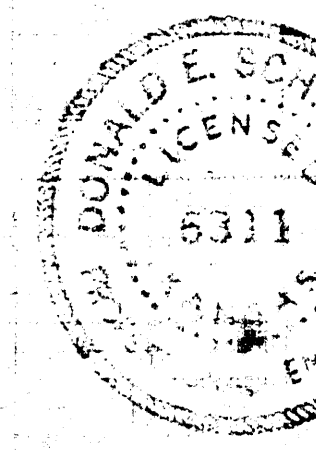
Sta 0+00
 Exist. M.H.
 with 8" Stub S.
 Begin 8" Clay Pipe

Sta 2+96
 Const. Std. M.H.
 Type "A" or "C"

Sta 5+87
 Const. Std. M.H.
 Type "A" or "C"
 Install 4" Stubs SE. + SW.
 End Project

296 Lin. Ft. of 8" Clay Pipe @ 0.25% Grade

291 Lin. Ft. of 8" A.B.S. Composite Pipe @ .25% Grade



LAT 224 MAIN 5 S.S. 22
 CITY OF WICHITA, KANSAS
 R.W. LINN CITY ENGINEER
 DATE: PROJECT NUMBER: DBKL57700