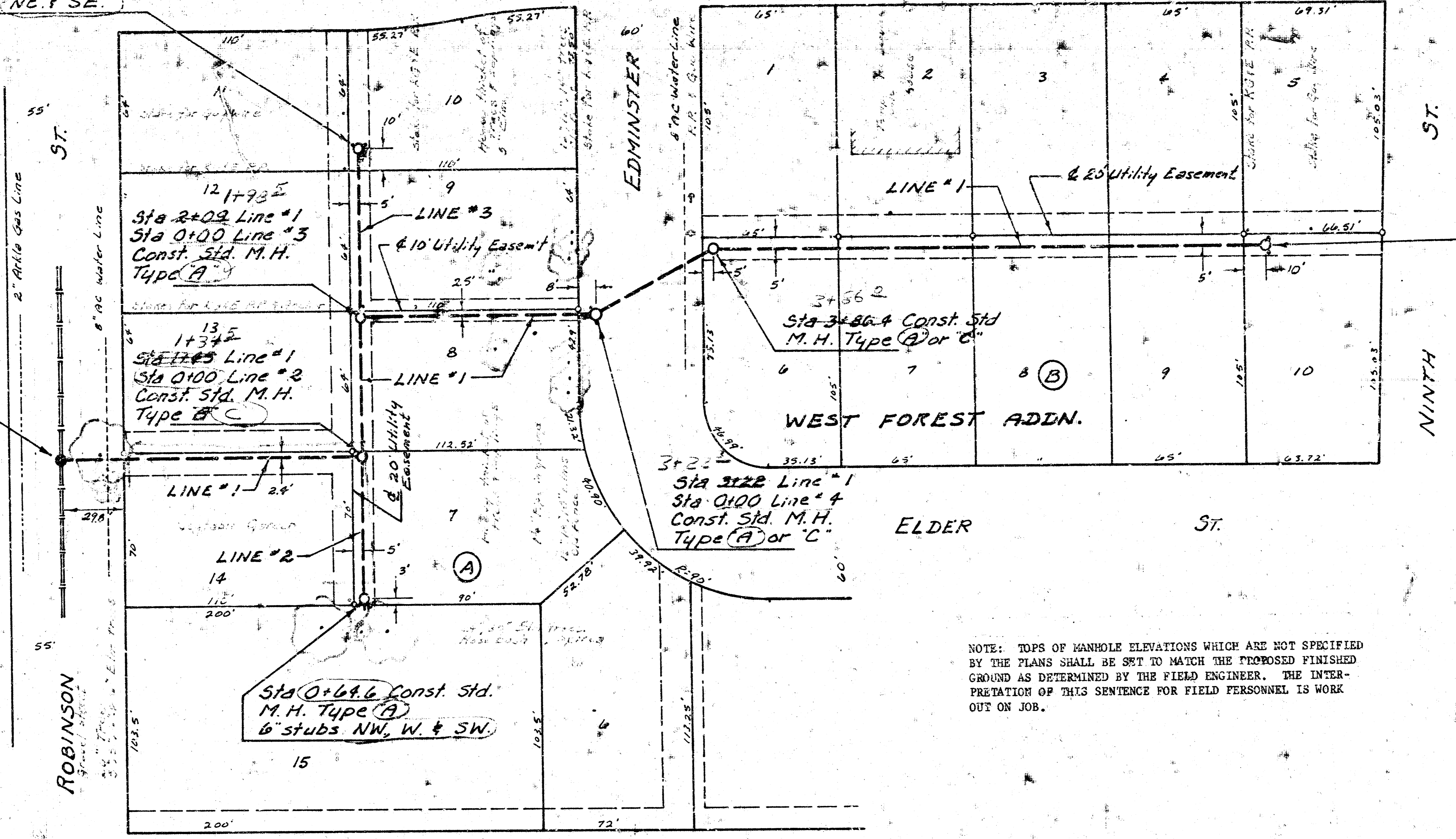


Sta 0+76.5 Const. Std. M.H. Type "A" 4" stubs NE & SE.

COMPTON ST.

ST.

Scale Plan 1" = 40'
Profile 1" = 40' Horiz
1" = 5' Vert.



NOTE: TOPS OF MANHOLE ELEVATIONS WHICH ARE NOT SPECIFIED BY THE PLANS SHALL BE SET TO MATCH THE PROPOSED FINISHED GROUND AS DETERMINED BY THE FIELD ENGINEER. THE INTERPRETATION OF THIS SENTENCE FOR FIELD PERSONNEL IS WORK OUT ON JOB.

B.M. 125.62 "1" Top West curb Compton at S.L. Edminister.
B.M. 124.15 R.R. spike west side Power Pole S.E. corner 9th & Elder south.

Sta 0+00 Exist. M.H. Remove 8" Clay stub Install 8" A.B.S. Composite Pipe

Sta 1+45 Line #1
Sta 0+00 Line #2
Const. Std. M.H. Type "A"

Sta 2+09 Line #1
Sta 0+00 Line #3
Const. Std. M.H. Type "A"

Sta 3+22 Line #1
Sta 0+00 Line #4
Const. Std. M.H. Type "A" or "C"

Sta 3+22.4 Const. Std. M.H. Type "A" or "C"

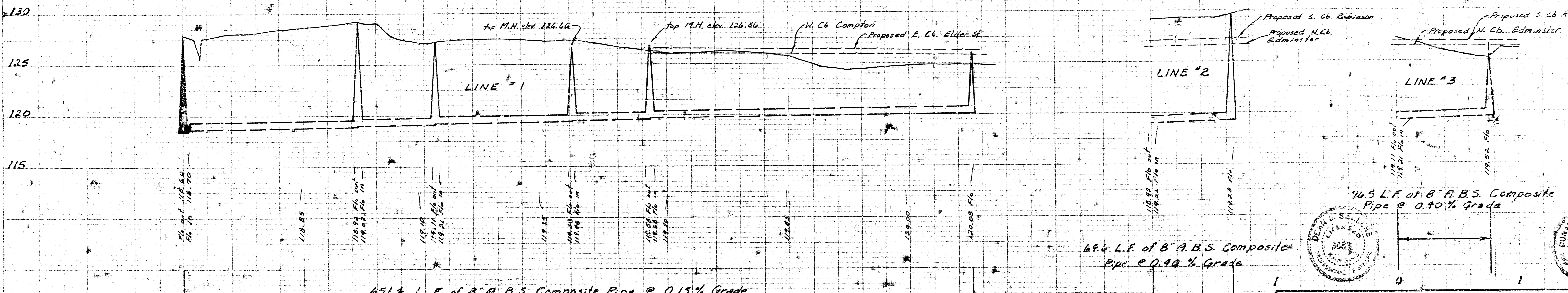
Sta 6+51.4 Const. Std. M.H. Type "A" or "C" 4" stubs SE & SW

Sta 0+00 Line #2
Sta 1+45 Line #1

Sta 0+64.6 Const. Std. M.H. Type "A" 6" stubs NW, W & SW

Sta 0+00 Line #3
Sta 2+09 Line #1

Sta 0+76.5 Const. Std. M.H. Type "A" 4" stubs NE & SE



Professional Engineer Seal: D. W. LINN, No. 365, State of Kansas, Mechanical Engineering.

LAT 225, MAIN 5, SANITARY SEWER NO.
CITY OF WICHITA, KANSAS
R. W. LINN — CITY ENGINEER
DATE _____ PROJ. NO. 465-76-245-80319-000-0

