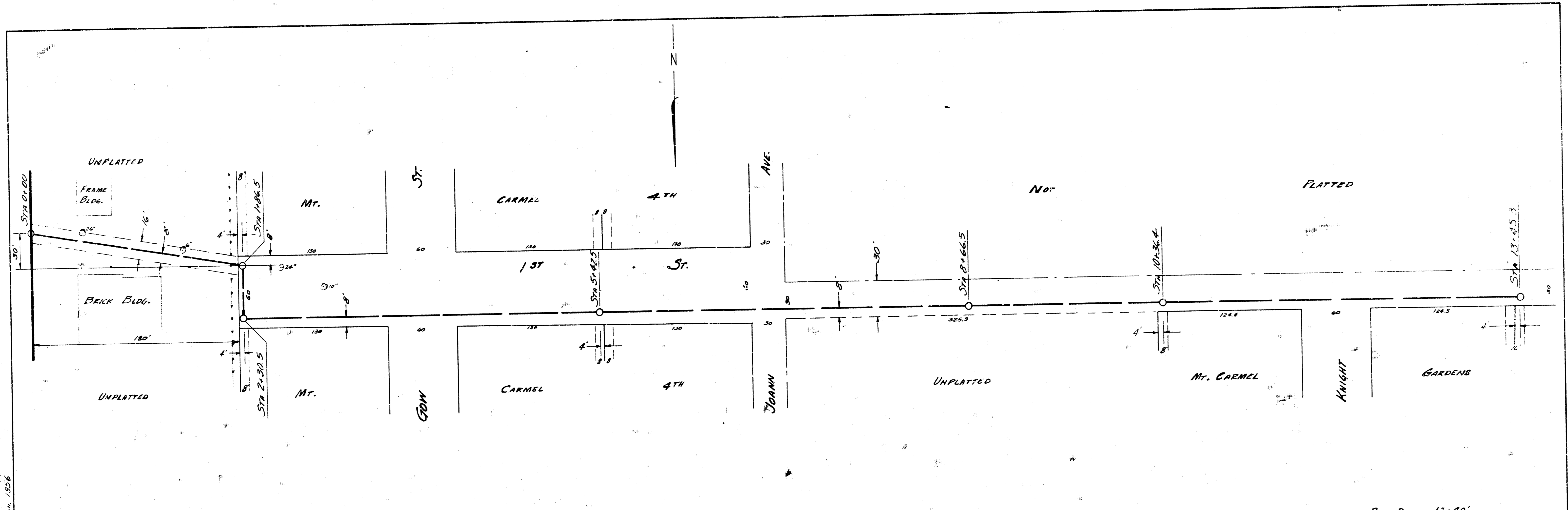


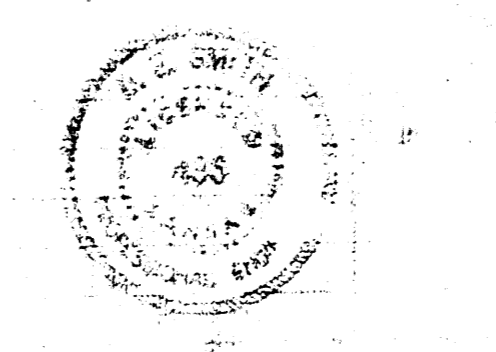
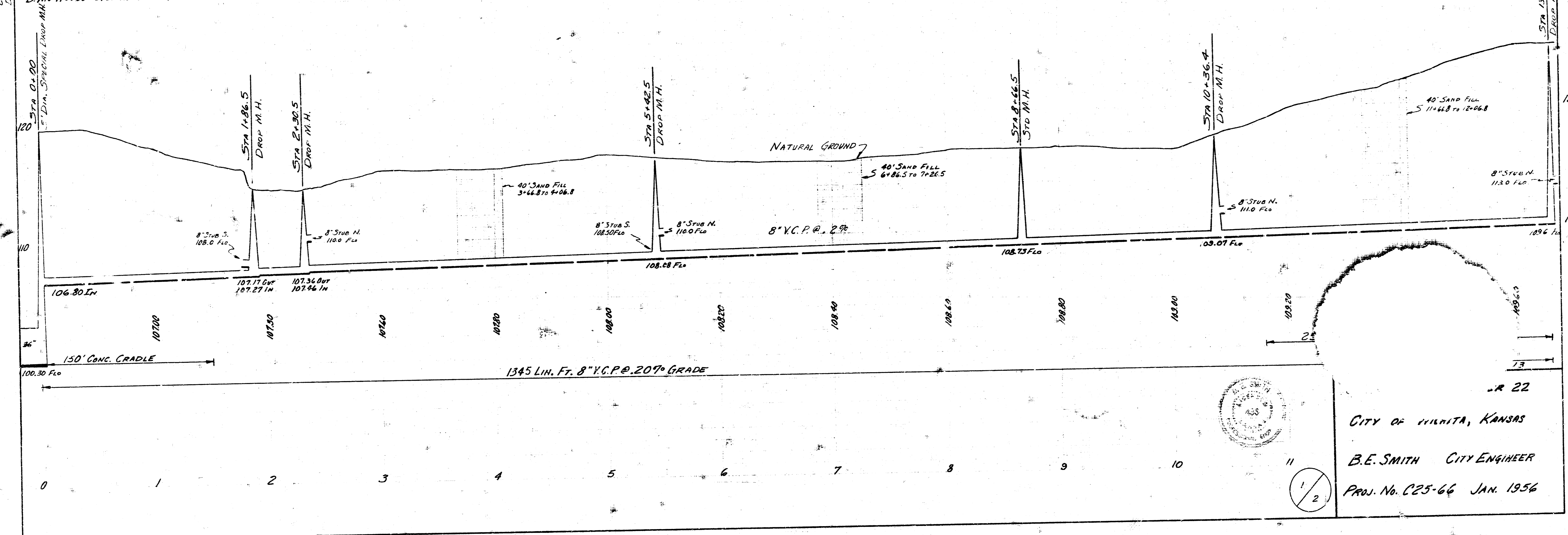
Survey I. Hanson November 14 1919  
 Plan D. Sellers  
 Checked Jan. 1956



B.M. 117.89 STD. M.H. COR. SHERIDAN & SECOND  
 B.M. 113.69 STD. N.E. COR. WEST 4 TH

NOTE: 8" STUBS OUT OF M.H.'S ARE TO BE EXTENDED TO THE EDGE OF THE EXCAVATION. THE PIPE IS TO BE SUPPORTED BY 2 SACK CONCRETE BEHIND THE SPIN PIER. THE COST OF THE 2 SACK SUPPORT SHALL BE CONSIDERED INCLUDED IN THE BID PRICE OF THE MANHOLE.

PLAN SCALE 1"=40'  
 PROFILE SCALE 1"=40' HORIZ. 1"=4' VERT.



-R 22  
 CITY OF WILMOTA, KANSAS  
 B.E. SMITH CITY ENGINEER  
 PROJ. No. C25-66 JAN. 1956

1/2

