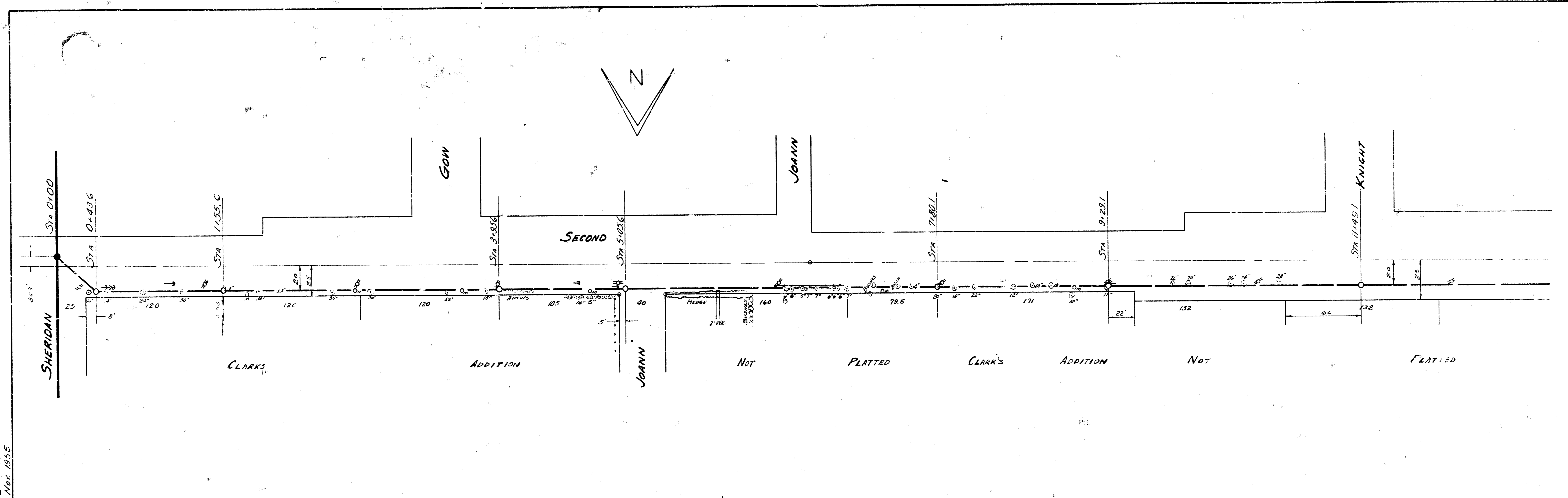


Surveyed by Hanson, Notations 11/23
 Carl D. Sellers
 Date Nov. 1955

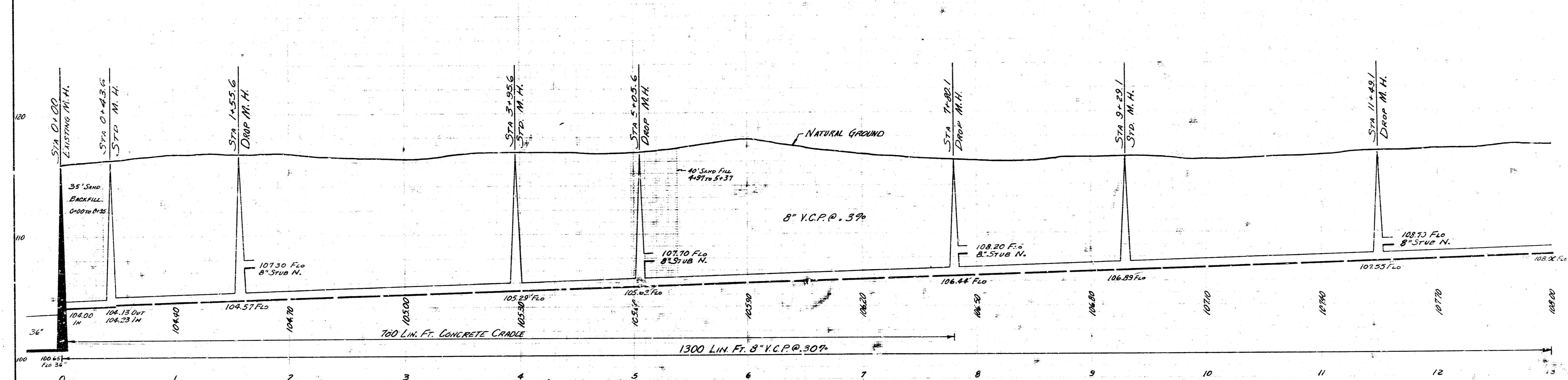


B.M. 119.69 STD. NE COR. 2ND & WEST ST.
 B.M. 117.89 STD. NW COR. SHERIDAN & 2ND

NOTE: WYES & RISERS TO BE SET AS DIRECTED BY THE ENGINEER.

NOTE: 8" STUBS OUT OF M.H.'S ARE TO BE EXTENDED TO THE EDGE OF THE EXCAVATION. THE PIPE IS TO BE SUPPORTED BY A 2 SACK CONCRETE BEYOND THE BRICK PIER. THE COST OF THE 2 SACK SUPPORT SHALL BE CONSIDERED INCLUDED IN THE BID PRICE OF THE M.H.

PLAN SCALE 1" = 40'
 PROFILE SCALE 1" = 40' VERTICAL



SUBMAIN 7 SANITARY SEWER 22
 CITY OF WICHITA, KANSAS
 B.E. SMITH CITY ENGINEER
 PROJ. NO. C25-61 SHEET 1 OF 2

