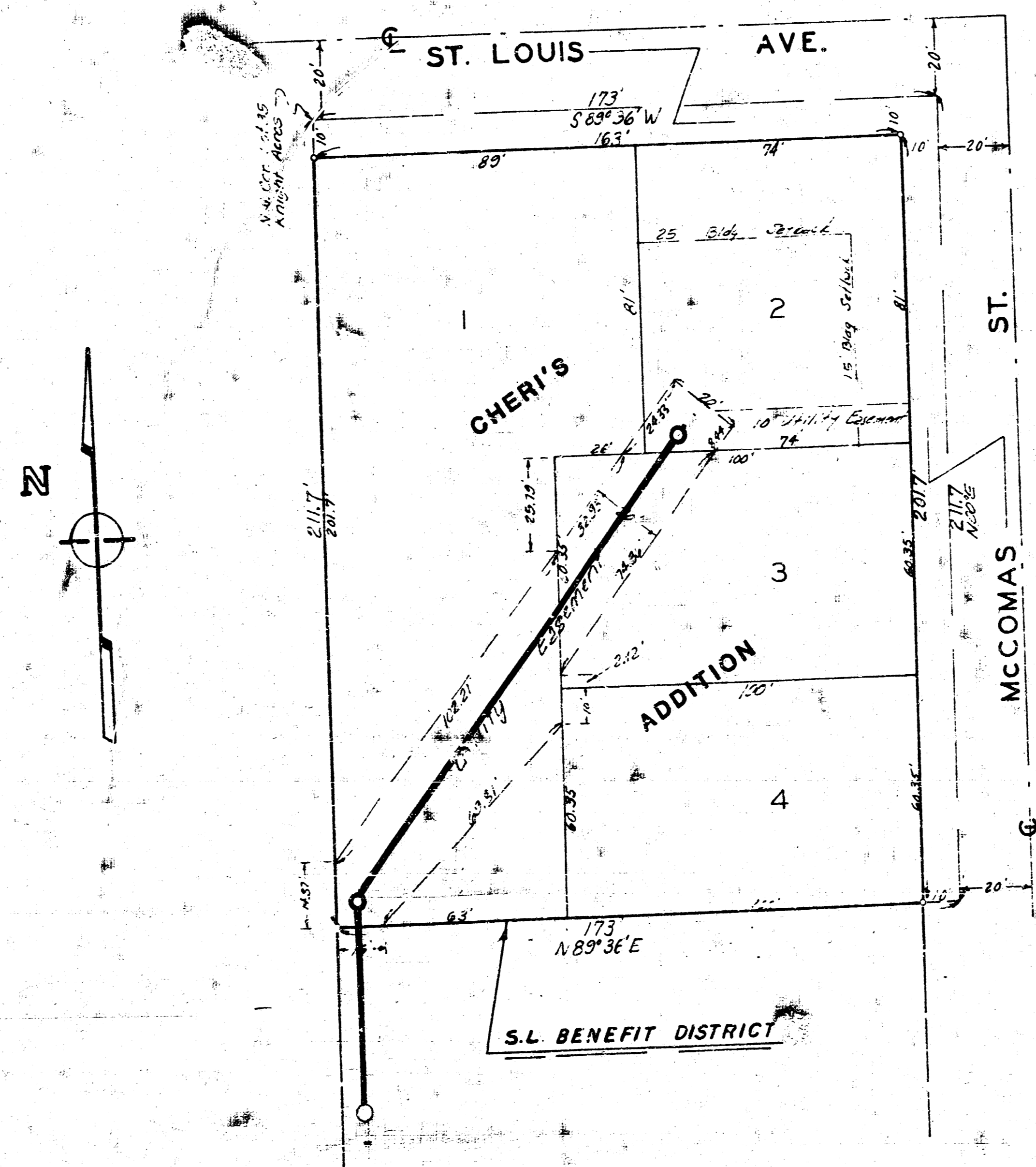


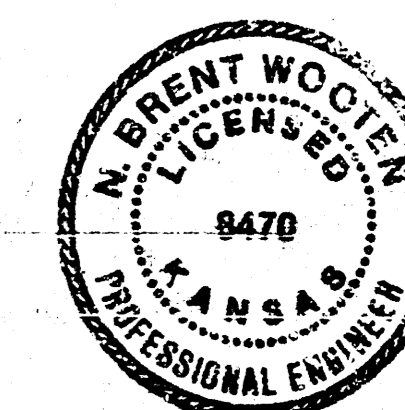
# LAT. 11 MAIN 7, SS 22

TO SERVE CHERI'S ADDITION  
PROJ. NO. 468-76-245-81396-000-000-001

*As Built  
N.L.L.  
4-85*



**CITY OF WICHITA, KANSAS**  
MIKE E. LINDEBAK, CITY ENGINEER

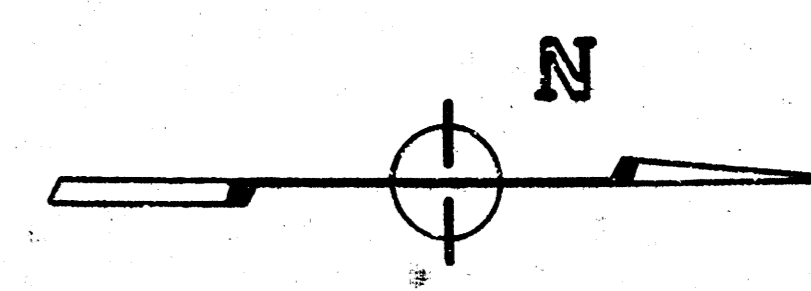
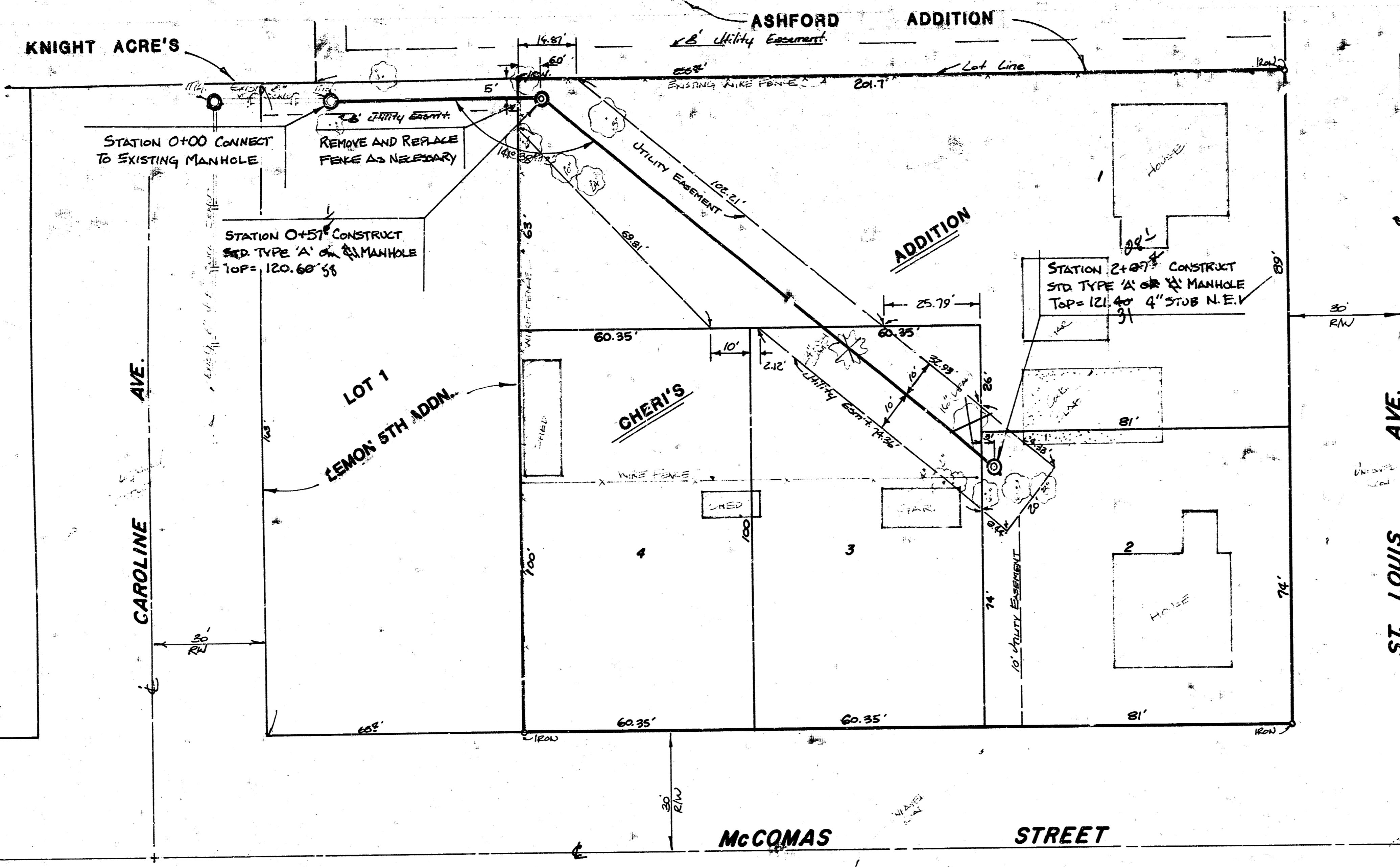


DECEMBER 1984

**BAUGHMAN COMPANY, P.A.**  
SURVEYING & ENGINEERING  
316/262-7271 • 330 LAURA • WICHITA, KANSAS 67211

FILMED FROM THE BEST  
AVAILABLE COPY .....

BENCH MARK: R.R. SPIKE, SOUTH SIDE POWER POLE @ S.W. CORNER ST. LOUIS AND MCCOMAS ELEV. = 121.87 CITY DATUM



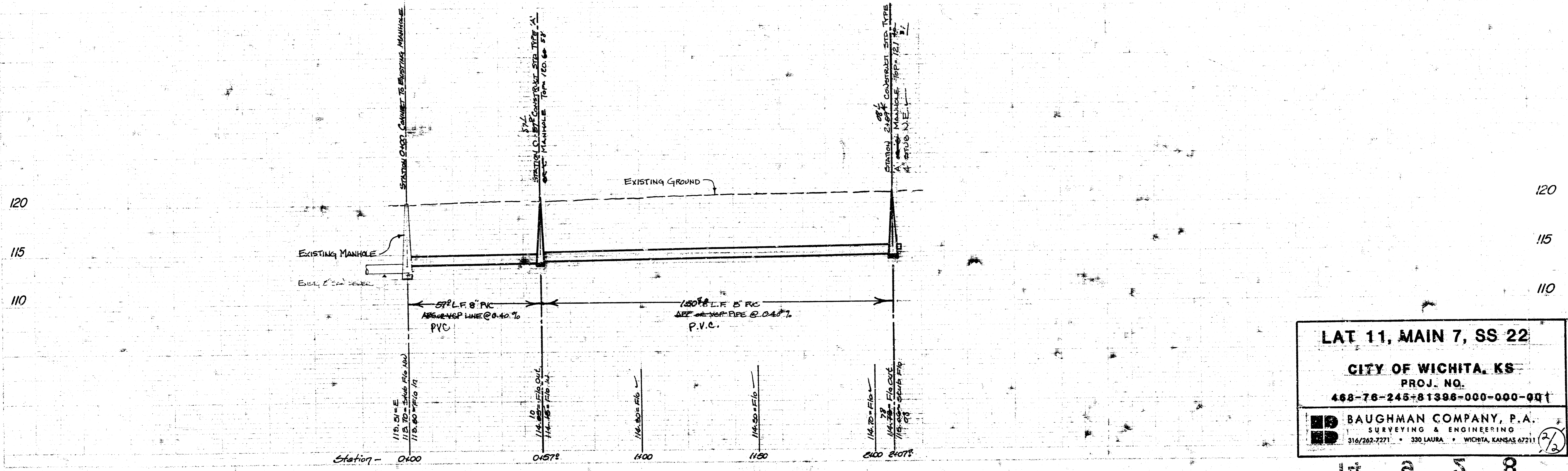
SCALE: 1" = 20' PLAN  
1" = 20' PROFILE HORIZ.  
1" = 5' PROFILE VERT.

*As Built  
JLH  
4-85*

NOTE: ALL TREES SHALL BE SAVED EXCEPT THOSE INDICATED FOR REMOVAL.

GENERAL NOTE

The contractor shall be responsible for preserving the property irons. The contractor shall be required to re-establish any property irons which are damaged or destroyed by his construction operations. Such irons shall be re-established in accordance with state laws.



LAT 11, MAIN 7, SS 22  
CITY OF WICHITA, KS  
PROJ. NO.  
468-76-245-81398-000-000-001  
BAUGHMAN COMPANY, P.A.  
SURVEYING & ENGINEERING  
316/262-7271 • 330 LAURA • WICHITA, KANSAS 67211

17 0 5 8

FILMED FROM THE BEST AVAILABLE COPY.....