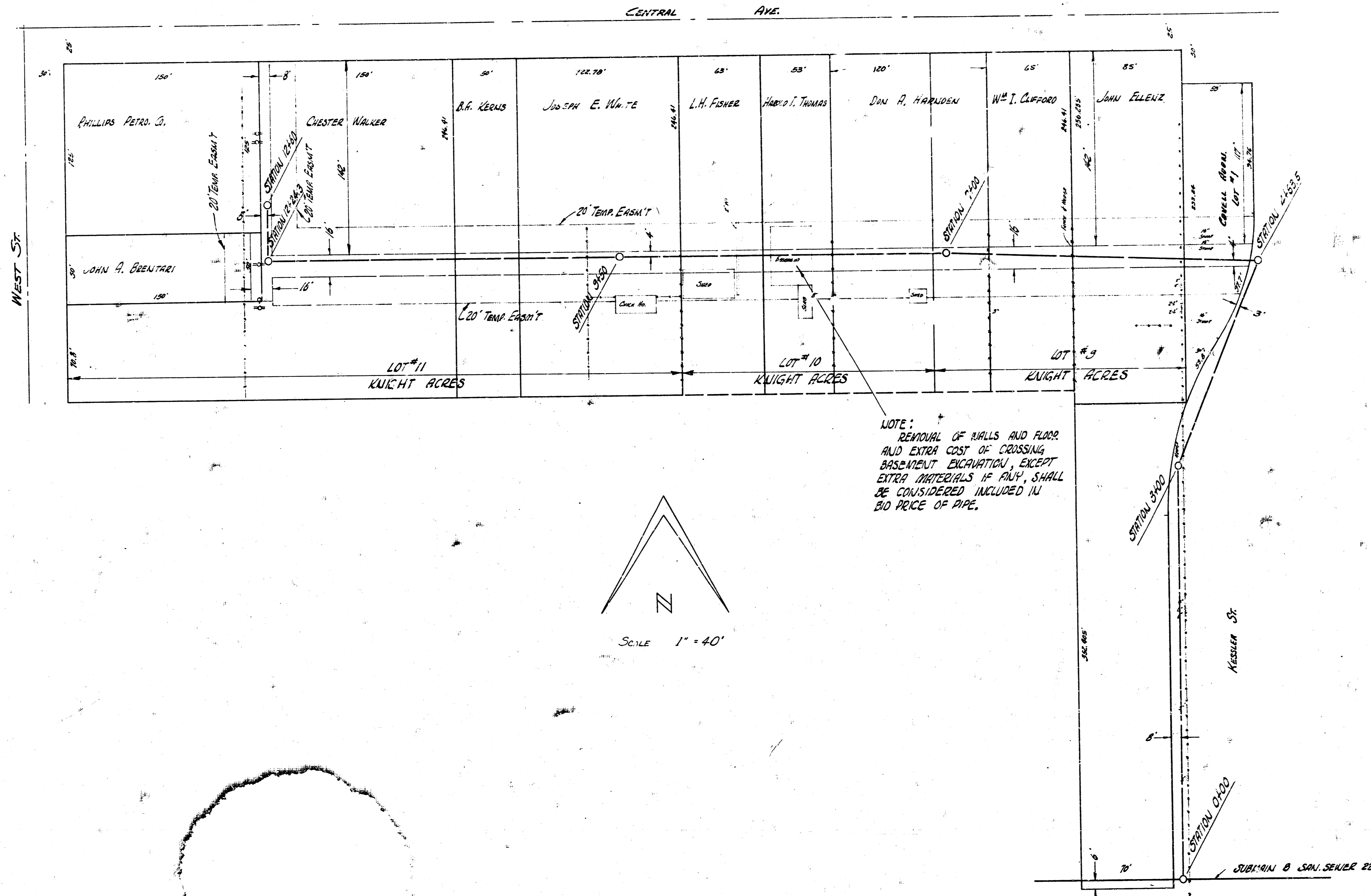


SURVEY BY - ARVIGLER B214-2453
DRAWN BY - ARVIG
CHECKED BY -

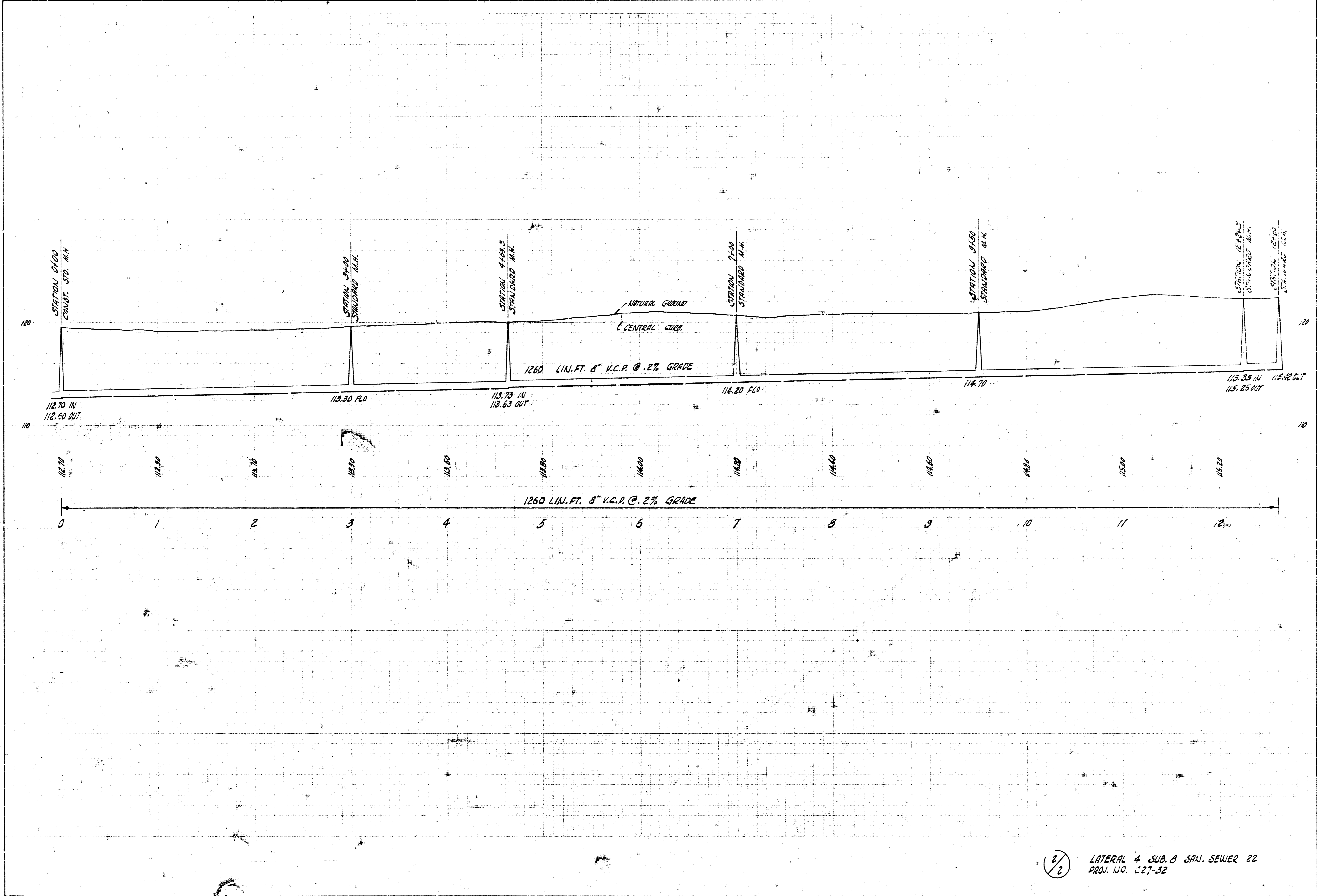


NOTE:
REMOVAL OF RILLS AND FLOOR
AND EXTRA COST OF CROSSING
BASEMENT EXCAVATION, EXCEPT
EXTRA MATERIALS IF ANY, SHALL
BE CONSIDERED INCLUDED IN
BID PRICE OF PIPE.



LATERAL & SUB. B S.S. 22
CITY OF WICHITA, KANSAS
B.E. SMITH CITY ENGINEER
PROJ. NO. C27-32 DATE

1/2



2/2 LATERAL 4 SUB. B SAN. SEWER 22
 PROJ. NO. C27-32