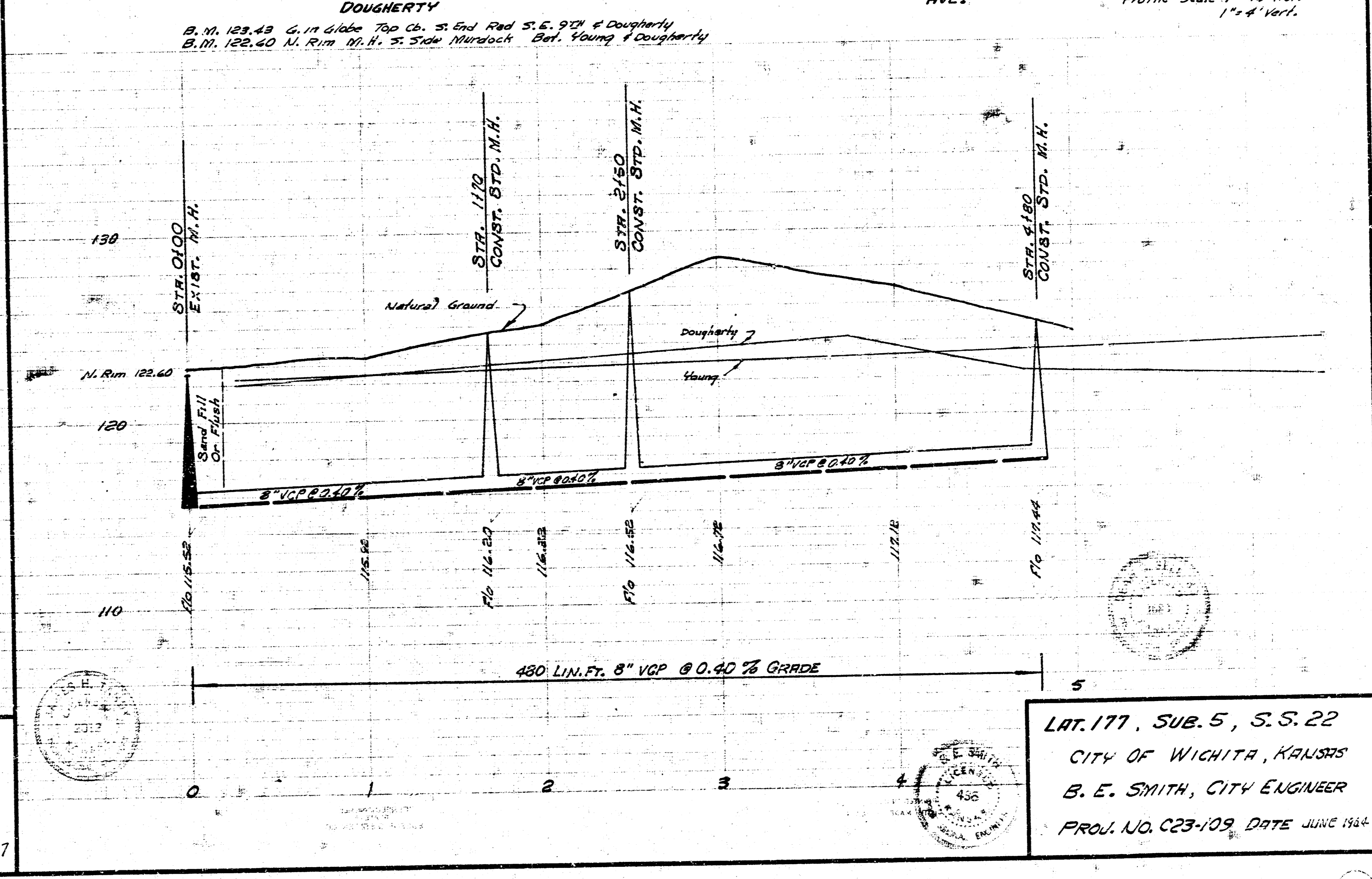
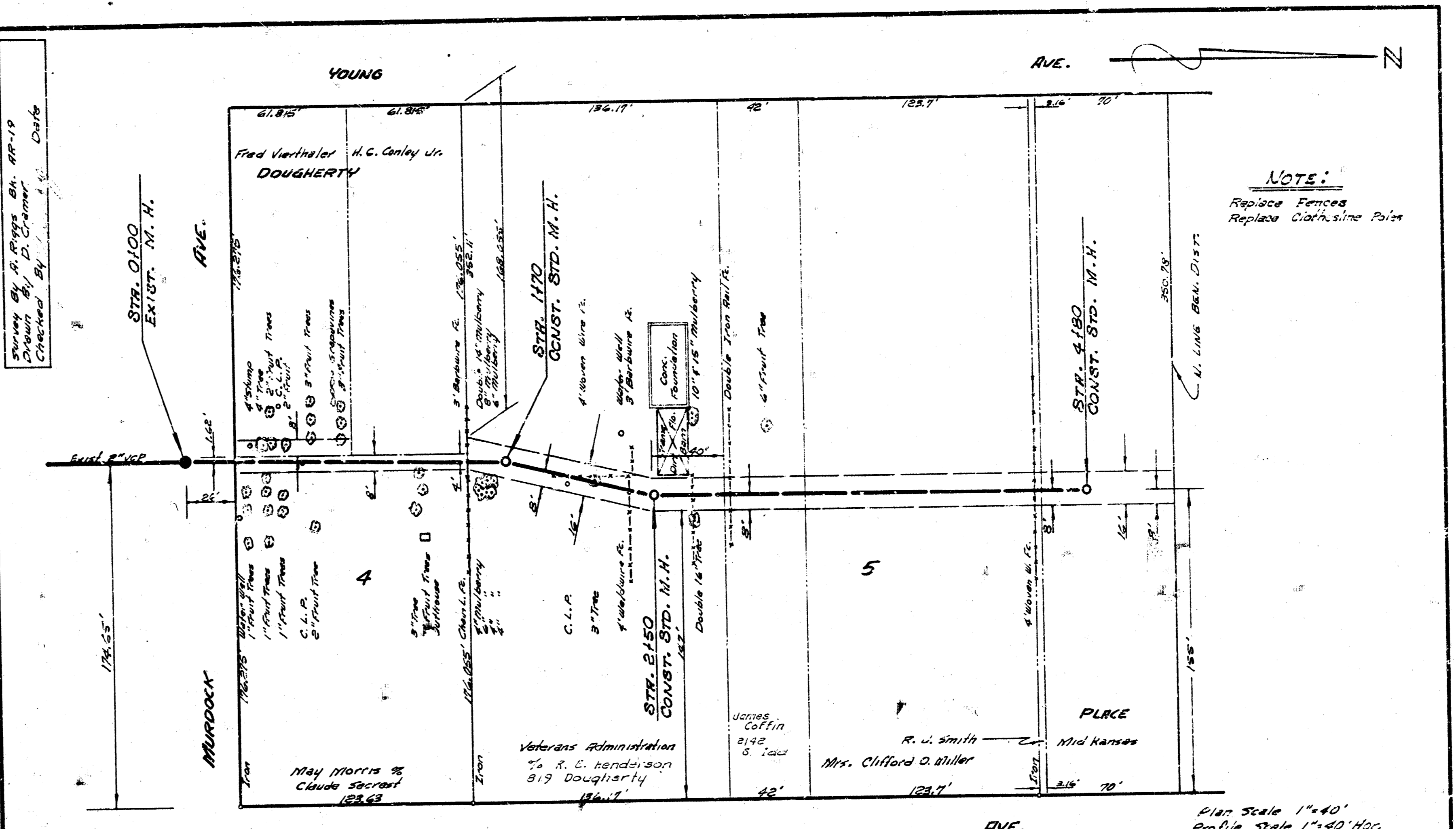


LAT. 8, SUB. 8, S. S. NO. 22
 CITY OF WICHITA, KANSAS
 B. E. SMITH CITY ENGINEER
 PROJ. NO. C23-110 DATE JULY 1967



LAT. 177, SUB. 5, S. S. 22
 CITY OF WICHITA, KANSAS
 B. E. SMITH, CITY ENGINEER
 PROJ. NO. C23-109 DATE JUNE 1964

NOTES:
 Replace Fences
 Replace Cast-iron Poles