

THE CONTRACTOR SHALL BE RESPONSIBLE FOR PRESERVING PROPERTY IRONS. THE CONTRACTOR SHALL BE REQUIRED TO RE-ESTABLISH ANY PROPERTY IRONS WHICH ARE DAMAGED OR DESTROYED BY HIS CONSTRUCTION OPERATIONS. SUCH IRONS SHALL BE RE-ESTABLISHED BY A LICENSED LAND SURVEYOR OR A LICENSED PROFESSIONAL ENGINEER IN ACCORDANCE WITH STATE LAWS.

CAUTION
UNDERGROUND UTILITIES

Please check with K.G. & E. or Southwestern Bell Telephone Co. for Location

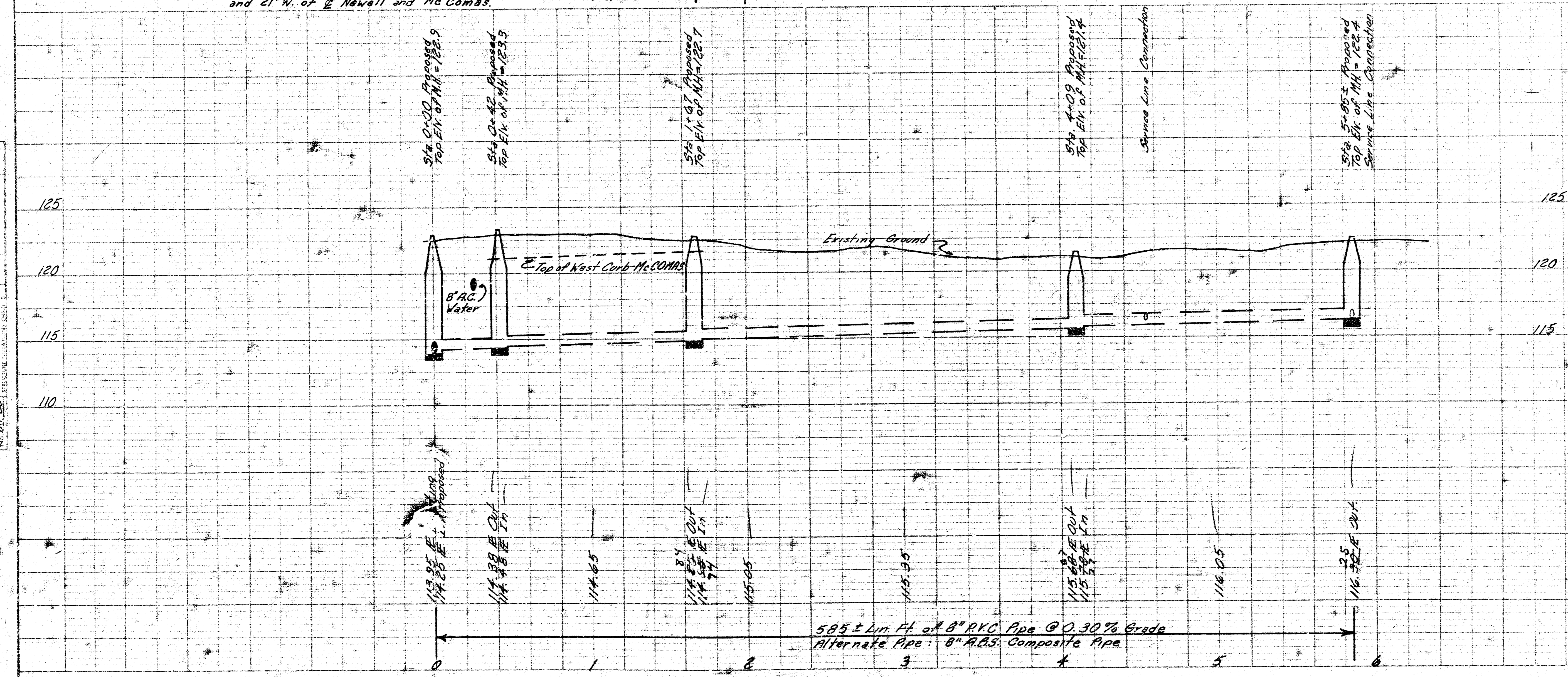
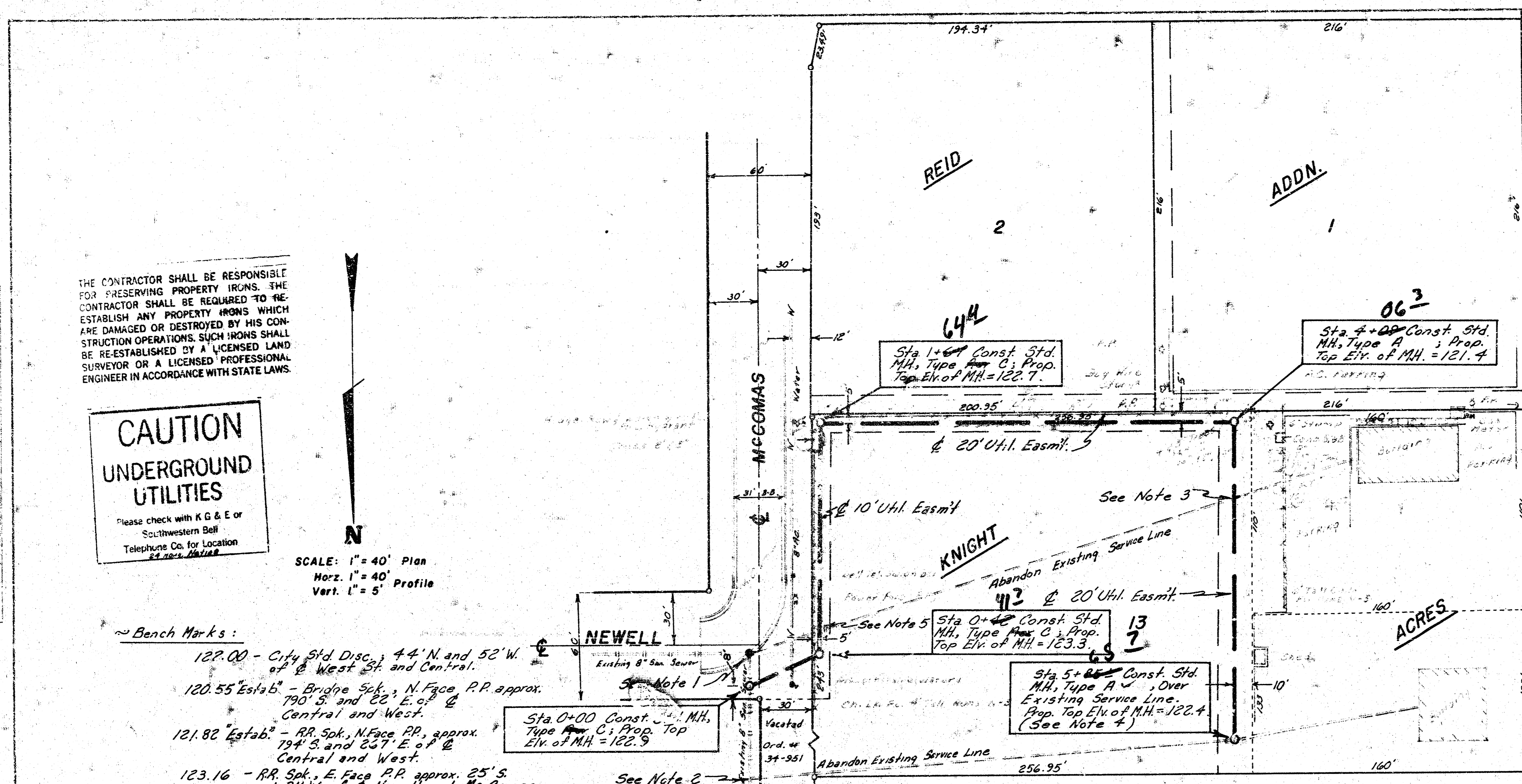
SCALE: 1" = 40' Plan
Horz. 1" = 40' Profile
Vert. 1" = 5' Profile

Bench Marks:

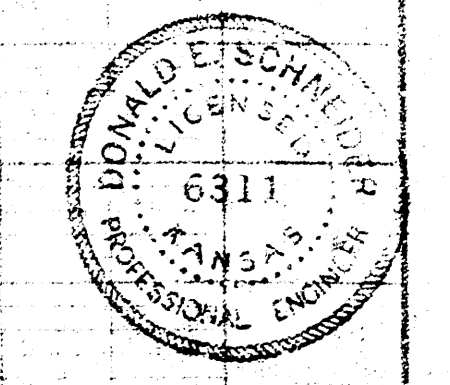
- 122.00 - City Std. Disc., 4.4' N. and 52' W. of W. West St. and Central.
- 120.55 Estab. - Bridge Ssk., N. Face P.P. approx. 790' S. and 22' E. of Central and West.
- 121.82 Estab. - RR. Ssk., N. Face P.P. approx. 794' S. and 227' E. of Central and West.
- 123.16 - RR. Ssk., E. Face P.P. approx. 25' S. and 21' W. of Newell and McComas.

Notes:

- 1) 15' South of Sta. 0+00 at Existing Manhole; Plug and Seal Existing Service Line from West.
- 2) 82' ± North of Sta. 0+00; Disconnect existing Tap; Plug and Seal.
- 3) Sta. 4+52 ±; Connect Service Line (West) to Proposed Sewer; Plug and Seal Service Line (East).
- 4) Sta. 5+85 ±; Connect Service Line (West) to Proposed Manhole; Plug and Seal Service Line (East).
- 5) Sta. 0+55 ±; Plug and Seal Existing Service Line (East and West Sides).
- 6) Excavate Service Lines in Easement Boundaries to Facilitate Connections and Seal-offs.



As Built
1/82
JJ



LAT. 9, MAIN 8, S.S. NO. 22
CITY OF WICHITA, KANSAS
R. W. BRUGGEMAN
DIRECTOR OF ENGINEERING / CITY ENGINEER
PROJ. NO. 466-76-245-80611-000-001
DATE SHEET 1 of 1