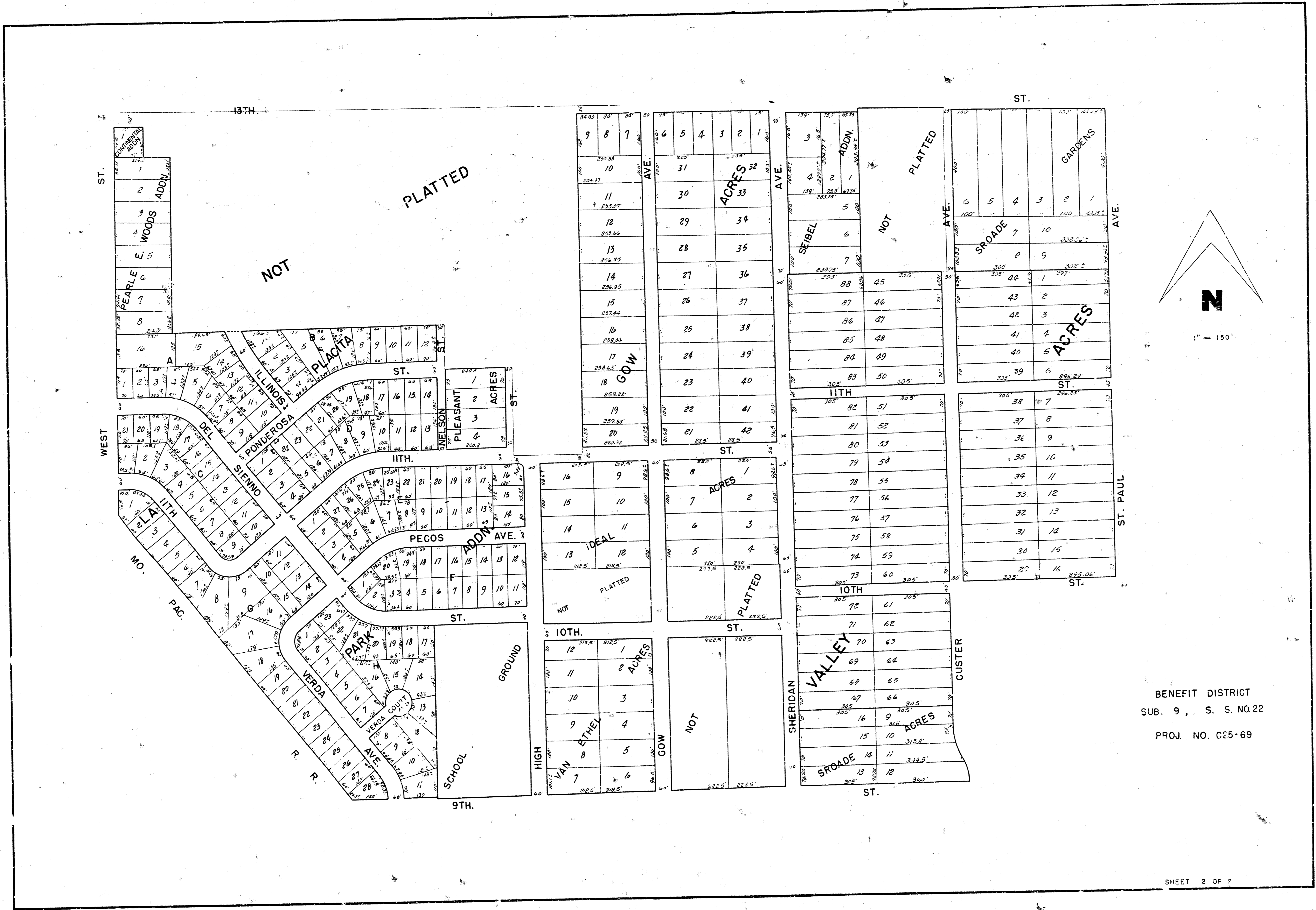


BENEFIT DISTRICT MAP  
 SUB-MAIN 9, S. S. NO. 22  
 CITY OF WICHITA, KANS.  
 B. E. SMITH - CITY ENGINEER  
 PROJECT NO. C 25-69

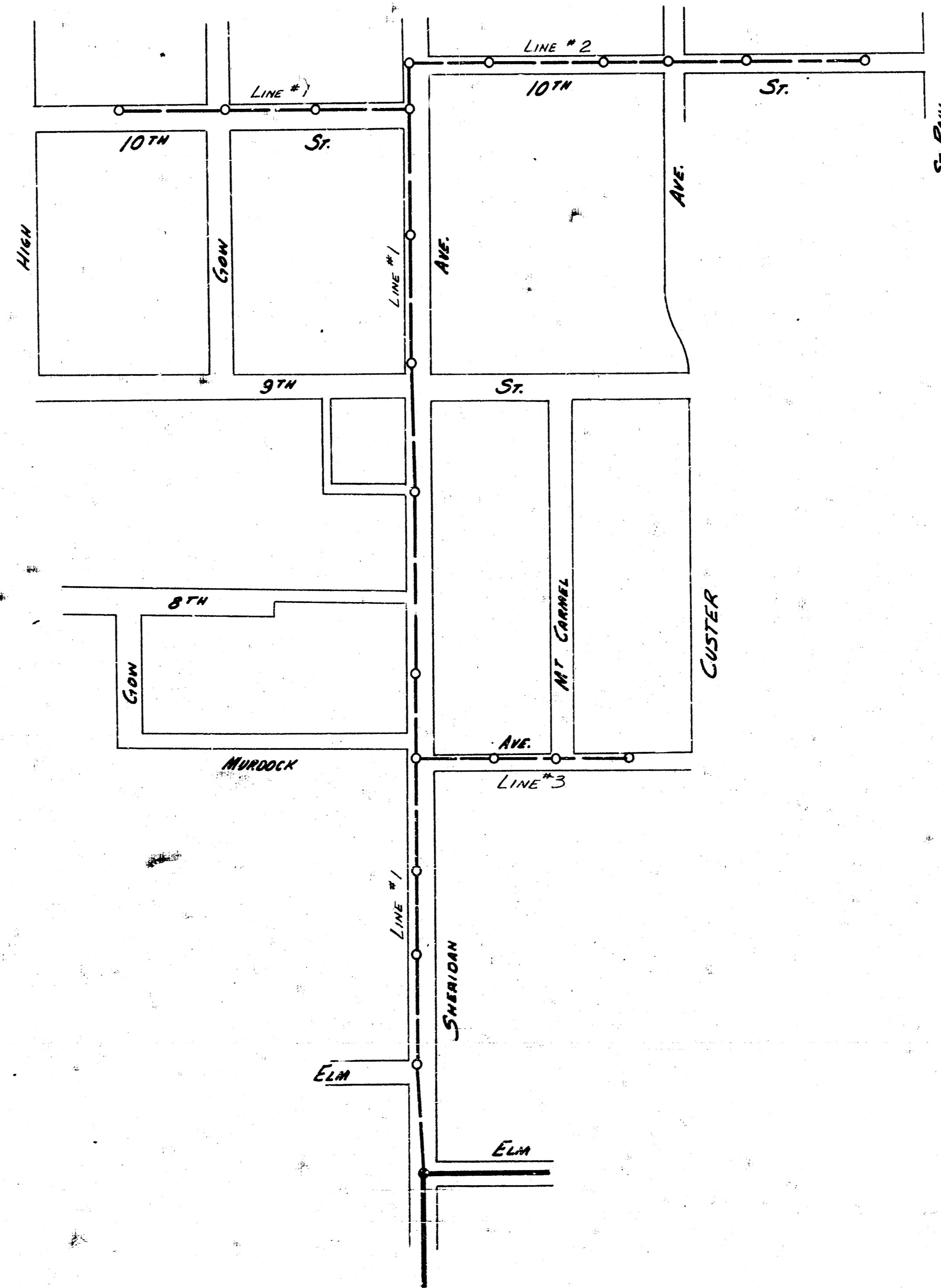
MARCH 1956

OK.  
 B.E.



BENEFIT DISTRICT  
 SUB. 9, S. S. NO. 22  
 PROJ. NO. 025-69

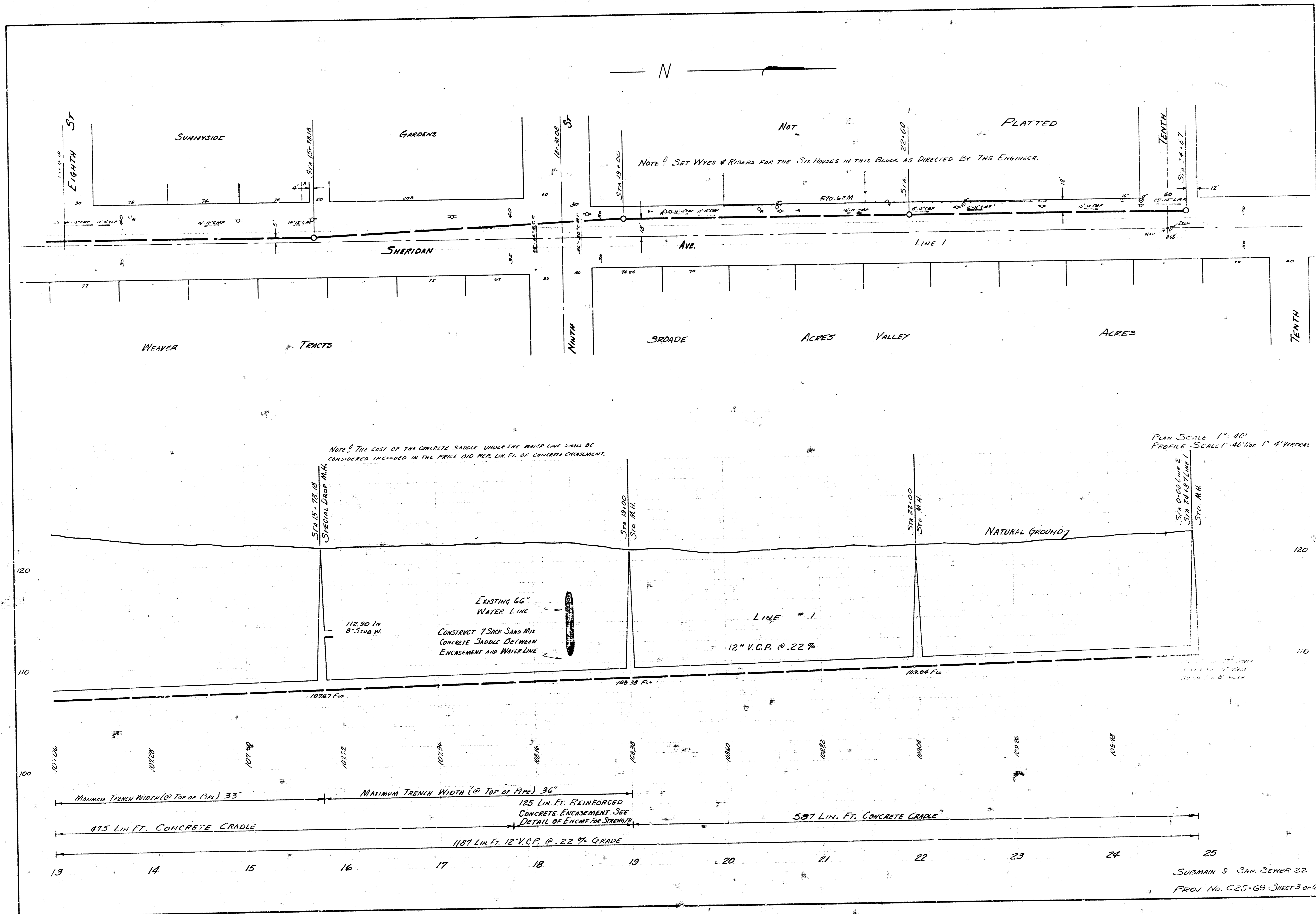
**LOCATION MAP**  
**SUBMAIN NO. 9, SANITARY SEWER NO. 22**  
**CITY OF WICHITA, KANSAS**  
 B.E. SMITH CITY ENGINEER PROJECT NO. C25-69

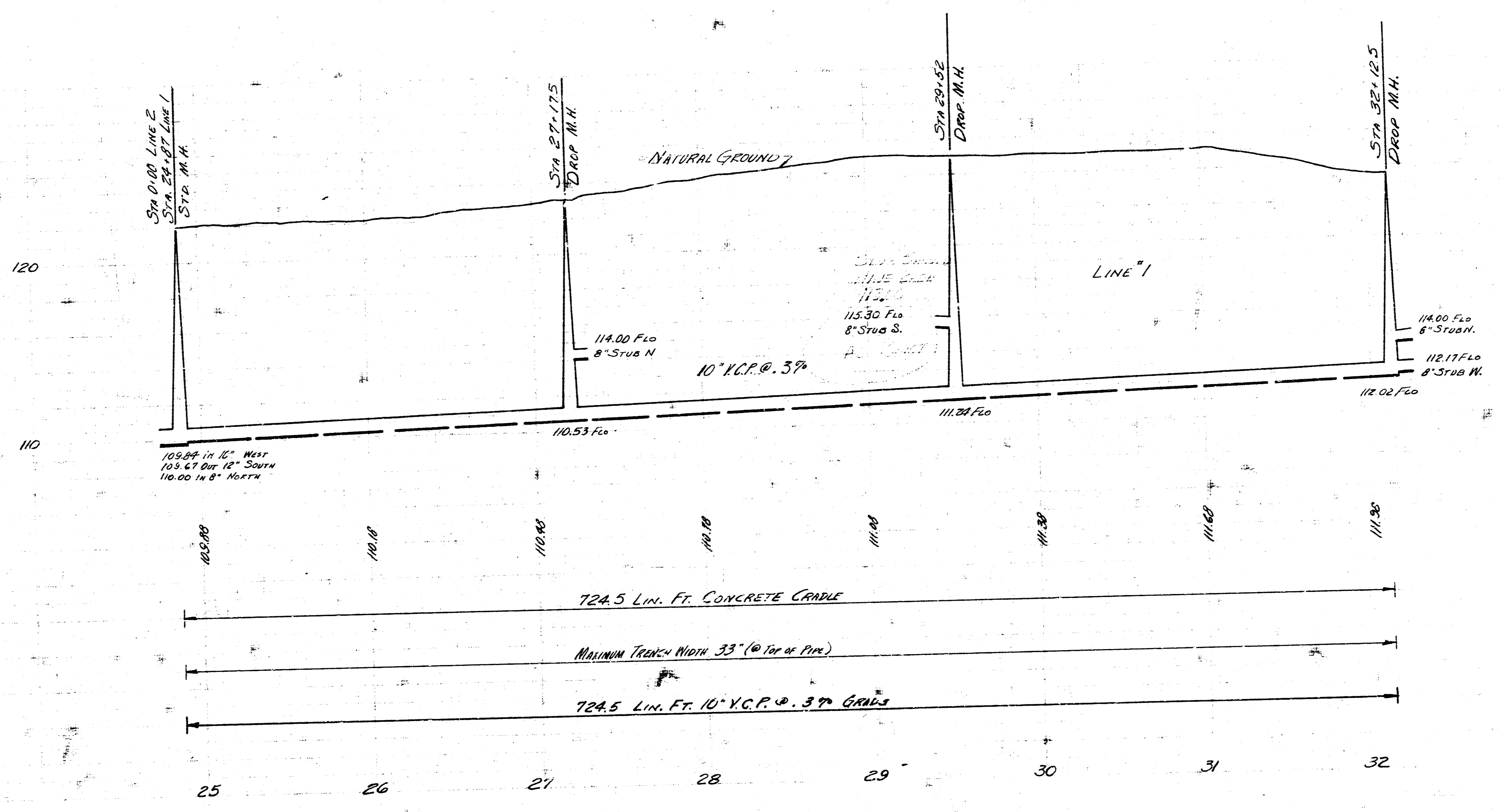
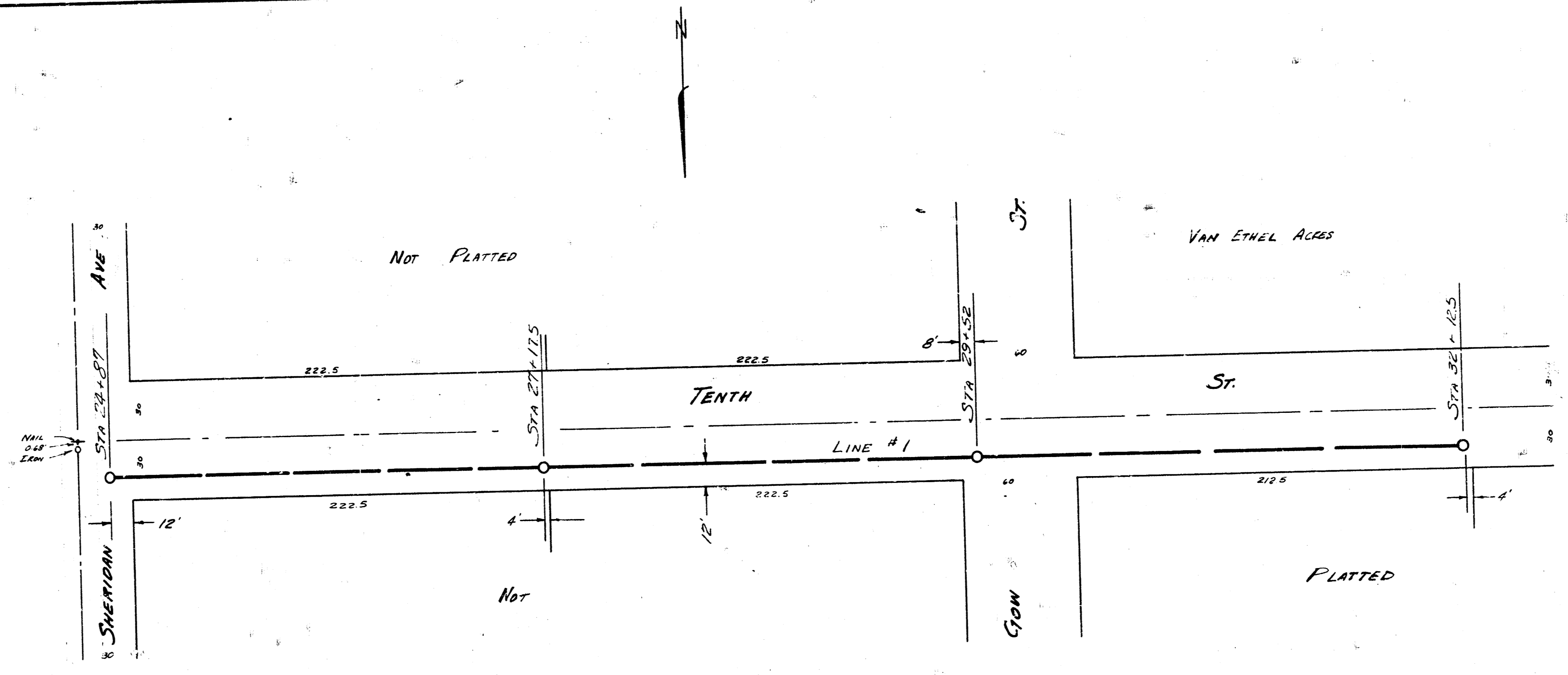


Surveyed by Mason Notation No. 11-22, 11-22  
 Plan D. S. Keller  
 Checked by James P. Smith  
 DATE

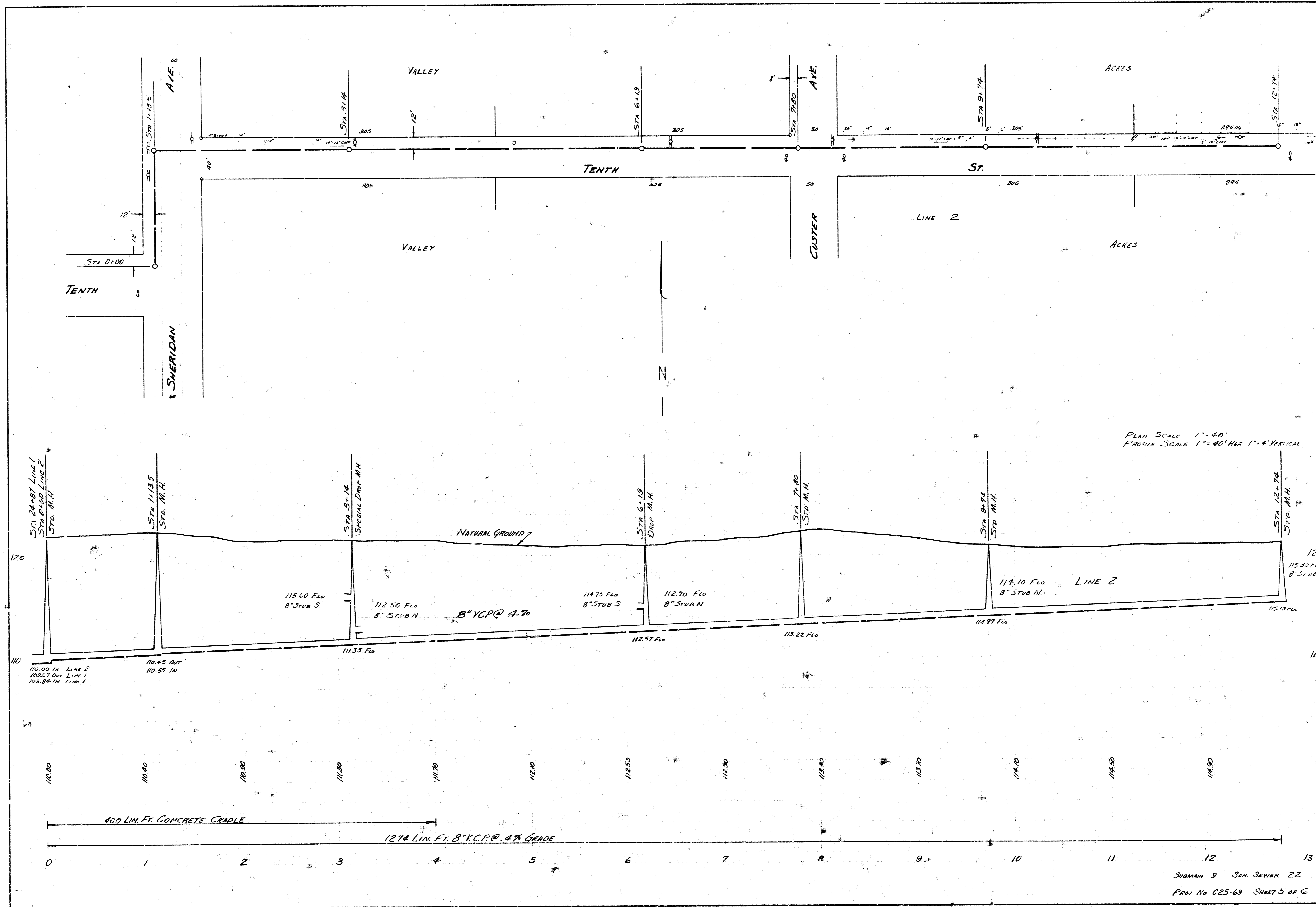
*B.E. Smith*  
 City Engineer  
 11/24/52  
 SUBMAIN 9 SAN SEWER 22  
 PROJ. C25-69 SHEET 1 OF 6

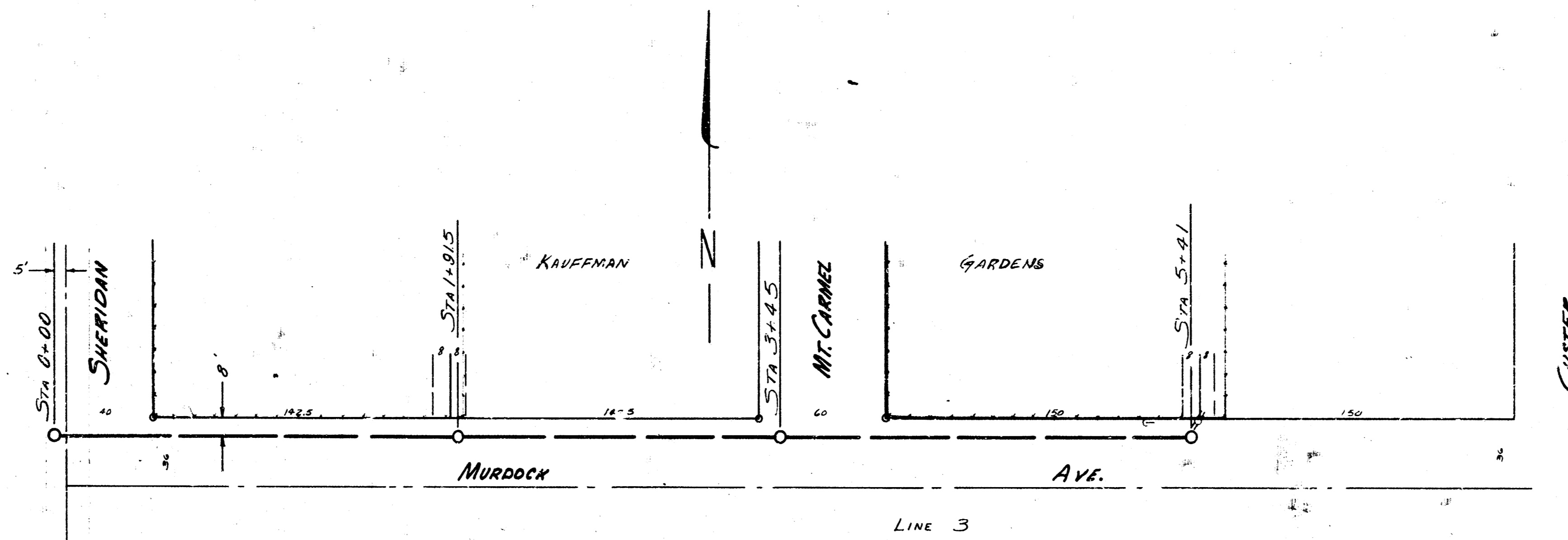




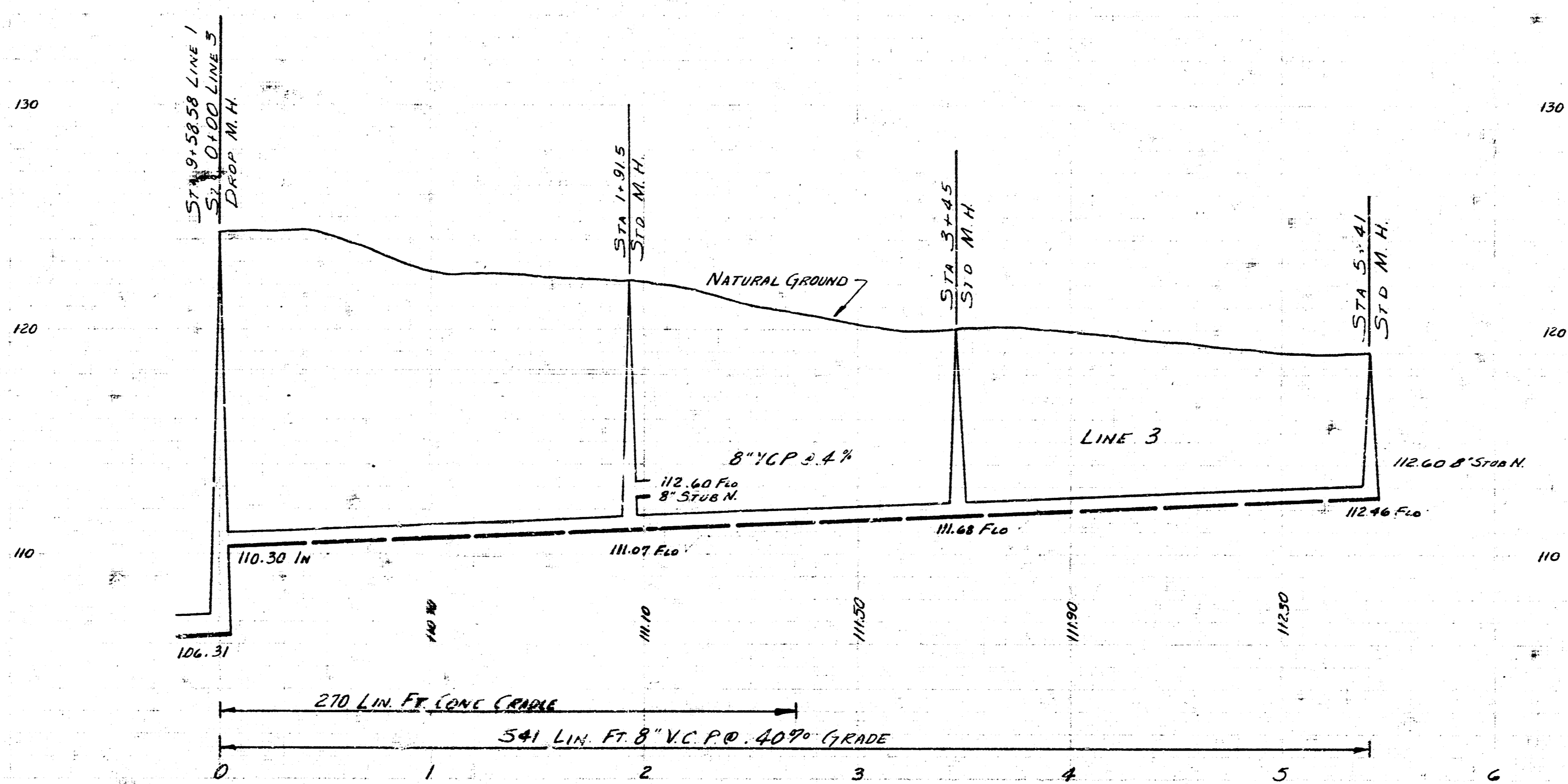


PLAN SCALE 1"=40'  
 PROFILE SCALE 1"=40' HOR. 1"=4' VERTICAL





PLAN SCALE 1"=40'  
 PROFILE SCALE 1"=40' HOR. 1"=3' VERTICAL



SUBMAIN 9 SANITARY SEWER 22  
 PROJ. NO. C25-69 SHEET 6016