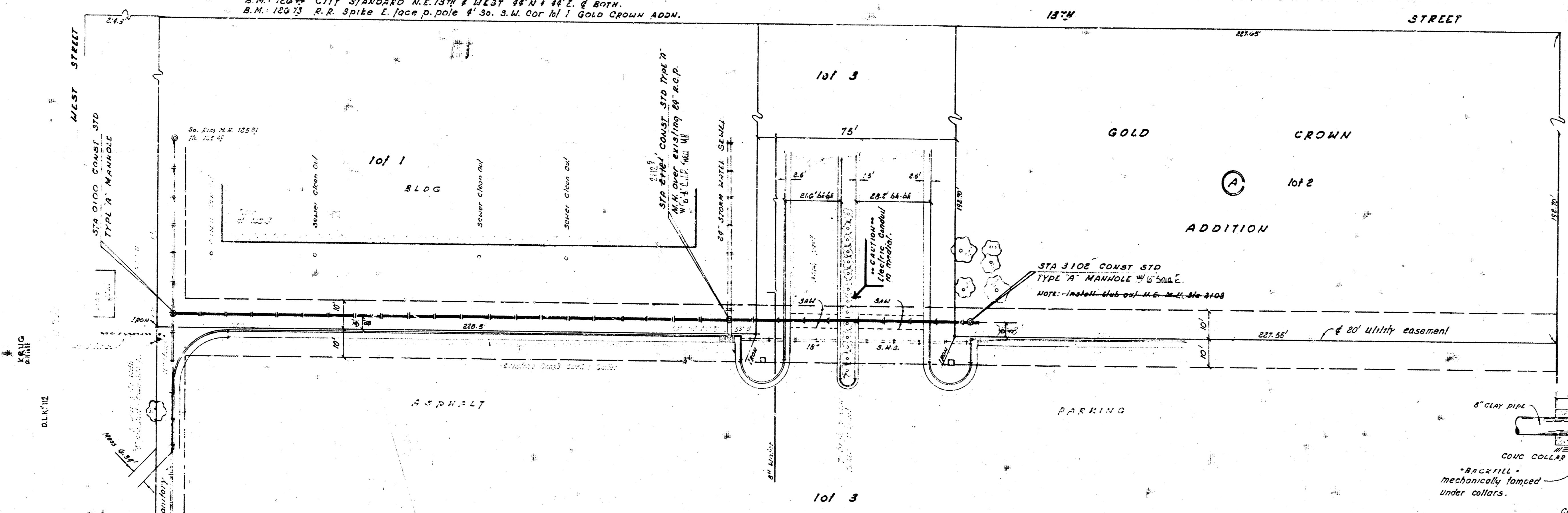
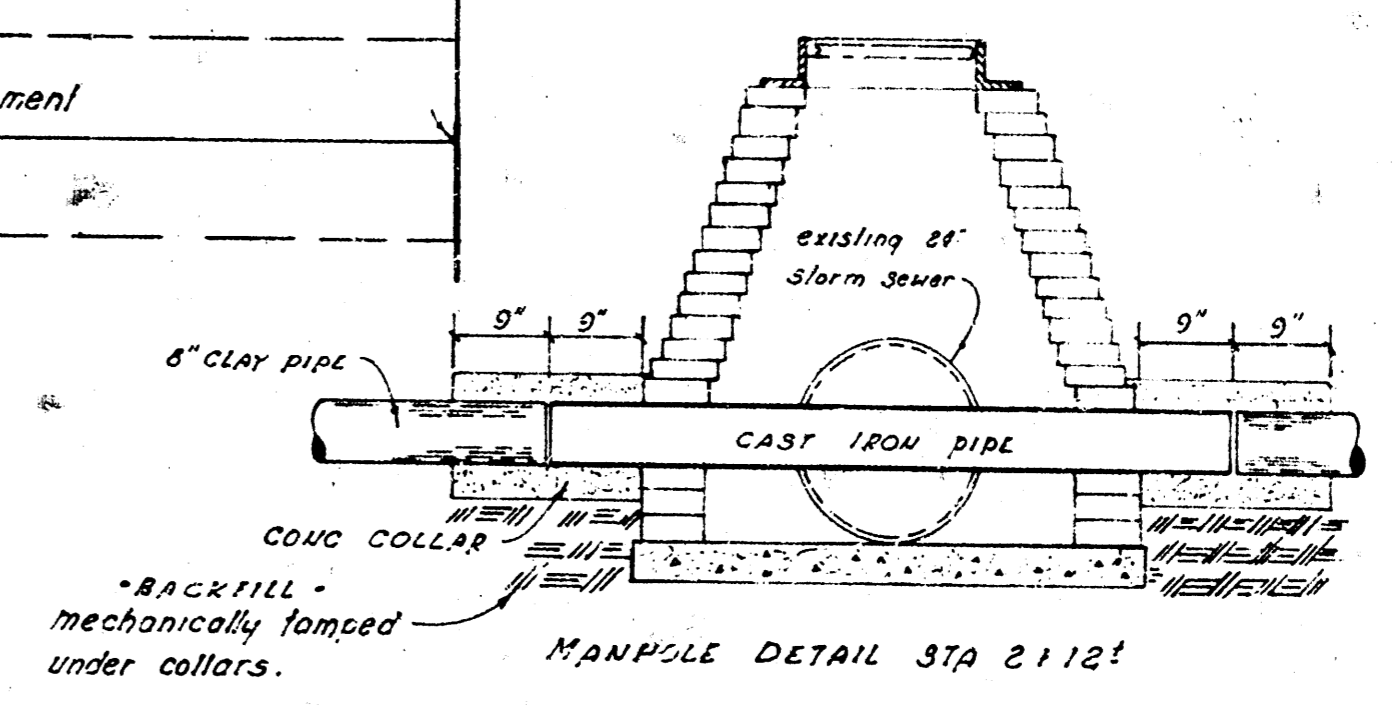


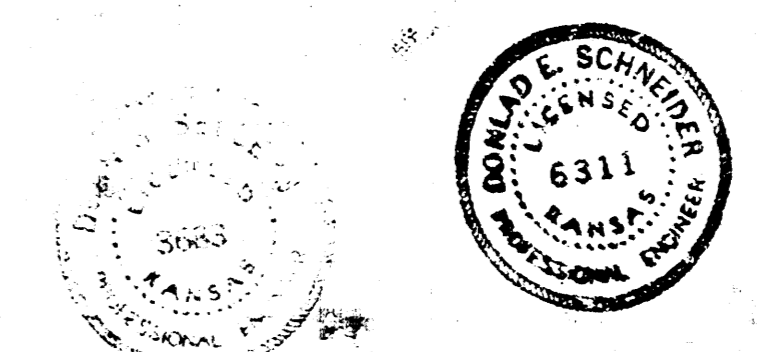
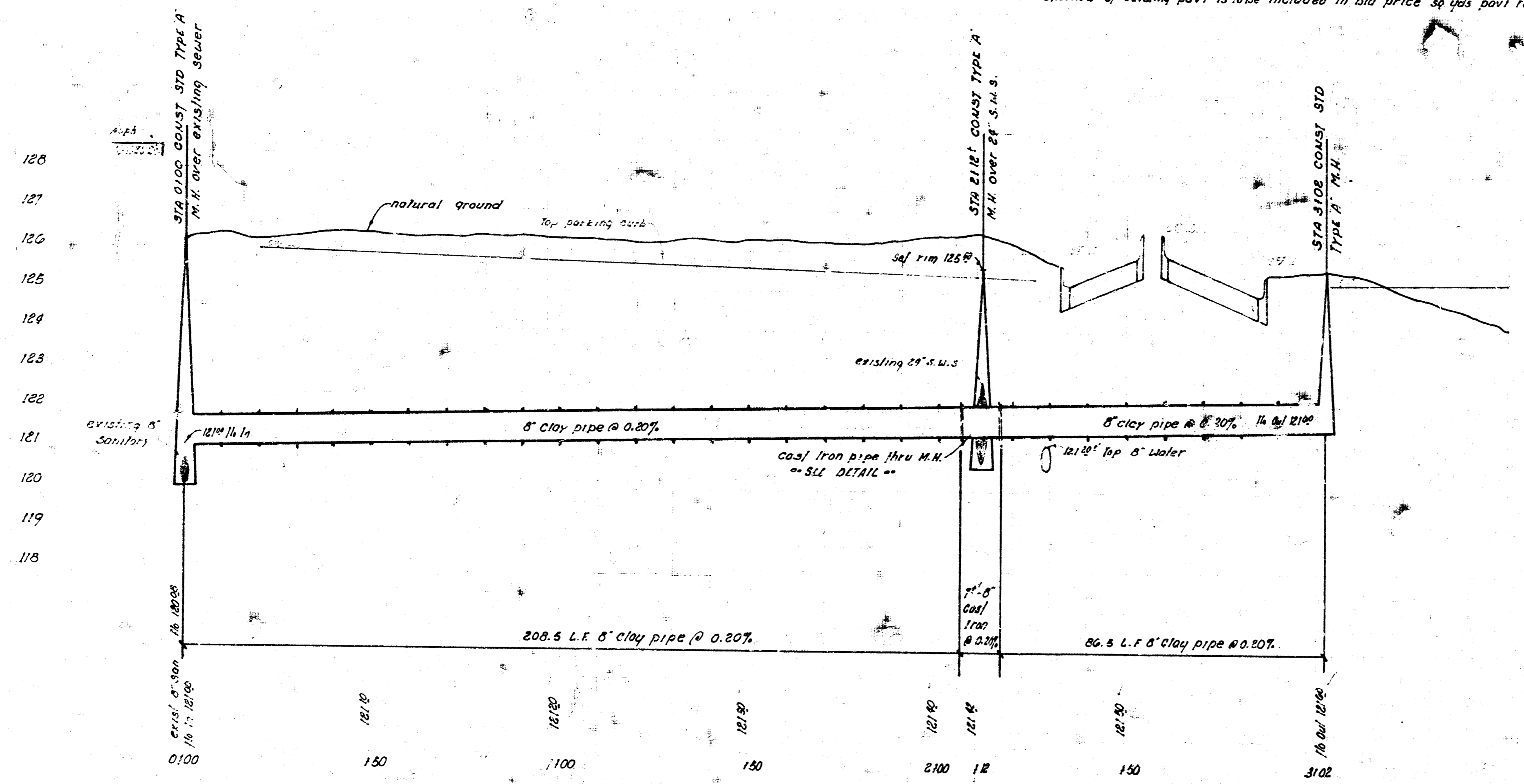
S.M. 126 94 CITY STANDARD N.E. 13TH & WEST 44' N & 44' E. & BOTH.  
 B.M. 126 73 R.R. Spike E. face p. pole 4' 30". S.M. Cor 101 GOLD CROWN ADDN.



PLAN SCALE 1" = 20'  
 PROFILE 1" = 20' HORIZ  
 1" = 2' VERT



NOTE: The exact limits of combined curb & gutter removed to be consistent with existing joint locations and determined by the engineer. Existing base pavement is to be sawed and matched. Sawing of existing pavl is to be included in bid price so vps pavl removed & replaced.



AS SHOWN FROM FINAL MEASUREMENTS OF S.S. 22.  
**LATERAL 28, MAIN 9, S.S. # 22.**  
 CITY OF NICHITA, KANSAS  
 R. W. LINN CITY ENGINEER  
 DATE Sept. 1922 PROJ. M. DBKL 572043