

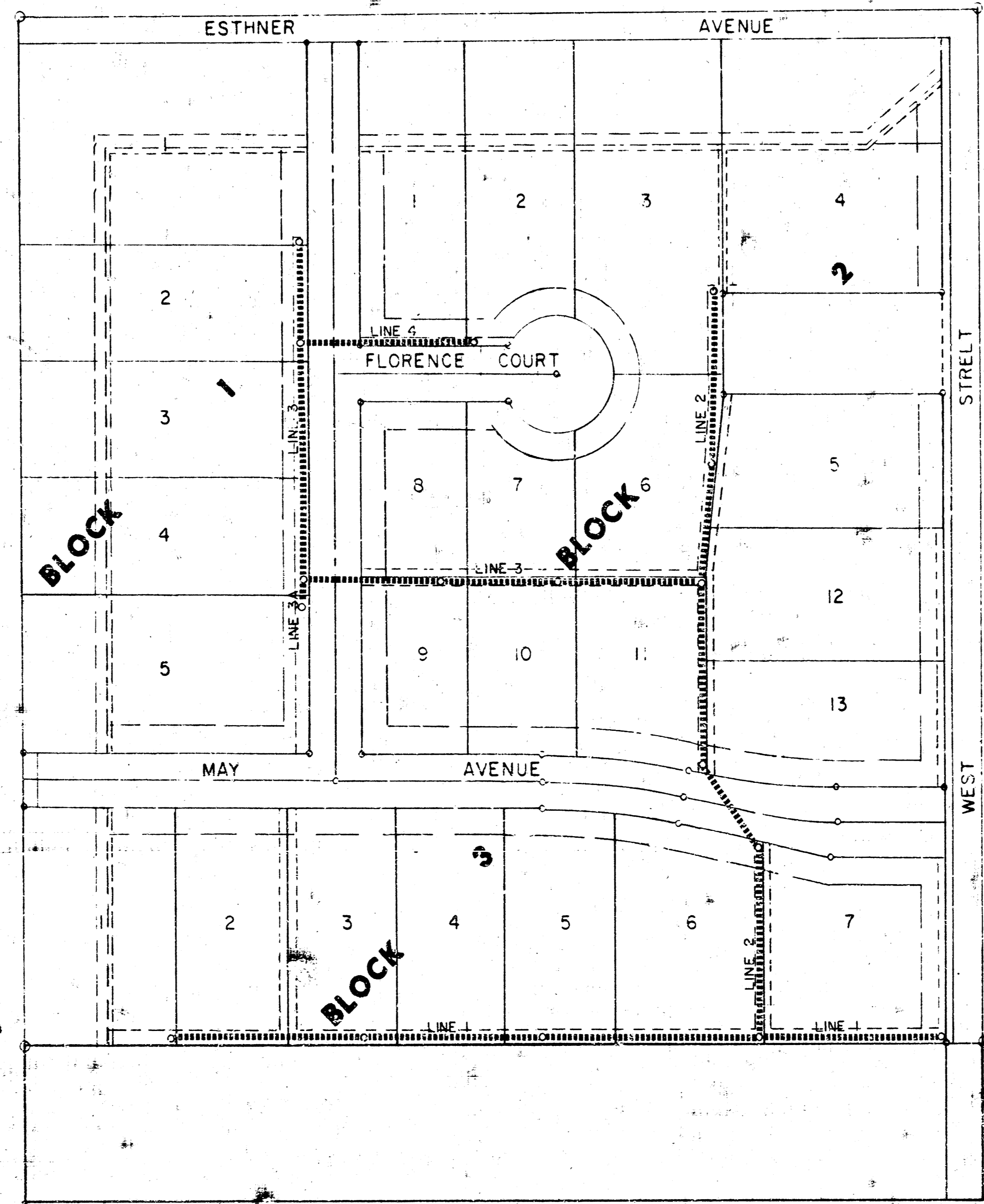
# LATERAL 8, MAIN 14, S. S. NO. 22

PROJECT NO.  
468-76-245-80694-000-000-001

CITY OF WICHITA, KANSAS  
R.W. LINN CITY ENGINEER

NOTE: FIELD ENGINEER SHALL SET TOPS OF MANHOLES TO MATCH PROPOSED FINISHED GRADE AS DETERMINED BY THE DEVELOPER. RISERS AND ADDITIONAL SUBS SHALL BE INSTALLED ON THIS PROJECT TO SERVE INDIVIDUAL LOTS WHEN ORDERED BY THE FIELD ENGINEER. RISER CONSTRUCTION SHALL CONFORM TO THE REQUIREMENTS AS SHOWN ON STANDARD RISER DETAIL SHEET. LOCATIONS OF THE ENDS OF THE RISERS SHALL BE MARKED BY FASTENING GREEN PLASTIC COLORED TAPE TO THE END OF THE RISER AND BROUGHT TO THE GROUND SURFACE AS THE EXCAVATION IS BACKFILLED SUCH THAT THE COLORED TAPE WILL BE VISIBLE WHEN THE PROJECT IS COMPLETED. ALL RISERS SHALL BE CONSTRUCTED USING S.D.R. 35" A.P.S. PIPE. ELEVATIONS OF SUBS AND TOPS OF RISERS SHALL BE SUCH THAT WILL FACILITATE CONNECTION OF BASEMENT DRAINS WHEN THESE LOTS ARE DEVELOPED.

NW Corner SE 1/4  
NE 1/4 Section  
35-27-A

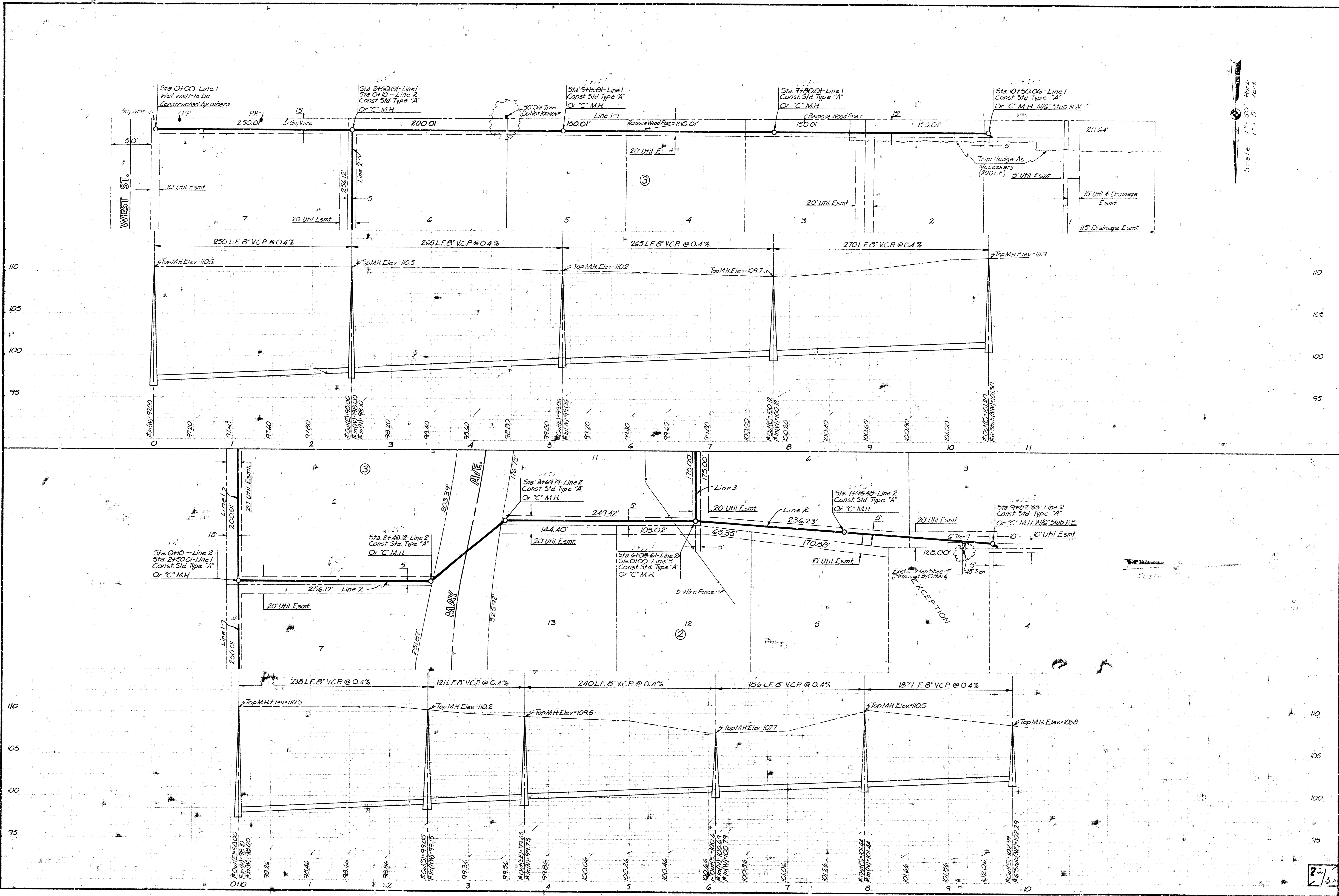


SW Corner SE 1/4  
NE 1/4 Section  
35-27-A

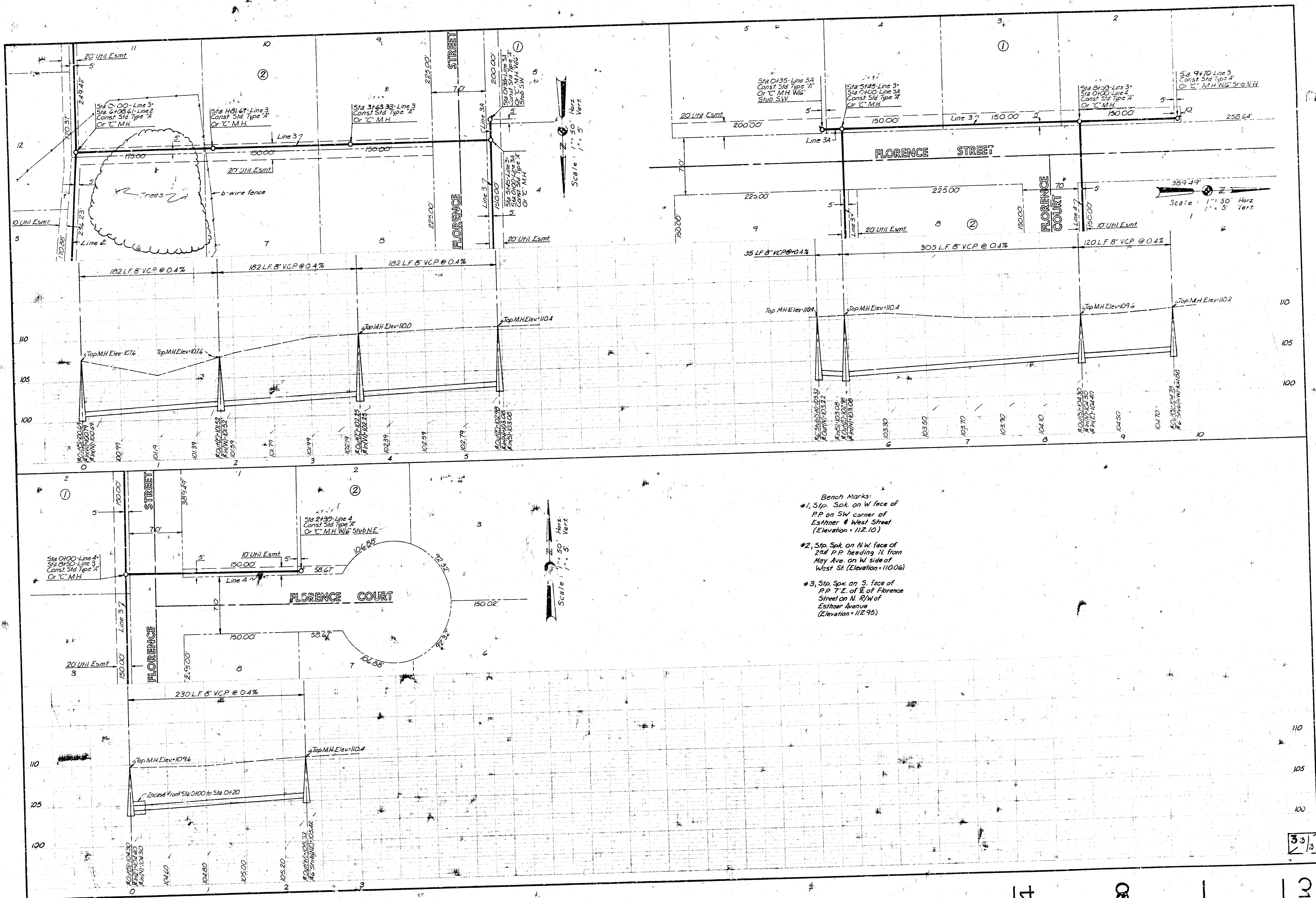
SE Corner SE 1/4  
NE 1/4 Section  
35-27-A



INDEX TO DRAWINGS	
SHEET NO.	DESCRIPTION
1	TITLE SHEET
2	LINE 1, 2
3	LINE 3, 4
4-5	SEWER APPURTENANCES



Scale: 1/4" = 1'-0"  
 Date: 11/20/00  
 Author: [illegible]  
 Verifier: [illegible]



- Bench Marks:**
- #1, Stp. Spk. on W face of P.P. on SW corner of Esthler & West Street (Elevation = 112.10)
  - #2, Stp. Spk. on NW face of 2nd P.P. heading N. from May Ave. on W side of West St. (Elevation = 110.06)
  - #3, Stp. Spk. on S. face of P.P. 71.6 of E. of Florence Street on N. R/W of Esthler Avenue (Elevation = 112.95)