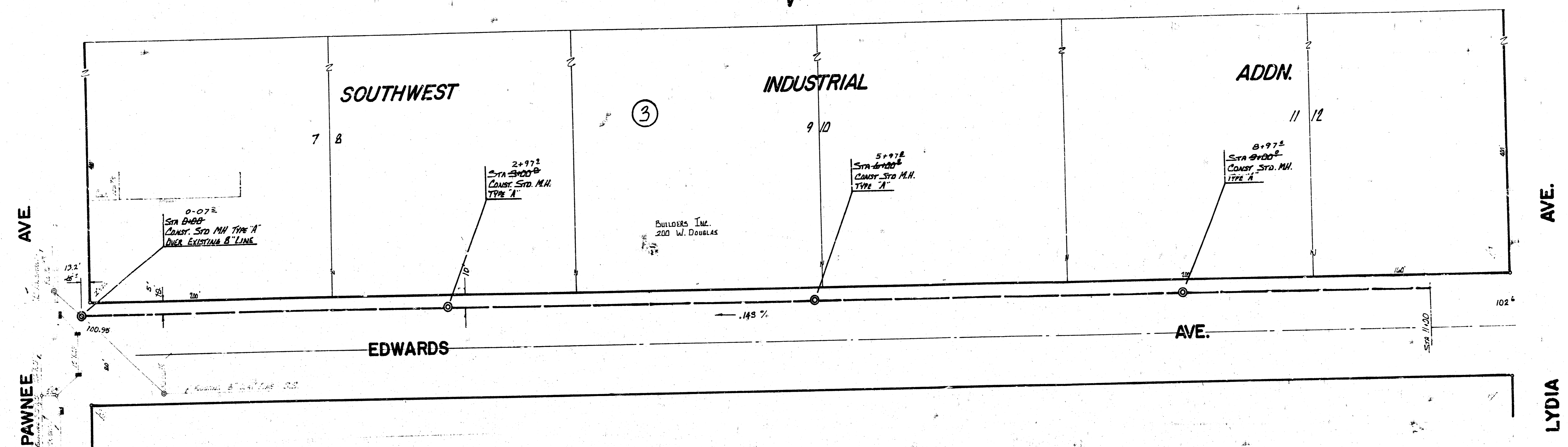


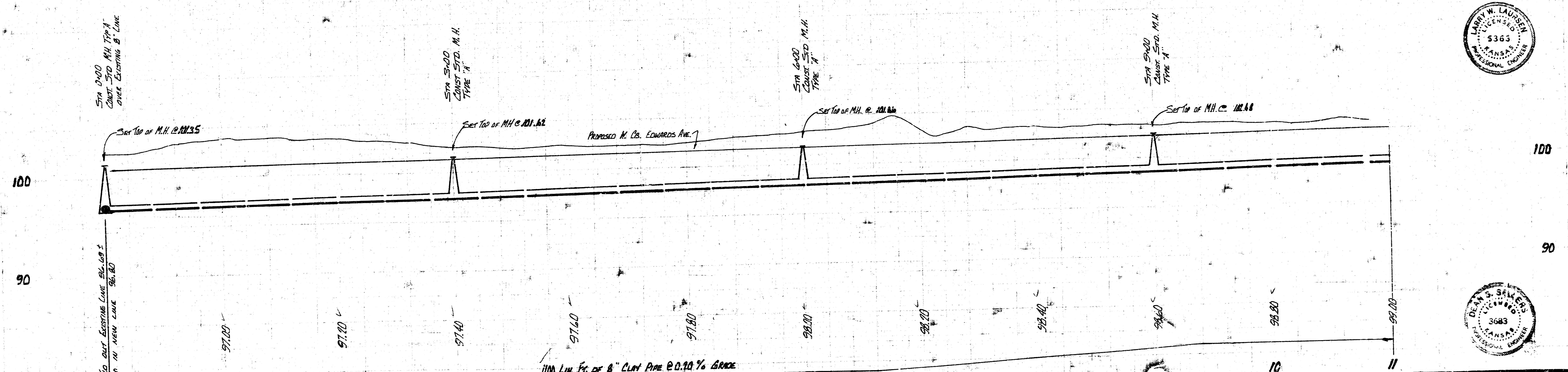
BM 101.63 R.R. SPIKE N. FACE P.P. S. SIDE PAWNEE 15' E OF EL EDWARDS.



NOTE: ALL EXCESS MATERIAL EXCAVATED FROM TRENCH FOR SEWER SHALL BE SPREAD OVER THE ROAD TO PROVIDE ADDITIONAL COVER.

NOTE: MINIMUM COVER OF 2.5' TO BE MAINTAINED THROUGHOUT PROJECT.

PLAN SCALE 1"=40'  
 PROFILE SCALE 1"=4' HORIZ.  
 1"=5' VERT.



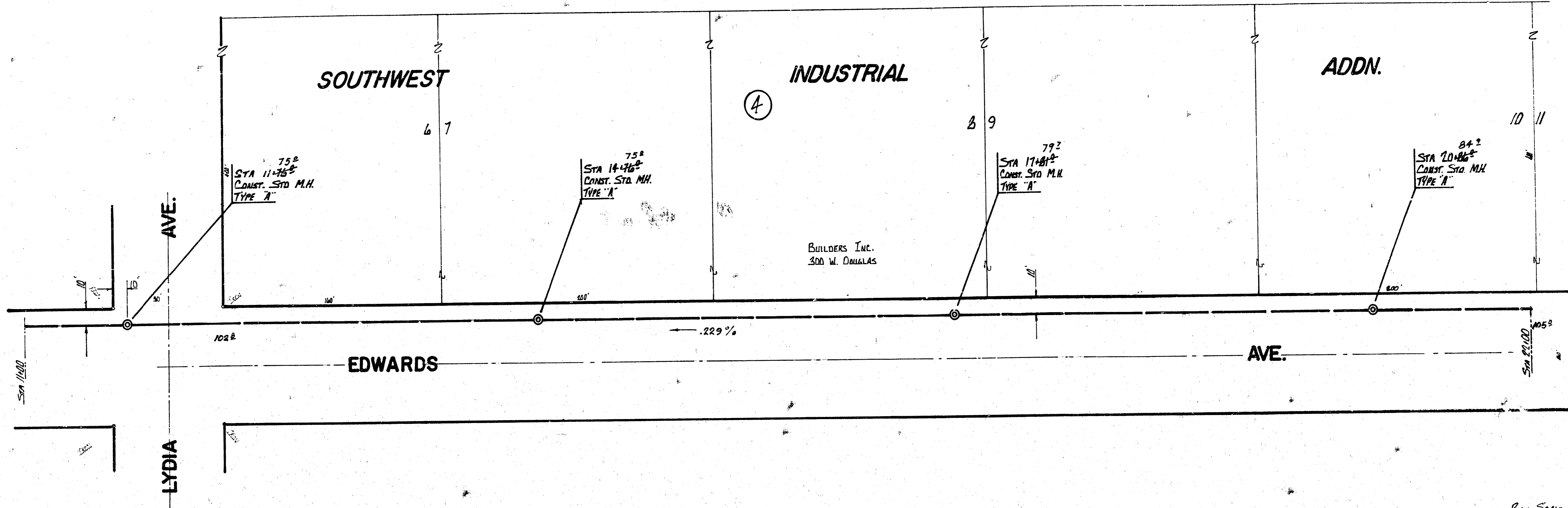
LAT 5, MAIN 16, S.S. No. 22  
 CITY OF WICHITA, KANSAS  
 R.W. LINN CITY ENGINEER  
 DATE: JAN. 1973 SHEET 1 OF 3  
 PROJECT No. DBKL 3720 55

"As Built" Final Meas. 55" x 12" J.K.

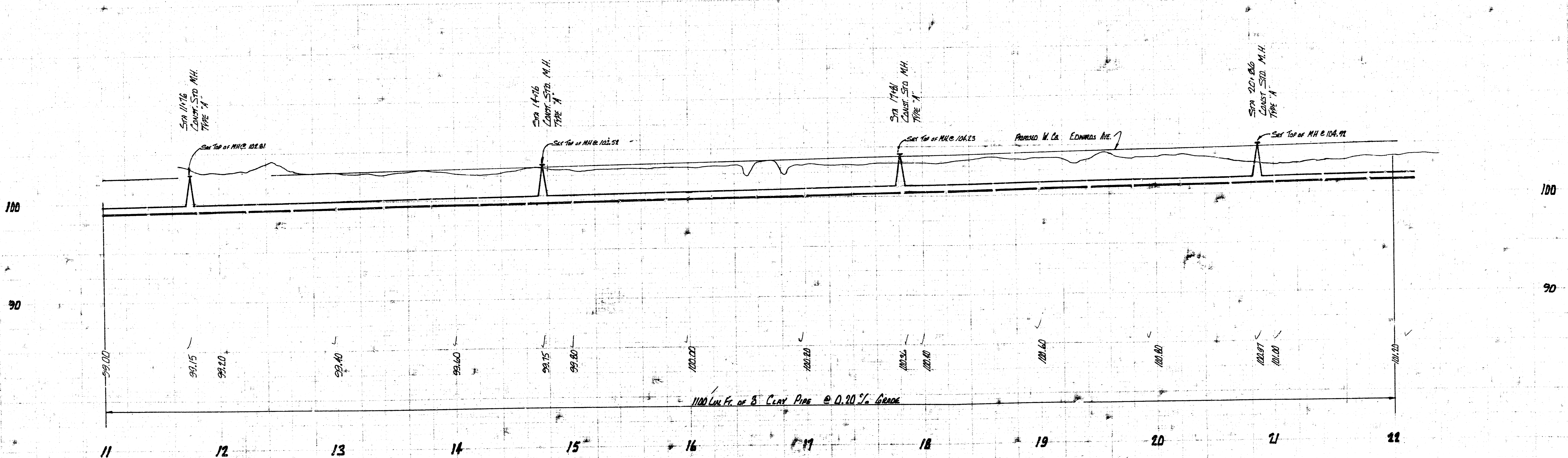
10 sets - Eng.  
 10 sets - Water



BM 102.07 - City Standard 44° S. + 52° E. of C. PINEE + MERIDIAN

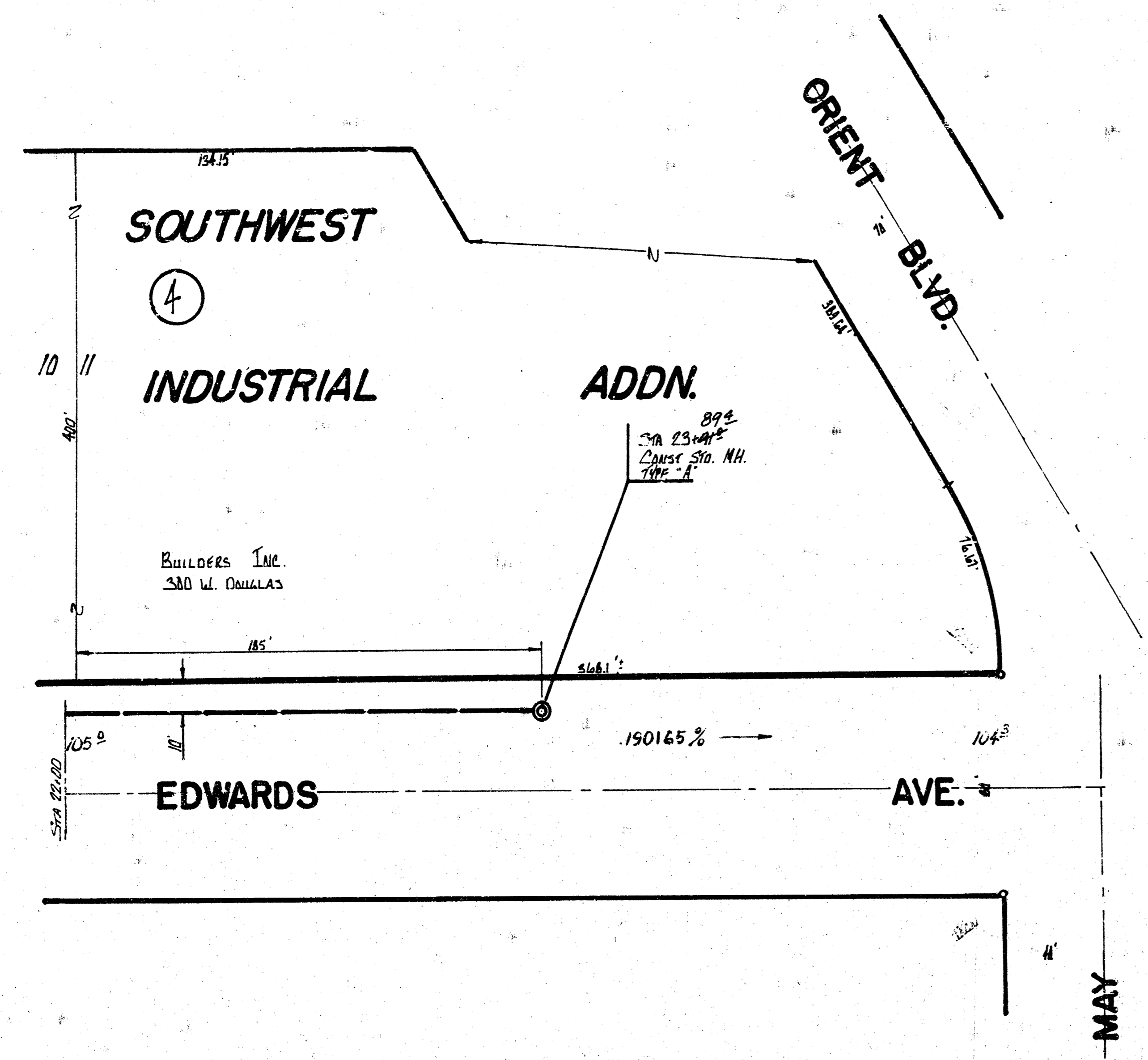


PLAN SCALE 1"=40'  
PROFILE SCALE 1"=20' HORIZ.  
1"=5' VERT.

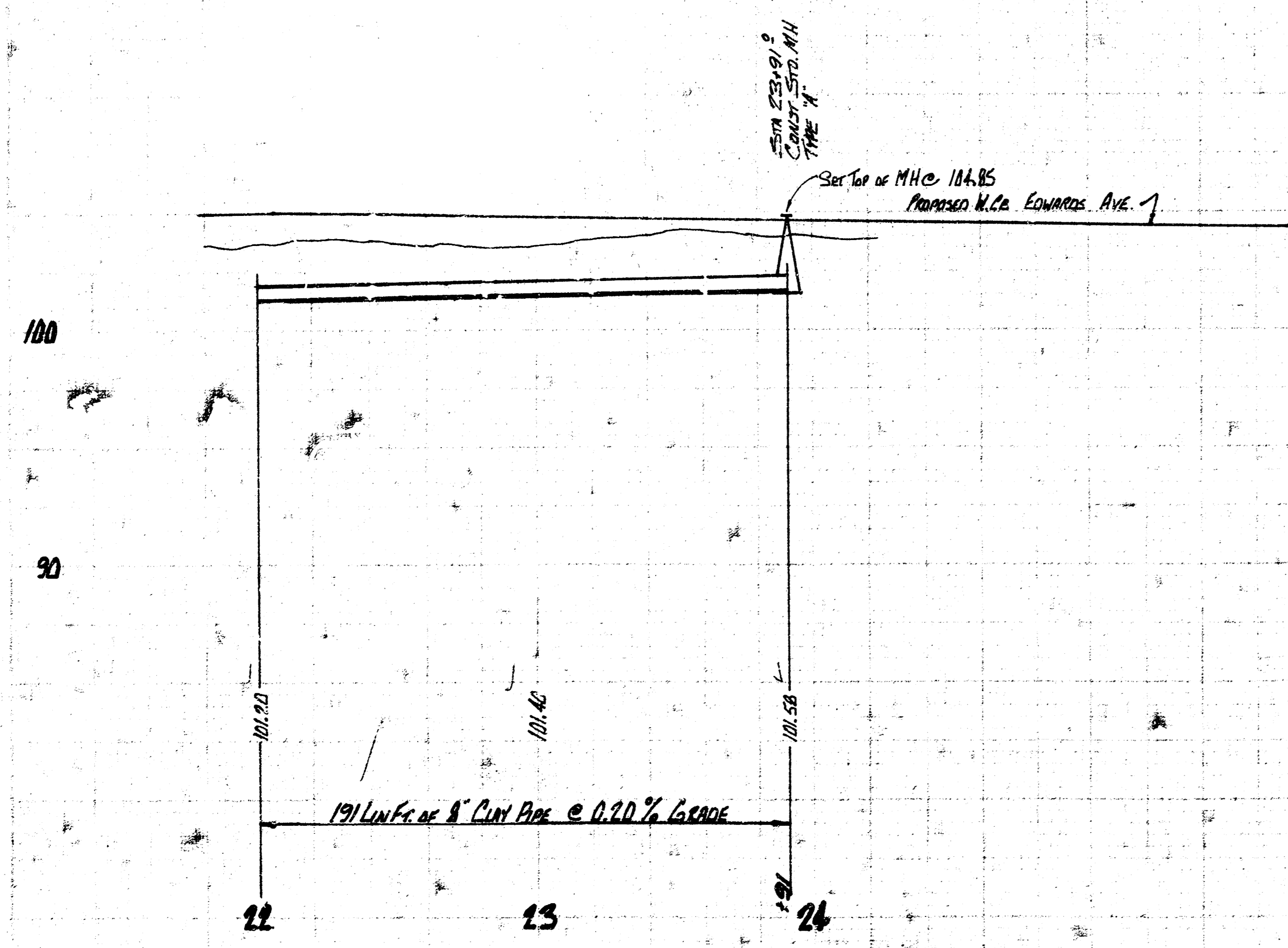


LAT 5, MAIN 16, S.S. No 22  
 PROJECT No DBXLS72055 SHEET 2 OF 3

SM 105.15 R.R. SPIKE S-SIDE W.P. S-SIDE MAY 125' E of EL EDWARDS



PLAN SCALE 1"=40'  
PROFILE SCALE 1"=40' HORIZ.  
1"=5' VERT.



LAT 5, MAIN 16, S.S. No 22  
 Project No. DBK157055 SHEET 3 OF 3  
 15