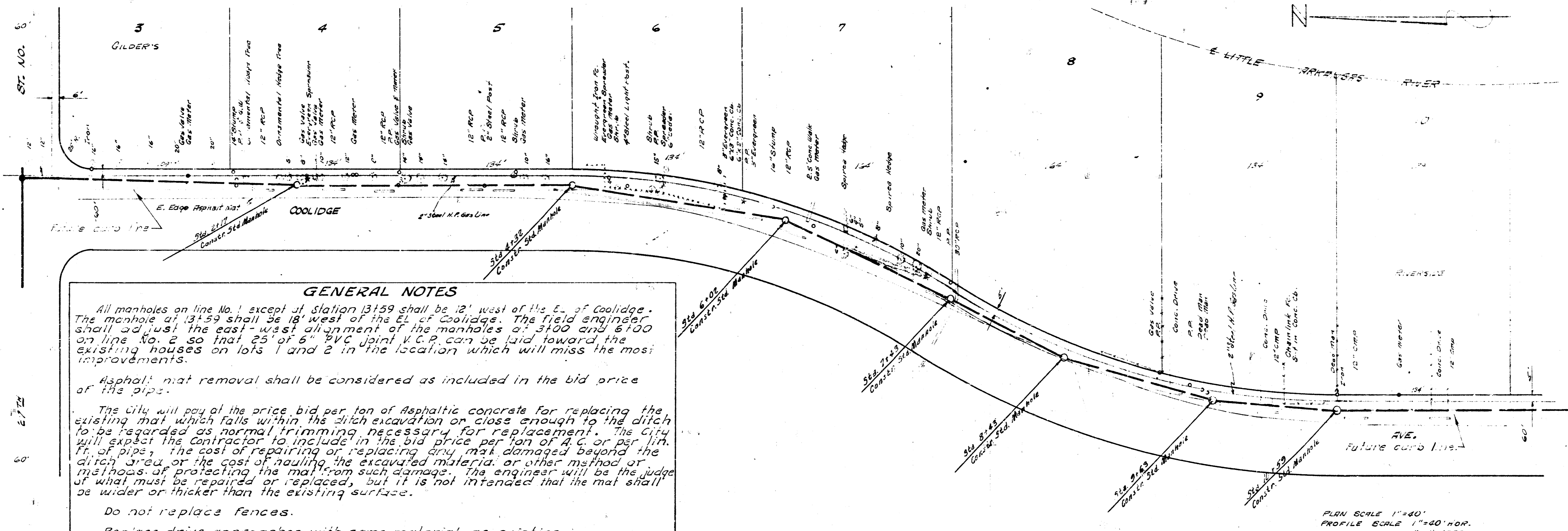


Survey by G. Young, Book 2117 of 2007
Drawn by D. Vincent & Sons
Checked by



GENERAL NOTES

All manholes on line No. 1 except at station 13159 shall be 12' west of the E. of Coolidge. The manhole at 13159 shall be 18' west of the E. of Coolidge. The field engineer shall set the east-west alignment of the manholes at 3100 and 3100 on line No. 2 so that 25' of 6" PVC Joint V.C.P. can be laid toward the existing houses on lots 1 and 2 in the location which will miss the most improvements.

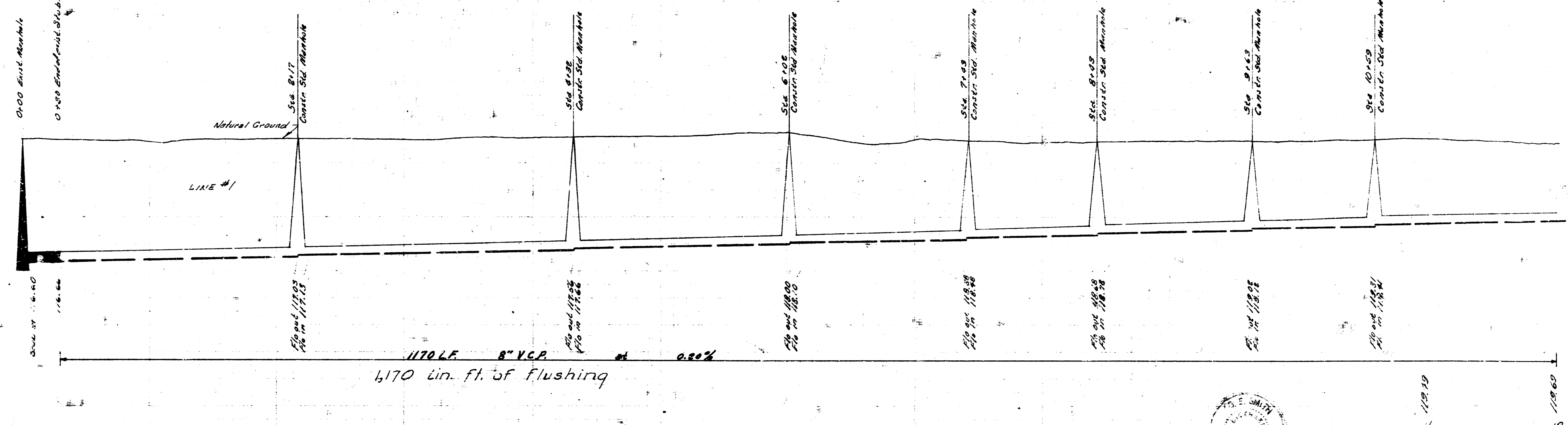
Asphalt mat removal shall be considered as included in the bid price of the pipe.

The City will pay the price bid per ton of Asphaltic concrete for replacing the existing mat which falls within the ditch excavation or cross enough to the ditch to be regarded as normal trimming necessary for replacement. The City will expect the contractor to include in the bid price per ton of A.C. or per lin. ft. of pipe, the cost of repairing or replacing any mat damaged beyond the ditch area or the cost of hauling the excavated material or other method or methods of protecting the mat from such damage. The engineer will be the judge of what must be repaired or replaced, but it is not intended that the mat shall be wider or thicker than the existing surface.

Do not replace fences.

Replace drive approaches with same material as existing.

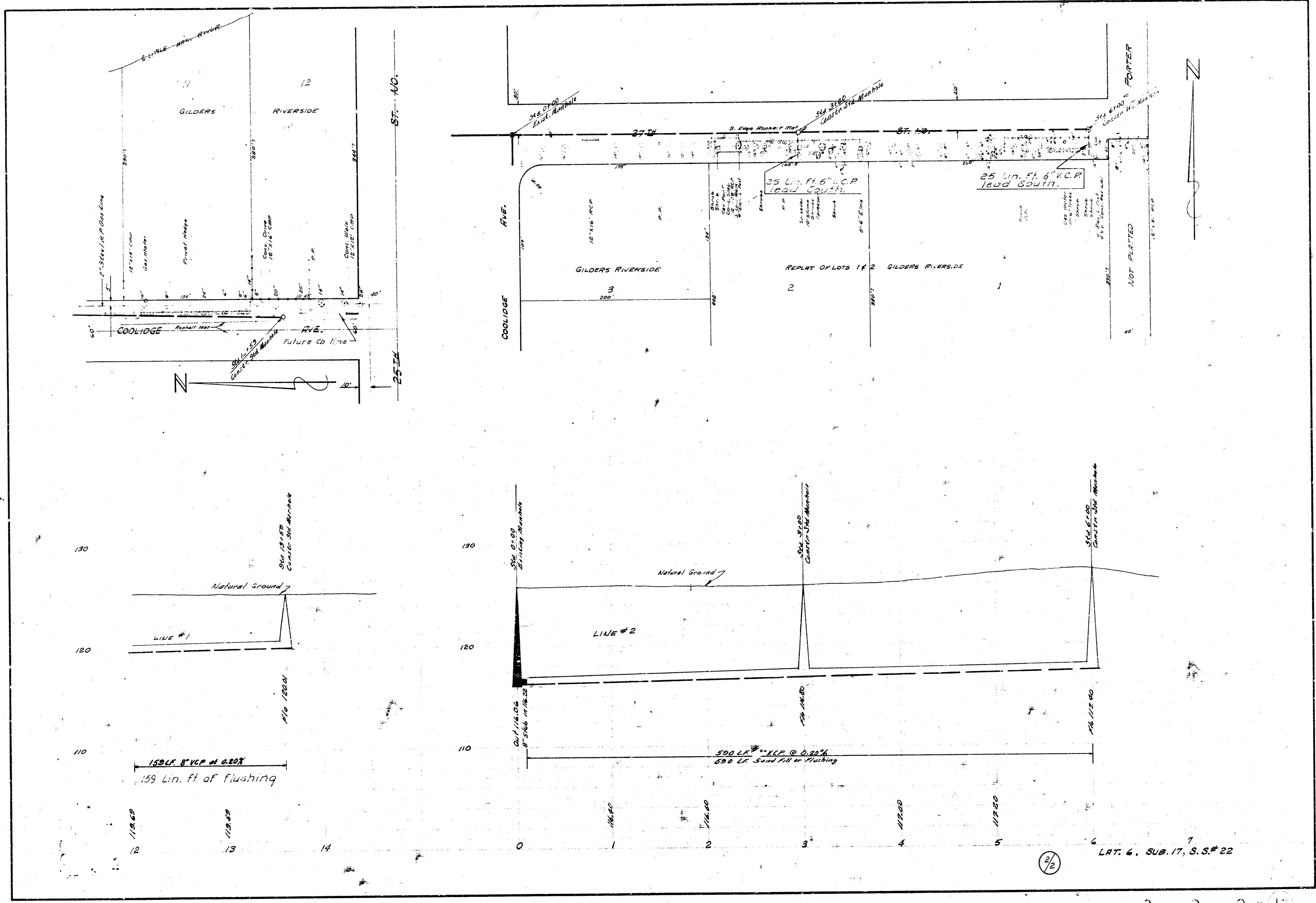
S.M. 125.30 "D" on W. Co. Coolidge @ S.L. 25'
S. M. 127.24 R.R. Spike W.S. P.P. E.S. Porter at N.L. 27th west.
S. M. 127.84 S.S. cor. conc. porch at S.E. cor. Methodist Church N.W. 27th & Coolidge.



LAT. 6, SUB. 17, S. 8. NO. 22
CITY OF WICHITA, KANSAS
B. E. SMITH, CITY ENGINEER
PROJ. NO. C22-49 DATE JULY 1963



1/2



2/2

LAT. 6, SUB. 17, S.S.#22