

Survey by A. Rogers, City of Wichita, Kansas
 Checked by D. Chamberlain, Draftsman

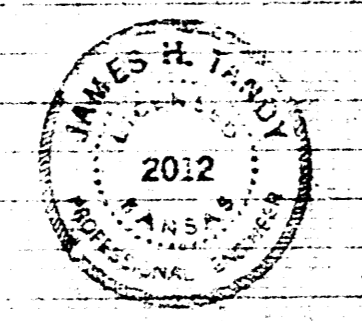
NOTE:
 Replace pavement
 use 6" Rock base &
 4" C.C. Tunnel
 under cb and gr.

NOTE:
 Replace fences etc.
 as noted.
 Replace clothes line poles
 expense of tunneling under
 as gr. to be cleared
 included in bid of street
 repair.

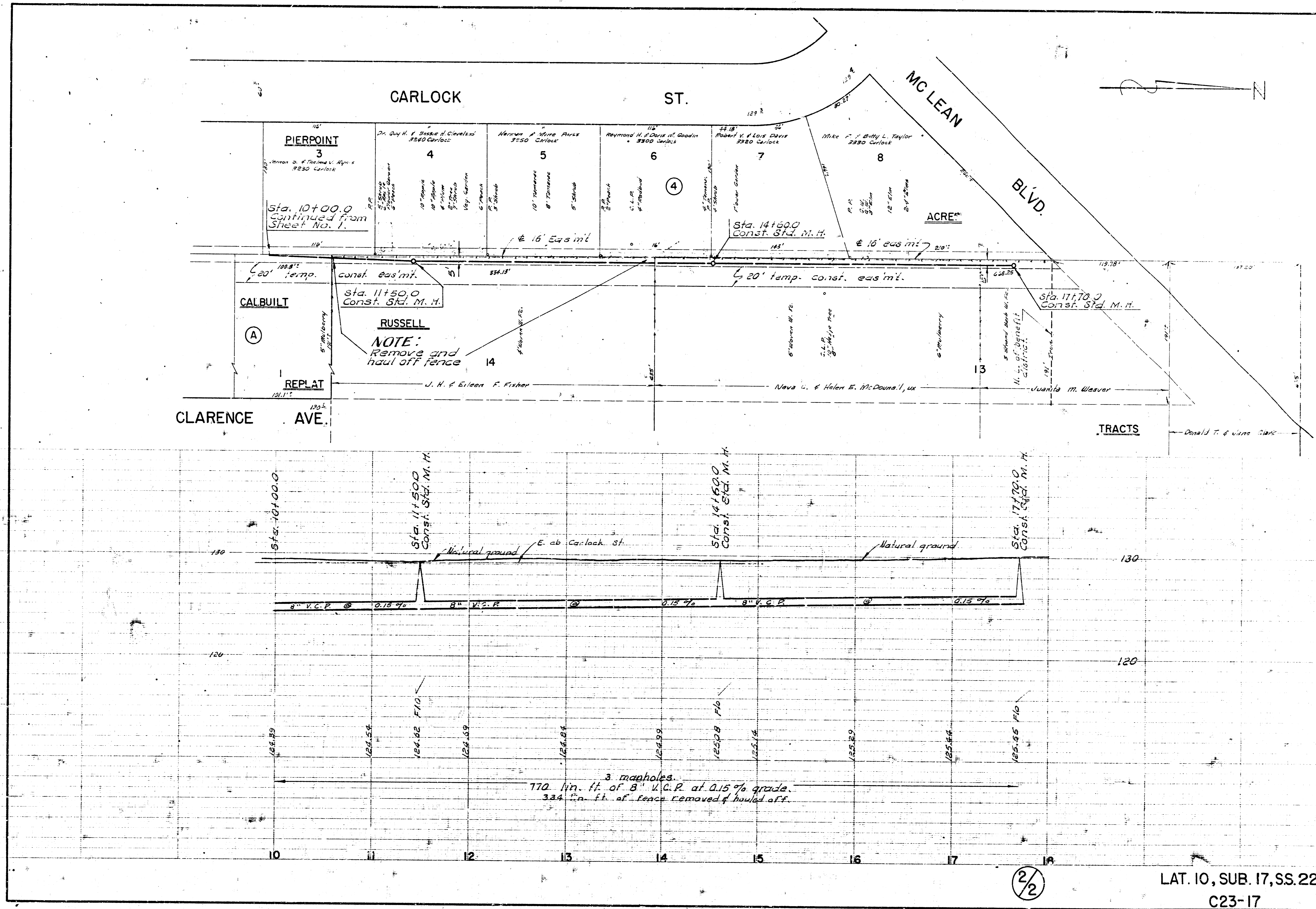
NOTE TO CONTRACTOR
 Do not disturb Pine
 trees on lot No. 3.

NOTE:
 Replace pavement
 use 6" Rock base & 4" C.C.
 Repair gravel surface with gravel
 Tunnel under cb & gr.

LAT. 10, SUB. 17, S.S. NO. 22
 CITY OF WICHITA, KANSAS
 B. E. SMITH, CITY ENGINEER
 PROJ. NO. C23-17 DATE JULY 1965



1/2



2/2

LAT. 10, SUB. 17, SS. 22
C23-17