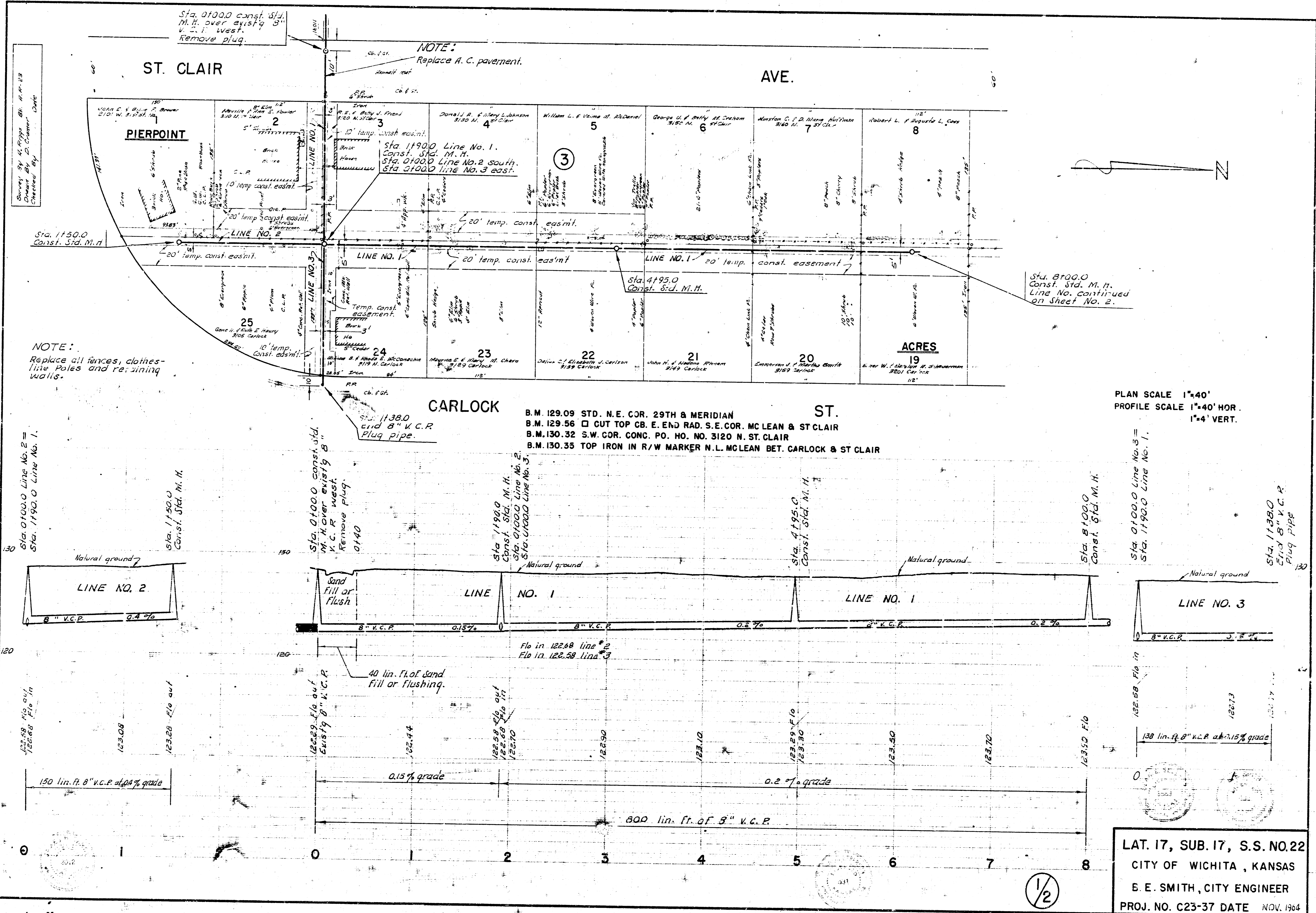


2/2

LAT. 17, SUB. 17, S.S. NO. 22



Survey by H. Papp, B.S. 4-11-23
Checked by D. Cooper, Date

NOTE:
Replace all fences, clothes-line poles and re-sinching walls.

NOTE:
Replace A. C. pavement.

PLAN SCALE 1"=40'
PROFILE SCALE 1"=40' HOR.
1"=4' VERT.

B.M. 129.09 STD. N.E. COR. 29TH & MERIDIAN
B.M. 129.56 CUT TOP CB. E. END RAD. S.E. COR. MCLEAN & ST CLAIR
B.M. 130.32 S.W. COR. CONC. PO. HO. NO. 3120 N. ST. CLAIR
B.M. 130.35 TOP IRON IN R/W MARKER N.L. MCLEAN BET. CARLOCK & ST CLAIR

LAT. 17, SUB. 17, S.S. NO. 22
CITY OF WICHITA, KANSAS
B. E. SMITH, CITY ENGINEER
PROJ. NO. C23-37 DATE NOV. 1924

1/2