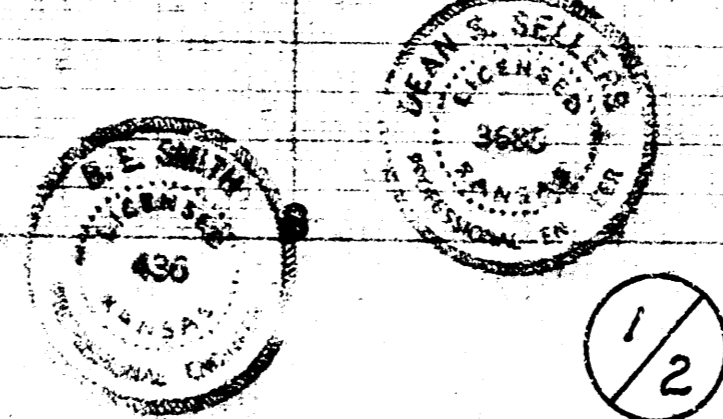


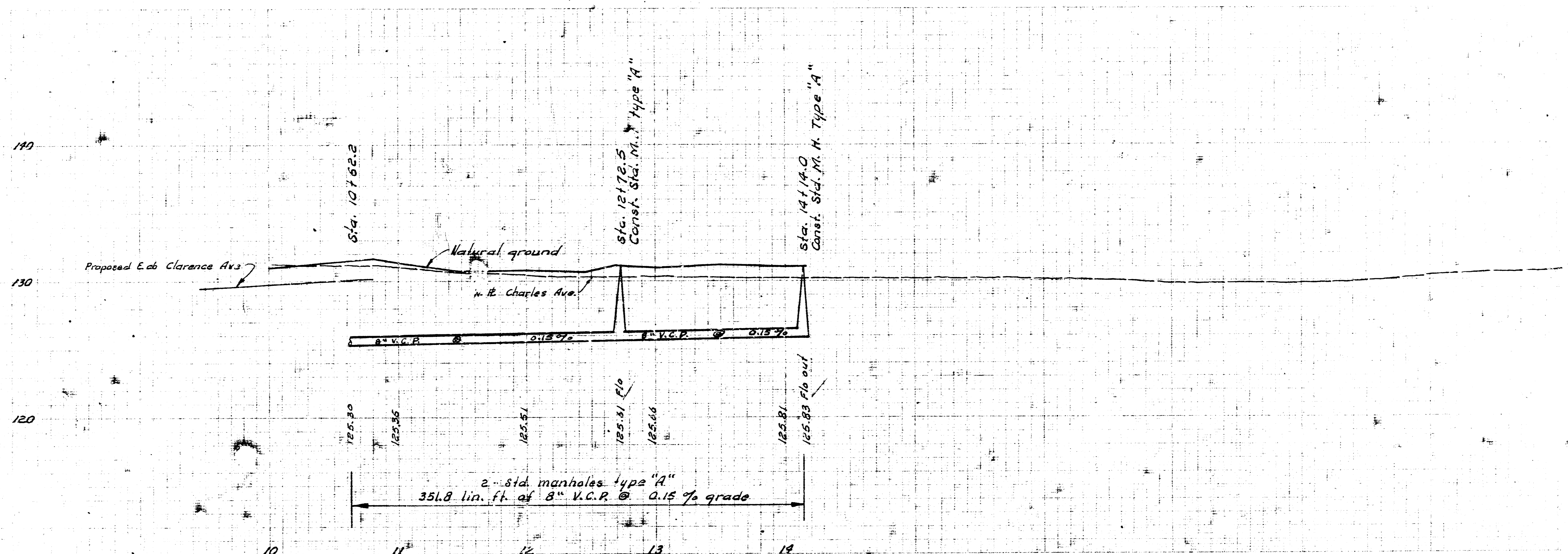
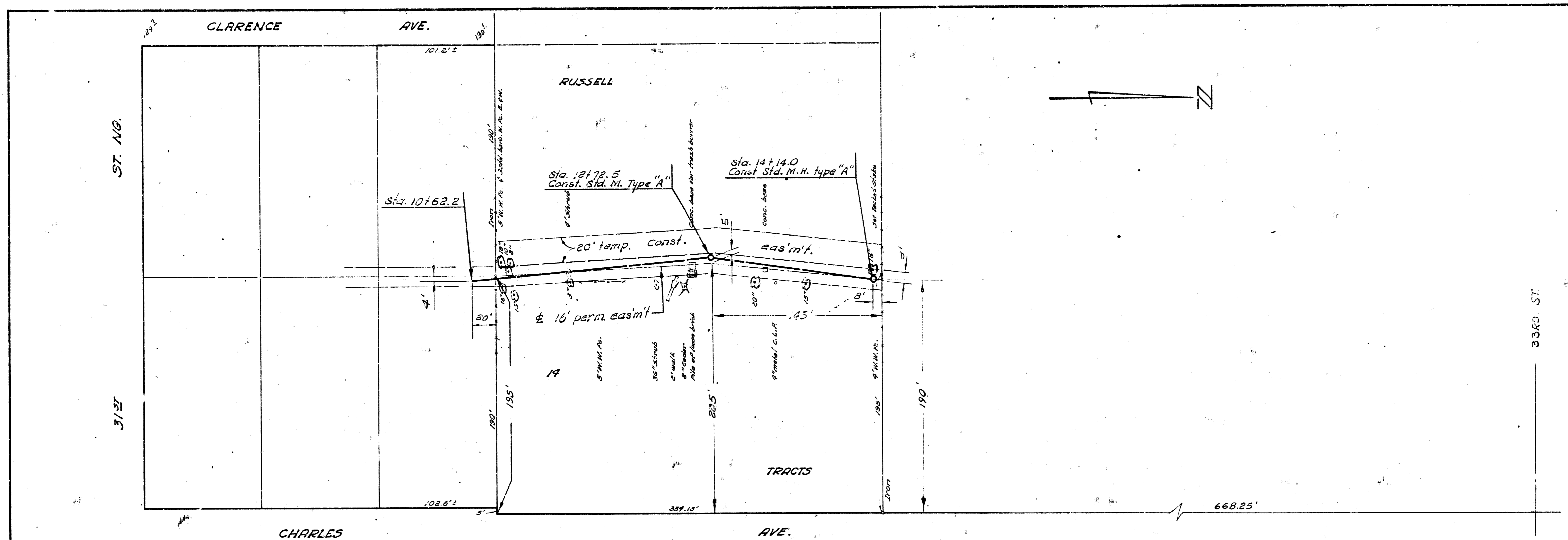
Drawn by D. D. Smith, W. R. 23
 Checked by D. D. Smith, W. R. 23
 Checked by D. D. Smith, W. R. 23

B. M. 123.09 Sta. N.E. Cor. 28th & Marion
 B. M. 123.76 S.E. Cor. Conc. Po. Ho. No. 319 N. Carlack
 B. M. 133.45 S.W. Cor. Conc. Po. Rear No. 3167 N. Charles

5- Sta. manholes type "A"
 1062.2 lin. ft. of 8" V.C.P. @ 0.15% grade
 82 lin. ft. of sand fill or flushing



1/2



2/2

LATERAL 18, SUB. 17, S.S. 22
 PROJ. NO. C23-95

3 11 3

50