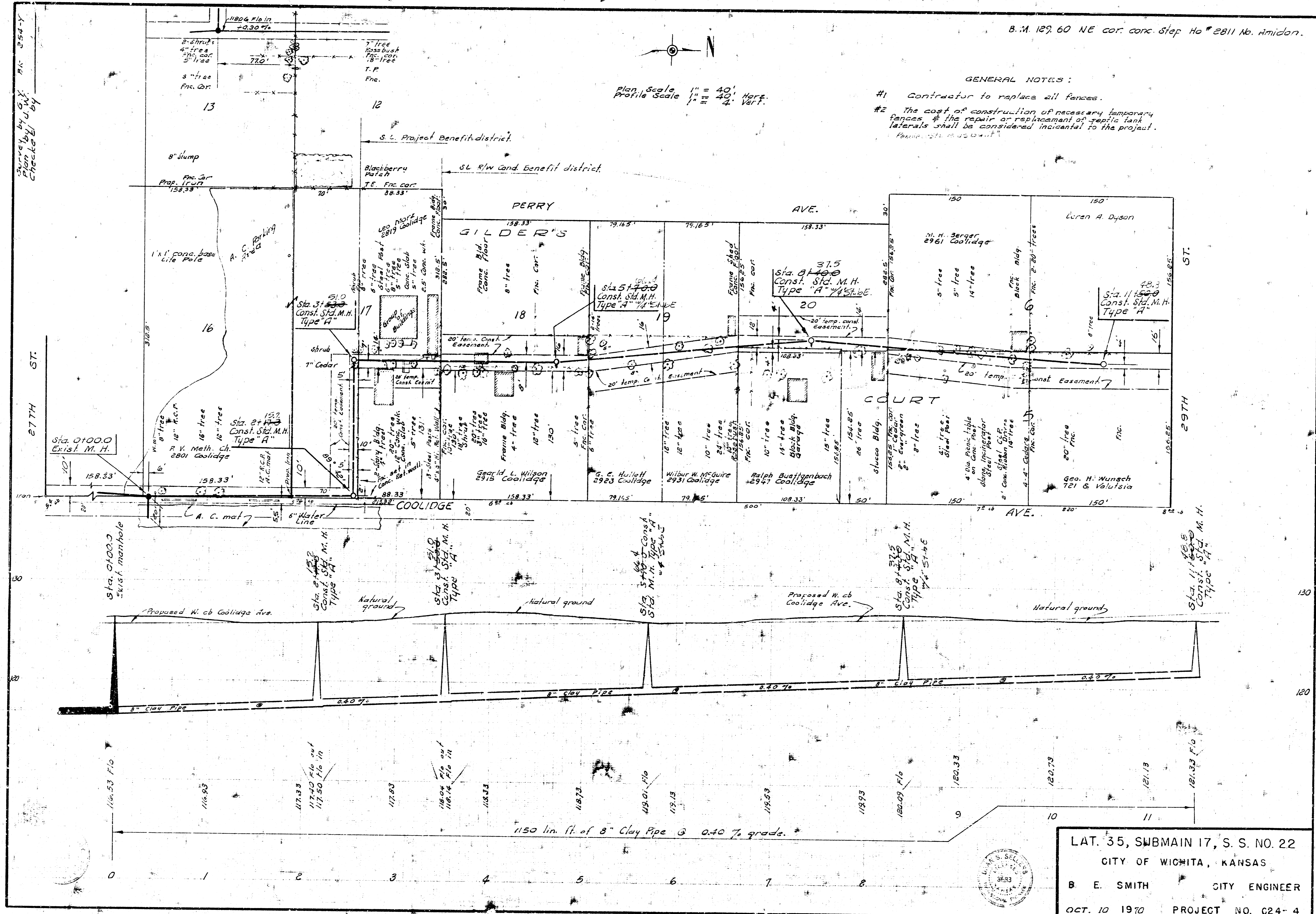


B.M. 129.60 NE cor. conc. step Ho # 2811 No. Amidon.

Plan Scale 1" = 40' Horiz.
Profile Scale 1" = 4' Vert.

GENERAL NOTES:

- #1 Contractor to replace all fences.
- #2 The cost of construction of necessary temporary fences & the repair or replacement of traffic tank laterals shall be considered incidental to the project.



LAT. 35, SUBMAIN 17, S. S. NO. 22
 CITY OF WICHITA, KANSAS
 B. E. SMITH CITY ENGINEER
 OCT. 10 1970 PROJECT NO. C24-4

Plans by D.W. McK. 254-V
Checked by

27TH ST.

130

120

150

150

150

150

150

150

150

150

150

29TH ST.

150

150

150

150

150

150

150

150

