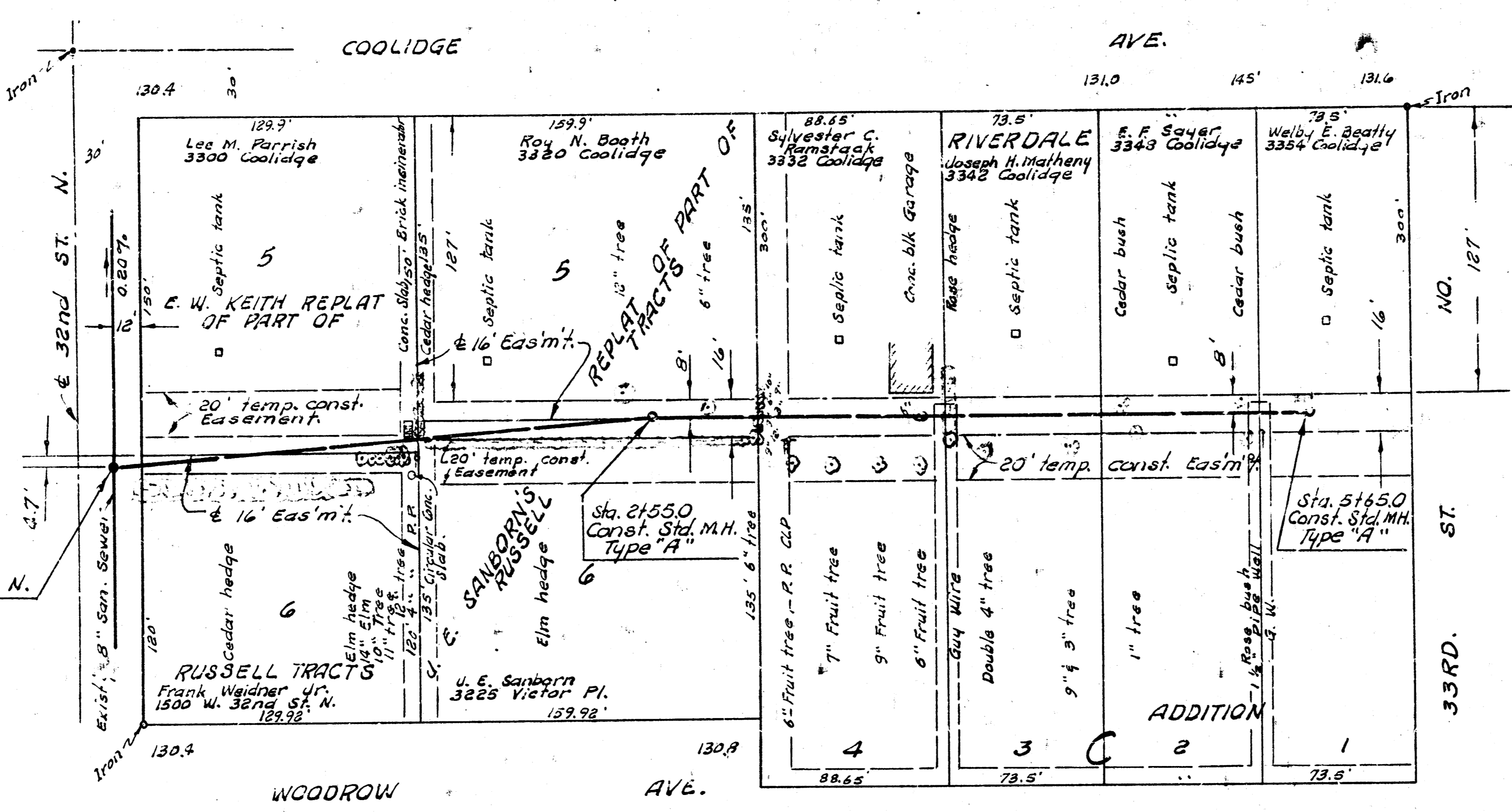


B. M. 130.76 N rim M.H. on N. side  
32nd St. betw. Coolidge &  
Woodrow.

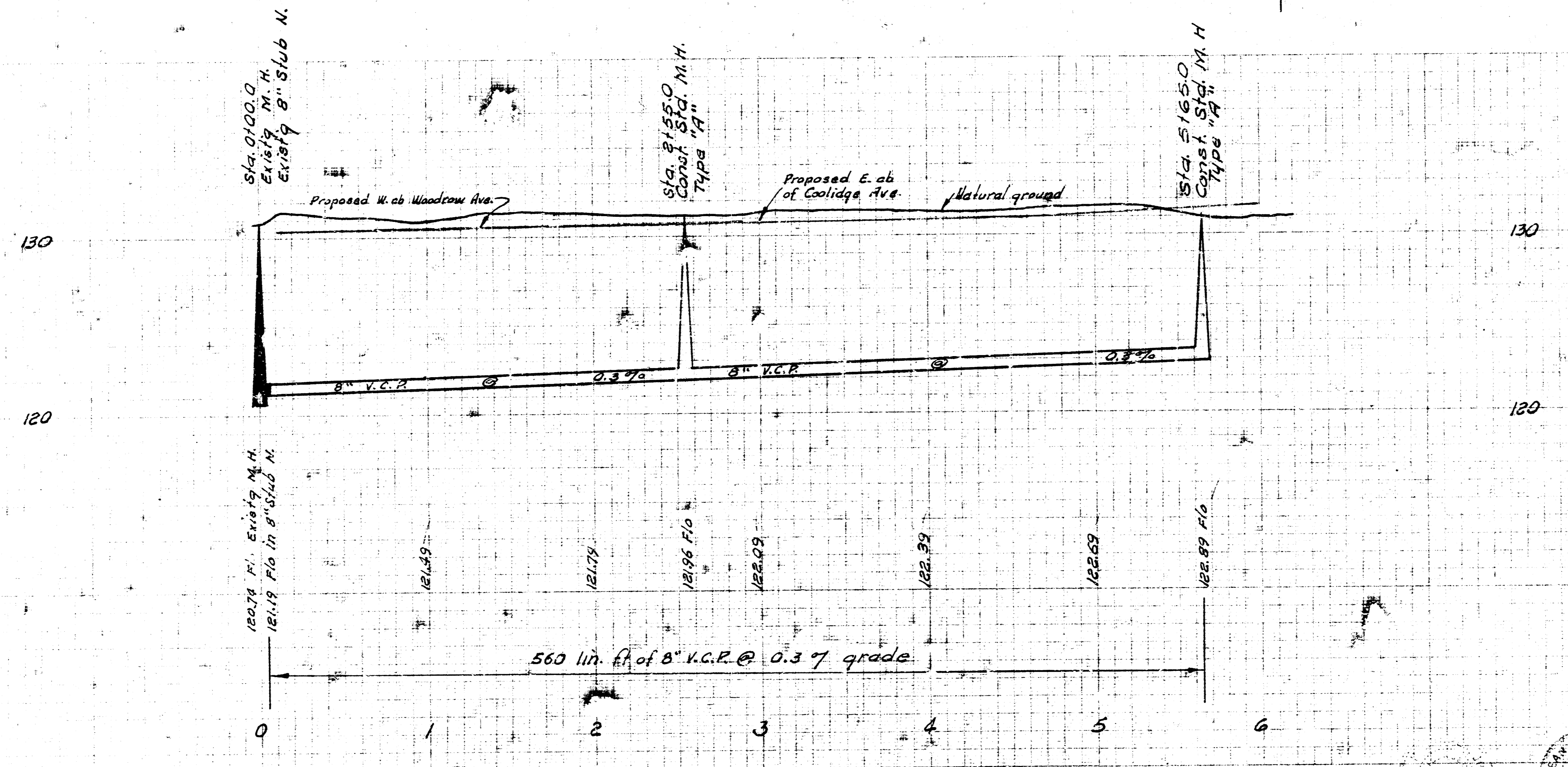
B. M. 132.55 SE cor. cong. Porch Ho.  
on N. side 33rd St. Approx. 50'  
E. of E.L. Coolidge.

B. M. 131.359 City Sid. @ NE cor. 33rd  
St. N. and Amazon Ave.



Plan Scale 1" = 40'  
Profile Scale 1" = 4' Vert.

Survey by J. G. Clark No. JFG 131  
Checked by



LAT. 41, SUBMAIN 17, S. S. NO. 22  
CITY OF WICHITA, KANSAS  
B. E. SMITH CITY ENGINEER  
JUNE 1966 PROJECT NO. C25-13

