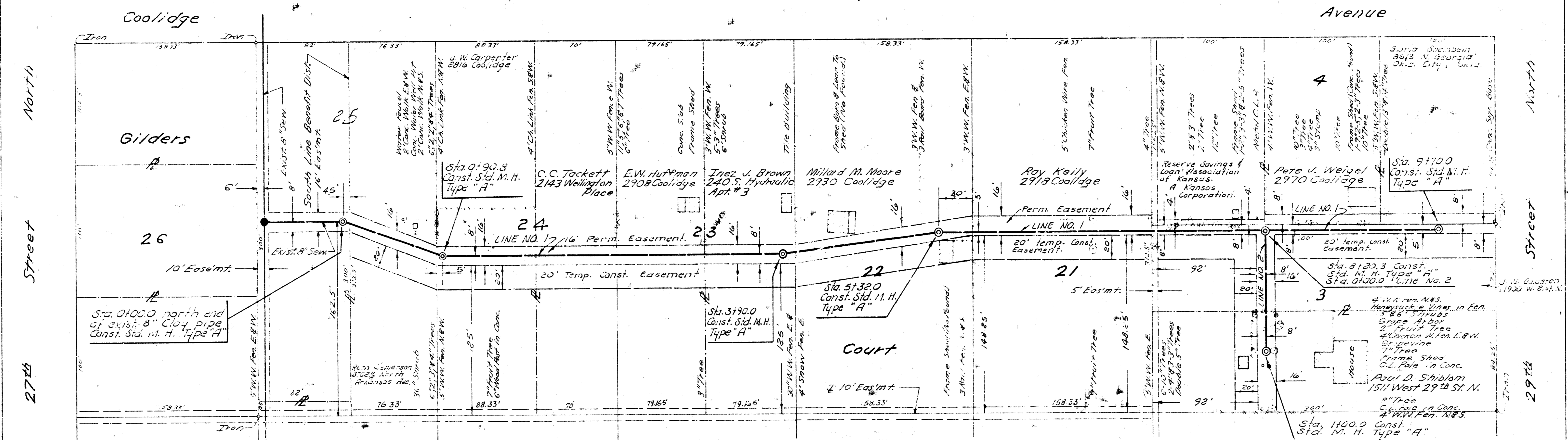
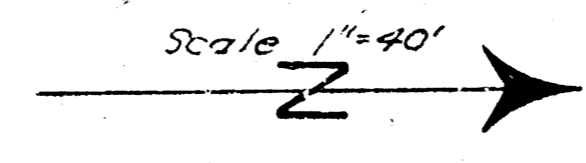
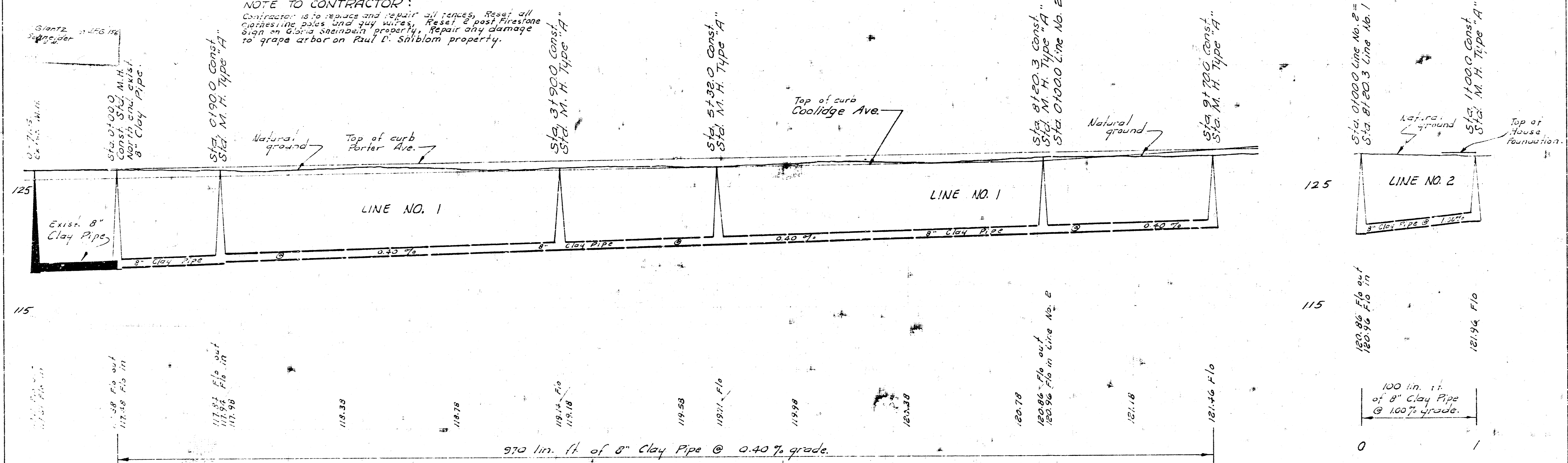


B.M. 127.6 W. Cor. First Conc. Step of House on N.E. Cor. 27th and Coolidge. B.M. 126.34 60' N of S.S. R. Pole M.S. 27th 325' West of Porter Ave. B.M. 128.58 "X" Cut on S.E. Cor. Conc. Sign Base S2. 29th & 155' E. of E.L. Coolidge. Plan Scale 1"=40' Profile Scale 1"=4' Vert.



**NOTE TO CONTRACTOR:**  
 Contractor is to replace and repair all manholes, reset all catchbasins, poles and guy wires, reset & post firestone sign on Gilda Steinbach property, repair any damage to grape arbor on Paul D. Striblorn property.



LAT. 50, SUB. 17, S.S. 22,  
 CITY OF WICHITA, KANSAS  
 R. W. LINN CITY ENGINEER  
 PROJ. NO. DSKL5 67064  
 DATE: MAY 1971