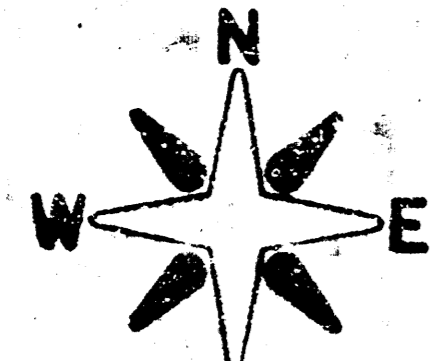


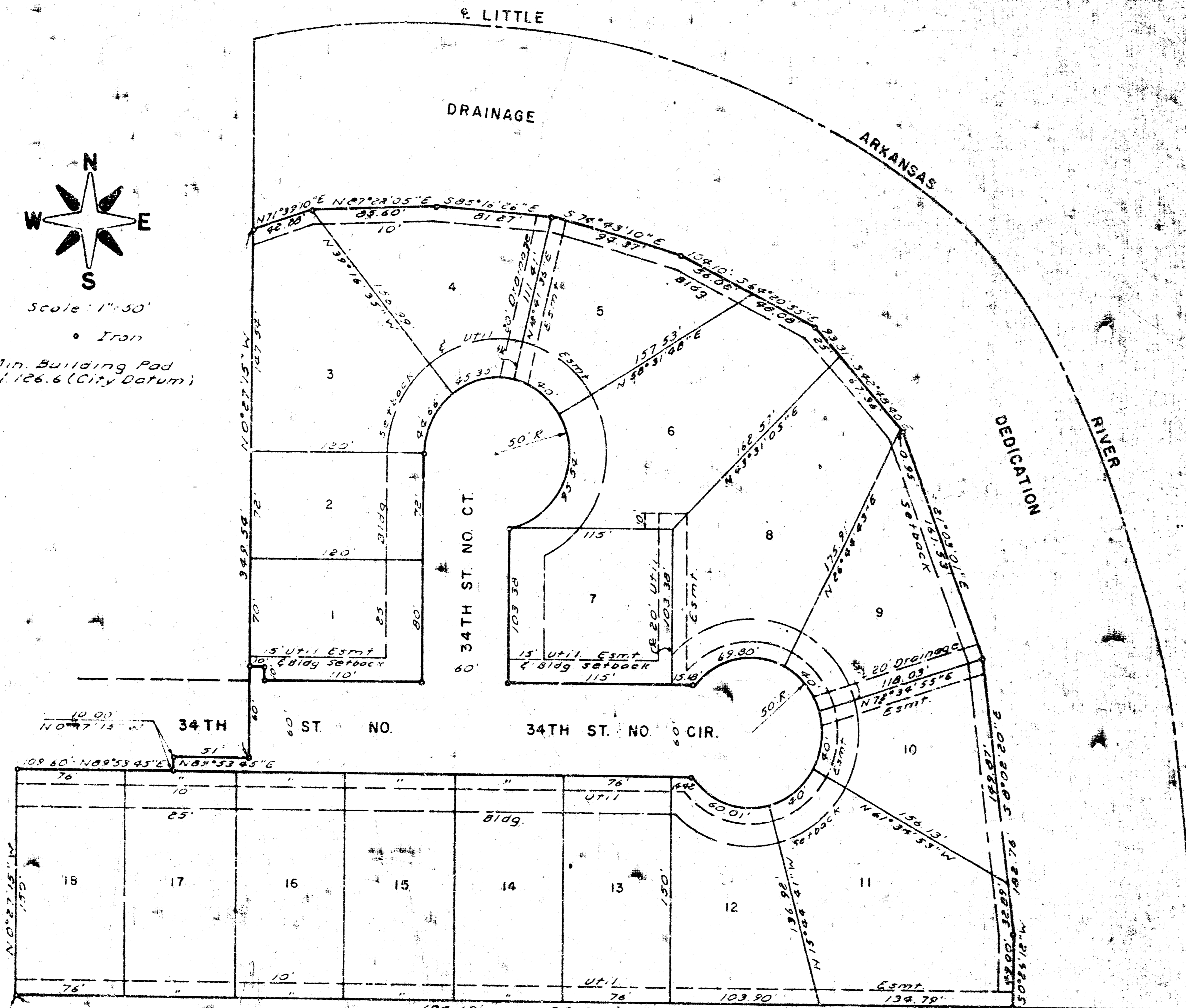
S-2-4-32



Scale 1"=50'

Iron

Min. Building Pad
El. 126.6 (City Datum)



SW Cor. Lot 5, Endicott Add.
031° 4' 6" 220' N 51' 57"
SE 1/4 NE 1/4 Sec. 31-26

State of Kansas 355. We, Baughman Company, P.A., Surveyors in aforesaid county and state, do hereby certify that we have surveyed and platted "RIVER WALK ADDITION", Wichita, Kansas, and that the accompanying plat is a true and correct exhibit of the property surveyed, described as a replat of Lot 2, Endicott Addition to Wichita, Sedgwick County, Kansas, and part of the NE 1/4 of the NE 1/4 of Section 31 and the SW 1/4 of the NW 1/4 of Section 32, in T66S, R1E of the 6th 11M, Sedgwick County, Kansas, described as follows: Beginning at the SW corner of said Lot 2, said point being 631.40 feet east and 220 feet north of the SW corner of the SE 1/4 of the NE 1/4 of said Sec. 31; thence northerly, along the west line of said Lot 2, 150 feet to the NW corner thereof; thence easterly, along the north line of said Lot 2, 109.60 feet to the NE corner thereof; thence northerly, along the east line extended of said Lot 2, 10 feet; thence easterly, parallel to the south line of said SE 1/4 of the NE 1/4, 51 feet; thence northerly, parallel to and 992 feet east of the west line of said SE 1/4 of the NE 1/4, to the center of the Little Arkansas River; thence southeasterly, along

the center of said river to a point 220 feet north of the south line extended of the SE 1/4 of the NE 1/4 of said Sec. 31; thence westerly parallel with the south of said SE 1/4, to the point of beginning.

Date June 27, 1983

Baughman Company, P.A.

John E. Sandblat
John E. Sandblat
Surveyor

RIVER WALK ADDITION

WICHITA, KANSAS

Know all men by these presents, that we, the undersigned, have caused the land described in the surveyors certificate to be platted into lots, streets and a drainage, dedication to be known as "RIVER WALK ADDITION", Wichita, Kansas. The easements are hereby granted as indicated for the construction and maintenance of public utilities. The streets are hereby dedicated to and for the use of the public. The drainage dedication is hereby dedicated for drainage, riverbank maintenance, flood control and river beautification. No building shall be constructed below Elev. 126.6 (City Datum).

This plat of "RIVER WALK ADDITION", Wichita, Kansas, has been submitted to and approved by the Wichita Sedgwick County Metropolitan Area Planning Commission, Wichita, Kansas, dated this 16th day of June, 1983.

Wichita Sedgwick County Metropolitan Area Planning Commission

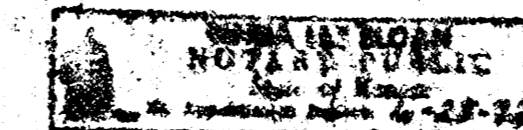
[Signature] Chairman
[Signature] Secretary

This plat approved and all dedications shown hereon accepted by the Board of City Commissioners, Wichita, Kansas, this 26th day of July, 1983.

[Signature] Mayor
[Signature] City Clerk

State of Kansas 355. The foregoing instrument was acknowledged before me this 30th day of June, 1983, by Raymond F. Linnen and Virginia C. Linnen, his wife.

[Signature] Notary Public
My Commission Expires June 28, 1984



State of Kansas 355. The foregoing instrument was acknowledged before me this 30th day of June, 1983, by William F. Endicott and Peggy Jo Endicott, his wife.

[Signature] Notary Public
My Commission Expires May 12, 1984



This plat approved and all dedications shown hereon accepted by the Board of County Commissioners, Sedgwick County, Kansas, this day of July, 1983.

[Signature] Chairman
[Signature] Commissioner
[Signature] County Clerk

Entered on the records this day of August, 1983, at 1:00 clock, P.M.

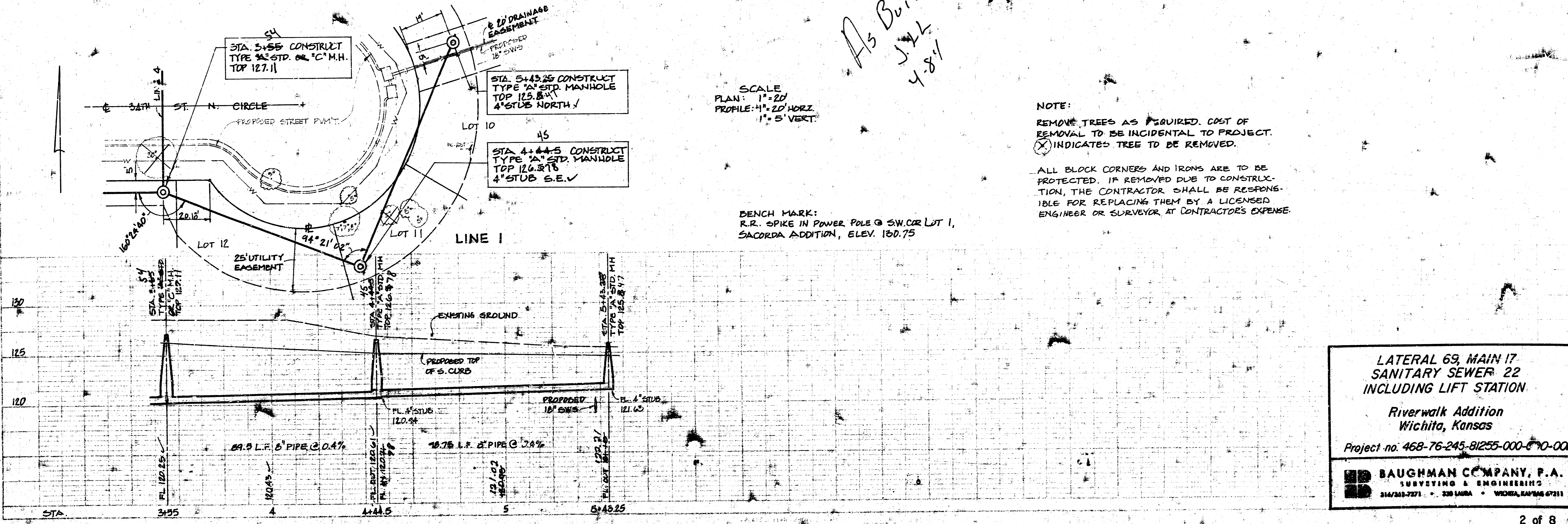
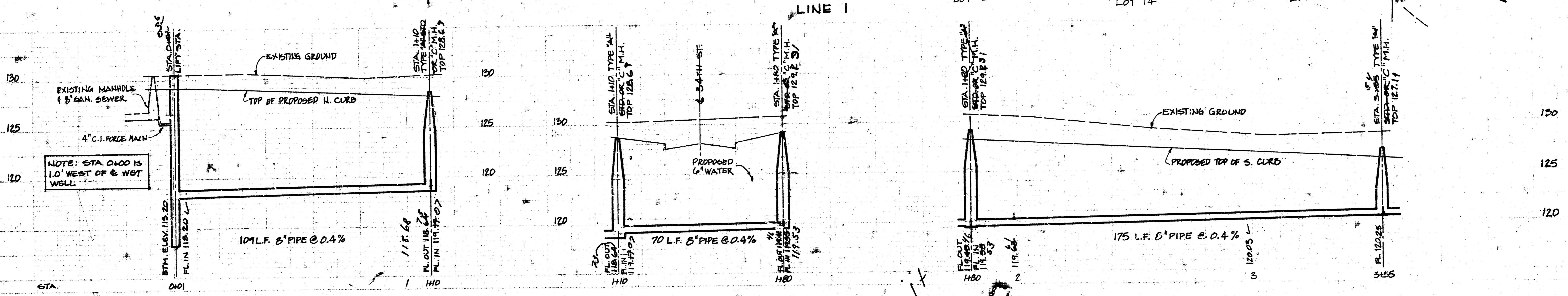
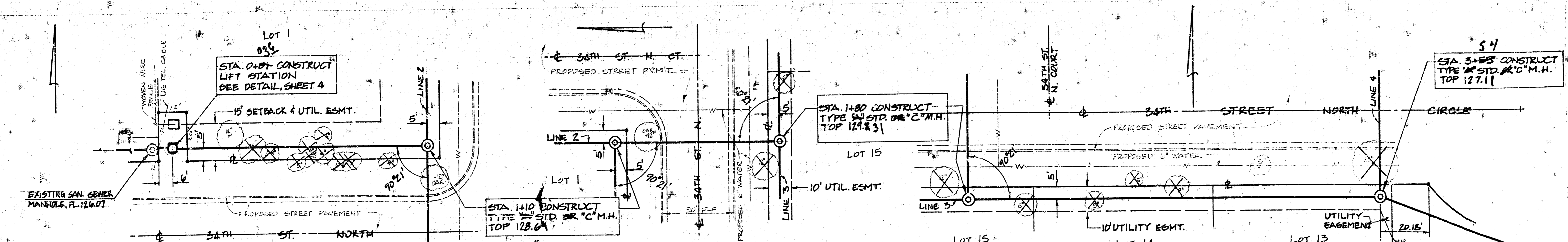
[Signature] County Clerk

State of Kansas 355. This is to certify that this plat has been filed for record in the Office of the Register of Deeds this 14th day of August, 1983, at 1:00 clock, P.M., and is duly recorded.

[Signature] Register of Deeds
[Signature] Deputy

S-2-4-32

14 1 3 12 of 8



SCALE
PLAN: 1" = 20'
PROFILE: 4" = 20' HORIZ
1" = 5' VERT

*As Built
J.L.L.
4-8-11*

BENCH MARK:
R.R. SPIKE IN POWER POLE @ SW COR LOT 1,
SACORDA ADDITION, ELEV. 130.75

NOTE:
REMOVE TREES AS REQUIRED. COST OF
REMOVAL TO BE INCIDENTAL TO PROJECT.
X INDICATES TREE TO BE REMOVED.

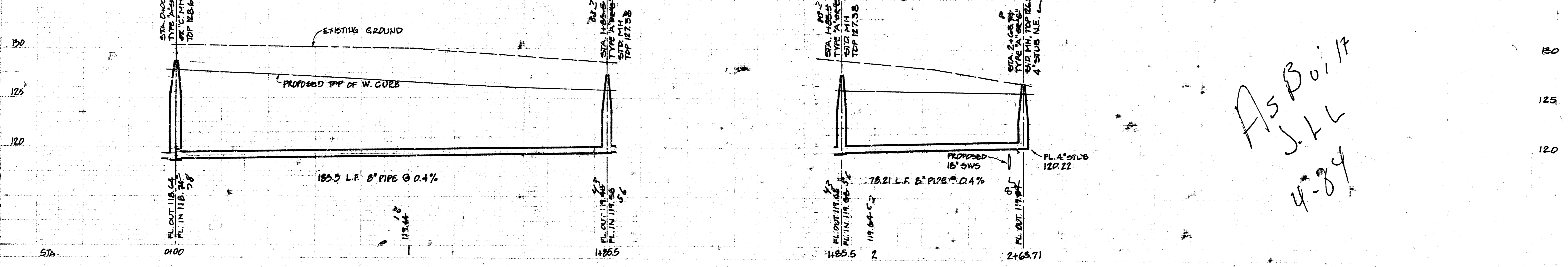
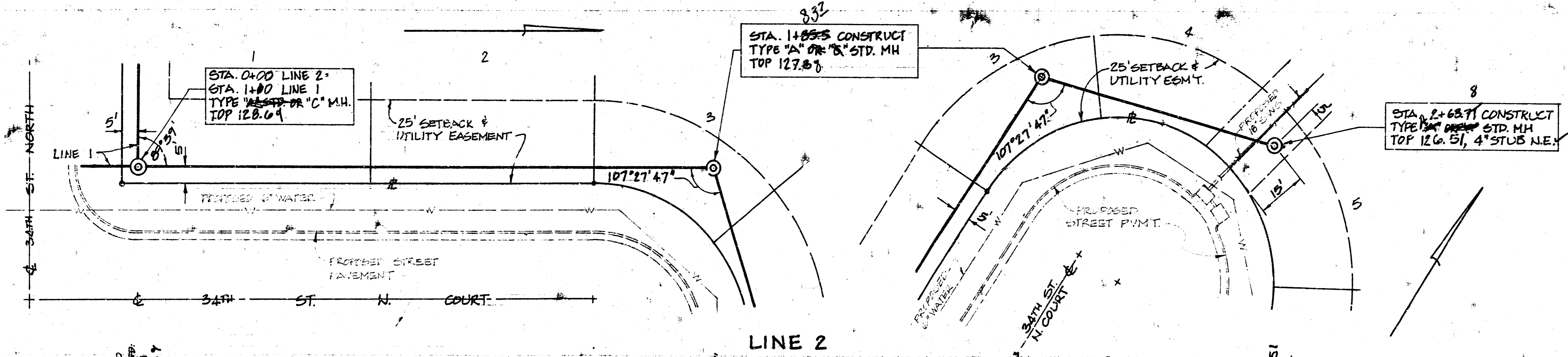
ALL BLOCK CORNERS AND IRONS ARE TO BE
PROTECTED. IF REMOVED DUE TO CONSTRUCTION,
THE CONTRACTOR SHALL BE RESPONSIBLE FOR
REPLACING THEM BY A LICENSED ENGINEER OR
SURVEYOR AT CONTRACTOR'S EXPENSE.

LATERAL 69, MAIN 17
SANITARY SEWER 22
INCLUDING LIFT STATION

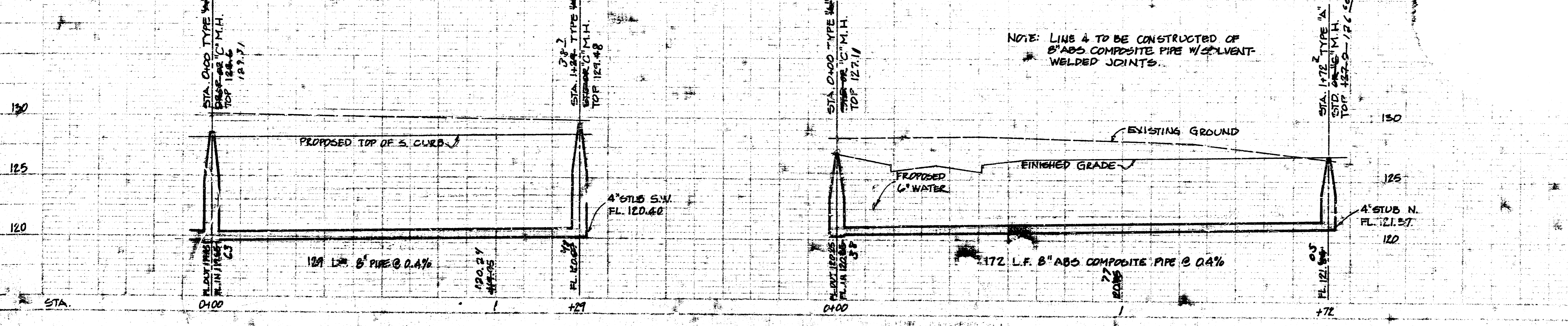
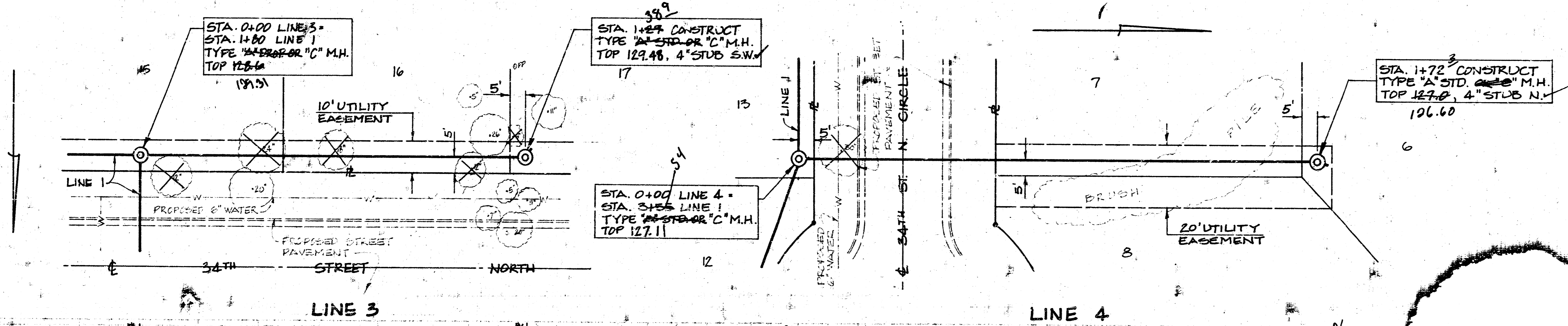
Riverwalk Addition
Wichita, Kansas

Project no. 468-76-245-81255-000-010-001

BAUGHMAN COMPANY, P.A.
SURVEYING & ENGINEERING
314/261-7271 • 330 LAUREL • WICHITA, KANSAS 67211



As Boil
 J.L.L.
 4-84

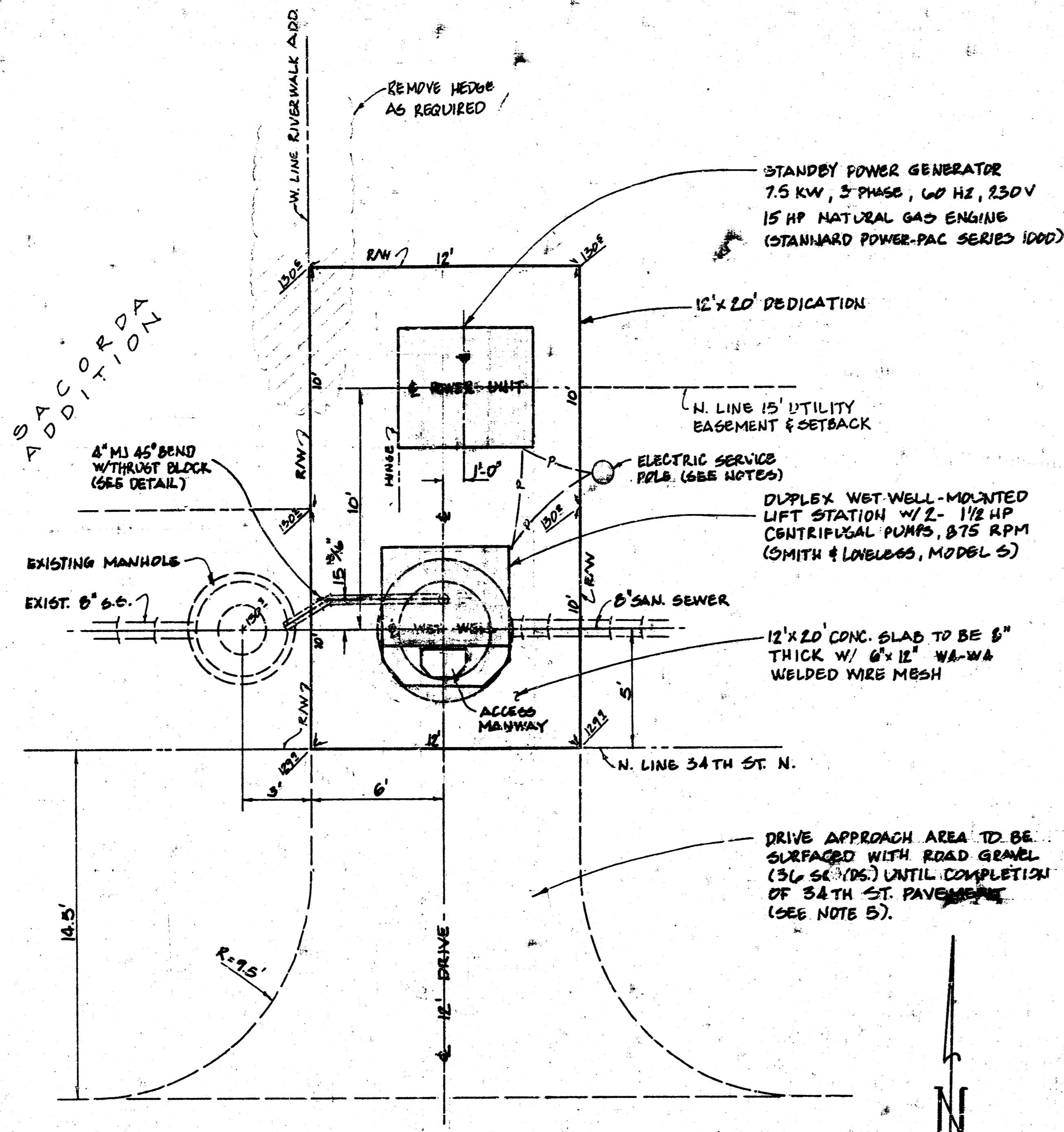


NOTE: LINE 4 TO BE CONSTRUCTED OF 8" ABS COMPOSITE PIPE W/ WELDED JOINTS.

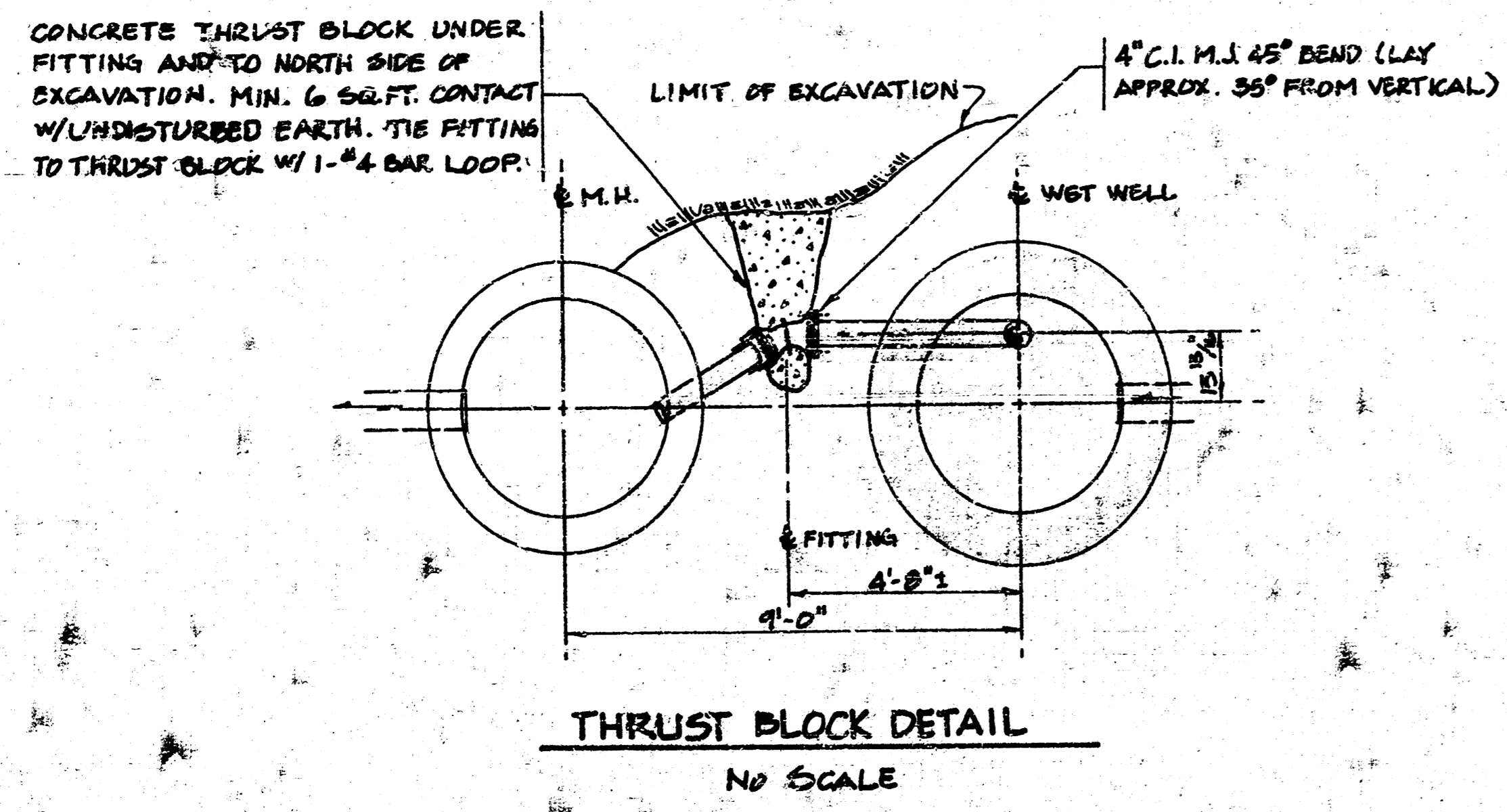
SCALE
 PLAN: 1"=20'
 PROFILE: 1"=20' HORIZ.
 1"=5' VERT.

**LATERAL 69, MAIN 17
 SANITARY SEWER 22
 INCLUDING LIFT STATION**
 Riverwalk Addition
 Wichita, Kansas
 Project no. 468-76-245-81255-000-001

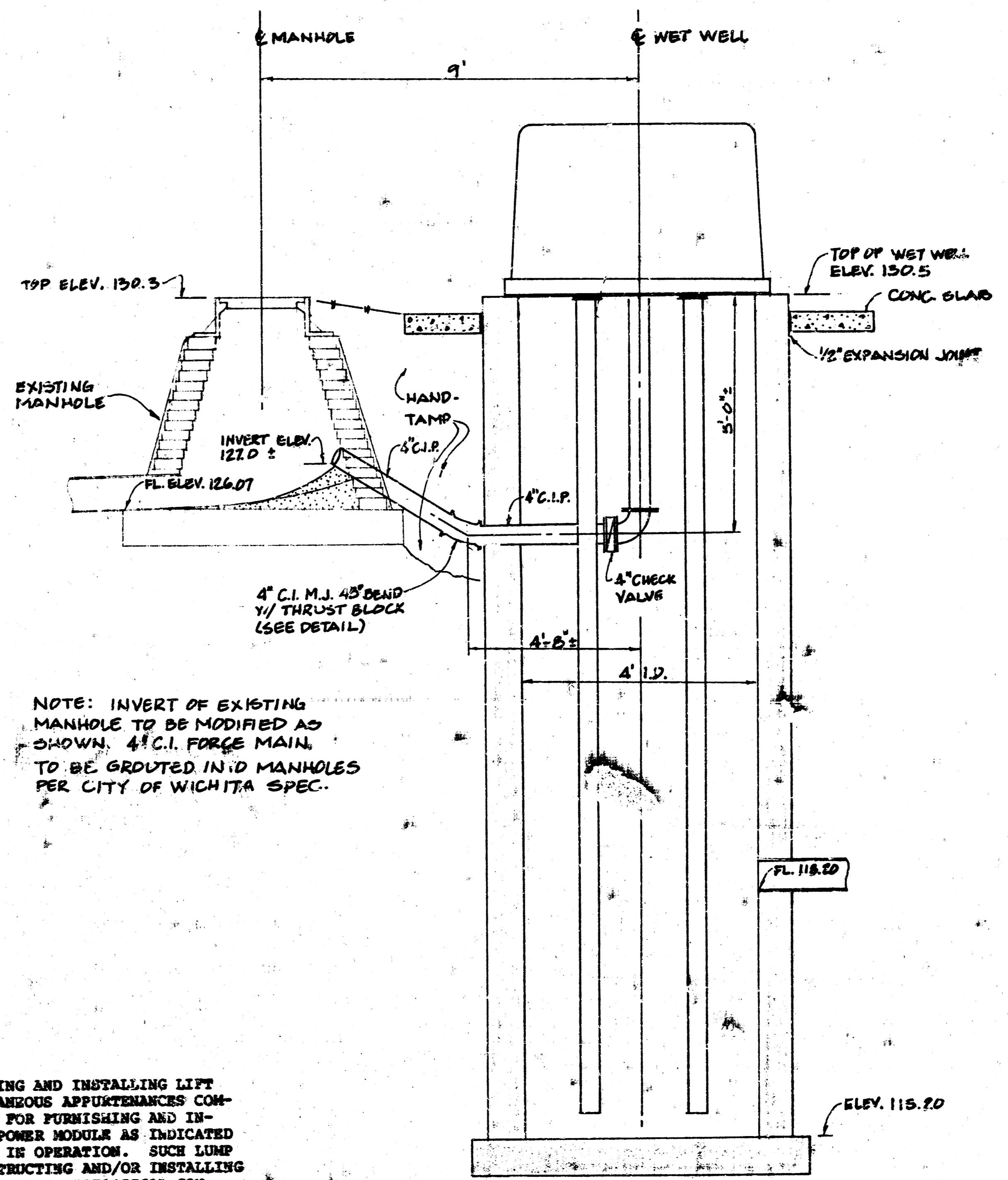
BAUGHMAN COMPANY, P.A.
 SURVEYING & ENGINEERING
 314/262-7271 • 2450 W. 17TH ST. • WICHITA, KANSAS 67211



LIFT STATION
SITE PLAN
1" = 4'



THRUST BLOCK DETAIL
NO SCALE



LIFT STATION
SECTIONAL ELEVATION
NO SCALE

NOTES:

1. THE LUMP SUM PRICE BID FOR FURNISHING AND INSTALLING LIFT STATION WITH STANDBY POWER AND MISCELLANEOUS APPURTENANCES COMPLETE IN PLACE SHALL INCLUDE ALL COSTS FOR FURNISHING AND INSTALLING THE LIFT STATION AND STANDBY POWER MODULE AS INDICATED ON THE SITE PLAN COMPLETE IN PLACE AND IN OPERATION. SUCH LUMP SUM BID SHALL INCLUDE THE COST OF CONSTRUCTING AND/OR INSTALLING COMPACTED SUBGRADE, CONCRETE PAD, POWER POLE, ELECTRICAL CONDUIT, ELECTRICAL WIRING, DISCONNECT SWITCH, ELECTRICAL POWER SUPPLY, NATURAL GAS FUEL SUPPLY, FINISHED GRADING AND ANY OTHER INCIDENTALS NECESSARY TO COMPLETE THE WORK.
2. CONTRACTOR SHALL INSTALL A 10" X 12' CREOSOTED WOOD POWER POLE IN A LOCATION APPROVED BY THE ENGINEER. POLE SHALL BE INSTALLED WITH 8" EXPOSED ABOVE GROUND. CONTRACTOR SHALL ALSO CONSTRUCT CONCRETE PAD FOR K.G.M. TRANSFORMER ON THE EAST SIDE OF LIFT STATION PAD IN A LOCATION ALSO APPROVED BY THE ENGINEER. TRANSFORMER PAD SHALL BE CONSTRUCTED TO CONFORM WITH REQUIREMENTS OF K.G.M.
3. A 2" CONDUIT SHALL BE INSTALLED UNDERGROUND FROM THE LIFT STATION MODULE TO THE STANDBY POWER MODULE AND FROM THE STANDBY POWER MODULE TO THE DISCONNECT SWITCH LOCATED ON POWER POLE. A 3/4" CONDUIT SHALL BE INSTALLED UNDERGROUND BETWEEN THE LIFT STATION MODULE AND THE POWER POLE TO FACILITATE CONNECTION OF THE ALARM SYSTEM BY OTHERS. THE ELECTRICAL POWER SUPPLY TO THE METER BASE MUST ALSO BE UNDERGROUND. ALL ELECTRICAL WIRING SHALL CONFORM TO THE CITY OF WICHITA CODES.
4. A UL LISTED LIGHTNING ARRESTOR SHALL BE INSTALLED AFTER THE DISCONNECT SWITCH FOR VOLTAGE SURGE PROTECTION OF THE PHASE GENERATOR, AUTOMATIC TRANSFER SWITCH, AND ALL SECONDARY WIRING.
5. CONCRETE DRIVE APPROACH TO LIFT STATION TO BE INSTALLED AS PART OF 34TH STREET PAVING PROJECT. CONTRACTOR SHALL GRADE AREA TO PROVIDE POSITIVE SURFACE DRAINAGE FROM LIFT STATION UNWELL PERMITS IS COMPLETED.
6. 3-PHASE PUMP MOTORS SHALL BE POWERED BY A ROTARY PHASE GENERATOR (1- TO 2-PHASE) WHICH SHALL BE AUTOMATICALLY ENERGIZED NO LESS THAN 6 SECS. NOR MORE THAN 15 SECS. BEFORE PUMP MOTOR IS ENERGIZED. THE PHASE GENERATOR SHALL BE "ROTO-PAC" MODEL CM (3 HP OR SMALLER, 208 VOLTS, WITH 115 V CONTROL VOLTAGE) AS MANUFACTURED BY ARCO ELECTRIC PRODUCTS, OR EQUAL. THE PHASE GENERATOR SHALL BE INSTALLED IN A NEMA 3 R RAISED ENCLOSURE WITH REMOVABLE ACCESS COVER, AND LOCATED ON THE SERVICE POLE, A MINIMUM OF 2' ABOVE GROUND. THE LUMP SUM PRICE BID FOR FURNISHING AND INSTALLING THE LIFT STATION SHALL INCLUDE THE PHASE GENERATOR EQUIPMENT, FURNISHED AND IN PLACE, AND SHALL ALSO INCLUDE ONE 3-PHASE PHASE GENERATOR, TO BE DELIVERED TO THE CITY OF WICHITA STREET MAINTENANCE DEPARTMENT.

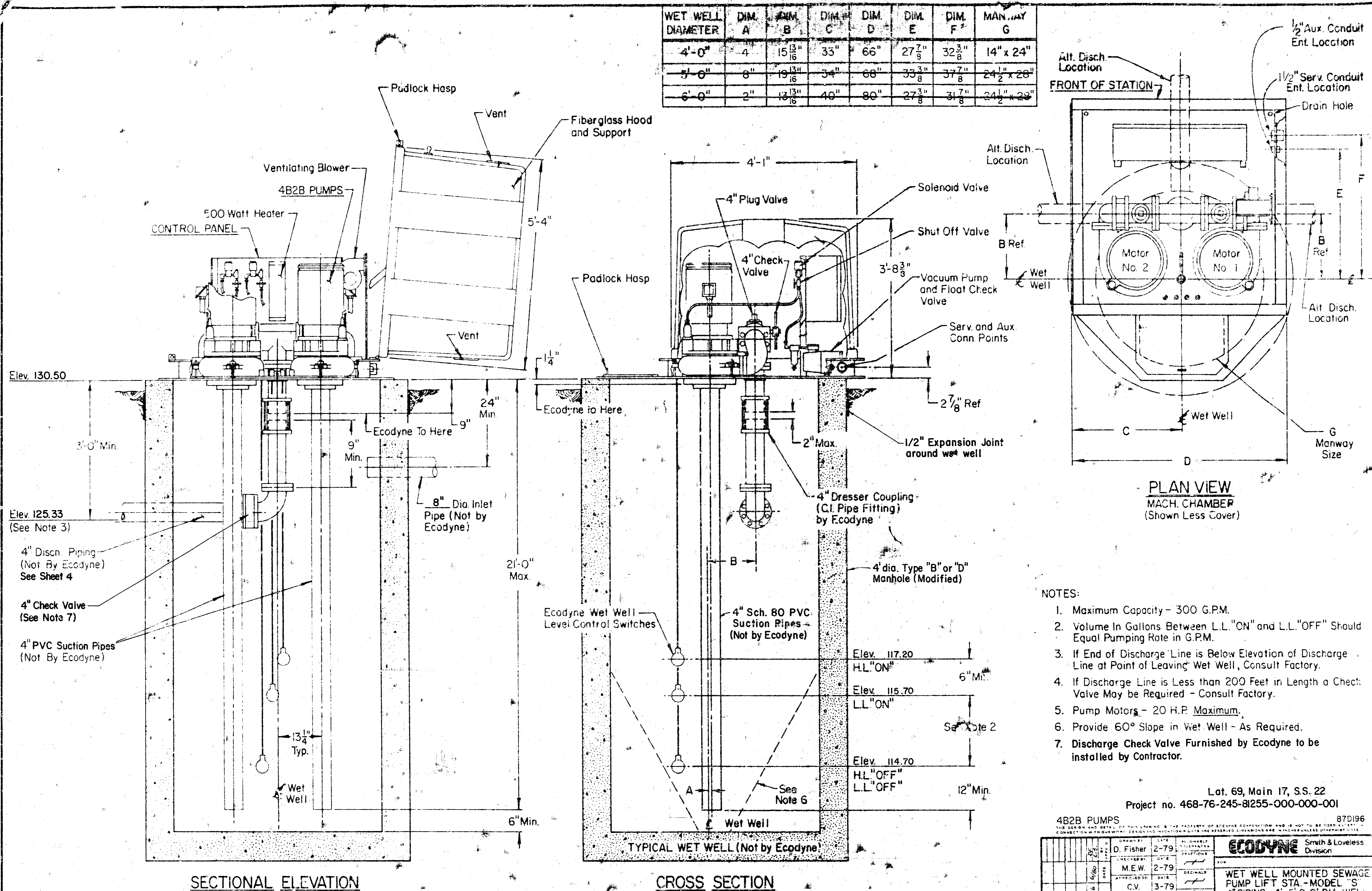
LATERAL 69" MAIN 17
SANITARY SEWER 22
INCLUDING LIFT STATION

Riverwalk Addition
Wichita, Kansas

Project no. 468-76-245-81255-000-000

BAUGHMAN COMPANY, P.A.
SURVEYING & ENGINEERING
314/243-7271 • 230 LAURA • WICHITA, KANSAS 67211

WET WELL DIAMETER	DIM A	DIM B	DIM C	DIM D	DIM E	DIM F	MANWAY G
4'-0"	4"	15 ¹³ / ₁₆ "	33"	66"	27 ⁷ / ₈ "	32 ³ / ₈ "	14" x 24"
5'-0"	6"	19 ¹³ / ₁₆ "	34"	68"	33 ³ / ₈ "	37 ⁷ / ₈ "	24 ¹ / ₂ x 28"
6'-0"	2"	13 ¹³ / ₁₆ "	40"	80"	27 ³ / ₈ "	31 ⁷ / ₈ "	24 ¹ / ₂ x 28"



- NOTES:
1. Maximum Capacity - 300 G.P.M.
 2. Volume In Gallons Between L.L. "ON" and L.L. "OFF" Should Equal Pumping Rate in G.P.M.
 3. If End of Discharge Line is Below Elevation of Discharge Line at Point of Leaving Wet Well, Consult Factory.
 4. If Discharge Line is Less than 200 Feet in Length a Check Valve May be Required - Consult Factory.
 5. Pump Motors - 20 H.P. Maximum.
 6. Provide 60° Slope in Wet Well - As Required.
 7. Discharge Check Valve Furnished by Ecodyne to be installed by Contractor.

Lat. 69, Main 17, S.S. 22
 Project no. 468-76-245-81255-000-000-001

4B2B PUMPS 87D196

THE DESIGN AND DETAIL OF THIS DRAWING IS THE PROPERTY OF ECODYNE CORPORATION AND IS NOT TO BE REPRODUCED, COPIED, OR TRANSMITTED IN ANY FORM OR BY ANY MEANS, WITHOUT THE WRITTEN PERMISSION OF ECODYNE CORPORATION.

DATE	DESCRIPTION	BY	CHKD
2-79	DESIGN	D. FISHER	
2-79	CHECKED		
2-79	M.E.W.		
3-79	C.V.		
	SCALE	none	
	ORIGINAL	N78-16	

ECODYNE Smith & Loveless Division

WET WELL MOUNTED SEWAGE PUMP LIFT STA. - MODEL "S" 4" PIPING - 4', 5', 6' DIA. WELL

Eq. 1

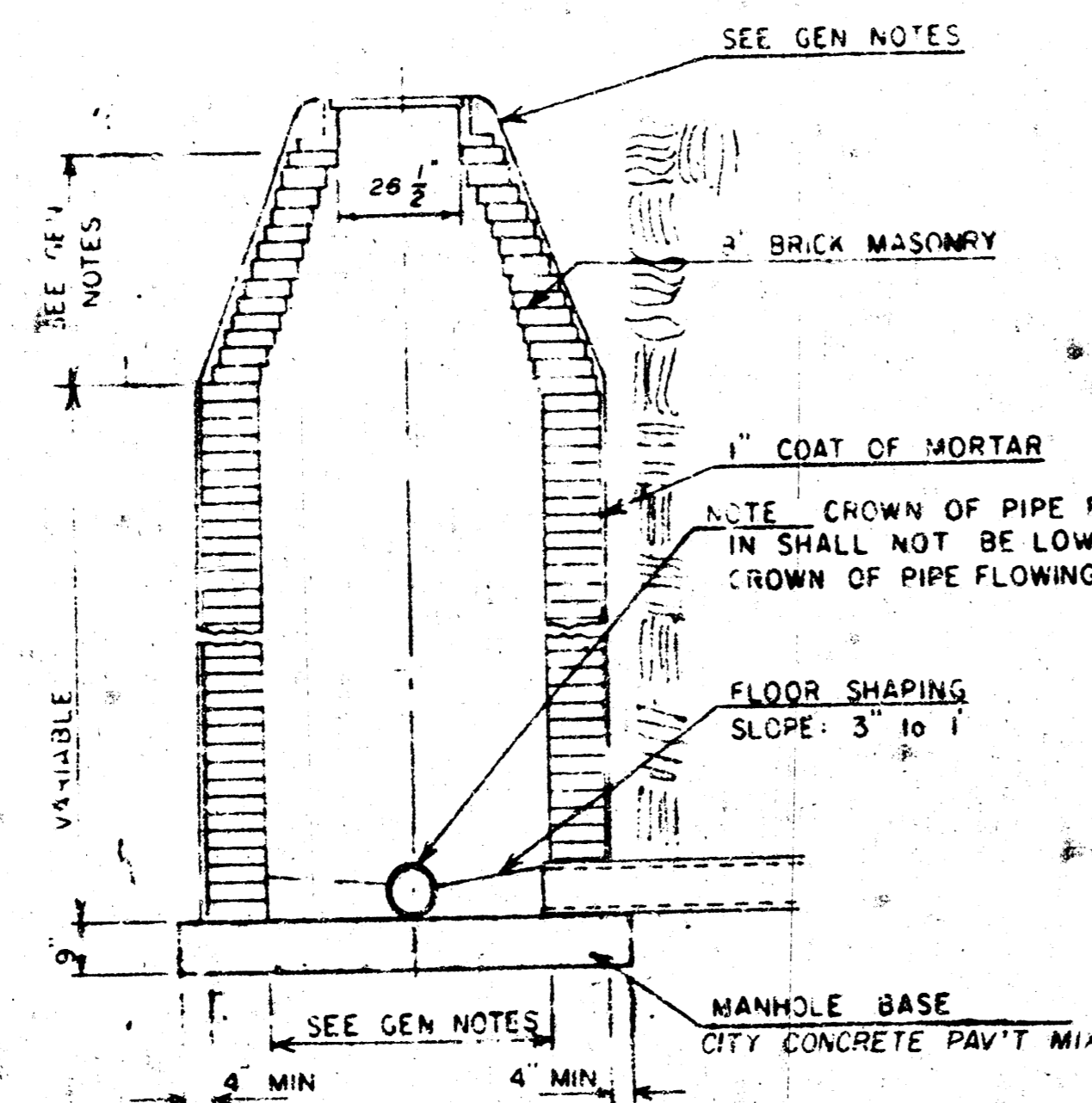
87D191

SEWER APPURTENANCES DETAILS

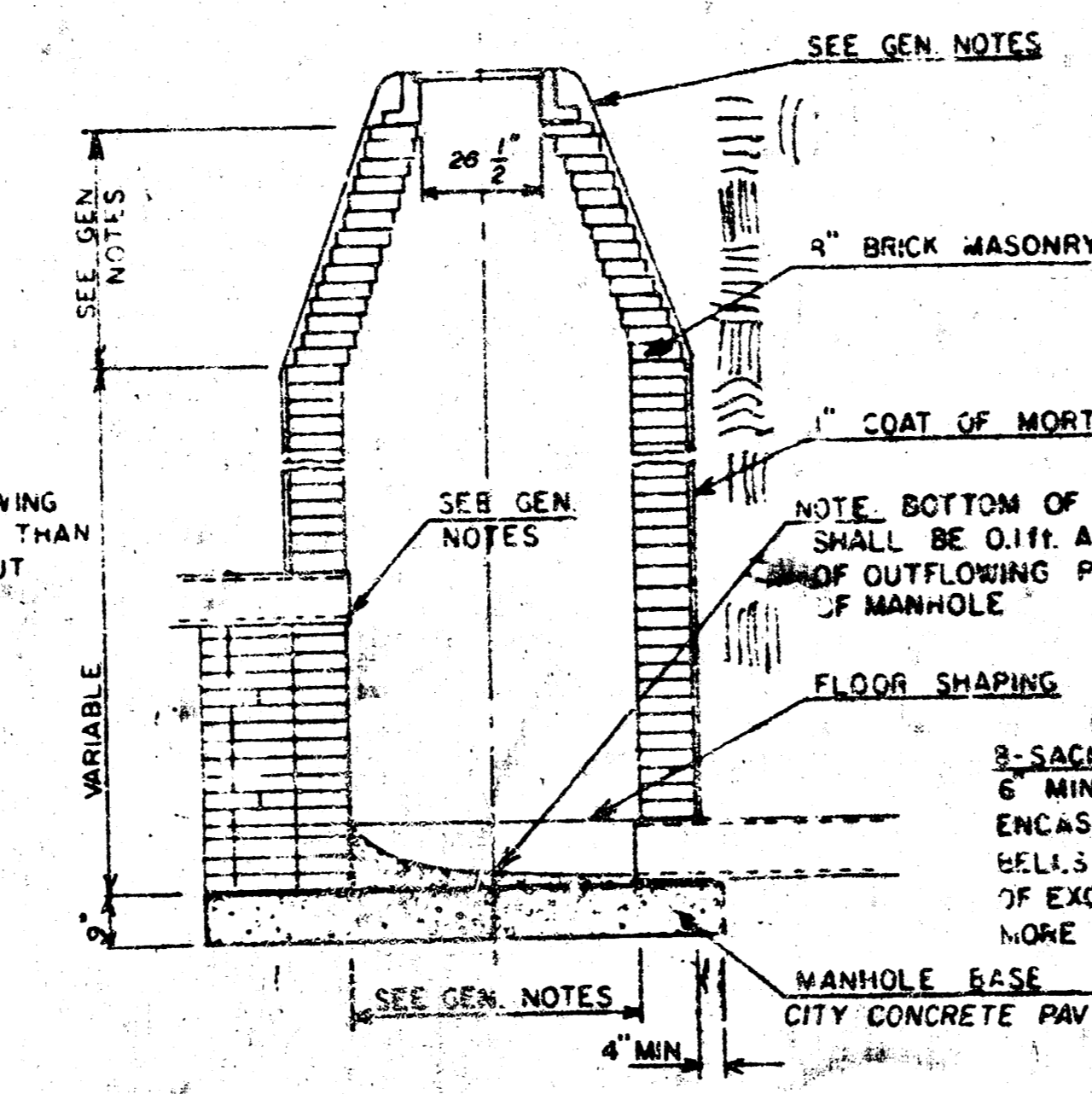
ADOPTED AS STANDARD DESIGN
BY

CITY OF WICHITA, KANSAS

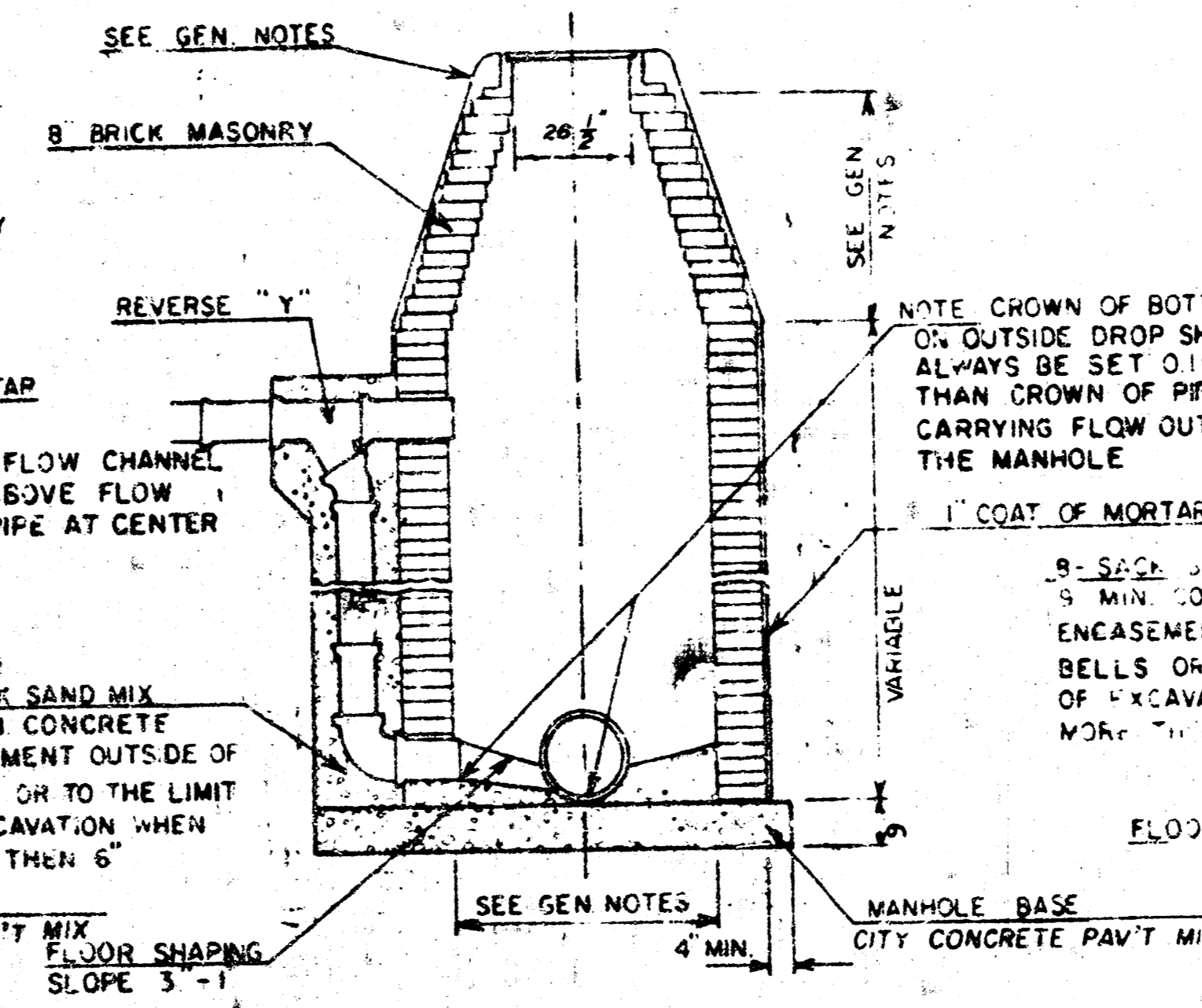
TYPE "A" MANHOLE



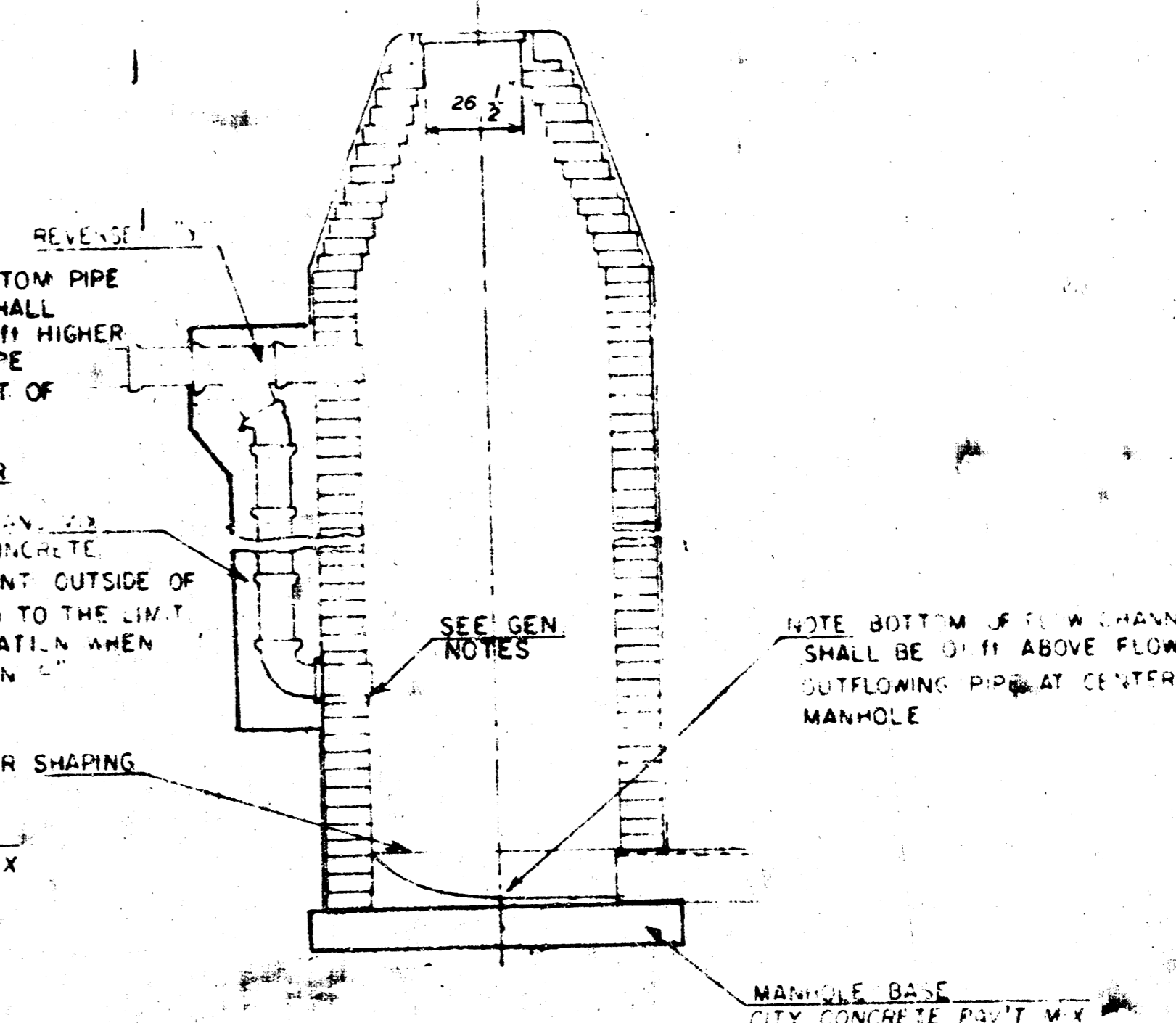
TYPE "A" INSIDE DROP MANHOLE



TYPE "A" OUTSIDE DROP MANHOLE



DETAIL OF OUTSIDE DROP
CONSTRUCTED ON EXISTING MANHOLE



GENERAL NOTES

1. MATERIAL USED IN MASONRY CONSTRUCTION SHALL CONTAIN 8 BAGS OF CEMENT PER CUBIC YARD. CONCRETE USED IN MANHOLE BASES SHALL CONFORM TO THE REQUIREMENTS OF CONCRETE FOR CONCRETE PAVEMENT CONSTRUCTION AS SPECIFIED IN THE CITY STANDARD PAVING SPECIFICATIONS USING CITY CONCRETE PAVEMENT MIX WITHOUT AIR-EMERGING ADMIXTURE. MORTAR SHALL BE PLACED AROUND THE MANHOLE RING AS SHOWN ON THE DRAWINGS WHEN MANHOLES ARE CONSTRUCTED IN UNPAVED AREAS. TYPE "A" MANHOLES CAN BE USED ON SEWERS UP TO 16' IN DEPTH WHEN THE MANHOLE IS NOT LOCATED WITHIN PUBLIC STREET PAVEMENT. MANHOLES CONSTRUCTED WHERE PIPE SIZES ARE SMALLER THAN 24" SHALL HAVE AN INSIDE DIAMETER OF 4". MANHOLES CONSTRUCTED WHERE PIPE SIZES ARE 24" OR LARGER SHALL HAVE AN INSIDE DIAMETER OF 5". THE HEIGHT OF THE CORBELS ON 4" DIAMETER MANHOLES SHALL BE 4". MANHOLES HAVING A DIAMETER OF 5" SHALL HAVE CORBELS 6" IN HEIGHT. COMPLETED MANHOLE SHALL BE WITHOUT LEAKS AND WATER TIGHT.
2. REINFORCING STEEL SHALL BE INSTALLED IN THE MANHOLE BASES AND SHALL CONSIST OF NO. 4 BARS PLACED ON 4" CENTERS "Y" BOTH DIRECTIONS. THE MANHOLE BASE REINFORCEMENT SHALL BE PLACED 5" ABOVE THE BOTTOM OF THE MANHOLE BASE. ALL COSTS FOR FURNISHING AND INSTALLING REINFORCING STEEL SHALL BE INCLUDED IN THE UNIT PRICE BID FOR THE MANHOLE.
3. OPENINGS SHALL BE CUT INTO THE MANHOLE WALL WHEN OUTSIDE DROPS ARE CONSTRUCTED ON EXISTING MANHOLES. SUCH OPENINGS CUT INTO EXISTING MANHOLES SHALL BE AS SMALL AS PRACTICAL TO FACILITATE INSTALLING AND JOINTING THE NEW PIPE IN PLACE. WATERSTOP CASSETS SHALL BE USED WITH S.P.V.C. AND A.B.S. COMPOSITE PIPE. THE NEW PIPE SHALL BE CROWDED INTO THE OPENING USING AN APPROVED WEDGING GROUT FOR THE FULL MANHOLE WALL THICKNESS. THE EXTERIOR OF THE COMPLETED CONNECTION SHALL BE SEALED WITH AN APPROVED BITUMINOUS COATING SUCH THAT THE CONNECTION WILL BE WATER TIGHT. FLOORS OF MANHOLE SHALL BE MODIFIED TO FORM NEW FLOW CHANNEL FOR THE NEW CONNECTION AS INDICATED BY THE DRAWING. THE VERTICAL DROP FROM THE LOWER PIPE ON SUCH OUTSIDE DROP CONNECTIONS SHALL NOT EXCEED 4" FOR INFLOWING PIPES SIZED 12" OR SMALLER AND 2" FOR INFLOWING PIPES SIZED LARGER THAN 12", EXCEPT THE CROWN OF THE LOWER PIPE SHALL NEVER BE SET BELOW THE CROWN OF ANY LARGER OUTFLOWING PIPE. THIS WORK, INCLUDING MODIFICATION OF MANHOLE FLOOR, SHALL BE PAID FOR AT THE UNIT PRICE BID FOR OUTSIDE DROP STACK CONSTRUCTED ON EXISTING MANHOLE.
4. THE FLOORS OF ALL MANHOLES SHALL BE SHAPED WITH FLOW CHANNELS SUCH THAT THE MANHOLES WILL BE SELF-CLEANING AND FREE OF AREAS WHERE SOLIDS COULD BE DEPOSITED AS SEWAGE FLOWS THROUGH THE MANHOLE FROM ALL INLET PIPES TO THE OUTLET PIPE. FLOW CHANNELS SHALL BE FORMED TO MATCH THE BOTTOM HALVES OF THE INFLOWING PIPES AND THE OUTFLOWING PIPE AS SHOWN BY THE DRAWINGS EXCEPT FOR INSIDE DROP MANHOLES. FLOW CHANNELS FOR INSIDE DROP MANHOLES SHALL BE CONSTRUCTED AS INDICATED BY THE DRAWING. MANHOLE FLOORS SHALL HAVE SLOPES OF 3 INCHES PER FOOT IN THE AREAS OUTSIDE OF THE FLOW CHANNELS SLOPED TOWARD THE FLOW CHANNELS. PIPES LAID THROUGH MANHOLES SHALL HAVE THE TOP HALF KEPT MOVED TO HEAT LINES FOR THE FULL INSIDE DIAMETER OF THE MANHOLE. MANHOLE FLOORS SHALL BE SHAPED AROUND THE BOTTOM HALF OF THE PIPE WHICH FORMS THE FLOW CHANNELS.
5. PIPES INSTALLED WITHIN THE EXCAVATION MADE FOR THE MANHOLE SHALL BE CRADLED WITH CONCRETE TO THE LIMITS OF THE MANHOLE EXCAVATION. WHEN CLAY PIPE IS USED, THE CRADLE SHALL EXTEND TO THE FIRST JOINT OUTSIDE THE MANHOLE. THE CRADLE SHALL BE TERMINATED AT THE CLAY PIPE JOINT IN A MANNER WHICH WILL MAINTAIN THE FLEXIBILITY OF THE JOINT. COST OF CRADLE WITHIN MANHOLE EXCAVATION OR TO CLAY PIPE JOINTS ADJACENT TO MANHOLE SHALL BE INCLUDED IN THE UNIT PRICE BID FOR THE MANHOLE.
6. MANHOLE COVER CASTINGS AND MANHOLE FRAME CASTINGS SHALL CONFORM TO THE REQUIREMENTS AS INDICATED IN THE STANDARD SPECIFICATIONS AND AS SHOWN IN THE STANDARD DETAIL DRAWING.
7. THE VERTICAL DROP IN INSIDE DROP MANHOLES SHALL NOT EXCEED 4" FOR INFLOWING PIPES SIZED 12" OR SMALLER AND 2" FOR INFLOWING PIPES LARGER THAN 12". THE CROWNS OF INFLOWING PIPES SHALL NEVER BE SET LOWER THAN THE CROWN OF THE OUTFLOWING PIPE.
8. STANDARD MANHOLES TYPE "A" AND STANDARD INSIDE DROP MANHOLES TYPE "A" SHALL BE BID AS STANDARD MANHOLES FOR THE TYPE AND DIAMETER INDICATED. OUTSIDE DROP MANHOLES TYPE "A" SHALL BE BID AS STANDARD OUTSIDE DROP MANHOLES FOR THE TYPE AND DIAMETER INDICATED. ALL MANHOLE DIAMETERS WILL BE 4' UNLESS INDICATED OTHERWISE.

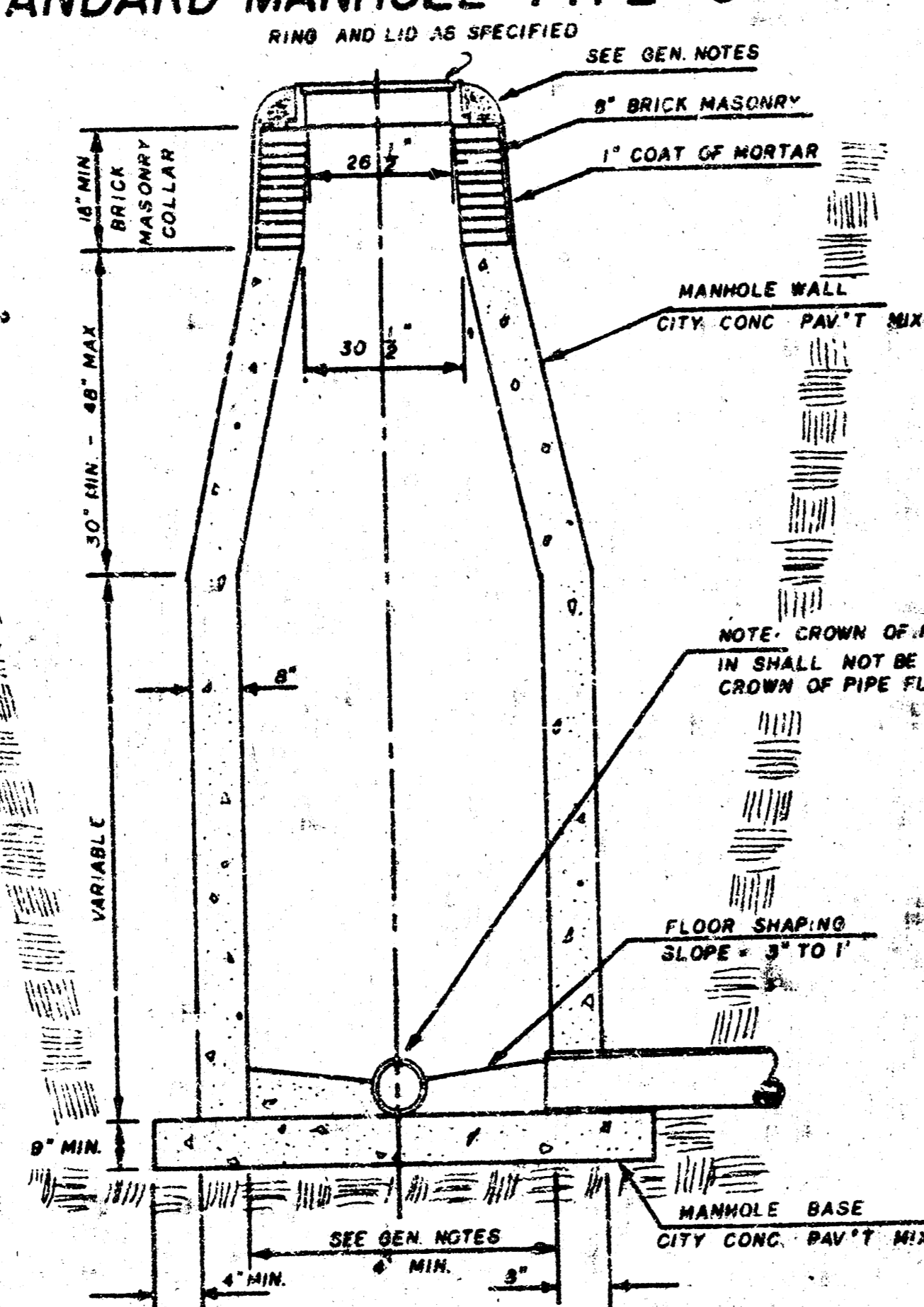
SEWER APPURTENANCES DETAILS

ADOPTED AS STANDARD DESIGN

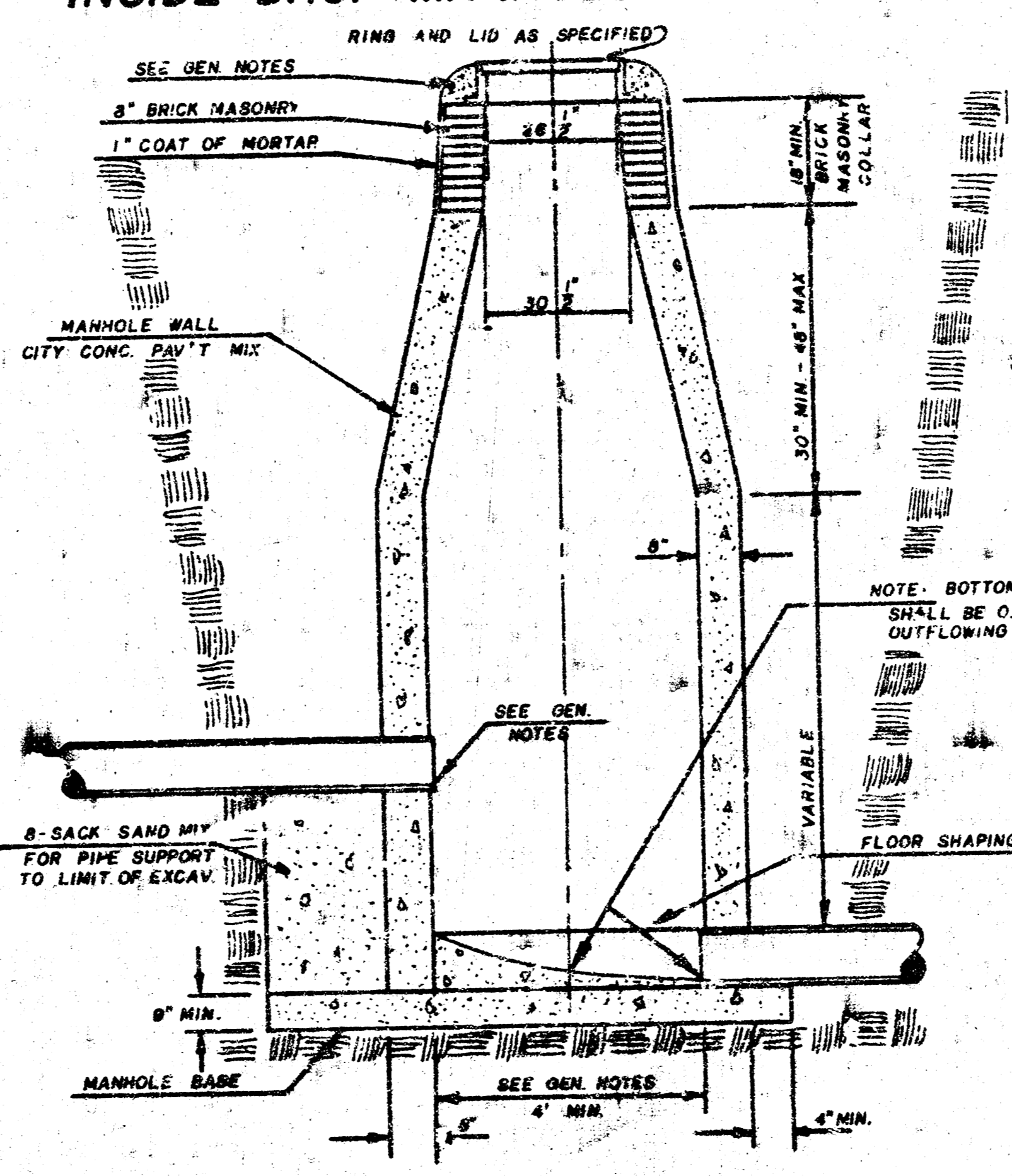
BY

City of Wichita, Kansas

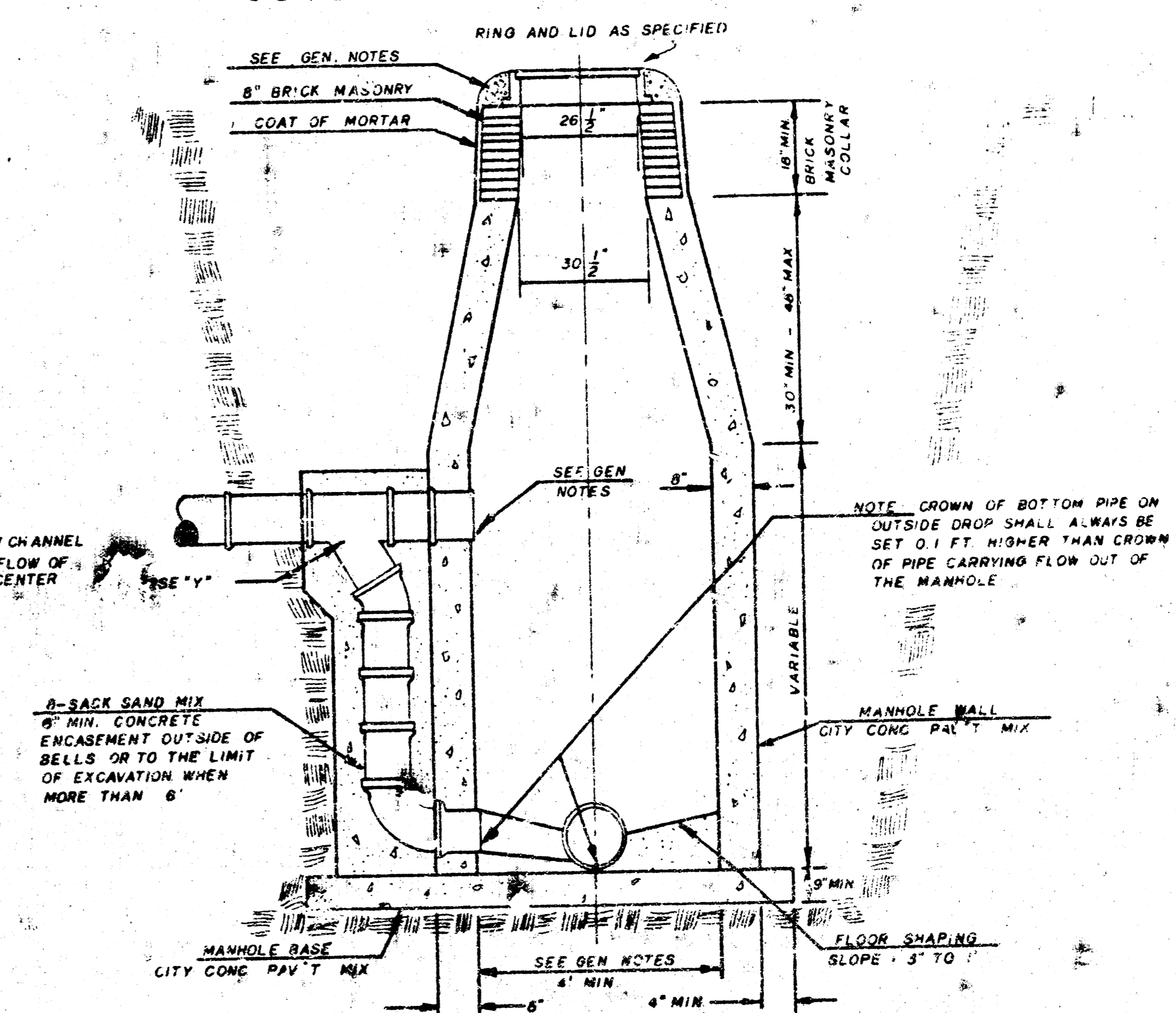
STANDARD MANHOLE TYPE "C"



INSIDE DROP MANHOLE TYPE "C"



OUTSIDE DROP MANHOLE TYPE "C"



GENERAL NOTES

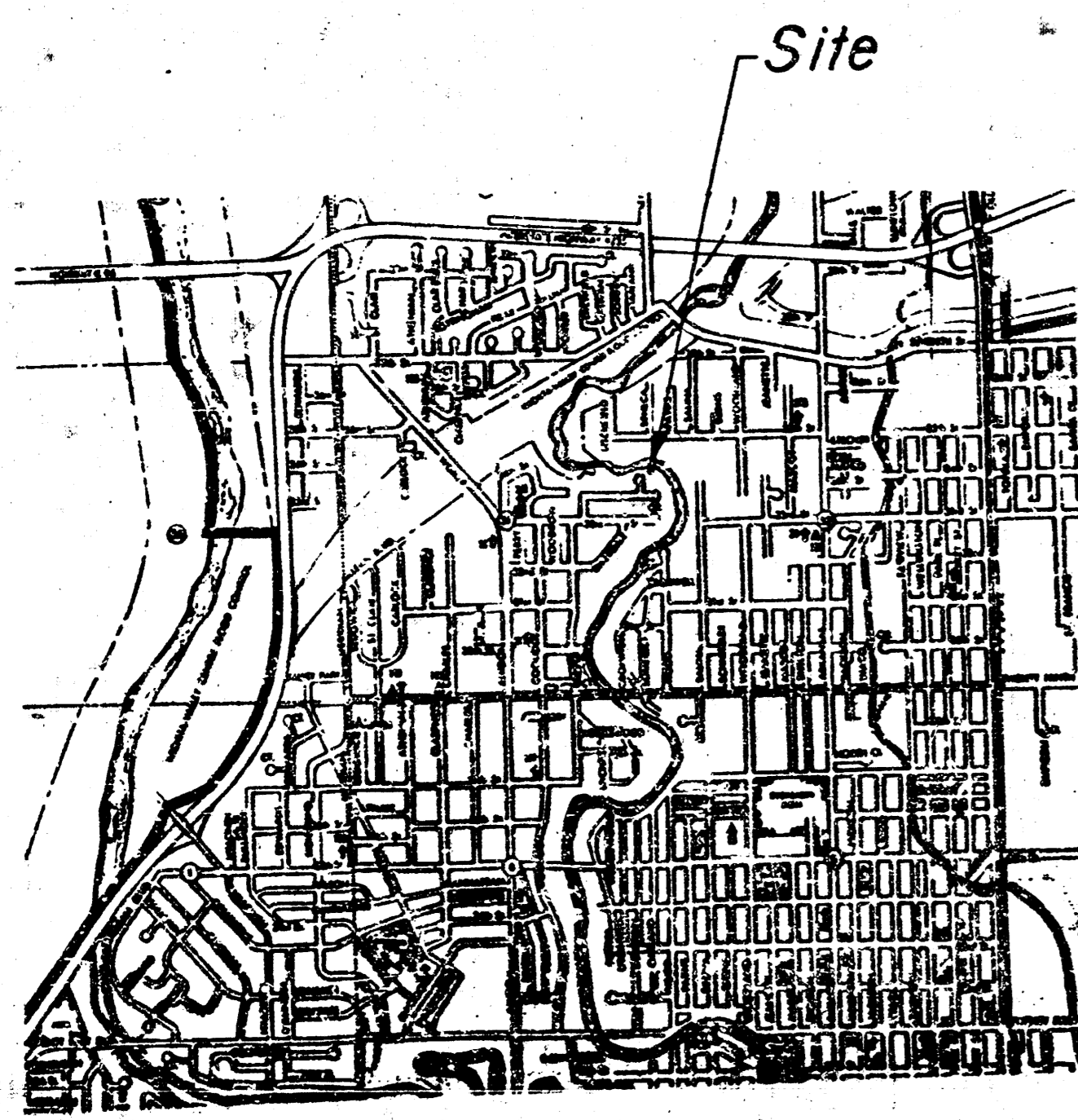
- MORTAR USED IN MASONRY CONSTRUCTION SHALL CONTAIN 8 SACKS OF CEMENT PER CUBIC YARD. CONCRETE USED IN MANHOLE WALLS AND BASES SHALL CONFORM TO THE REQUIREMENTS OF CONCRETE FOR CONCRETE PAVEMENT CONSTRUCTION AS SPECIFIED IN THE CITY STANDARD PAVING SPECIFICATIONS USING CITY CONCRETE PAVEMENT MIX WITHOUT AIR ENTRAINING AD MIXTURE. MORTAR SHALL BE PLACED AROUND THE MANHOLE RING AS SHOWN ON THE DRAWINGS WHEN MANHOLES ARE CONSTRUCTED IN UNPAVED AREAS. TYPE "C" MANHOLES CAN BE CONSTRUCTED ONLY WHERE PIPE SIZES ARE 8" OR SMALLER. THE INSIDE DIAMETER OF TYPE "C" MANHOLES SHALL BE 42" FOR COMPLETED MANHOLE SHALL BE WITHOUT LEAKS AND WATER TIGHT.
- REINFORCING STEEL SHALL BE INSTALLED IN THE MANHOLE BASE. REINFORCING STEEL SHALL CONSIST OF NO. 4 BARS PLACED ON 6" CENTERS IN BOTH DIRECTIONS. REINFORCING STEEL SHALL BE PLACED 6" ABOVE THE BOTTOM OF THE MANHOLE BASE. COST OF FURNISHING AND INSTALLING REINFORCING STEEL SHALL BE INCLUDED IN THE UNIT PRICE BID FOR THE MANHOLE.
- AN OPENING SHALL BE CUT IN THE MANHOLE WALL FOR THE UPPER INLET PIPE FOR INSIDE AND OUTSIDE DROP MANHOLES. THE UPPER INLET PIPE SHALL BE GROUTED INTO THIS OPENING WITH NON-SHRINK GROUT. THE EXTERIOR OF THIS COMPLETED CONNECTION SHALL BE SEALED WITH AN APPROVED BITUMINOUS COATING SUCH THAT THE CONNECTION WILL BE WATER TIGHT.
- THE FLOORS OF ALL MANHOLES SHALL BE SLOPED WITH FLOW CHANNELS SUCH THAT THE MANHOLES WILL BE SELF CLEANING AND FREE OF AREAS WHERE SOLIDS COULD BE DEPOSITED AS SEWAGE FLOWS THROUGH THE MANHOLE FROM ALL INLET PIPES TO THE OUTLET PIPE. FLOW CHANNELS SHALL BE FORMED WITH THE BOTTOM HALVES OF THE INFLOWING PIPES AND THE OUTFLOWING PIPE AS SHOWN ON THE DRAWINGS EXCEPT FOR INSIDE DROP MANHOLES. FLOW CHANNELS FOR INSIDE DROP MANHOLES SHALL BE CONSTRUCTED AS INDICATED BY THE DRAWING. MANHOLE FLOORS SHALL HAVE SLOPES OF 3 INCHES PER FOOT IN THE AREAS OUTSIDE OF THE FLOW CHANNELS. PIPES LAID THROUGH MANHOLES SHALL HAVE THE TOP HALF REMOVED TO NEAT LINES FOR THE FULL INSIDE DIAMETER OF THE MANHOLE. MANHOLE FLOORS SHALL THEN BE SHAPED AROUND THE BOTTOM HALF OF THE PIPE WHICH FORMS THE FLOW CHANNEL.
- PIPES INSTALLED WITHIN THE EXCAVATION MADE FOR THE MANHOLE SHALL BE GRADED WITH CONCRETE TO THE LIMITS OF THE MANHOLE EXCAVATION. WHEN CLAY PIPE IS USED, THE GRADES SHALL EXTEND TO THE FIRST JOINT OUTSIDE THE MANHOLE. THE CRADLE SHALL BE TERMINATED AT THE CLAY PIPE JOINT IN A MANNER WHICH WILL MAINTAIN THE FLEXIBILITY OF THE JOINT. COST OF CRADLE WITHIN MANHOLE EXCAVATION OR TO CLAY PIPE JOINTS ADJACENT TO MANHOLE SHALL BE INCLUDED IN THE UNIT PRICE BID FOR THE MANHOLE.
- MANHOLE COVER CASTINGS AND MANHOLE FRAME CASTINGS SHALL CONFORM TO THE REQUIREMENTS AS INDICATED IN THE STANDARD SPECIFICATIONS AND AS SHOWN IN THE STANDARD DETAIL DRAWING.
- THE VERTICAL DROP IN INSIDE DROP MANHOLES SHALL NOT EXCEED 4' FOR INFLOWING PIPES SIZED 12" OR SMALLER AND 2' FOR INFLOWING PIPES LARGER THAN 12". THE CROWNS OF INFLOWING PIPES SHALL NEVER BE SET LOWER THAN THE CROWN OF THE OUTFLOWING PIPE.
- STANDARD MANHOLES TYPE "C" AND STANDARD INSIDE DROP MANHOLES TYPE "C" SHALL BE BID AS STANDARD MANHOLES FOR THE TYPE AND DIAMETER INDICATED. OUTSIDE DROP MANHOLES TYPE "C" SHALL BE BID AS STANDARD OUTSIDE DROP MANHOLES FOR THE TYPE AND DIAMETER INDICATED. ALL MANHOLE DIAMETERS WILL BE 4' UNLESS INDICATED OTHERWISE.

**LATERAL 69, MAIN 17, SANITARY SEWER No. 22
INCLUDING LIFT STATION**

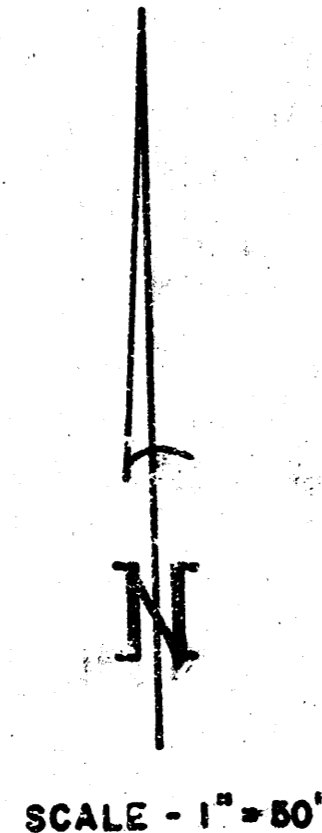
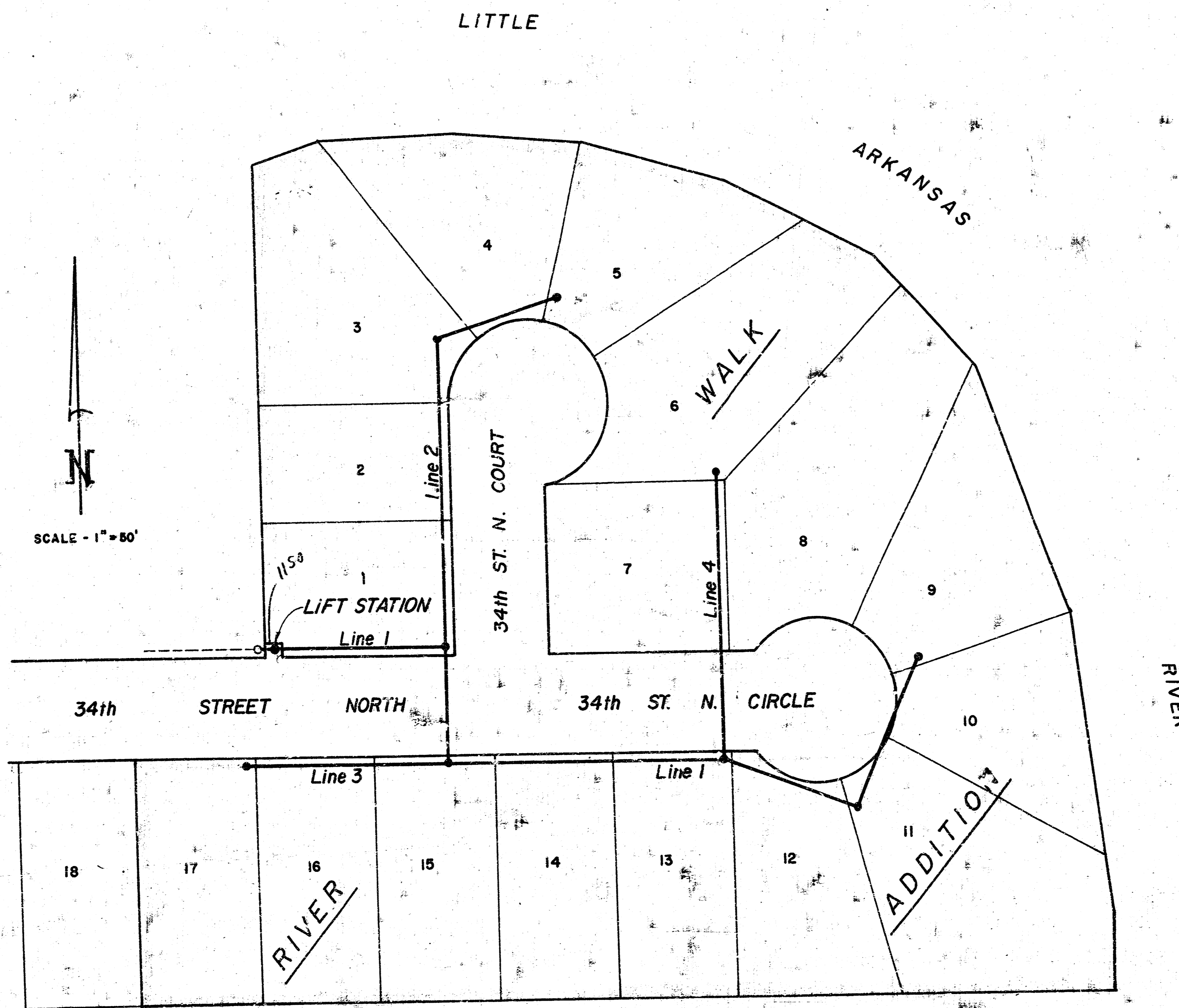
Project no. 468-76-245-81255-000-000-001

RIVER WALK ADDITION

CITY OF WICHITA, KANSAS
MIKE LINDEBAK CITY ENGINEER



Location Map



*Rod
See me before
Booking this.
Chris*

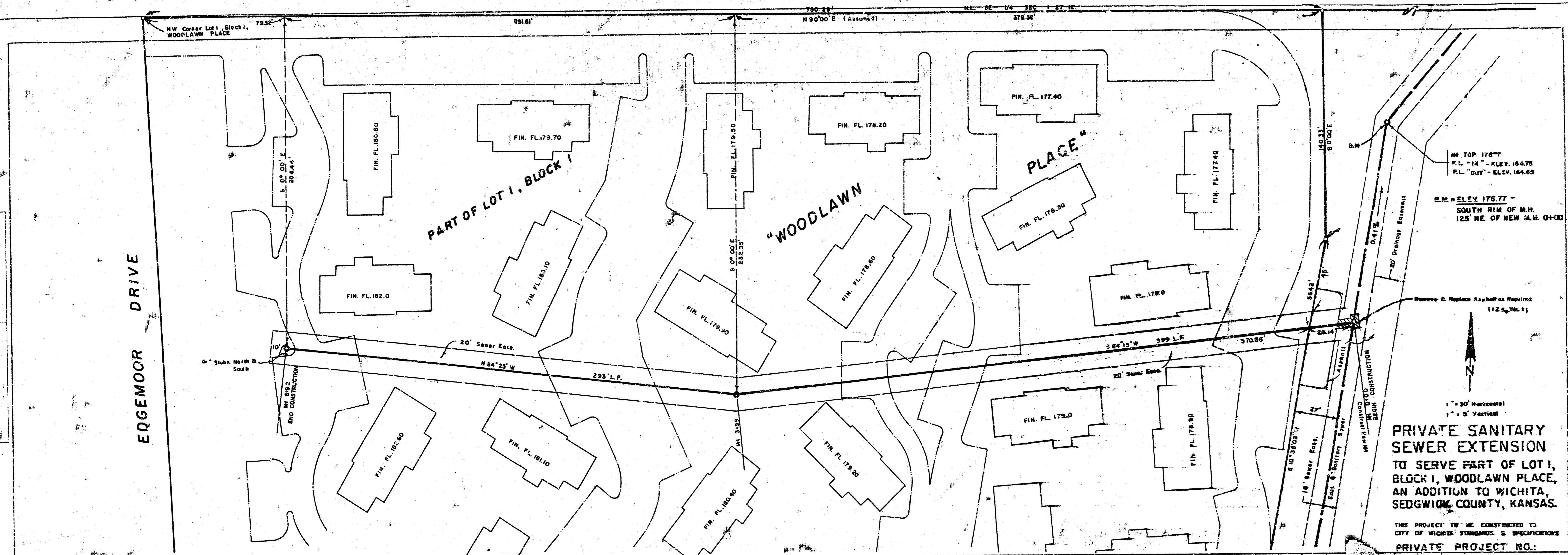
NOTE -
THE CONTRACTOR IS TO BE RESPONSIBLE FOR THE FEE COST TO GAS SERVICE
CO. FOR THE METER AND THE PUMP STATION LOCATION.
THE CONTRACTOR IS RESPONSIBLE FOR THE COST OF TWO SEPARATE
PHASE GENERATORS. ONE IS TO BE HOOKED UP
WITH THE CITY OF WICHITA DELIVERED TO THE CITY



BAUGHMAN COMPANY, P.A.
SURVEYING & ENGINEERING
314/242-7371 • 330 LANZA • WICHITA, KANSAS 67211

DATE: 2/4
 PLAN
 SHEET NO. 24
 PROJECT: WOODLAWN PLACE
 PART OF LOT 1, BLOCK 1

DATE: 2/4
 PROFILE
 SHEET NO. 24
 PROJECT: WOODLAWN PLACE
 PART OF LOT 1, BLOCK 1



M. TOP 176.77
 F.L. "IN" - ELEV. 164.79
 F.L. "OUT" - ELEV. 164.85
 B.M. - ELEV. 176.77 -
 SOUTH RIM OF M.M.
 125' NE OF NEW M.H. 0+00



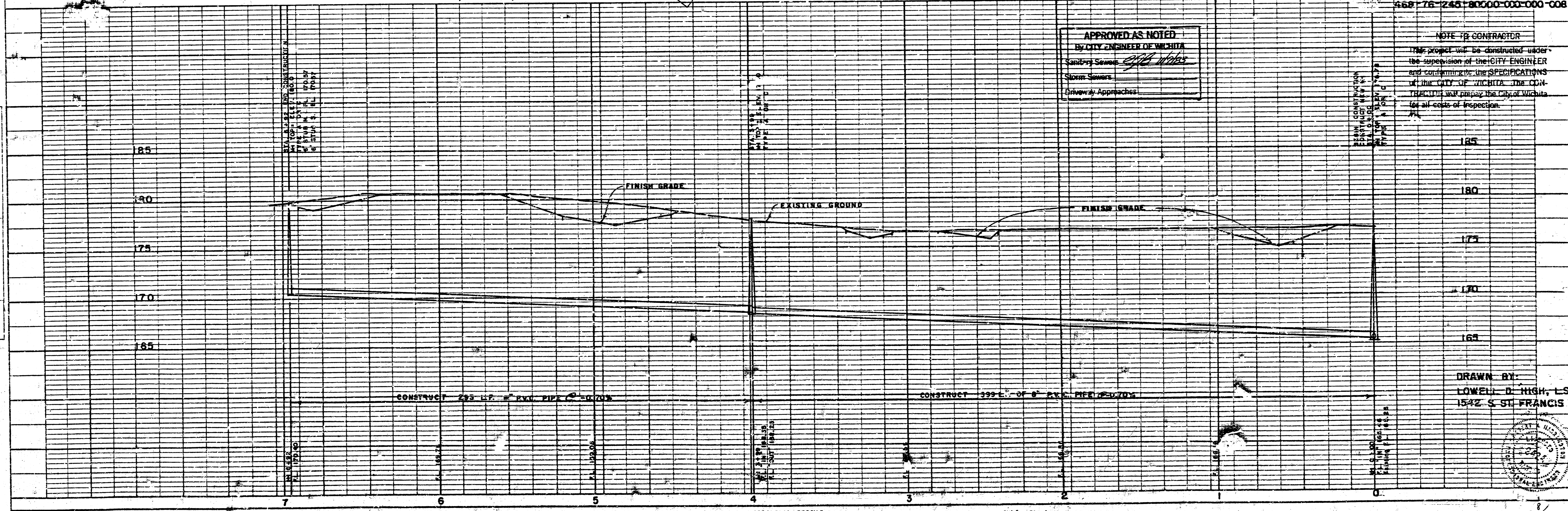
1" = 30' Horizontal
 1" = 5' Vertical

PRIVATE SANITARY SEWER EXTENSION TO SERVE PART OF LOT 1, BLOCK 1, WOODLAWN PLACE, AN ADDITION TO WICHITA, SEDGWICK COUNTY, KANSAS.

THE PROJECT TO BE CONSTRUCTED TO CITY OF WICHITA STANDARDS & SPECIFICATIONS
 PRIVATE PROJECT NO.: 468776-1245-80000-000-008

APPROVED AS NOTED
 BY CITY ENGINEER OF WICHITA
 Sanitary Sewers: *Edith Weber*
 Storm Sewers:
 Driveway Approaches:

NOTE TO CONTRACTOR
 THIS PROJECT WILL BE CONSTRUCTED UNDER THE SUPERVISION OF THE CITY ENGINEER AND CONTRACTOR TO THE SPECIFICATIONS OF THE CITY OF WICHITA. THE CONTRACTOR WILL PREPAY THE CITY OF WICHITA FOR ALL COSTS OF INSPECTION.



DRAWN BY:
 LOWELL D. HIGH, L.S.
 1542 S. ST. FRANCIS

