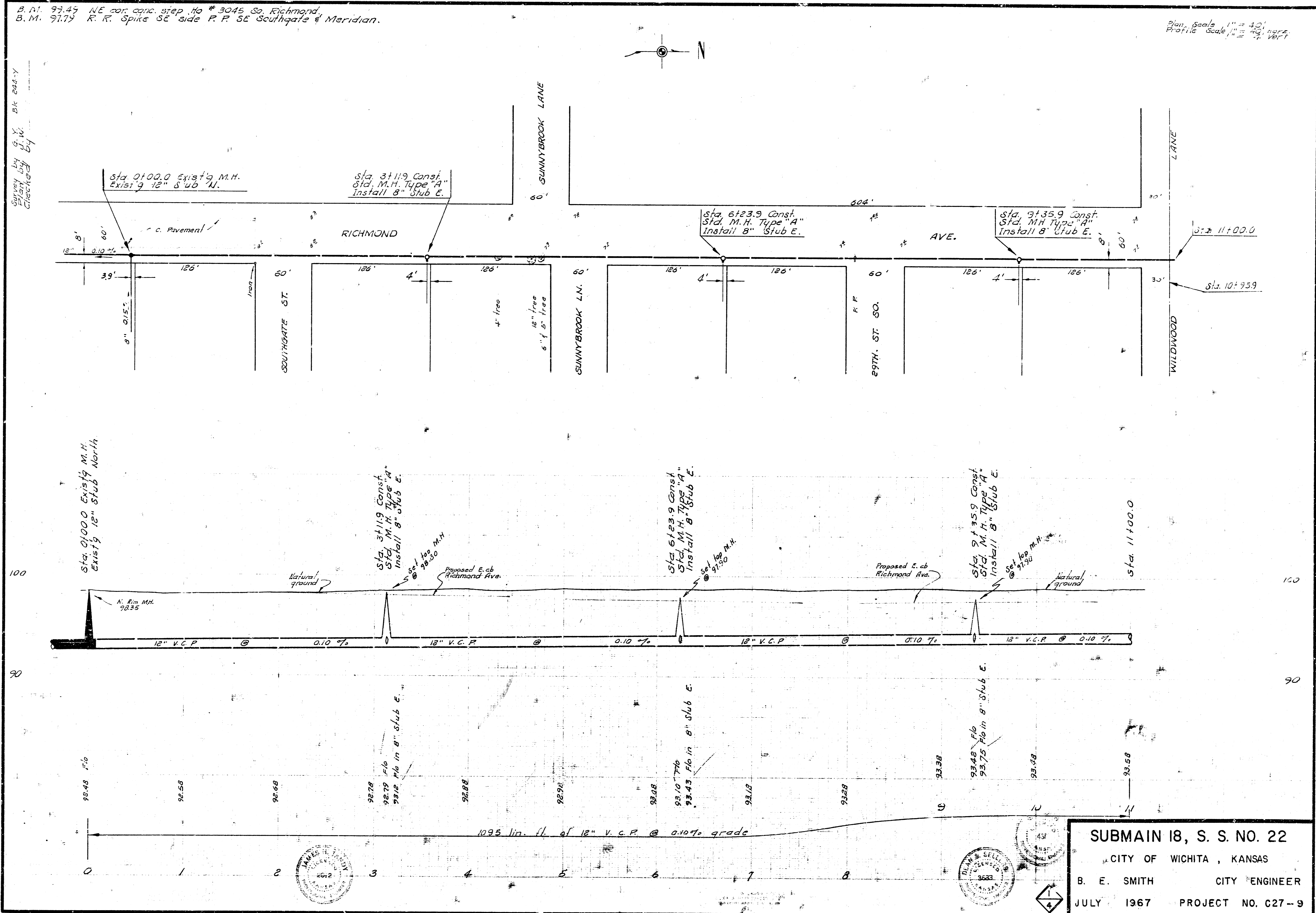


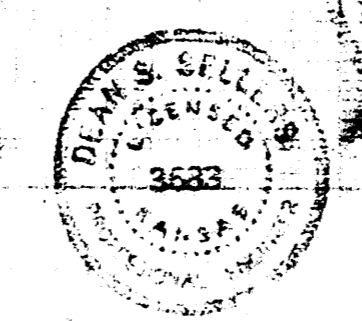
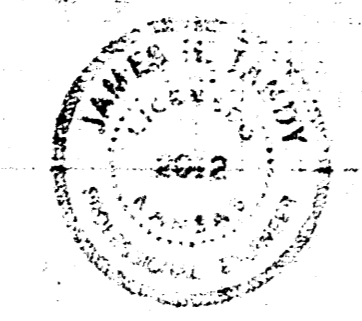
B.M. 93.45 NE cor. conc. step No # 3045 So. Richmond
 B.M. 97.79 R. R. Spike SE side P.P. SE Southgate & Meridian.

Plan Scale 1" = 40'
 Profile Scale 1" = 10' vert

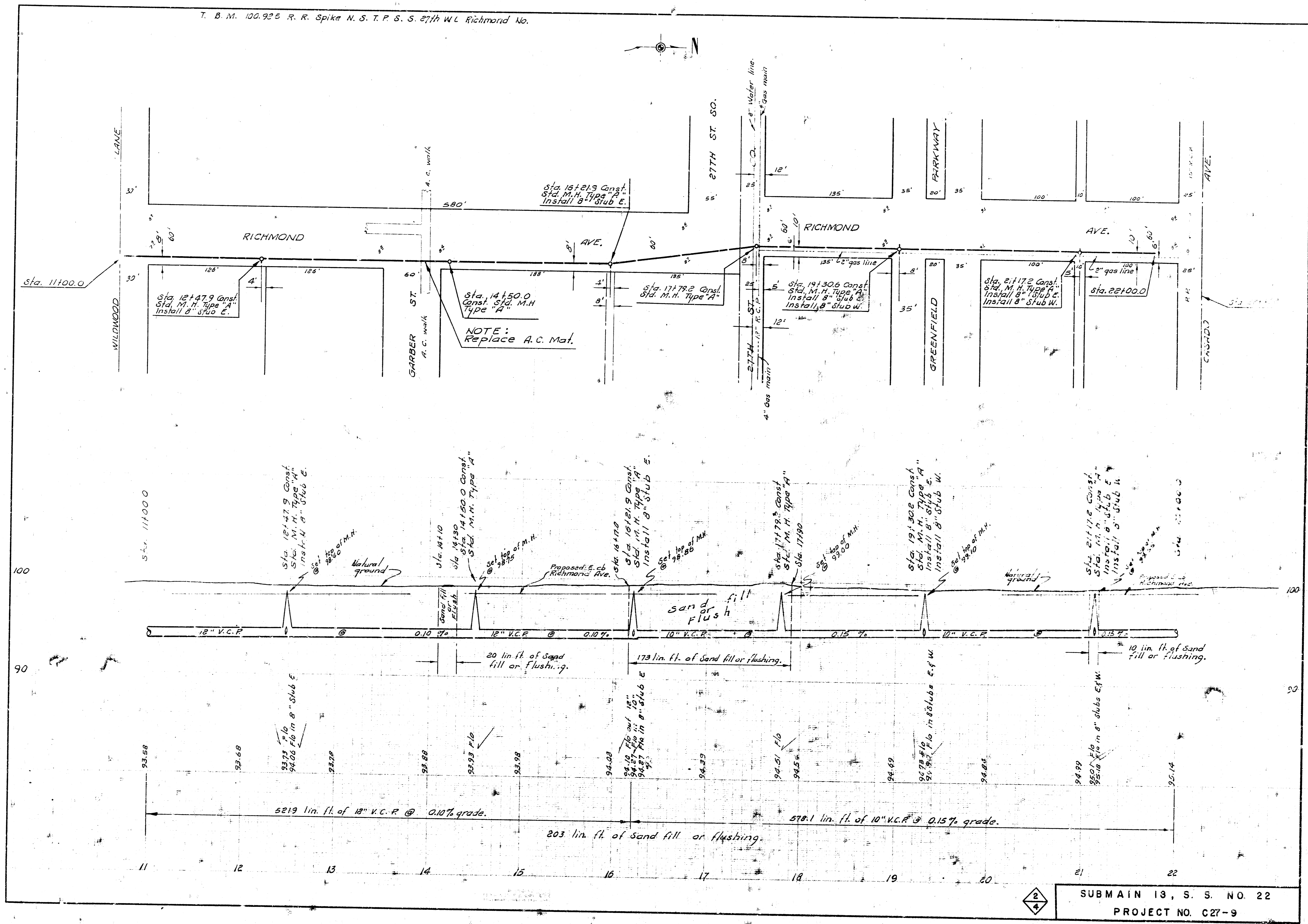
Survey by G.V. & W. Clark
 Checked by



SUBMAIN 18, S. S. NO. 22
 CITY OF WICHITA, KANSAS
 B. E. SMITH CITY ENGINEER
 JULY 1967 PROJECT NO. C27-9



T. B. M. 100.925 R. R. Spike N. S. T. P. S. S. 27th W.L. Richmond No.



Sta. 11+00.0

Sta. 11+00.0

100

90

93.58

93.68

93.78

93.88

Sta. 12+47.9 Const. Sta. M.H. Type "A" Install 8" Stub E.

Sta. 12+47.9 Const. Sta. M.H. Type "A" Install 8" Stub E.

12" V.C.P.

20 lin. ft. of Sand fill or flushing.

93.78

93.88

93.98

94.08

Sta. 14+50.0 Const. Sta. M.H. Type "A"

Sta. 14+50.0 Const. Sta. M.H. Type "A"

12" V.C.P.

173 lin. ft. of Sand fill or flushing.

94.08

94.18

94.28

94.38

Sta. 17+78.2 Const. Sta. M.H. Type "A"

Sta. 17+78.2 Const. Sta. M.H. Type "A"

10" V.C.P.

10" V.C.P.

94.38

94.48

94.58

94.68

Sta. 19+30.6 Const. Sta. M.H. Type "A" Install 8" Stub W.

Sta. 19+30.6 Const. Sta. M.H. Type "A" Install 8" Stub W.

10" V.C.P.

10" V.C.P.

94.68

94.78

94.88

94.98

Sta. 21+17.2 Const. Sta. M.H. Type "A" Install 8" Stub W.

Sta. 21+17.2 Const. Sta. M.H. Type "A" Install 8" Stub W.

10" V.C.P.

10 lin. ft. of Sand fill or flushing.

94.98

95.08

95.18

95.28

Sta. 22+00.0

Sta. 22+00.0

10" V.C.P.

10" V.C.P.

95.28

95.38

95.48

95.58

Sta. 11+00.0

Sta. 11+00.0

100

90

93.58

93.68

93.78

93.88

Sta. 12+47.9

Sta. 12+47.9

100

90

93.58

93.68

93.78

93.88

Sta. 14+50.0

Sta. 14+50.0

100

90

93.58

93.68

93.78

93.88

Sta. 17+78.2

Sta. 17+78.2

100

90

93.58

93.68

93.78

93.88

Sta. 19+30.6

Sta. 19+30.6

100

90

93.58

93.68

93.78

93.88

Sta. 21+17.2

Sta. 21+17.2

100

90

93.58

93.68

93.78

93.88

Sta. 22+00.0

Sta. 22+00.0

100

90

93.58

93.68

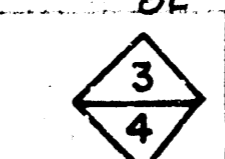
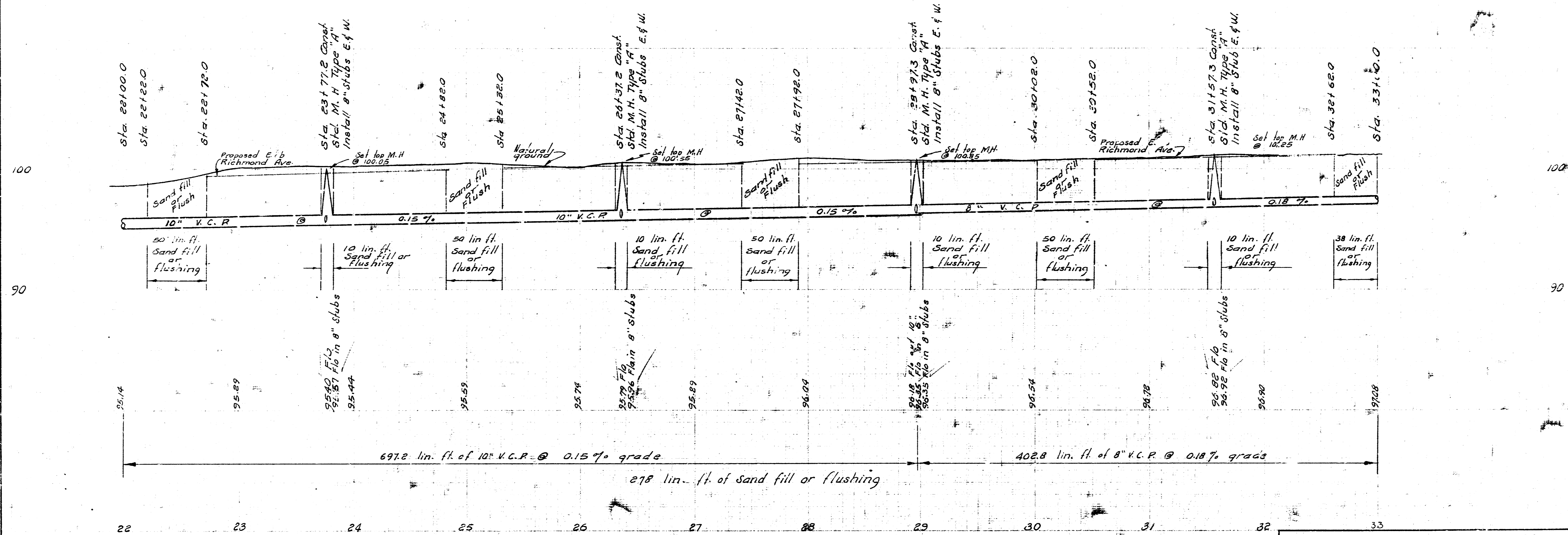
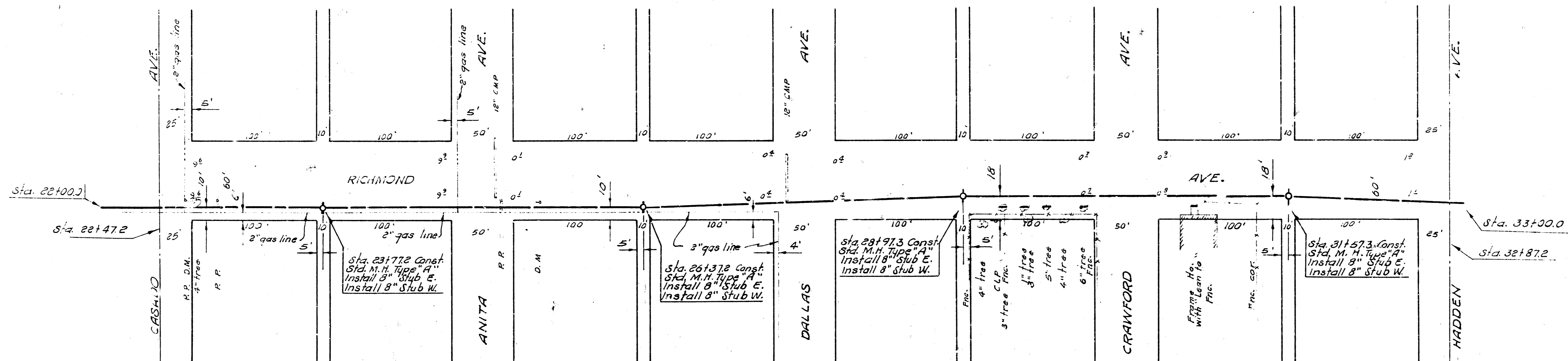
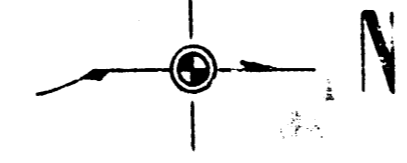
93.78

93.88

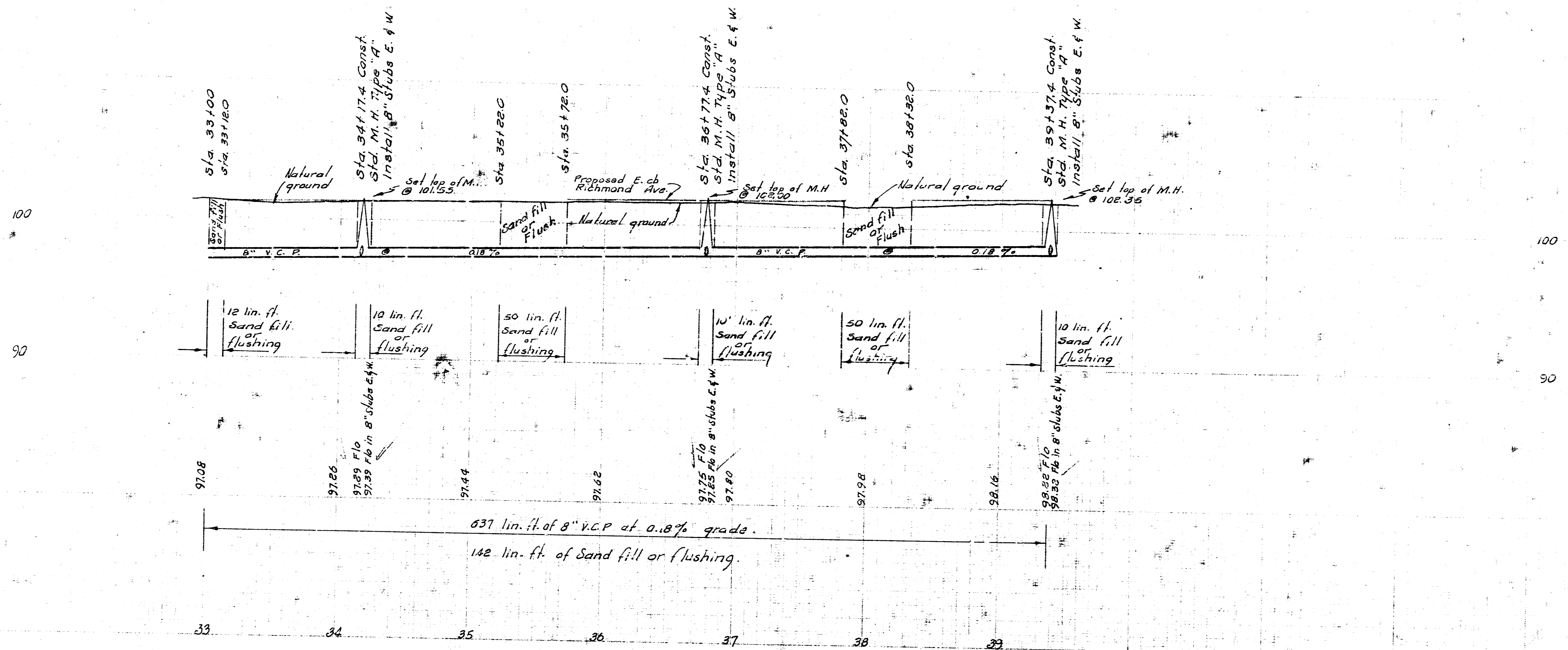
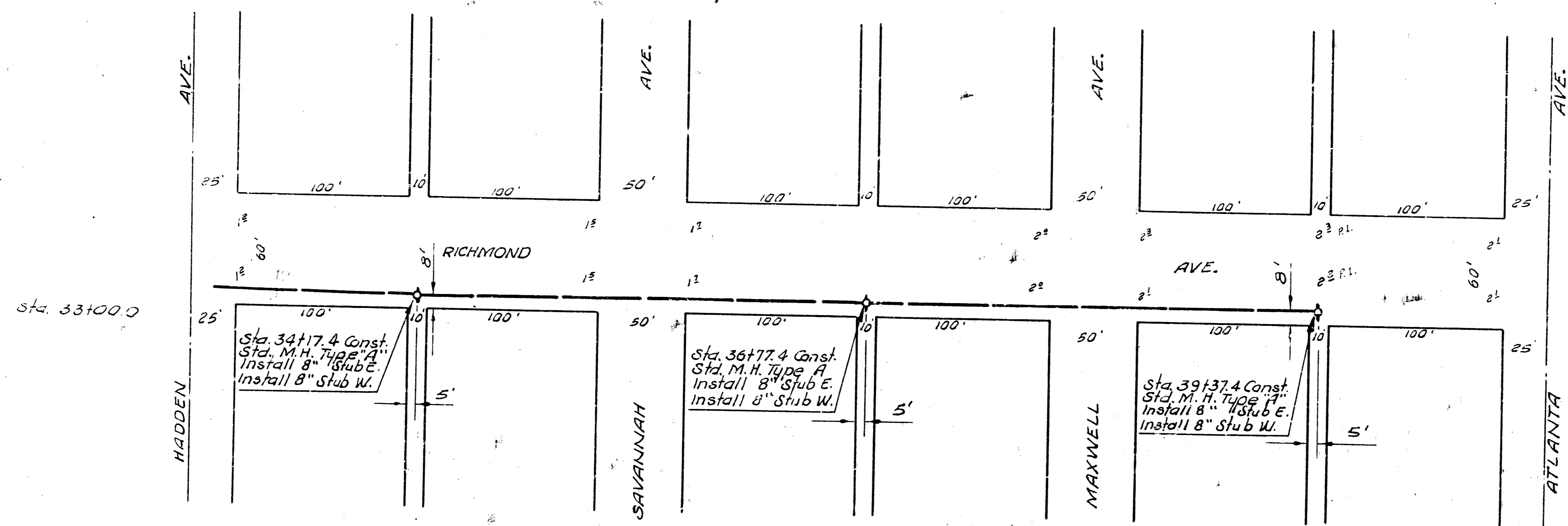
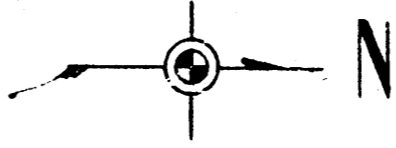
SUBMAIN 13, S. S. NO. 22
PROJECT NO. C27-9

T. B. M. 100.725 Step bench SE Side P.P. 100' S. of Dallas W. S. Richmond.

T. B. M. 101.35 Step bench E.S. P.P. S.W. Richmond & Crawford.



SUBMAIN 18, S. S. NO. 22
PROJECT NO. C27-9



SUBMAIN 18, S. S. NO. 22
PROJECT NO. C27-9