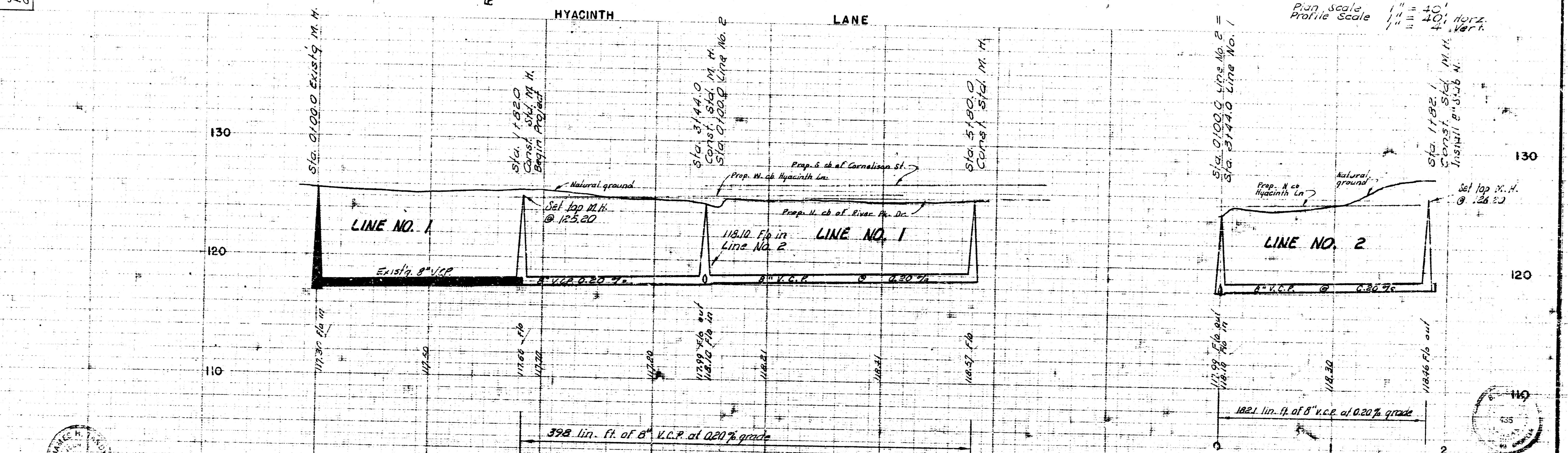
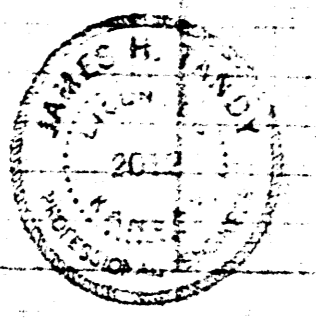


B. M. 125.23 R. P. Spike N. Side P. Pole on E. Side River Park Dr approx. 140' W. of W. L. Hyacinth Lane.
 B. M. 125.13 R. P. Spike on W. side P. Pole N. Side Cornelison approx. 152' W. of W. L. Hyacinth Lane.

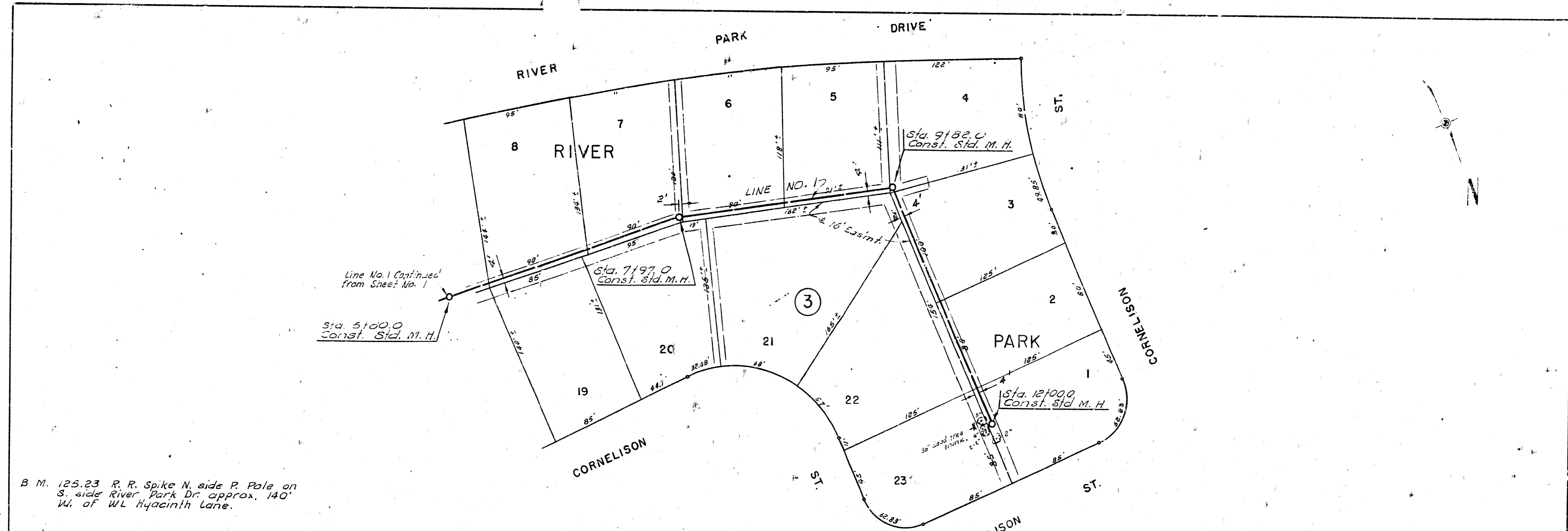
Survey by U.F.G. Book No. - U.F.G. 109
 Plan by U.F.G.
 Checked by _____ Date _____



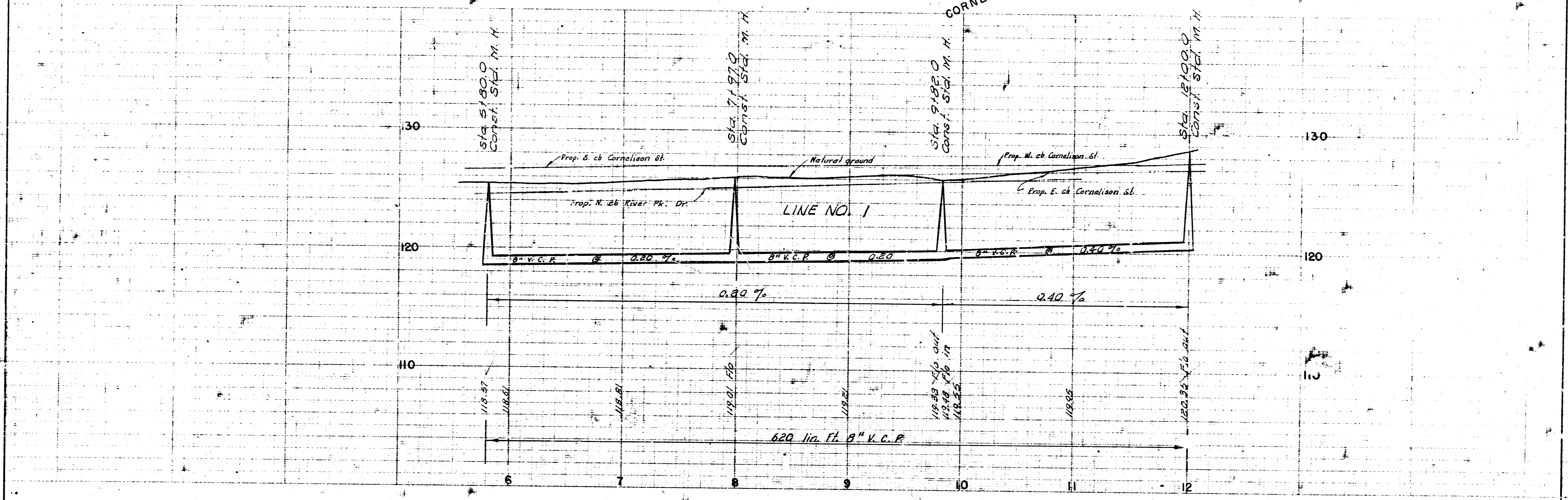
Plan Scale 1" = 40'
 Profile Scale 1" = 10' Vert.



LAT. 2, SUBMAIN 19, S. S. NO. 22
 CITY OF WICHITA, KANSAS
 B. E. SMITH CITY ENGINEER
 APRIL 1965 PROJECT NO. C24-12
 SHEET NO. 1 OF 2



B. M. 125.23 R. R. Spike N. side P. Pole on S. side River Park Dr. approx. 140' W. of W.L. Hyacinth Lane.



L. A. T. 2, SUBMAIN 19, S. S. NC. 22
 PROJECT NO. G-4-12
 SHEET NO. 2 OF 2

6 11 5 (3)