

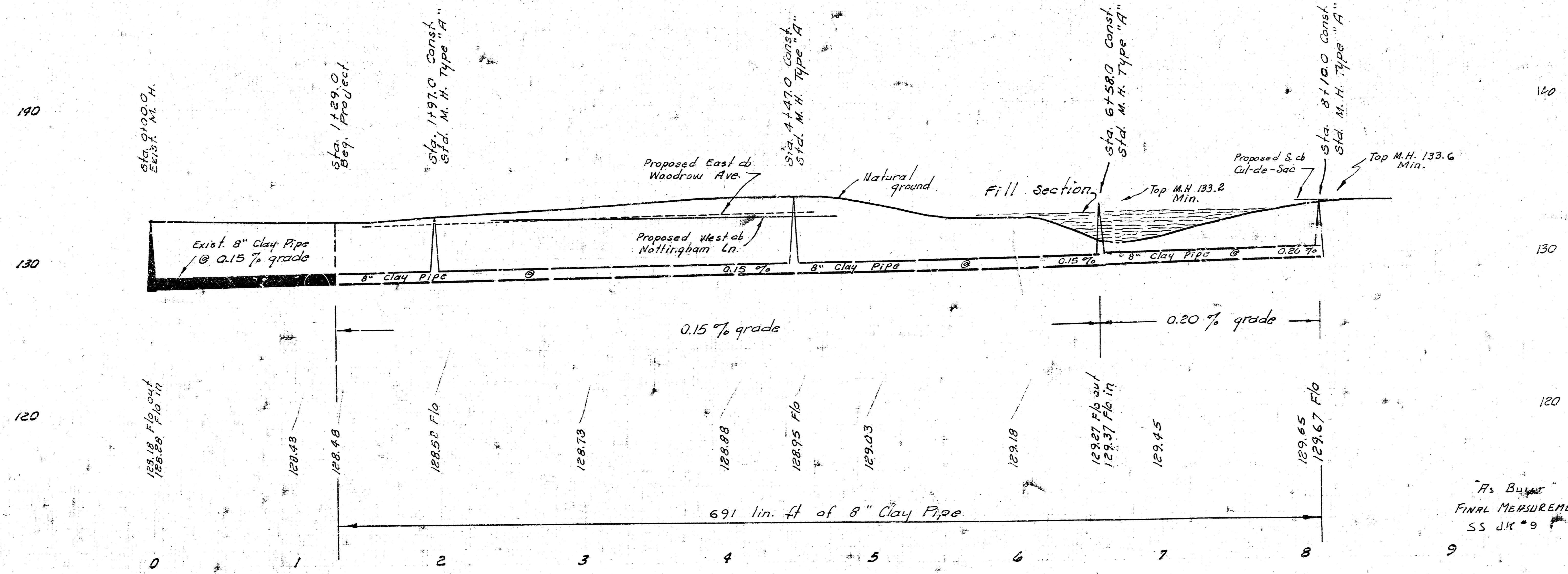
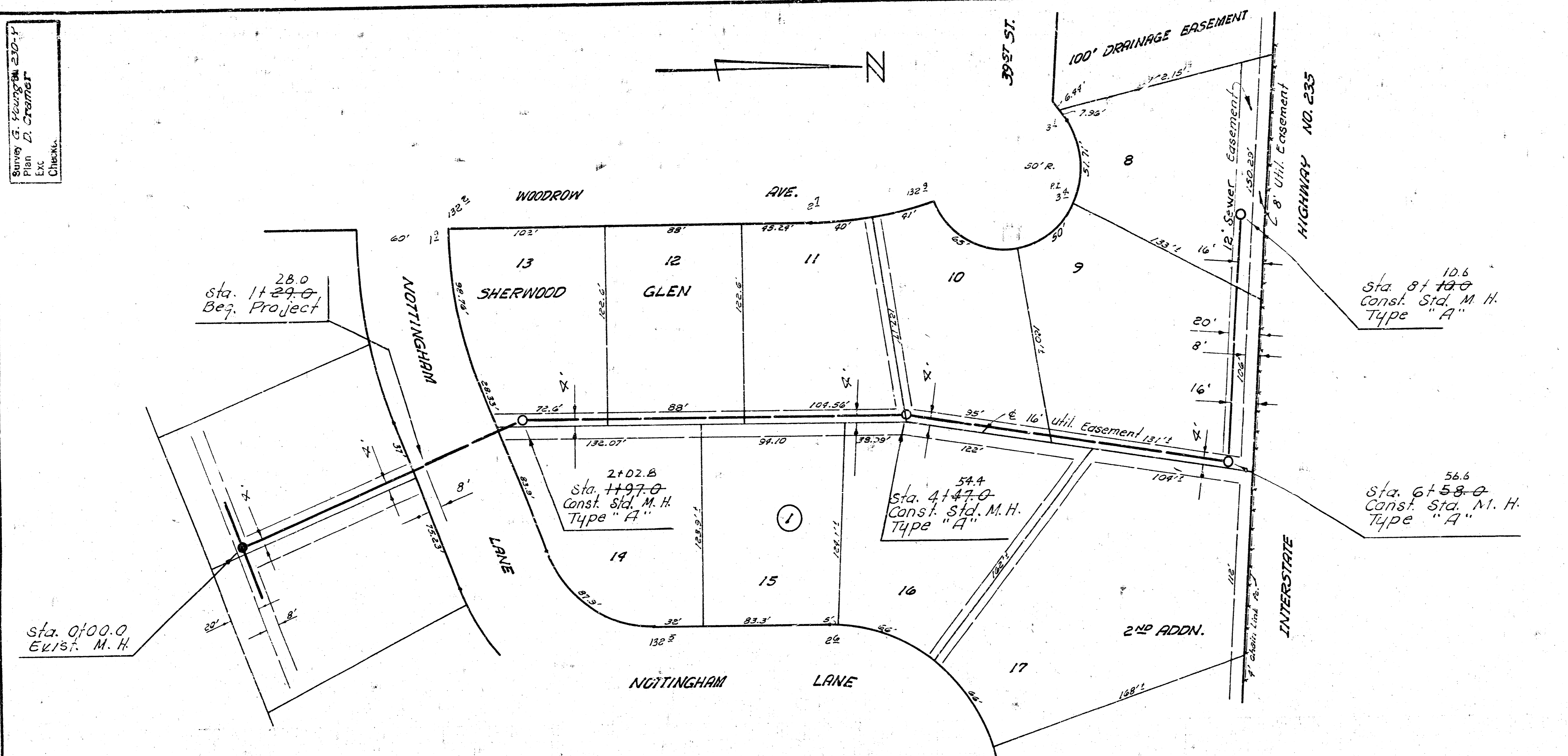
Survey of Easements 2104
 Plan D. Check
 Ex. Check
 Checks

B. N. 135.03 60' Spkr. E. S. R. P.
 W. S. Amidon @ S. L. 39th St. No. east.
 S. M. 135.33 SE cor. Step No. #
 3841 Friar Lane.
 S. M. 131.95 N. Rim M. H. in
 Woodrow Ave. North side
 of 37th St. North.

NOTE:
 Contractor to construct fill over
 sewer as required to maintain a
 minimum of 30 inches of cover.
 All work necessary to provide a
 minimum of 30 inches of cover
 shall be considered as subsidiary.



Plan Scale 1"=40'
 Profile Scale 1"=40' Hor.
 1"=4' Vert.



As Buyer
 FINAL MEASUREMENTS
 SS dk #9

LATERAL 23, MAIN 21, S.S. NO. 22
 CITY OF WICHITA, KANSAS
 B.E. SMITH, CITY ENGINEER
 PROJ. NO. DBKLS71015
 DATE: NOV. 1972