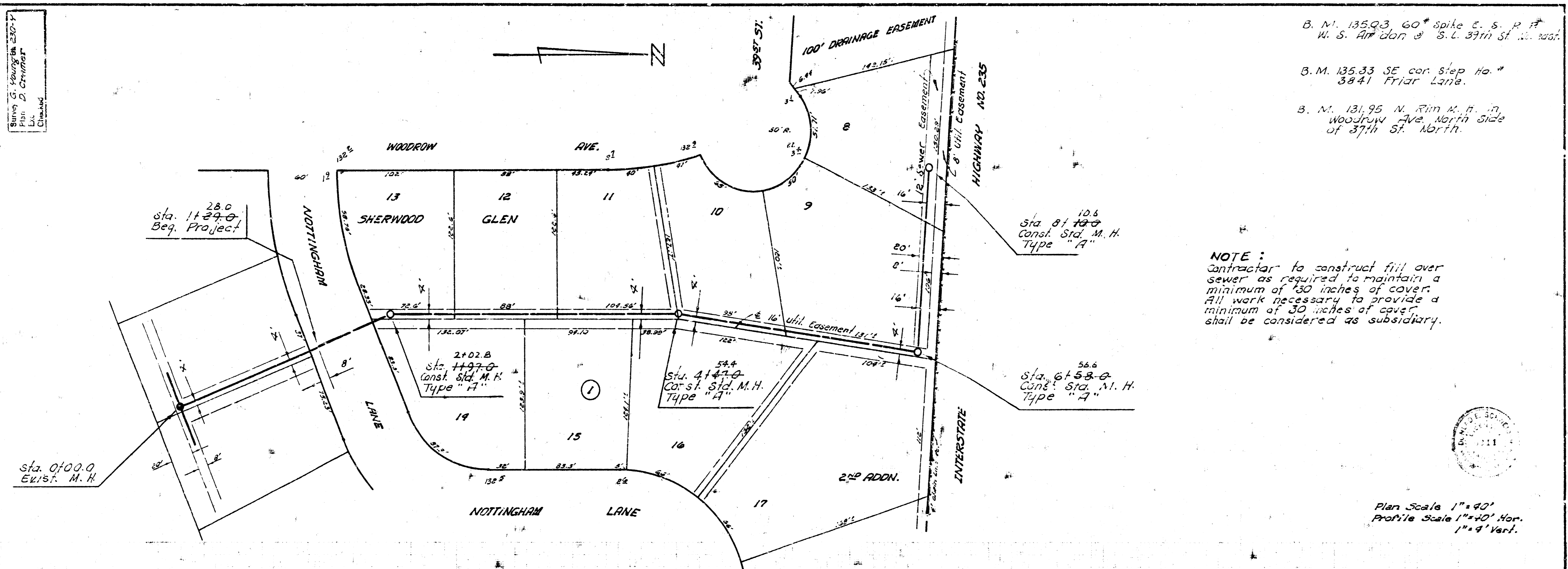


Survey G. Young & Son  
 Plans D. Crummett  
 D. Crummett

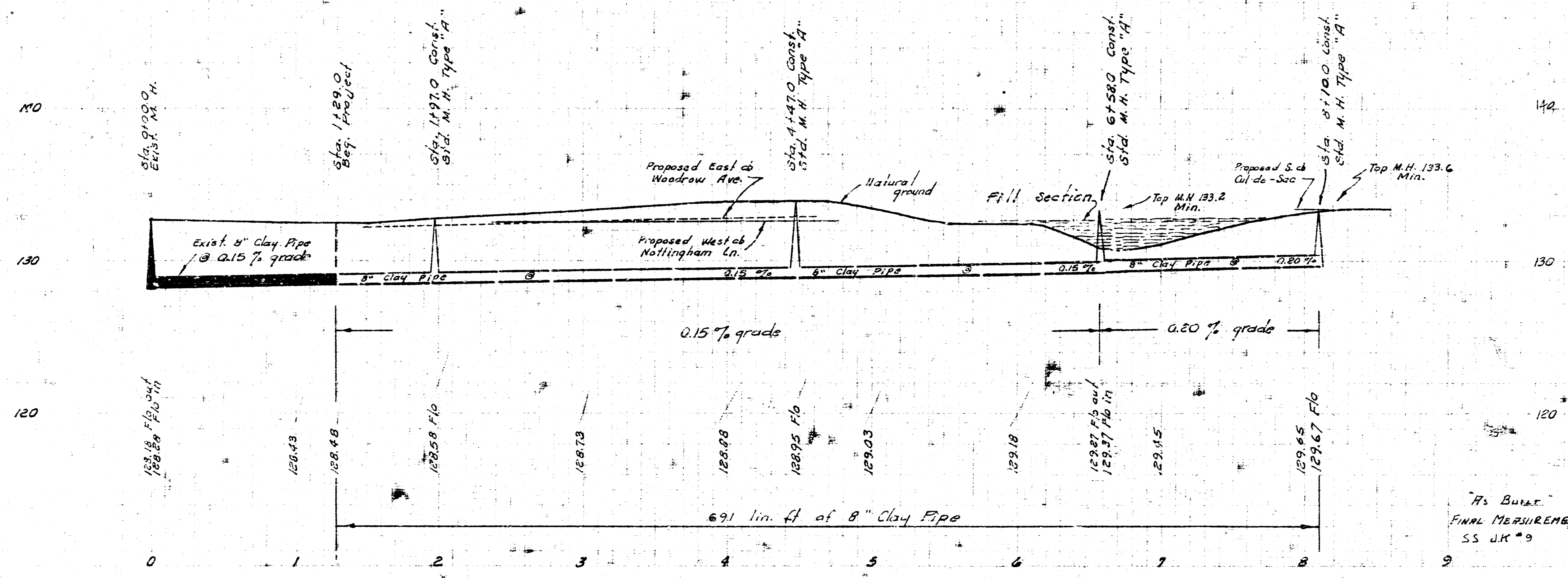


B. M. 13593, 60° spike E. S. P. #  
 W. S. Ardson & S. L. 37th St. ...  
 B. M. 13533 SE cor. Step No. #  
 3841 Friar Lane.  
 B. M. 13195 N. Rim M. H. #  
 Woodrow Ave. North Side  
 of 37th St. North.

NOTE:  
 Contractor to construct fill over  
 sewer as required to maintain a  
 minimum of 180 inches of cover.  
 All work necessary to provide a  
 minimum of 30 inches of cover  
 shall be considered as subsidiary.



Plan Scale 1"=40'  
 Profile Scale 1"=40' Hor.  
 1"=4' Vert.



As Built  
 Final Measurements  
 SS JK '99

LATERAL 23, MAIN 21, S.S. NO. 22  
 CITY OF WICHITA, KANSAS  
 B. E. SMITH, CITY ENGINEER  
 PROJ. NO. DBKLS71015  
 DATE: NOV. 1972