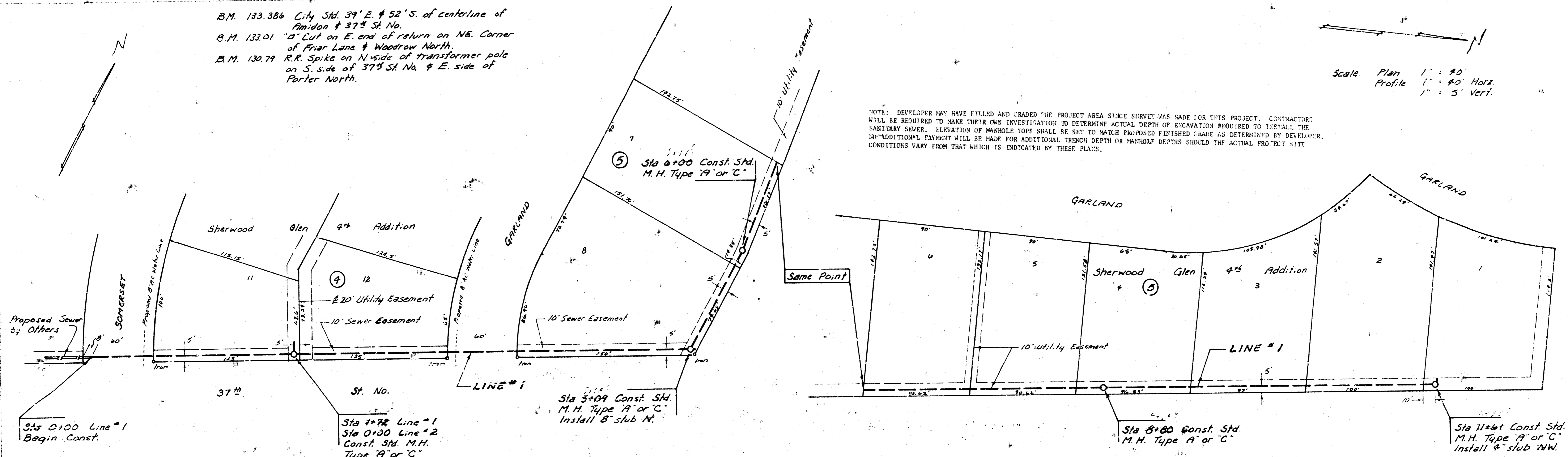


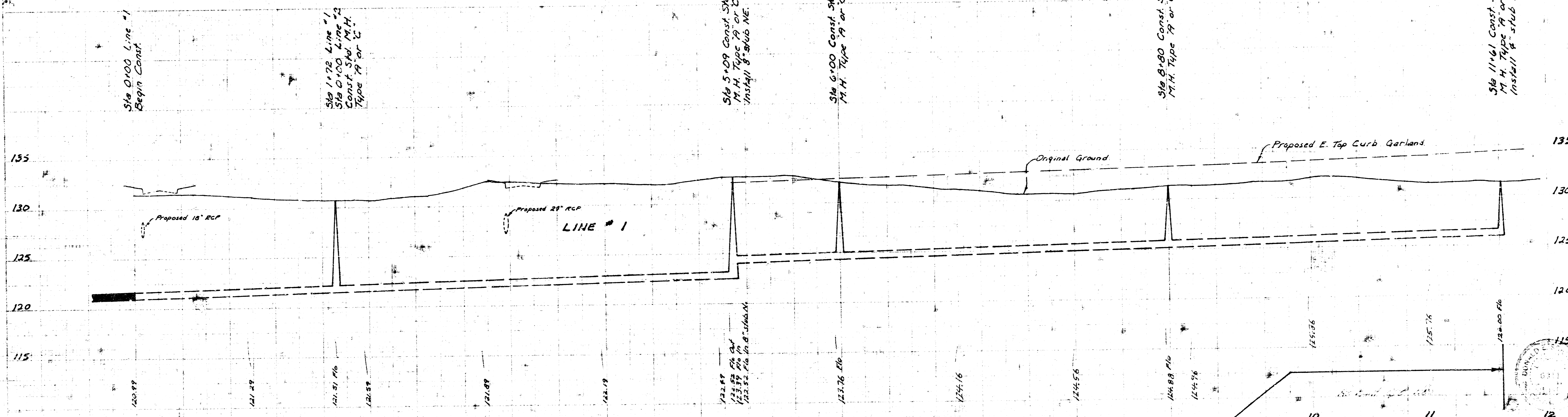
B.M. 133.386 City Std. 39' E. & 52' S. of centerline of Amidon & 37th St. No.
 B.M. 133.01 "Cut on E. end of return on NE. Corner of Friar Lane & Woodrow North.
 B.M. 130.79 R.R. Spike on N. side of transformer pole on S. side of 37th St. No. & E. side of Porter North.

Scale Plan 1" = 40'
 Profile 1" = 4' Horiz.
 1" = 5' Vert.

NOTE: DEVELOPER MAY HAVE FILLED AND GRADED THE PROJECT AREA SINCE SURVEY WAS MADE FOR THIS PROJECT. CONTRACTOR WILL BE REQUIRED TO MAKE THEIR OWN INVESTIGATION TO DETERMINE ACTUAL DEPTH OF EXCAVATION REQUIRED TO INSTALL THE SANITARY SEWER. ELEVATION OF MANHOLE TOPS SHALL BE SET TO MATCH PROPOSED FINISHED GRADE AS DETERMINED BY DEVELOPER. NO ADDITIONAL PAYMENT WILL BE MADE FOR ADDITIONAL TRENCH DEPTH OR MANHOLE DEPTHS SHOULD THE ACTUAL PROJECT SITE CONDITIONS VARY FROM THAT WHICH IS INDICATED BY THESE PLANS.

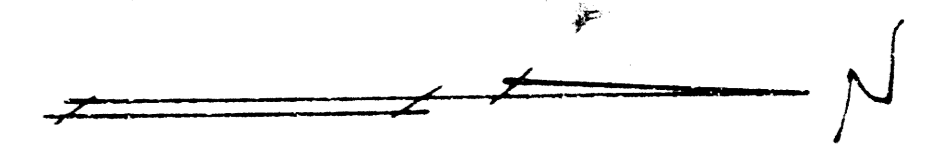


NOTE: GRADES ON LINE NO. 2 AND BETWEEN STATION 5+09 TO 11+61 ON LINE NO. 2 MAY BE CHANGED FROM 0.42% TO 0.32% IF THESE LINES ARE IN GROUND WATER AND IF FLOW ELEVATIONS OF END MANHOLES REMAIN AS SHOWN BY PLANS.



LAT 27, MAIN 21, SANITARY SEWER NO. 22
 CITY OF WICHITA, KANSAS
 R. W. LINN — CITY ENGINEER
 DATE PROJ. NO. 468-76-245-80253-000-000-001

SOMERSET



Scale Plan 1" = 40'
Profile 1" = 40' Horiz.
1" = 5' Vert.

